

SERIES 750 & 788

DPDT, 3PDT 12 AMP OCTAL STYLE / SQUARE BASE POWER RELAYS

FEATURES

- FLAG INDICATOR:** SHOWS RELAY STATUS IN MANUAL OR POWERED CONDITION.
- L.E.D.STATUS LAMP:** SHOWS COIL "ON" OR "OFF" STATUS. IDEAL IN LOW LIGHT CONDITIONS.
- PUSHBUTTON:** ALLOWS FOR MANUAL OPERATION OF RELAY WITHOUT THE NEED FOR COIL POWER. IDEAL FOR FIELD SERVICE PERSONNEL TO TEST CONTROL CIRCUITS.
- LOCK-DOWN DOOR:** WHEN ACTIVATED, HOLDS PUSH BUTTON AND CONTACTS IN THE OPERATE POSITION. EXCELLENT FOR ANALYZING CIRCUIT PROBLEMS.
- FINGER-GRIP COVER:** ALLOWS OPERATOR TO REMOVE RELAYS FROM SOCKETS MORE EASILY THAN CONVENTIONAL RELAYS.
- I.D. TAG/WRITE LABEL:** USED FOR IDENTIFICATION OF RELAYS IN MULTI - RELAY CIRCUITS.

BENEFITS

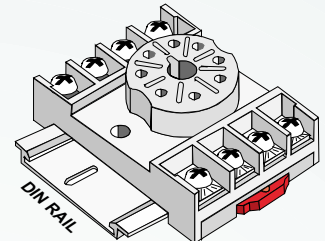
MATING SOCKETS

UL US
UL Recognized
File No. E70550

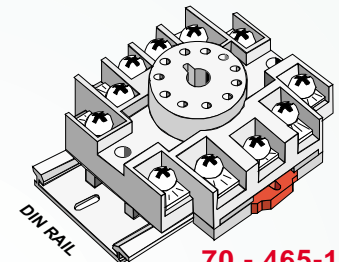


PENDING

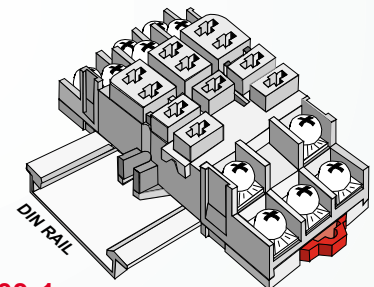
UL RATED 15 AMPS, 300 V



70 - 464-1
8 PIN OCTAL SOCKET
ALSO UL RATED 10 AMPS, 600V



70 - 465-1
11 PIN OCTAL SOCKET
ALSO UL RATED 5 AMPS, 600V



70 - 463-1
11 PIN SCREW SOLDER
TERMINAL DIN / PANELMOUNT.
16 -1325 HOLD DOWN CLIP ORDERED SEPARATELY.

GENERAL SPECIFICATIONS

COIL

- Pull-in Voltage: 80% of Nominal Voltage or less for DC Coils.
85% of Nominal Voltage or less for AC Coils.
- Dropout Voltage: DC-10% Min. AC-30% Min. of Nominal Voltage or More.
- Max. Voltage: 110%
- Resistance: ±10% Measured @ 25°C.
- Coil Power: 1.4 Watts DC, 2 VA to 3.55 VA (60Hz) AC @ 25°C.
- Insulation System: Class "B" (130°C per UL Standard 1446).
- Max. Coil Dissipation: 3.0 Watts DC, 3.4 VA(60Hz)AC. @ 25°C.
- Duty: Continuous.

CONTACTS

- Contact Material: Silver Cadmium Oxide, Gold Flashed
- Contact Rating: 12 Amp, 120 / 240 VAC 50/60Hz, 12 Amp, 28 VDC.
1/3Hp 120 VAC, 1/2Hp 240 VAC.
- Contact Resistance: 50 Milliohms Max. @10 Amps,120 VAC or 24 VDC
Contacts Conditioned for 50 Make and Break Operations @ 1 second "ON" & 1 second "OFF"

DIELECTRIC STRENGTH

- Contacts to Coil: 2500 V rms
- Across open Contacts: 1500 V rms
- Pole to Pole: 2500 V rms
- Contacts to Frame: 2500 V rms
- Insulation Resistance: 100 megohms @ 500 VDC

TEMPERATURE

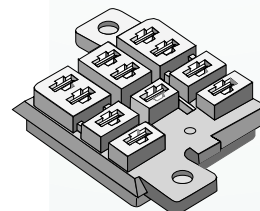
- Operating: -30°C to +50°C. (AC). -30°C +65°C. (DC)
- Storage: -30°C to +100°C

LIFE EXPECTANCY

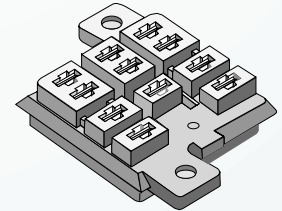
- Electrical: 200,000 Operations @ Rated Resistive Load
- Mechanical: 5,000,000 Operations @ No Load

MISCELLANEOUS

- Operating Postition: Any
- Insulation Material: Molded Plastic.
- Enclosure: Polycarbonate Dust Cover.
- Weight: 88 g Approx.



70 - 124 - 1
0.130" SOLDER TERMINALS
16 -1325 HOLD DOWN CLIP
ORDERED SEPARATELY.



70 - 178 - 1
P. C. TERMINALS
16 -1325 HOLD DOWN CLIP
ORDERED SEPARATELY.

70 - 124 - 2
0.187" Q. C. TERMINALS
16 -1325 HOLD DOWN CLIP
ORDERED SEPARATELY.

70 - 178 - 2
P. C. TERMINALS (NO TABS)
16 -1325 HOLD DOWN CLIP
ORDERED SEPARATELY.

SERIES 750

DPDT, 3PDT 12 AMP OCTAL STYLE POWER RELAYS



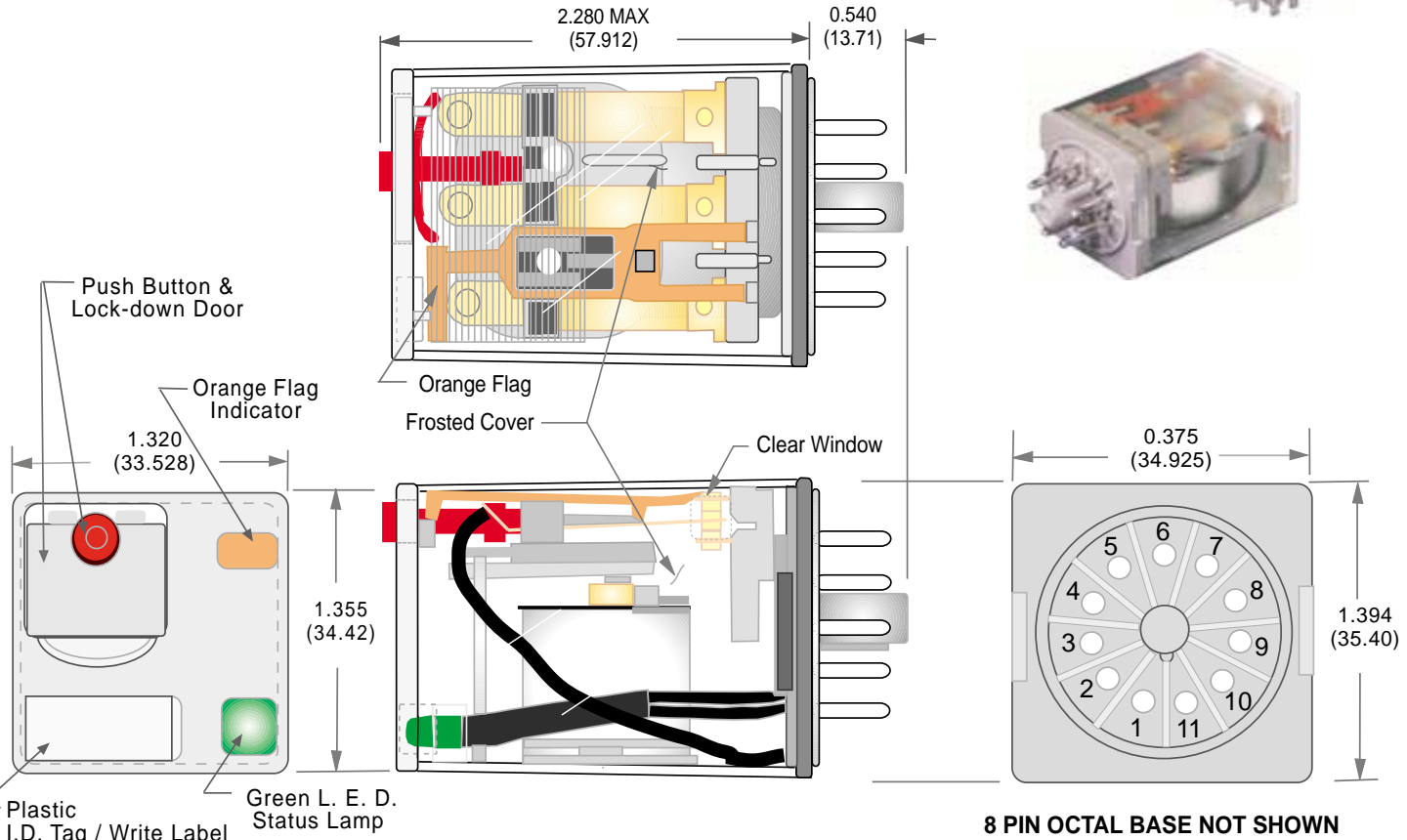
UL Listed versions available. See back page.

UL RATED 12 AMPS

MANUFACTURED UNDER
ISO 9002 & QS 9000

OUTLINE DIMENSIONS

DIMENSIONS SHOWN IN INCHES & (MILLIMETERS)



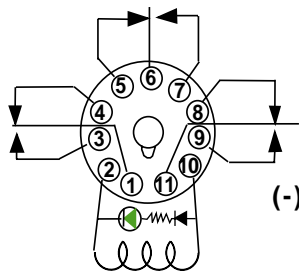
8 PIN OCTAL BASE NOT SHOWN

3PDT

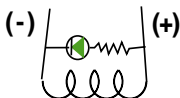
8 PIN OR 11 PIN OCTAL STYLE

DPDT

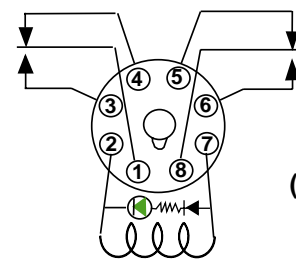
WIRING DIAGRAMS (VIEWED FROM PIN END)



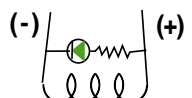
AC STYLES



DC STYLES



AC STYLES



DC STYLES

OBSERVE POLARITY WHEN L.E.D. STATUS LAMP IS INSTALLED ACROSS COIL. (DC STYLES TYPICAL.)

SERIES 788

DPDT, 3PDT 12 AMP SQUARE BASE POWER RELAYS



UL Recognized
File No. E43641



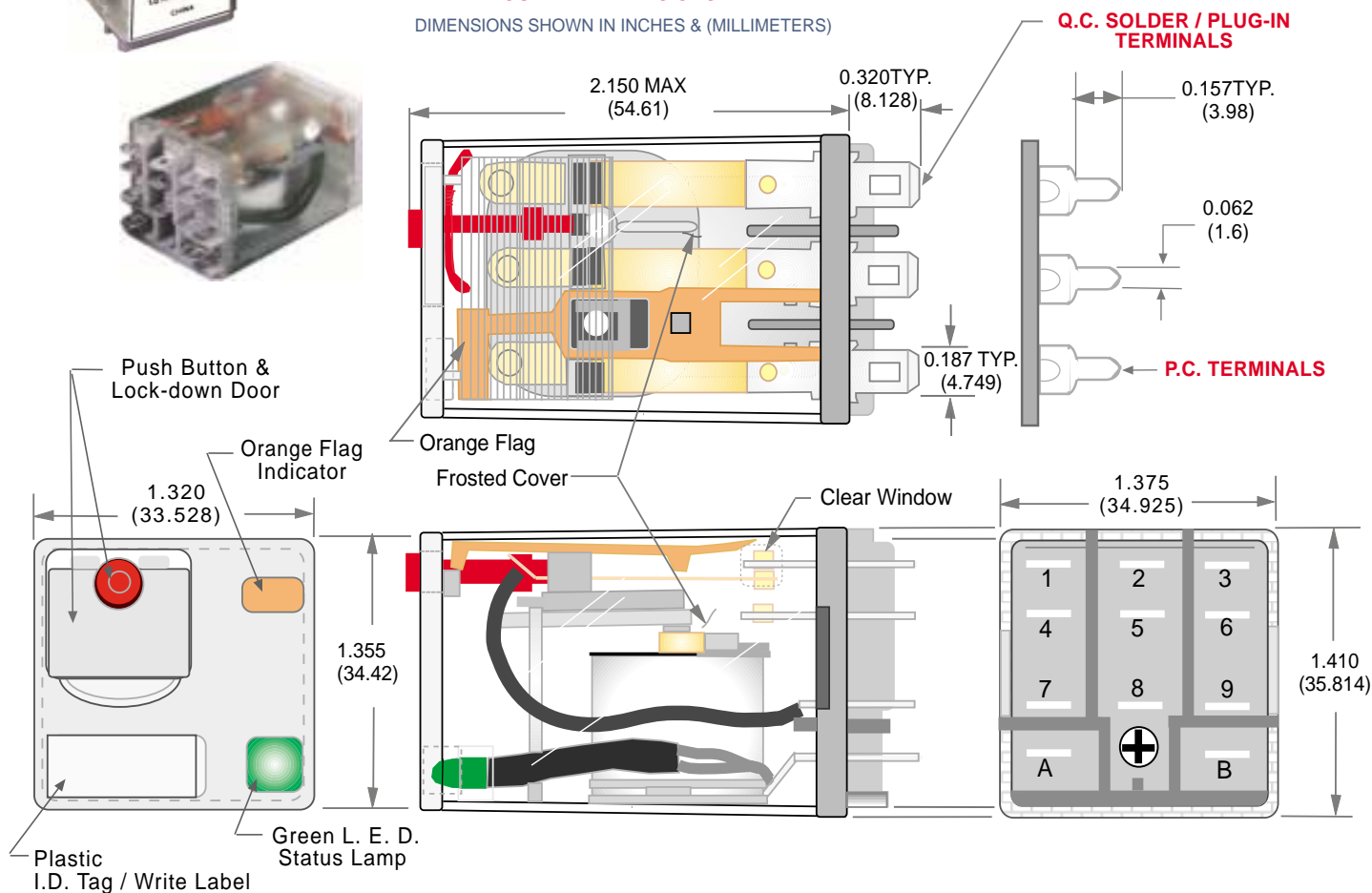
UL Listed versions
available.
See back page.

MANUFACTURED UNDER
ISO 9002 & QS 9000

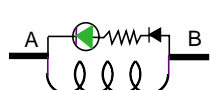
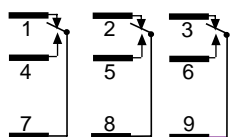
UL RATED 12 AMPS

OUTLINE DIMENSIONS

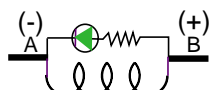
DIMENSIONS SHOWN IN INCHES & (MILLIMETERS)



3PDT



AC STYLES

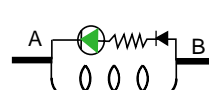
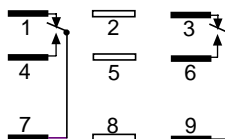


DC STYLES

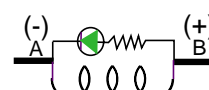
WIRING DIAGRAMS

(VIEWED FROM PIN END)

DPDT



AC STYLES



DC STYLES

OBSERVE POLARITY WHEN L.E.D. STATUS LAMP IS
INSTALLED ACROSS COIL. (DC STYLES TYPICAL.)

SERIES 750 & 788

DPDT, 3PDT 12 AMP OCTAL STYLE / SQUARE BASE POWER RELAYS

750 STANDARD PART NUMBERS

ORDERING CODE

SERIES: _____
CONTACT ARRANGEMENT: _____
TERMINAL STYLE FOR 788 ONLY: _____
STANDARD FEATURES: _____
COIL VOLTAGE: _____

750 or 788 **XBX** M4L -120A

DPDT - **XBX**
 3PDT - **XCX**

SOLDER PLUG-IN TERMINALS - **NO CODE**
 PRINTED CIRCUIT TERMINALS - **CODE T**

PUSH BUTTON & LOCK DOWN DOOR - **CODE M4**
 L.E.D. STATUS LAMP- **CODE L**

6, 12, 24, 120, 220 / 230, 240

ADD "A" FOR VAC COILS

6, 12, 24, 48, 110

ADD "D" FOR VDC COILS

PART NUMBERS	COIL MEASURED @ 25°C		
	NOMINAL INPUT VOLTAGE	NOMINAL RESISTANCE (OHMS)	CROSS REFERENCE ALLEN BRADLEY
AC OPERATED COIL - 8 PIN OCTAL, 12 AMP			
750BXM4L-24A	24 VAC, 50/60Hz	72 Ω	700HA32A24-1-4
750BXM4L-120A	120 VAC, 50/60Hz	1,700 Ω	700HA32A1-1-4
750BXM4L-240A	240 VAC, 50/60Hz	9,100 Ω	700HA32A2-1-4L
DC OPERATED COIL - 8 PIN OCTAL, 12 AMP			
750BXM4L-12D	12 VDC	120 Ω	700HA32Z12-1-4
750BXM4L-24D	24 VDC	470 Ω	700HA32Z24-1-4
750BXM4L-110D	110 VDC	10,000 Ω	700HA32Z1-1-4
AC OPERATED COIL - 11 PIN OCTAL, 12 AMP			
750CXM4L-24A	24 VAC, 50/60Hz	72 Ω	700HA33A24-1-4
750CXM4L-120A	120 VAC, 50/60Hz	1,700 Ω	700HA33A1-1-4
750CXM4L-240A	240 VAC, 50/60Hz	9,100 Ω	700HA33A2-1-4L
DC OPERATED COIL - 11 PIN OCTAL, 12 AMP			
750CXM4L-12D	12 VDC	120 Ω	700HA33Z12-1-4
750CXM4L-24D	24 VDC	470 Ω	700HA33Z24-1-4
750CXM4L-110D	110 VDC	10,000 Ω	700HA33Z1-1-4

788 STANDARD PART NUMBERS

PART NUMBERS	COIL MEASURED @ 25°C		
	NOMINAL INPUT VOLTAGE	NOMINAL RESISTANCE (OHMS)	CROSS REFERENCE ALLEN BRADLEY
AC OPERATED COIL - SOLDER/PLUG-IN, 12 AMP			
788BXM4L-24A	24 VAC, 50/60Hz	72 Ω	700HB32A24-1-4
788BXM4L-120A	120 VAC, 50/60Hz	1,700 Ω	700HB32A1-1-4
788BXM4L-240A	240 VAC, 50/60Hz	9,100 Ω	700HB32A2-1-4L
DC OPERATED COIL - SOLDER/PLUG-IN, 12 AMP			
788BXM4L-12D	12 VDC	120 Ω	700HB32Z12-1-4
788BXM4L-24D	24 VDC	470 Ω	700HB32Z24-1-4
788BXM4L-110D	110 VDC	10,000 Ω	700HB32Z1-1-4
AC OPERATED COIL - SOLDER/PLUG-IN, 12 AMP			
788CXM4L-24A	24 VAC, 50/60Hz	72 Ω	700HB33A24-1-4
788CXM4L-120A	120 VAC, 50/60Hz	1,700 Ω	700HB33A1-1-4
788CXM4L-240A	240 VAC, 50/60Hz	9,100 Ω	700HB33A2-1-4L
DC OPERATED COIL - SOLDER/PLUG-IN, 12 AMP			
788CXM4L-12D	12 VDC	120 Ω	700HB33Z12-1-4
788CXM4L-24D	24 VDC	470 Ω	700HB33Z24-1-4
788CXM4L-110D	110 VDC	10,000 Ω	700HB33Z1-1-4

EXCEPTIONS: 700HA & 700HB.....

1. DOES NOT HAVE LOCK DOWN DOOR.
2. DOES HAVE SILVER NICKEL CONTACTS.



LISTED
367G

UL Listed versions available on special order.

750 style 2 pole relays must be used with socket 70-464-1. 3 pole style must be used with socket 70-465-1.

788 style relays must be used with socket 70-463-1.

Consult Factory.