



Quality Products. Service Excellence.

## Type 4X, 6P Polycarbonate & General Purpose ABS Enclosures 1554

Series

Watertight, Flat Lid, UL Listed Options



### Key Features:

- Ideally suited for mounting printed circuit boards or DIN rail mounted components (see photo features below for details).
- ABS Versions are molded from general purpose material which carries a flammability rating of UL94-HB. For indoor use.
- Polycarbonate versions are UV stabilized for outdoor use. Gray polycarb carries a UL94-5VA rating, while clear and smoked lids carry a UL94V-0 rating.
- Polycarbonate versions are cUL and UL 508A listed (File # E65324). ABS plastic versions are not UL listed.
- Enclosure color is a light gray (RAL 7035).
- Gasketed lid with two piece "tongue & groove" construction provides protection against access of oil, dust and water.
- Replaceable gasket is one piece made from high temperature, U.L. listed silicone. Supplied loose inside the enclosure (not pre-installed).
- Polycarb versions are designed to meet NEMA Type 4, 4X, 6, 6P, 12 & 13 ratings which meet and exceed IP ratings up to and including IP68. (Except 1554/55 V size which is 4,4X only)
- ABS Plastic versions are designed to meet IP66.
- Lid is secured with included M4 stainless steel machine screws which are threaded into corrosion resistant bushings for repetitive assembly & disassembly. All hardware is designed to avoid corrosion caused by harsh environments over time.
- Lid screws are self capturing (lid holes are threaded with the first installation of lid screws).
- Internal features are maximized for mounting options and vary with size:
  - Internal DIN rail mounting tabs molded into most models, except sizes "C" and "D".
  - Threaded (M3) integral brass inserts and/or standoffs (#6 self tapping screws) for P.C. board or inner panel mounting in all but the smallest size ("B").
  - Vertical P.C. card guides (for 1.5 mm thick P.C. boards) are molded in all but the smallest size ("B").



### Photo Features:

Polycarbonate versions available with gray, clear, or smoked lid. ABS version available only in gray.

Smoked



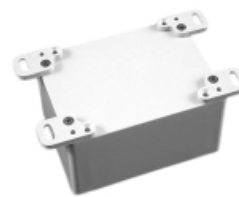
**Gray**

**Clear**

Wall-mounting holes are located outside of the gasket channel

Same wall mounting holes can be used to install an accessory foot kit, 1554FT

Internal mounting posts can be used to mount accessory inner panels, PC boards, or DIN rails (inner panel shown)



**Accessories**

- Inner Panels
- Breather Kit
- Pressure Compensation Plug
- Hole Plugs
- Pole Mount Kit
- Replacement Gaskets
- Small Rainproof Ventilator
- Hole Plugs
- Hole Plugs
- Liquid-Tight Cordgrips (Nickel Plated Brass)
- Liquid-Tight Cordgrips (Nylon)

**Enclosure Part Numbers**

| ABS (not UL) |           | Polycarbonate (UL Listed) |             | Qty Lid |        |       |              |             |          | Replacement | Replacement    |
|--------------|-----------|---------------------------|-------------|---------|--------|-------|--------------|-------------|----------|-------------|----------------|
| Gray Lid     | Gray Lid  | Clear Lid                 | Smoked Lid  | Screws  | Length | Width | Total Height | Inner Panel | Foot Kit | Gasket      | Screws (50-pk) |
| 1554BGY      | 1554B2GY  | 1554B2GYCL                | 1554B2GYSL  | 4       | 2.60   | 2.60  | 1.60         | 1554BPL     | 1554FT   | 1554BGASKET | SC576-50       |
| 1554EGY      | 1554E2GY  | 1554E2GYCL                | 1554E2GYSL  | 4       | 3.50   | 3.50  | 2.40         | 1554EPL     | 1554FT   | 1554EGASKET | SC576-50       |
| 1554EEGY     | 1554EE2GY | 1554EE2GYCL               | 1554EE2GYSL | 4       | 3.50   | 3.50  | 3.50         | 1554EPL     | 1554FT   | 1554EGASKET | SC576-50       |
| 1554LGY      | 1554L2GY  | 1554L2GYCL                | 1554L2GYSL  | 4       | 4.13   | 4.13  | 2.36         | 1554LPL     | 1554FT   | 1554LGASKET | SC576-50       |
| 1554LAGY     | 1554LA2GY | 1554LA2GYCL               | 1554LA2GYSL | 4       | 4.13   | 4.13  | 3.54         | 1554LPL     | 1554FT   | 1554LGASKET | SC576-50       |
| 1554CGY      | 1554C2GY  | 1554C2GYCL                | 1554C2GYSL  | 4       | 4.70   | 2.60  | 1.60         | 1554CPL     | 1554FT   | 1554CGASKET | SC576-50       |
| 1554DGY      | 1554D2GY  | 1554D2GYCL                | 1554D2GYSL  | 4       | 4.70   | 2.60  | 2.40         | 1554CPL     | 1554FT   | 1554CGASKET | SC576-50       |
| 1554FGY      | 1554F2GY  | 1554F2GYCL                | 1554F2GYSL  | 4       | 4.70   | 3.50  | 2.40         | 1554FPL     | 1554FT   | 1554FGASKET | SC576-50       |
| 1554GGY      | 1554G2GY  | 1554G2GYCL                | 1554G2GYSL  | 4       | 4.70   | 3.50  | 3.15         | 1554FPL     | 1554FT   | 1554FGASKET | SC576-50       |
| 1554NGY      | 1554N2GY  | 1554N2GYCL                | 1554N2GYSL  | 4       | 4.70   | 4.70  | 2.40         | 1554NPL     | 1554FT   | 1554NGASKET | SC576-50       |
| 1554PGY      | 1554P2GY  | 1554P2GYCL                | 1554P2GYSL  | 4       | 4.70   | 4.70  | 3.15         | 1554NPL     | 1554FT   | 1554NGASKET | SC576-50       |
| 1554QGY      | 1554Q2GY  | 1554Q2GYCL                | 1554Q2GYSL  | 4       | 5.51   | 5.51  | 2.36         | 1554QPL     | 1554FT   | 1554QGASKET | SC576-50       |
| 1554QAGY     | 1554QA2GY | 1554QA2GYCL               | 1554QA2GYSL | 4       | 5.51   | 5.51  | 3.54         | 1554QPL     | 1554FT   | 1554QGASKET | SC576-50       |
| 1554JLGY     | 1554JL2GY | 1554JL2GYCL               | 1554JL2GYSL | 4       | 6.30   | 3.50  | 1.80         | 1554JPL     | 1554FT   | 1554JGASKET | SC576-50       |
| 1554JGY      | 1554J2GY  | 1554J2GYCL                | 1554J2GYSL  | 4       | 6.30   | 3.50  | 2.40         | 1554JPL     | 1554FT   | 1554JGASKET | SC576-50       |
| 1554KGY      | 1554K2GY  | 1554K2GYCL                | 1554K2GYSL  | 4       | 6.30   | 3.50  | 3.50         | 1554JPL     | 1554FT   | 1554JGASKET | SC576-50       |
| 1554RGY      | 1554R2GY  | 1554R2GYCL                | 1554R2GYSL  | 4       | 6.30   | 6.30  | 2.40         | 1554RPL     | 1554FT   | 1554RGASKET | SC576-50       |

| ABS (not UL) |            | Polycarbonate (UL Listed) |              | Qty Lid |        |       |              |             |           | Replacement  |                | Replacement |
|--------------|------------|---------------------------|--------------|---------|--------|-------|--------------|-------------|-----------|--------------|----------------|-------------|
| Gray Lid     | Gray Lid   | Clear Lid                 | Smoked Lid   | Screws  | Length | Width | Total Height | Inner Panel | Foot Kit  | Gasket       | Screws (50-pk) |             |
| 1554SGY      | 1554S2GY   | 1554S2GYCL                | 1554S2GYSL   | 4       | 6.30   | 6.30  | 3.50         | 1554RPL     | 1554FT    | 1554RGASKET  | SC576-50       |             |
| 1554HLGY     | 1554HL2GY  | 1554HL2GYCL               | 1554HL2GYSL  | 4       | 7.10   | 4.70  | 1.80         | 1554HPL     | 1554FT    | 1554HGASKET  | SC576-50       |             |
| 1554HGY      | 1554H2GY   | 1554H2GYCL                | 1554H2GYSL   | 4       | 7.10   | 4.70  | 2.40         | 1554HPL     | 1554FT    | 1554HGASKET  | SC576-50       |             |
| 1554TGY      | 1554T2GY   | 1554T2GYCL                | 1554T2GYSL   | 4       | 7.10   | 4.70  | 3.50         | 1554HPL     | 1554FT    | 1554HGASKET  | SC576-50       |             |
| 1554WGY      | 1554W2GY   | 1554W2GYCL                | 1554W2GYSL   | 4       | 7.10   | 7.10  | 2.36         | 1554WPL     | 1554FT    | 1554WGASKET  | SC576-50       |             |
| 1554WAGY     | 1554WA2GY  | 1554WA2GYCL               | 1554WA2GYSL  | 4       | 7.10   | 7.10  | 3.54         | 1554WPL     | 1554FT    | 1554WGASKET  | SC576-50       |             |
| 1554UGY      | 1554U2GY   | 1554U2GYCL                | 1554U2GYSL   | 4       | 7.90   | 4.70  | 3.50         | 1554UPL     | 1554FT    | 1554UGASKET  | SC576-50       |             |
| 1554VGY      | 1554V2GY   | 1554V2GYCL                | 1554V2GYSL   | 4       | 9.40   | 6.30  | 3.50         | 1554VPL     | 1554FT    | 1554VGASKET  | SC583-50       |             |
| 1554VALGY    | 1554VAL2GY | 1554VAL2GYCL              | 1554VAL2GYSL | 4       | 9.40   | 6.30  | 2.36         | 1554VAPL    | 1554FT    | 1554VAGASKET | SC583-50       |             |
| 1554VAGY     | 1554VA2GY  | 1554VA2GYCL               | 1554VA2GYSL  | 6       | 9.40   | 6.30  | 3.50         | 1554VAPL    | 1554FT    | 1554VAGASKET | SC583-50       |             |
| 1554VBGY     | 1554VB2GY  | 1554VB2GYCL               | 1554VB2GYSL  | 6       | 9.40   | 6.30  | 4.70         | 1554VAPL    | 1554FT    | 1554VAGASKET | SC583-50       |             |
| 1554XGY      | 1554X2GY   | 1554X2GYCL                | 1554X2GYSL   | 6       | 11.81  | 7.87  | 3.54         | 1554XPL     | 1554FT-XY | 1554XGASKET  | SC583-50       |             |
| 1554XAGY     | 1554XA2GY  | 1554XA2GYCL               | 1554XA2GYSL  | 6       | 11.81  | 7.87  | 4.72         | 1554XPL     | 1554FT-XY | 1554XGASKET  | SC583-50       |             |
| 1554YGY      | 1554Y2GY   | 1554Y2GYCL                | 1554Y2GYSL   | 6       | 11.81  | 9.45  | 3.74         | 1554YPL     | 1554FT-XY | 1554YGASKET  | SC583-50       |             |
| 1554YAGY     | 1554YA2GY  | 1554YA2GYCL               | 1554YA2GYSL  | 6       | 11.81  | 9.45  | 4.72         | 1554YPL     | 1554FT-XY | 1554YGASKET  | SC583-50       |             |

*Data subject to change without notice*

© 2022. Hammond Manufacturing Ltd. All rights reserved.