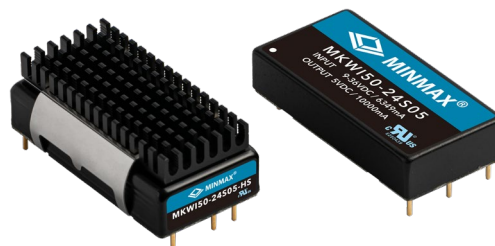


FEATURES

- ▶ Smallest Encapsulated 50W Converter
- ▶ Ultra-compact 2" X 1" Package
- ▶ Wide 2:1 Input Voltage Range
- ▶ Fully Regulated Output Voltage
- ▶ Excellent Efficiency up to 92%
- ▶ I/O Isolation 1500 VDC
- ▶ Operating Ambient Temp. Range -40°C to +80°C
- ▶ No Min. Load Requirement
- ▶ Overload/Voltage/Temp. and Short Circuit Protection
- ▶ Remote On/Off Control, Output Voltage Trim
- ▶ Shielded Metal Case with Insulated Baseplate
- ▶ UL/cUL/IEC/EN 62368-1(60950-1) Safety Approval & CE Marking


PRODUCT OVERVIEW

The MINMAX MKW50 series is the latest generation of high performance DC-DC converter modules setting a new standard concerning power density. The product offers fully 50W in an encapsulated, shielded metal package with dimensions of just 2.0"x1.0"x0.4". All models provide wide 2:1 input voltage range and precisely regulated output voltages.

Advanced circuit topology provides a very high efficiency up to 92% which allows an operating temperature range of -40°C to +80°C. Further features include remote On/Off, trimmable output voltage, under-voltage shutdown as well as overload and over-temperature protection. Typical applications for these converters are battery operated equipment, instrumentation, distributed power architectures in communication and industrial electronics and many other space critical applications.

Model Selection Guide

Model Number	Input Voltage (Range) VDC	Output Voltage VDC	Output Current Max. mA	Input Current		Reflected Ripple Current mA(typ.)	Over Voltage Protection VDC	Max. capacitive Load μ F	Efficiency (typ.)
				@Max. Load mA(typ.)	@No Load mA(typ.)				@Max. Load %
MKW50-12S033	12 (9 ~ 18)	3.3	10000	3090	85	50	3.9	25800	89
MKW50-12S05		5	10000	4630	110		6.2	17000	90
MKW50-12S12		12	4170	4580	160		15	2900	91
MKW50-12S15		15	3330	4580	160		18	1900	91
MKW50-12S24		24	2080	4570	250		30	750	91
MKW50-24S033	24 (18 ~ 36)	3.3	10000	1550	50	40	3.9	25800	89
MKW50-24S05		5	10000	2260	70		6.2	17000	92
MKW50-24S12		12	4170	2260	85		15	2900	92
MKW50-24S15		15	3330	2260	85		18	1900	92
MKW50-24S24		24	2080	2290	110		30	750	91
MKW50-48S033	48 (36 ~ 75)	3.3	10000	770	35	30	3.9	25800	89
MKW50-48S05		5	10000	1130	45		6.2	17000	92
MKW50-48S12		12	4170	1130	50		15	2900	92
MKW50-48S15		15	3330	1130	50		18	1900	92
MKW50-48S24		24	2080	1150	60		30	750	91

Input Specifications						
Parameter	Model	Min.	Typ.	Max.	Unit	
Input Surge Voltage (100ms. max)	12V Input Models	-0.7	---	25	VDC	
	24V Input Models	-0.7	---	50		
	48V Input Models	-0.7	---	100		
Start-Up Threshold Voltage	12V Input Models	---	---	9		
	24V Input Models	---	---	18		
	48V Input Models	---	---	36		
Under Voltage Shutdown	12V Input Models	---	8.3	---		
	24V Input Models	---	16.5	---		
	48V Input Models	---	33	---		
Start Up Time	Power Up	Nominal Vin and Constant Resistive Load	---	---	30	ms
	Remote On/Off		---	---	30	ms
Input Filter	All Models	Internal LC Type				

Remote On/Off Control						
Parameter	Conditions	Min.	Typ.	Max.	Unit	
Converter On	3.5V ~ 12V or Open Circuit					
Converter Off	0V ~ 1.2V or Short Circuit					
Control Input Current (on)	Vctrl = 5.0V	---	0.5	---	mA	
Control Input Current (off)	Vctrl = 0V	---	-0.5	---	mA	
Control Common	Referenced to Negative Input					
Standby Input Current	Nominal Vin	---	2.5	---	mA	

Output Specifications							
Parameter	Conditions / Model	Min.	Typ.	Max.	Unit		
Output Voltage Setting Accuracy						±1.0	%Vnom.
Line Regulation	Vin=Min. to Max. @ Full Load	---	---	±0.5	%		
Load Regulation	Io=0% to 100%	---	---	±0.5	%		
Minimum Load	No minimum Load Requirement						
Ripple & Noise	0-20 MHz Bandwidth	3.3V & 5V Models ⁽³⁾	---	---	100	mV P-P	
		12V, 15V & 24V Models ⁽³⁾	---	---	150	mV P-P	
Transient Recovery Time	25% Load Step Change ⁽²⁾			250	µsec		
Transient Response Deviation				±3	±5	%	
Temperature Coefficient			---	---	±0.02	%/°C	
Trim Up / Down Range (See Page 6)	% of Nominal Output Voltage	24Vo Models	---	---	+20 / -10	%	
		Other Models	---	---	±10	%	
Over Load Protection	Hiccup	---	150	---	%		
Short Circuit Protection	24Vo Models	Continuous, Automatic Recovery (Hiccup Mode 0.3Hz typ.)					
	Other Models	Continuous, Automatic Recovery (Hiccup Mode 1.5Hz typ.)					

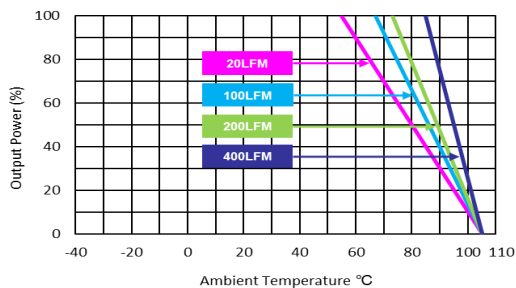
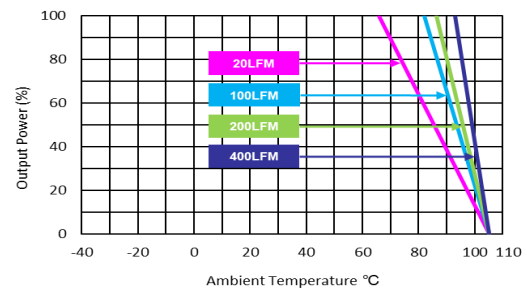
General Specifications						
Parameter	Conditions / Model	Min.	Typ.	Max.	Unit	
I/O Isolation Voltage	60 Seconds	1500	---	---	VDC	
	1 Second	1800	---	---	VDC	
I/O Isolation Resistance	500 VDC	1000	---	---	MΩ	
I/O Isolation Capacitance	100kHz, 1V	---	---	2200	pF	
Switching Frequency	24Vo Models	---	285	---	kHz	
	Other Models	---	320	---	kHz	
MTBF(calculated)	MIL-HDBK-217F@25°C, Ground Benign	224,700			Hours	
Safety Approvals	UL/cUL 60950-1 recognition(CSA certificate), IEC/EN 60950-1(CB-report)					
	UL/cUL 62368-1 recognition(UL certificate), IEC/EN 62368-1(CB-report)					

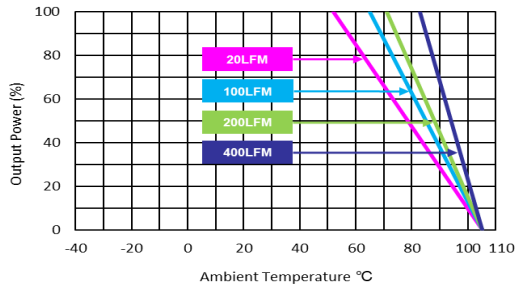
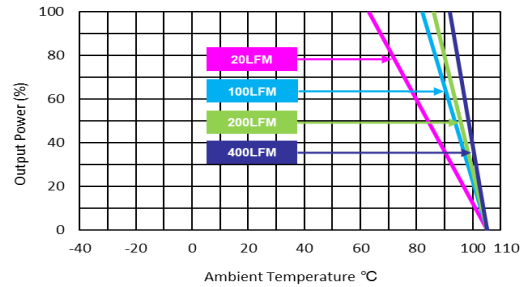
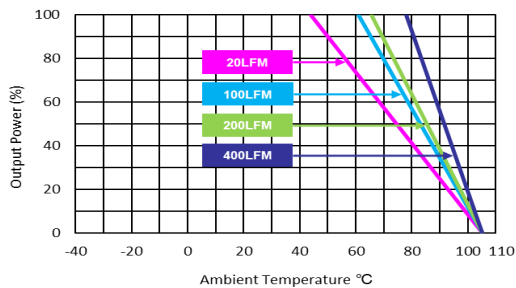
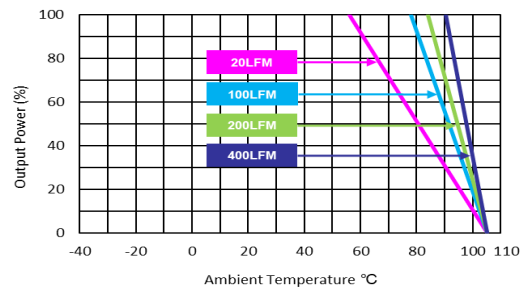
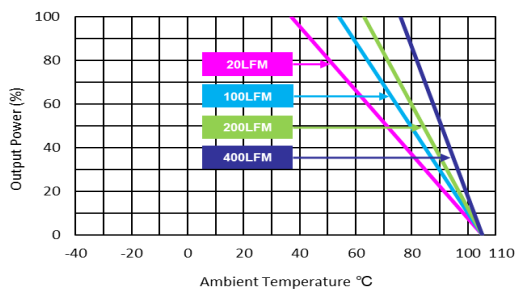
EMC Specifications

Parameter	Standards & Level			Performance
EMI ₍₆₎	Conduction	EN 55032	With external components	Class A
	Radiation			
EMS ₍₆₎	EN 55024			
	ESD	EN61000-4-2 Air ± 8kV , Contact ± 6kV		A
	Radiated immunity	EN61000-4-3 10V/m		A
	Fast transient	EN61000-4-4 ±2kV		A
	Surge	EN61000-4-5 ±1kV		A
	Conducted immunity	EN61000-4-6 10Vrms		A

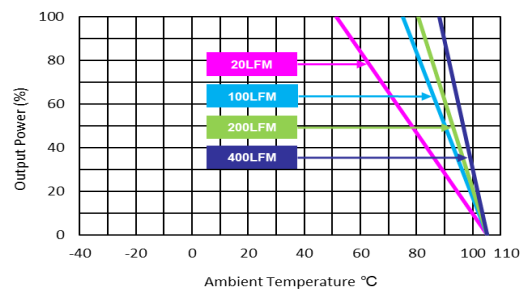
Environmental Specifications

Parameter	Conditions / Model	Min.	Max.		Unit
			without Heatsink	with Heatsink	
Operating Ambient Temperature Range Nominal Vin, Load 100% Inom. (for Power Derating see relative Derating Curves)	MKW50-XXS033	-40	56	64	°C
	MKW50-24S05, MKW50-24S12		53	62	
	MKW50-24S15, MKW50-48S05				
	MKW50-48S12, MKW50-48S15				
	MKW50-12S12, MKW50-12S15				
	MKW50-12S24, MKW50-24S24				
	MKW50-48S24		46	56	
MKW50-12S05	38	49			
Thermal Impedance	20LFM Convection without Heatsink	12.1	---	---	°C/W
	20LFM Convection with Heatsink	9.8	---	---	°C/W
	100LFM Convection without Heatsink	9.2	---	---	°C/W
	100LFM Convection with Heatsink	5.4	---	---	°C/W
	200LFM Convection without Heatsink	7.8	---	---	°C/W
	200LFM Convection with Heatsink	4.5	---	---	°C/W
	400LFM Convection without Heatsink	5.2	---	---	°C/W
	400LFM Convection with Heatsink	3.0	---	---	°C/W
Case Temperature		---	+105	---	°C
Thermal Protection	Shutdown Temperature			110°C typ.	
Storage Temperature Range		-50	+125		°C
Humidity (non condensing)		---	95		% rel. H
RFI	Six-Sided Shielded, Metal Case				
Lead Temperature (1.5mm from case for 10Sec.)		---	260		°C

Power Derating Curve

 MKW50-12S033, MKW50-24S033, MKW50-48S033
 Derating Curve without Heatsink

 MKW50-12S033, MKW50-24S033, MKW50-48S033
 Derating Curve with Heatsink

Power Derating Curve

 MKW50-24S05, MKW50-24S12, MKW50-24S15, MKW50-48S05,
 MKW50-48S12, MKW50-48S15 Derating Curve without Heatsink

 MKW50-24S05, MKW50-24S12, MKW50-24S15, MKW50-48S05,
 MKW50-48S12, MKW50-48S15 Derating Curve with Heatsink

 MKW50-12S12, MKW50-12S15, MKW50-12S24, MKW50-24S24,
 MKW50-48S24 Derating Curve without Heatsink

 MKW50-12S12, MKW50-12S15, MKW50-12S24, MKW50-24S24,
 MKW50-48S24 Derating Curve with Heatsink


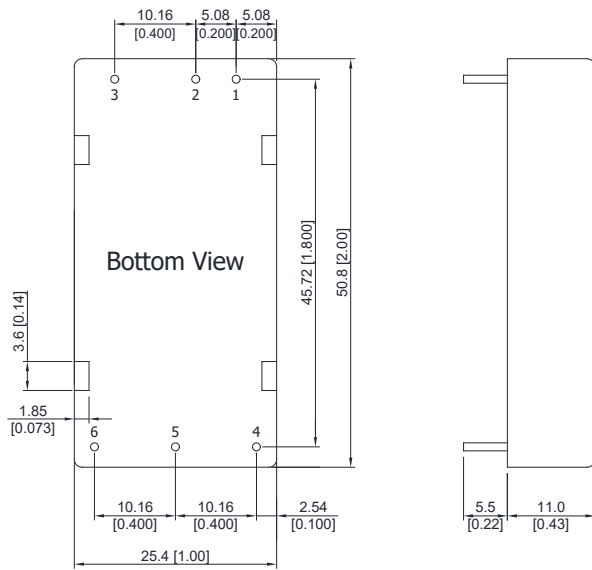
MKW50-12S05 Derating Curve without Heatsink



MKW50-12S05 Derating Curve with Heatsink

Notes

- 1 Specifications typical at $T_a = +25^\circ\text{C}$, resistive load, nominal input voltage and rated output current unless otherwise noted.
- 2 Transient recovery time is measured to within 1% error band for a step change in output load of 75% to 100%.
- 3 Ripple & Noise measurement with a $1\mu\text{F}/50\text{V}$ MLCC and a $10\mu\text{F}/50\text{V}$ Tantalum Capacitor.
- 4 We recommend to protect the converter by a slow blow fuse in the input supply line.
- 5 Other input and output voltage may be available, please contact MINMAX.
- 6 The external components might be required to meet EMI/EMS standard for some of test items. Please contact MINMAX for the solution in detail.
- 7 Do not exceed maximum power specification when adjusting output voltage.
- 8 Specifications are subject to change without notice.
- 9 The repeated high voltage isolation testing of the converter can degrade isolation capability, to a lesser or greater degree depending on materials, construction, environment and reflow solder process. Any material is susceptible to eventual chemical degradation when subject to very high applied voltages thus implying that the number of tests should be strictly limited. We therefore strongly advise against repeated high voltage isolation testing, but if it is absolutely required, that the voltage be reduced by 20% from specified test voltage. Furthermore, the high voltage isolation capability after reflow solder process should be evaluated as it is applied on system.

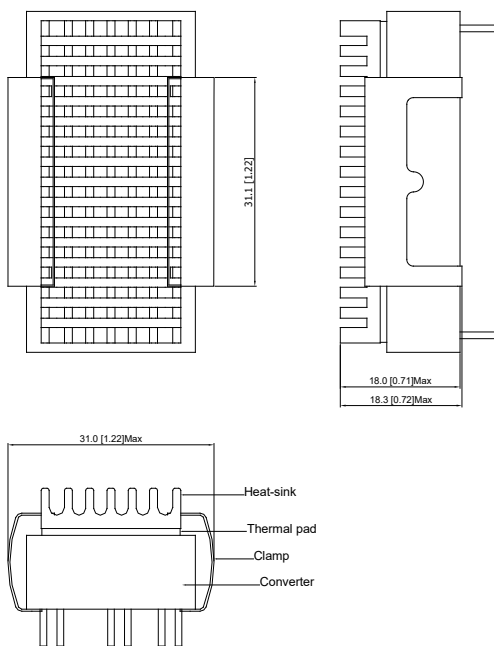
Package Specifications
Mechanical Dimensions

Pin Connections

Pin	Function	Diameter mm (inches)
1	+Vin	Ø 1.0 [0.04]
2	-Vin	Ø 1.0 [0.04]
3	Remote On/Off	Ø 1.0 [0.04]
4	+Vout	Ø 1.0 [0.04]
5	-Vout	Ø 1.0 [0.04]
6	Trim	Ø 1.0 [0.04]

- ▶ All dimensions in mm (inches)
- ▶ Tolerance: X.X±0.25 (X.XX±0.01)
X.XX±0.13 (X.XXX±0.005)
- ▶ Pin diameter tolerance: X.X±0.05 (X.XX±0.002)

Physical Characteristics

Case Size	: 50.8x25.4x11.0mm (2.0x1.0x0.43 inches)
Case Material	: Metal With Non-Conductive Baseplate
Base Material	: FR4 PCB (flammability to UL 94V-0 rated)
Pin Material	: Copper Alloy
Potting Material	: Epoxy (UL94-V0)
Weight	: 30g

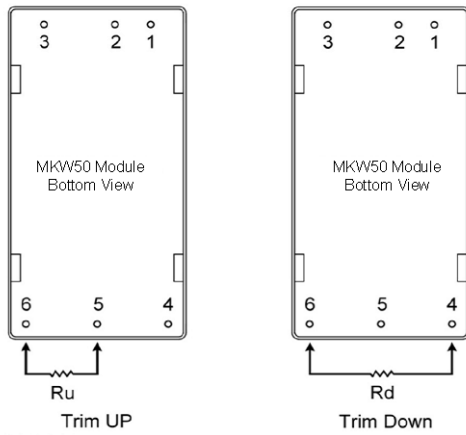
Heatsink (Option -HS)

Physical Characteristics

Heatsink Material	: Aluminum
Finish	: Black Anodized Coating
Weight	: 9g

- ▶ The advantages of adding a heatsink are:
 1. To improve heat dissipation and increase the stability and reliability of the DC-DC converters at high operating temperatures.
 2. To increase operating temperature of the DC-DC converter, please refer to Derating Curve.

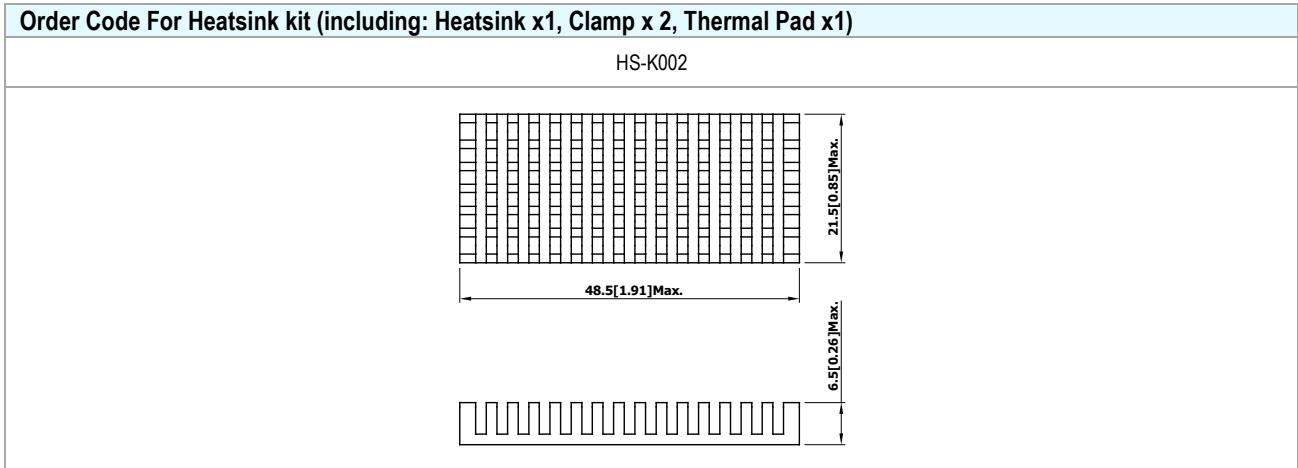
External Output Trimming

Output can be externally trimmed by using the method shown below



Trim Range (%)	MKW50-XXS033		MKW50-XXS05		MKW50-XXS12		MKW50-XXS15		MKW50-XXS24	
	Trim down (kΩ)	Trim up (kΩ)	Trim down (kΩ)	Trim up (kΩ)	Trim down (kΩ)	Trim up (kΩ)	Trim down (kΩ)	Trim up (kΩ)	Trim down (kΩ)	Trim up (kΩ)
1	72.61	60.84	138.88	106.87	413.55	351.00	530.73	422.77	333.39	---
2	32.55	27.40	62.41	47.76	184.55	157.50	238.61	189.89	148.80	243.70
3	19.20	16.25	36.92	28.06	108.22	93.00	141.24	112.26	87.26	---
4	12.52	10.68	24.18	18.21	70.05	60.75	92.56	73.44	56.50	108.50
5	8.51	7.34	16.53	12.30	47.15	41.40	63.35	50.15	38.04	---
6	5.84	5.11	11.44	8.36	31.88	28.50	43.87	34.63	25.73	63.43
7	3.94	3.51	7.79	5.55	20.98	19.29	29.96	23.54	16.94	---
8	2.51	2.32	5.06	3.44	12.80	12.37	19.53	15.22	10.35	40.90
9	1.39	1.39	2.94	1.79	6.44	7.00	11.41	8.75	5.22	---
10	0.50	0.65	1.24	0.48	1.35	2.70	4.92	3.58	1.12	27.38
12	---	---	---	---	---	---	---	---	---	18.37
14	---	---	---	---	---	---	---	---	---	11.93
16	---	---	---	---	---	---	---	---	---	7.10
18	---	---	---	---	---	---	---	---	---	3.34
20	---	---	---	---	---	---	---	---	---	0.34

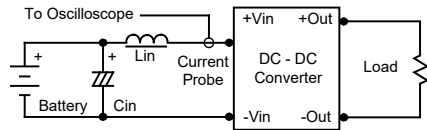
Order Code Table	
Standard	With heatsink
MKW50-12S033	MKW50-12S033-HS
MKW50-12S05	MKW50-12S05-HS
MKW50-12S12	MKW50-12S12-HS
MKW50-12S15	MKW50-12S15-HS
MKW50-12S24	MKW50-12S24-HS
MKW50-24S033	MKW50-24S033-HS
MKW50-24S05	MKW50-24S05-HS
MKW50-24S12	MKW50-24S12-HS
MKW50-24S15	MKW50-24S15-HS
MKW50-24S24	MKW50-24S24-HS
MKW50-48S033	MKW50-48S033-HS
MKW50-48S05	MKW50-48S05-HS
MKW50-48S12	MKW50-48S12-HS
MKW50-48S15	MKW50-48S15-HS
MKW50-48S24	MKW50-48S24-HS



Test Setup

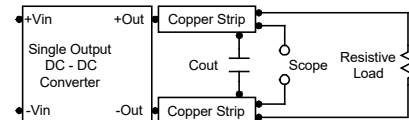
Input Reflected-Ripple Current Test Setup

Input reflected-ripple current is measured with an inductor L_{in} (4.7 μ H) and C_{in} (220 μ F, ESR < 1.0 Ω at 100 kHz) to simulate source impedance. Capacitor C_{in} , offsets possible battery impedance. Current ripple is measured at the input terminals of the module, measurement bandwidth is 0-500 kHz.



Peak-to-Peak Output Noise Measurement Test

Use a 1 μ F ceramic capacitor and a 10 μ F tantalum capacitor. Scope measurement should be made by using a BNC socket, measurement bandwidth is 0-20 MHz. Position the load between 50 mm and 75 mm from the DC-DC Converter.



Technical Notes

Remote On/Off

Positive logic remote on/off turns the module on during a logic high voltage on the remote on/off pin, and off during a logic low. To turn the power module on and off, the user must supply a switch to control the voltage between the on/off terminal and the -Vin terminal. The switch can be an open collector or equivalent.

A logic low is 0V to 1.2V. A logic high is 3.5V to 12V. The maximum sink current at the on/off terminal (Pin 3) during a logic low is -100 μ A.

Overload Protection

To provide hiccup mode protection in a fault (output overload) condition, the unit is equipped with internal current limiting circuitry and can endure overload for an unlimited duration.

Overvoltage Protection

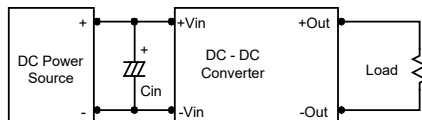
The output overvoltage clamp consists of control circuitry, which is independent of the primary regulation loop, that monitors the voltage on the output terminals. The control loop of the clamp has a higher voltage set point than the primary loop. This provides a redundant voltage control that reduces the risk of output overvoltage. The OVP level can be found in the output data.

Input Source Impedance

The power module should be connected to a low ac-impedance input source. Highly inductive source impedances can affect the stability of the power module.

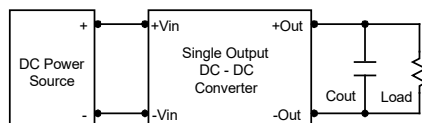
In applications where power is supplied over long lines and output loading is high, it may be necessary to use a capacitor at the input to ensure startup.

Capacitor mounted close to the power module helps ensure stability of the unit, it is recommended to use a good quality low Equivalent Series Resistance (ESR < 1.0 Ω at 100 kHz) capacitor of a 33 μ F for the 12V input devices and a 10 μ F for the 24V and 48V devices.



Output Ripple Reduction

A good quality low ESR capacitor placed as close as practicable across the load will give the best ripple and noise performance. To reduce output ripple, it is recommended to use 4.7 μ F capacitors at the output.



Maximum Capacitive Load

The MKW50 series has limitation of maximum connected capacitance at the output. The power module may be operated in current limiting mode during start-up, affecting the ramp-up and the startup time. The maximum capacitance can be found in the data sheet.

Thermal Considerations

Many conditions affect the thermal performance of the power module, such as orientation, airflow over the module and board spacing. To avoid exceeding the maximum temperature rating of the components inside the power module, the case temperature must be kept below 105 $^{\circ}$ C. The derating curves are determined from measurements obtained in a test setup.

