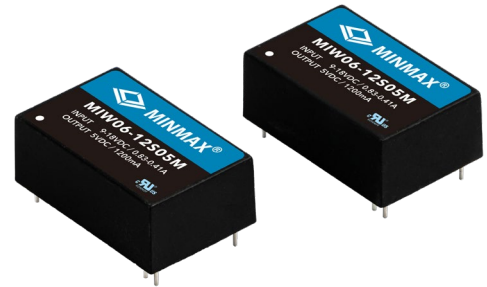


**FEATURES**

- ▶ Industrial Standard DIP-24 Package
- ▶ Wide 2:1 Input Voltage Range
- ▶ Fully Regulated Output Voltage
- ▶ I/O Isolation 5000VAC with Reinforced Insulation, rated for 250Vrms Working Voltage
- ▶ Creepage & Clearance Distance meet 8mm
- ▶ Low I/O Leakage Current < 2μA
- ▶ Operating Ambient Temp. Range -40°C to 95°C
- ▶ No Min. Load Requirement
- ▶ Under-Voltage, Overload/Voltage and Short Circuit Protection
- ▶ Conducted EMI EN 55011 Class A Approved
- ▶ Medical EMC Standard with 4<sup>th</sup> Edition of EMI EN 55011 and EMS EN 60601-1-2 Approved
- ▶ Medical Safety with 2xMOPP per 3<sup>rd</sup> Edition of IEC/EN 60601-1 & ANSI/AAMI ES60601-1 Approved with CE Marking
- ▶ Risk Management Report Acquisition according to ISO 14971


**PRODUCT OVERVIEW**

Introducing the MINMAX MIW06M series – an innovative range of high-performance 6W medical-approved DC-DC converters encapsulated in a DIP-24 package, purposefully designed for medical applications. With an extensive selection of 15 models supporting input voltages of 12, 24, and 48VDC, featuring a wide 2:1 input range and fixed output voltage, this series ensures adaptability to diverse medical device specifications.

The MIW06M series boasts an I/O isolation specified for 5000VAC with reinforced insulation, rated for a reliable 250Vrms working voltage. Advanced features include under-voltage, overload, over-voltage, and short-circuit protection, along with no minimum load requirement, conducted EMI EN 55011 class A approval, low I/O leakage current of 2μA max, and an operating ambient temperature range from -40°C to +95°C without derating, achieved through high efficiency up to 89%.

Aligned with the 4th edition medical EMC standard, the MIW06M series holds medical safety approval with 2xMOPP (Means Of Patient Protection) per the 3rd edition of IEC/EN 60601-1 & ANSI/AAMI ES 60601-1, incorporating an 8mm creepage and clearance.

In adherence to ISO 14971 Medical Device Risk Management, the MIW06M series undergoes a thorough risk assessment process. This ensures not only compliance with high-performance standards but also alignment with the stringent safety benchmarks outlined in ISO 14971. Elevate your medical devices with the MINMAX MIW06M series – the integration of advanced technology, safety, performance, and Medical Device Risk Management Report Acquisition.

**Model Selection Guide**

Model Number	Input Voltage (Range) VDC	Output Voltage VDC	Output Current Max. mA	Input Current		Over Voltage Protection VDC	Max. capacitive Load μF	Efficiency (typ.) @Max. Load %
				@Max. Load mA(typ.)	@No Load mA(typ.)			
MIW06-12S05M	12 (9 ~ 18)	5	1200	595	10	6.2	1500	84
MIW06-12S12M		12	500	575		15	260	87
MIW06-12S15M		15	400	581		18	210	86
MIW06-12D12M		±12	±250	575		±15	150#	87
MIW06-12D15M		±15	±200	575		±18	110#	87
MIW06-24S05M	24 (18 ~ 36)	5	1200	298	8	6.2	1500	84
MIW06-24S12M		12	500	287		15	260	87
MIW06-24S15M		15	400	287		18	210	87
MIW06-24D12M		±12	±250	291		±15	150#	86
MIW06-24D15M		±15	±200	287		±18	110#	87
MIW06-48S05M	48 (36 ~75)	5	1200	149	5	6.2	1500	84
MIW06-48S12M		12	500	144		15	260	87
MIW06-48S15M		15	400	140		18	210	89
MIW06-48D12M		±12	±250	144		±15	150#	87
MIW06-48D15M		±15	±200	142		±18	110#	88

# For each output

Input Specifications					
Parameter	Model	Min.	Typ.	Max.	Unit
Input Surge Voltage (1 sec. max.)	12V Input Models	-0.7	---	25	VDC
	24V Input Models	-0.7	---	50	
	48V Input Models	-0.7	---	100	
Start-Up Threshold Voltage	12V Input Models	---	---	9	
	24V Input Models	---	---	18	
	48V Input Models	---	---	36	
Under Voltage Shutdown	12V Input Models	---	8	---	
	24V Input Models	---	16	---	
	48V Input Models	---	34	---	
Start Up Time (Power On)	Nominal Vin and Constant Resistive Load	---	---	30	ms
Input Filter	All Models	Internal Pi Type			

Output Specifications						
Parameter	Conditions	Min.	Typ.	Max.	Unit	
Output Voltage Setting Accuracy		---	---	±1.0	%Vnom.	
Output Voltage Balance	Dual Output, Balanced Loads	---	±0.5	±2.0	%	
Line Regulation	Vin=Min. to Max. @Full Load	---	---	±0.5	%	
Load Regulation	Io=0% to 100%	Single Output	---	---	±0.5	%
		Dual Output	---	---	±1.0	%
Load Cross Regulation (Dual Output)	Asymmetrical Load 25%/100% Full Load	---	---	±5.0	%	
Minimum Load	No minimum Load Requirement					
Ripple & Noise	0-20 MHz Bandwidth	Measured with a 1μF MLCC	---	70	mV <sub>P-P</sub>	
Transient Recovery Time	25% Load Step Change	---	300	---	μsec	
Transient Response Deviation		---	±3	±5	%	
Temperature Coefficient		---	±0.01	±0.02	%/°C	
Over Load Protection		---	150	---	%	
Short Circuit Protection	Continuous, Automatic Recovery (Hiccup Mode 0.5Hz typ.)					

Isolation, Safety Standards					
Parameter	Conditions	Min.	Typ.	Max.	Unit
I/O Isolation Voltage	60 Seconds Reinforced insulation, rated for 250Vrms working voltage	5000	---	---	VAC
Leakage Current	240VAC, 60Hz	---	---	2	μA
I/O Isolation Resistance	500 VDC	10	---	---	GΩ
I/O Isolation Capacitance	100kHz, 1V	---	---	40	pF
Safety Standards	ANSI/AAMI ES 60601-1, CAN/CSA-C22.2 No. 60601-1 IEC/EN 60601-1 3 <sup>rd</sup> Edition 2xMOPP				
Safety Approvals	ANSI/AAMI ES 60601-1 2xMOPP recognition(UL certificate), IEC/EN 60601-1 3 <sup>rd</sup> Edition(CB-report)				

General Specifications					
Parameter	Conditions	Min.	Typ.	Max.	Unit
Switching Frequency		---	330	---	kHz
MTBF(calculated)	MIL-HDBK-217F@25°C, Ground Benign	4,667,952	---	---	Hours

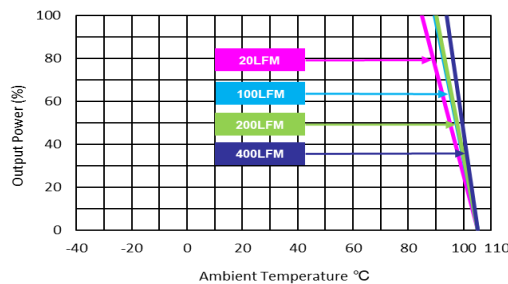
### EMC Specifications

Parameter	Standards & Level		Performance
EMI <sub>(s)</sub>	Conduction	EN 55011	Without external components
	Radiation		With external components
EMS <sub>(s)</sub>	EN 60601-1-2 4 <sup>th</sup>		
	ESD	Direct discharge	Indirect discharge HCP & VCP Contact ± 8kV
		EN 61000-4-2 Air ± 15kV	
	Radiated immunity	EN 61000-4-3 10V/m	
	Fast transient	EN 61000-4-4 ±2kV	
	Surge	EN 61000-4-5 ±2kV	
	Conducted immunity	EN 61000-4-6 10Vrms	
PFMF	EN 61000-4-8 100A/m		

### Environmental Specifications

Parameter	Min.	Max.	Unit
Operating Ambient Temperature Range (See Power Derating Curve)	-40	+95	°C
Case Temperature	---	+105	°C
Storage Temperature Range	-50	+125	°C
Humidity (non condensing)	---	95	% rel. H
Lead Temperature (1.5mm from case for 10Sec.)	---	260	°C

### Power Derating Curve

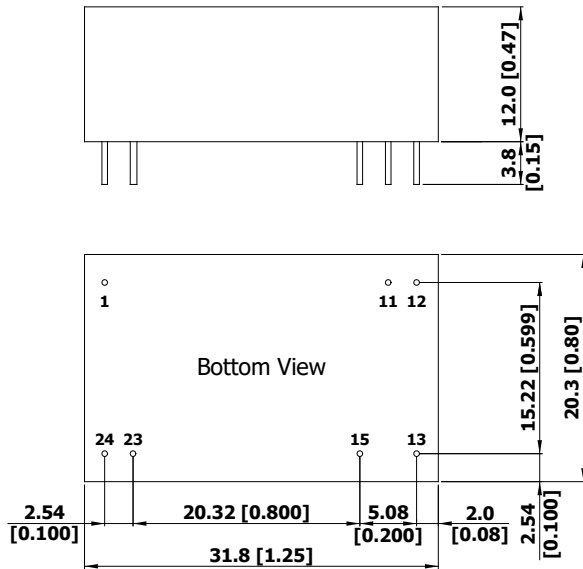


### Notes

- Specifications typical at Ta=+25°C, resistive load, nominal input voltage and rated output current unless otherwise noted.
- Transient recovery time is measured to within 1% error band for a step change in output load of 75% to 100%.
- We recommend to protect the converter by a slow blow fuse in the input supply line.
- Other input and output voltage may be available, please contact MINMAX.
- The external components might be required to meet EMI/EMS standard for some of test items. Please contact MINMAX for the solution in detail.
- Specifications are subject to change without notice.
- The repeated high voltage isolation testing of the converter can degrade isolation capability, to a lesser or greater degree depending on materials, construction, environment and reflow solder process. Any material is susceptible to eventual chemical degradation when subject to very high applied voltages thus implying that the number of tests should be strictly limited. We therefore strongly advise against repeated high voltage isolation testing, but if it is absolutely required, that the voltage be reduced by 20% from specified test voltage. Furthermore, the high voltage isolation capability after reflow solder process should be evaluated as it is applied on system.

**Package Specifications**

## Mechanical Dimensions



## Pin Connections

Pin	Single Output	Dual Output	Diameter mm (inches)
1	+Vin	+Vin	Ø 0.6 [0.02]
11	No Pin	Common	Ø 0.6 [0.02]
12	-Vout	No Pin	Ø 0.6 [0.02]
13	+Vout	-Vout	Ø 0.6 [0.02]
15	No Pin	+Vout	Ø 0.6 [0.02]
23	-Vin	-Vin	Ø 0.6 [0.02]
24	-Vin	-Vin	Ø 0.6 [0.02]

- ▶ All dimensions in mm (inches)
- ▶ Tolerance: X.X±0.5 (X.XX±0.02)  
X.XX±0.25 (X.XXX±0.01)
- ▶ Pin diameter tolerance: X.X±0.05 (X.XX±0.002)

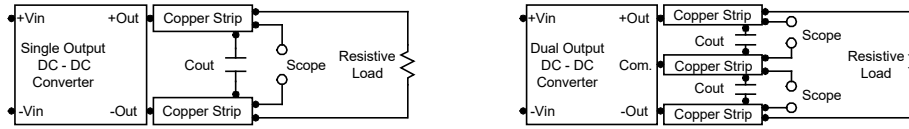
**Physical Characteristics**

Case Size	: 31.8x20.3x12.0mm (1.25x0.80x0.47 inches)
Case Material	: Plastic resin (flammability to UL 94V-0 rated)
Pin Material	: Copper Alloy
Weight	: 15.5g

## Test Setup

### Peak-to-Peak Output Noise Measurement Test

Refer to the output specifications or add 4.7 $\mu$ F capacitor if the output specifications undefine Cout. Scope measurement should be made by using a BNC socket, measurement bandwidth is 0-20 MHz. Position the load between 50 mm and 75 mm from the DC-DC Converter.



## Technical Notes

### Overload Protection

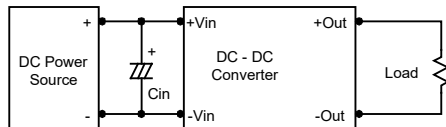
To provide hiccup mode protection in a fault (output overload) condition, the unit is equipped with internal current limiting circuitry and can endure overload for an unlimited duration.

### Overvoltage Protection

The output overvoltage clamp consists of control circuitry, which is independent of the primary regulation loop, that monitors the voltage on the output terminals. The control loop of the clamp has a higher voltage set point than the primary loop. This provides a redundant voltage control that reduces the risk of output overvoltage. The OVP level can be found in the output data.

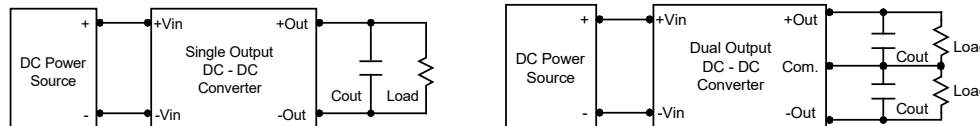
### Input Source Impedance

The power module should be connected to a low ac-impedance input source. Highly inductive source impedances can affect the stability of the power module. In applications where power is supplied over long lines and output loading is high, it may be necessary to use a capacitor on the input to insure startup. By using a good quality low Equivalent Series Resistance (ESR < 1.0 $\Omega$  at 100 kHz) capacitor of a 10 $\mu$ F for the 12V input devices and a 4.7 $\mu$ F for the 24V input devices and a 2.2 $\mu$ F for the 48V devices, capacitor mounted close to the power module helps ensure stability of the unit.



### Output Ripple Reduction

A good quality low ESR capacitor placed as close as practicable across the load will give the best ripple and noise performance. To reduce output ripple, it is recommended to use 1 $\mu$ F capacitors at the output.



### Maximum Capacitive Load

The MIW06M series has limitation of maximum connected capacitance on the output. The power module may operate in current limiting mode during start-up, affecting the ramp-up and the startup time. Connect capacitors at the point of load for best performance. The maximum capacitance can be found in the data sheet.

### Thermal Considerations

Many conditions affect the thermal performance of the power module, such as orientation, airflow over the module and board spacing. To avoid exceeding the maximum temperature rating of the components inside the power module, the case temperature must be kept below 105 $^{\circ}$ C. The derating curves are determined from measurements obtained in a test setup.

