

TEMPO



TEMPO

TEMPO enclosures are designed to save you time and money. TEMPO is easy to assemble and install. The flat cover design offers ample real estate for printing, labels or switches. This water tight box, keeps your components dry and dust free, thanks in part to the Formed-In-Place PUR gasket. Select sizes feature transparent covers and formed-in-place metric knock-outs.

Features include:

- Sizes range from 3.7x 2.6 x 2.4 inches up to 13.4 x 11.4 x 4.6 inches
- UL Listed Rated NEMA 4X
- IK 07 / IP 65
- Molded in impact resistant polycarbonate
- Opaque and transparent covers
- Metric knock-outs available
- Formed-In-Place PUR gasket
- UV resistant UL 508
- Watertight
- Economical soft strap cover hinge
- Easy DIN-Rail / back panel installation



Polycarbonate:

UL Type 4 & 4X

IP 65

IK 07

UV - Protected



Order Symbol	Dimensions	Description
TPC 090706	3.7 x 2.6 x 2.4 inches	PC Enclosure Opaque Cover
TPCM 090706	3.7 x 2.6 x 2.4 inches	PC Enclosure Opaque Cover w/ KO Base
TPC 111107	4.3 x 4.3 x 2.6 inches	PC Enclosure Opaque Cover
TPCM 111107	4.3 x 4.3 x 2.6 inches	PC Enclosure Opaque Cover w/ KO Base
TPC 131007	5.1 x 3.7 x 2.6 inches	PC Enclosure Opaque Cover
TPCM 131007	5.1 x 3.7 x 2.6 inches	PC Enclosure Opaque Cover w/ KO Base
TPC 131308	5.1 x 5.1 x 3.0 inches	PC Enclosure Opaque Cover
TPCM 131308	5.1 x 5.1 x 3.0 inches	PC Enclosure Opaque Cover w/ KO Base
TPC 191209 (T)	7.4 x 4.8 x 3.5 inches	PC Enclosure Opaque / Transparent Cover
TPCM 191209 (T)	7.4 x 4.8 x 3.5 inches	PC Enclosure Opaque / Transparent Cover w/ KO Base
TPC 201610 (T)	7.9 x 6.4 x 3.9 inches	PC Enclosure Opaque / Transparent Cover
TPCM 201610 (T)	7.9 x 6.4 x 3.9 inches	PC Enclosure Opaque / Transparent Cover w/ KO Base
TPC 241911 (T)	9.4 x 7.5 x 4.2 inches	PC Enclosure Opaque / Transparent Cover
TPC 292411 (T)	11.4 x 9.4 x 4.2 inches	PC Enclosure Opaque / Transparent Cover
TPC 342912 (T)	13.4 x 11.4 x 4.6 inches	PC Enclosure Opaque / Transparent Cover

Enclosed in Seconds!

The TEMPO is a sturdy enclosure that is quick and easy to install and gets the job done without breaking the budget.

Molded in Fibox polycarbonate, the TEMPO delivers the quality you expect from a FIBOX enclosure.

Dimensions range from 3.7 x 2.6 x 2.4 inches to 13.4 x 11.4 x 4.6 inches.

With a wide range of sizes, options, and accessories, the TEMPO keeps pace with your needs to increase productivity while conserving resources.

Cover

- Opens 180 °
- The flat cover provides plenty of real estate for printing
- Soft hinge requires no tools or screws
- Tamper resistant screw design
- Transparent covers available

Membrane, knock-out and smooth versions

Cable entry knock-outs on four sides of the base

Modern design which maximizes installation space even in the smallest enclosures – easy installation

DIN-Rails and adapters make it easy to install the terminals

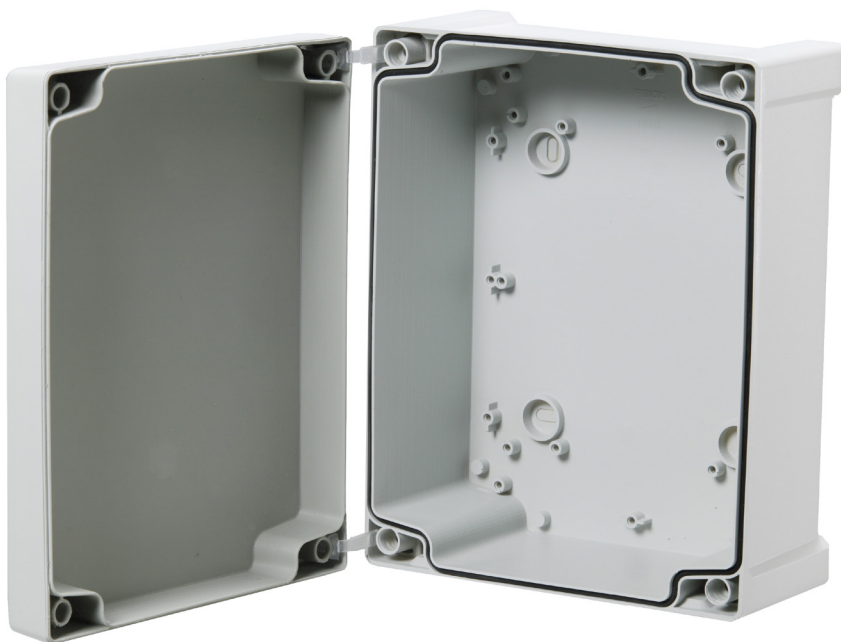
Tempo enclosure includes rapid hinges that allow using all cover screws, maintaining high IP 65 rating

Wire sealing or deco plugs for added security

Material Polycarbonate (PC)

Corner design

- The reinforced corner provides extra support



Mounting Pods

- On the base for back panel or Din-Rails

Gasket

- Formed-in-place PUR gasket

Knock-outs

- Preformed metric knock-out base

Customization services

All Fibox TEMPO enclosures can be customized to meet your specifications. Sophisticated CNC machinery can fabricate your enclosures with holes, cutouts, recesses, and more. Enclosures are available with custom colors, while text and graphics can be printed with picture-perfect quality. Fibox stocks all standard accessories and can quickly install them, giving you a ready-made solution right out of the box.

TEMPO accessories

Galvanized Steel Back Panel	Dimensions
MP 1912	5.5 x 3.9 inches
MP 2016	6.1 x 5.5 inches
MP 2919	8.3 x 6.3 inches
MP 2924	10.4 x 8.5 inches
MP 3429	12.4 x 10.4 inches

DIN - Rail	Dimensions
MIV 10	1.4 x 3.9 inches
DH 3	1.4 X 5.5 inches
EKV 12	1.4 X 6.3 inches
DR 215	1.4 X 8.5 inches
DR 265	1.4 X 10.4 inches
ARH 2320	1.4 X 7.1 inches

Wall Fastening Lug	Material
FP 10674	Polyamide



Polyamide Mounting Feet

Technical Information

Property	Polycarbonate (PC)
Environmental ingress	UL Type 4 and 4X
Impact resistance (EN 62262)	IK10 +35°C / IK09 -25°C
Temperature Range: °Celsius	-40° . . .+140°C
Short term °Fahrenheit	-40° . . .+284°F
Temperature Range: °Celsius	-40° . . .+80°C
Long term °Fahrenheit	-40° . . .+175°F
Electrical insulation	Fully insulated
Color	RAL 7035 - Light gray
Gasket	Formed in place polyurethane (PUR)
Glow Wire Test (IEC 695-2-1) Self-extinguishing (PC)	960°
Flammability rating	Enclosure flammability rating per UL 508
Toxicity	Non-Toxic, halogen free, RoHS compliant
UV Resistance	Complies with UL 508
Chemical Resistance	Good



Conformity of Standard

N/IEC 62208, EN/IEC 61439-1-4

RoHS directive 2001/65/EU

Low-voltage Directive 2006/95/EC (p to 1500 VCD EN 62208:200