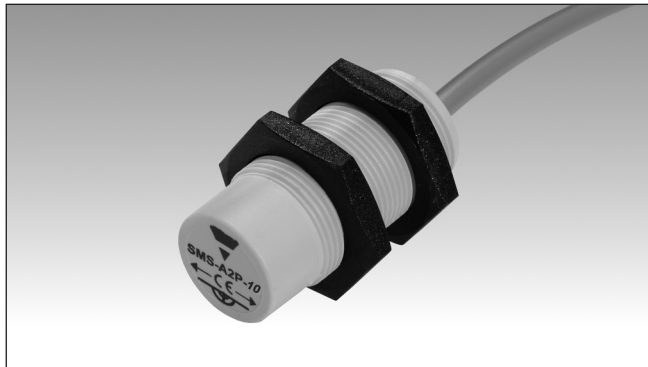


Safety Magnetic Sensors

Cylindrical Safety Magnetic Sensors

Type SMSA2P10



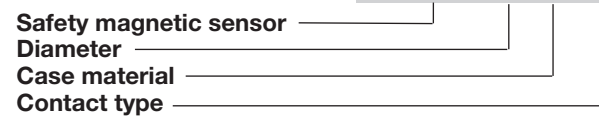
- Suitable for applications in safety category 3 in accordance with EN ISO13849-1:2015 when connected to appropriate safety devices
- 1 NO output
- Cable output connection
- Cylindrical housing
- Multiple flux coding
- In compliance with CEI EN 60947-5-3:2000

Product Description

The SMSA2P10 is designed applications up safety Category 3 in accordance with EN ISO 12100:2010, EN 60204-1 and EN 1088. It is characterized by multiple flux coding and is suited for applications up safety Category 3 in accordance with EN ISO13849-1:2015 when connected to appropriate safety devices.

Ordering Key

SMS A2 P 10



Type Selection

| Output | Operating distance | Safety category | Item code |
|--------|--------------------|-----------------|-------------|
| 1 NO | 16 mm | 3 | SMS A2 P 10 |

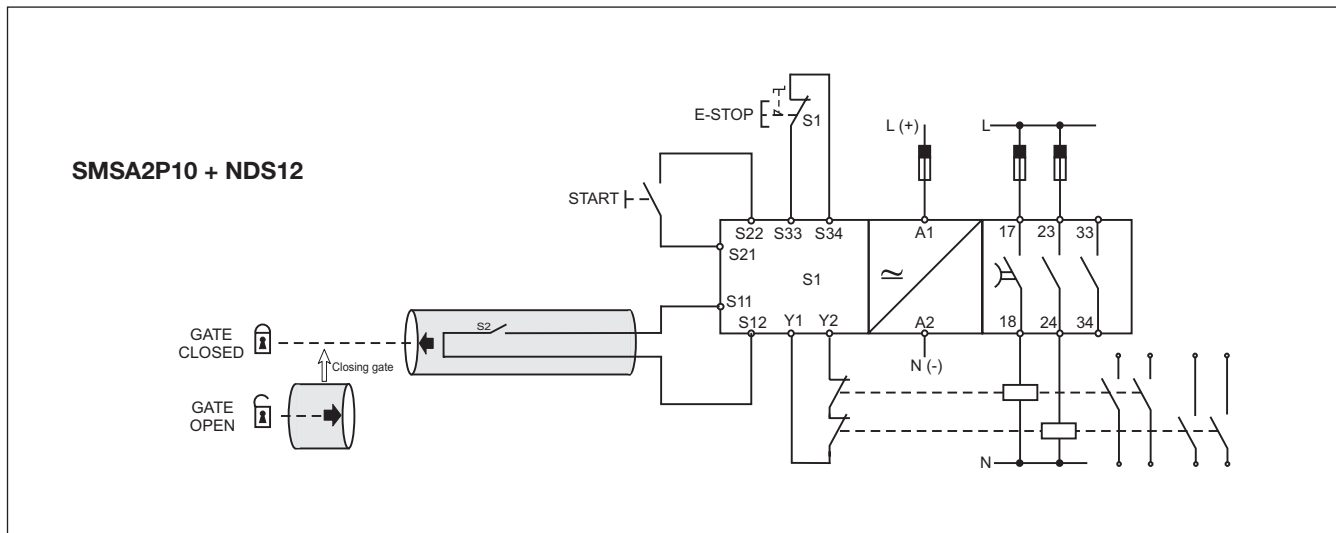
Output Specifications

| | |
|--------------------------|--|
| Output | Category 3 (EN ISO13849-1:2015) 1 NO |
| Output connection | Cable (PVC, AWG 22, L = 2 m, 2 x 0.35 mm ²) |
| Contact ratings | |
| Max Switching Voltage | 100 VAC |
| Max Switching Current | 0.25 A |
| Max Switching Power | 5 VA |

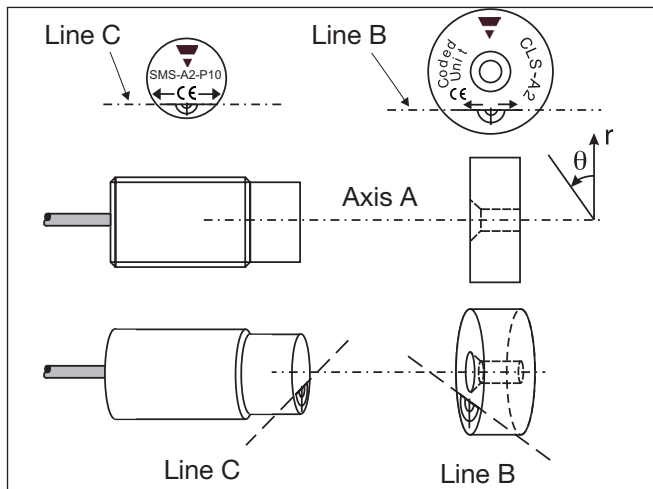
General Specifications

| | |
|-------------------------------|-----------------|
| Operating distance ON | 16 ± 5 mm |
| Release distance OFF | 20 ± 6 mm |
| Reset distance | 20 ± 6 mm |
| Suitable magnetic unit | CLSA2 |
| Misalignment | max ± 2 mm |
| Housing | |
| Dimensions | M18x1 |
| Material | PBT + 30% glass |
| Weight | Approx. 70 g |
| Environment | |
| Degree of protection | IP 67 |
| Operating temperature | -25 ÷ +70 °C |
| Storage temperature | -25 ÷ +70 °C |
| CE-marking | Yes |

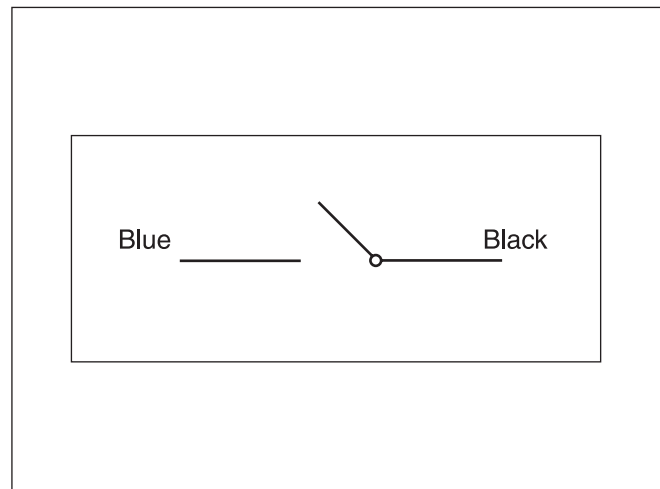
Application



Operating Directions



Wiring Diagrams



Dimensions

