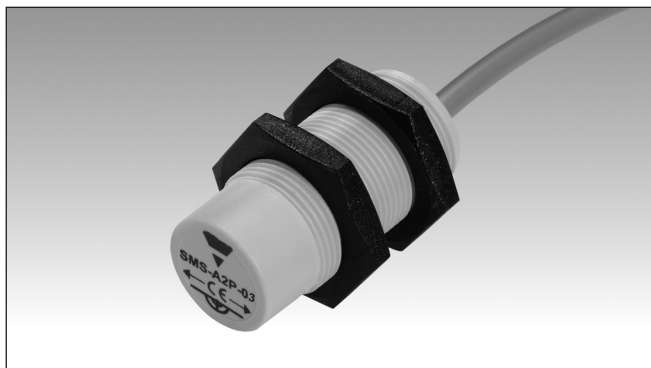


Safety Magnetic Sensors

Cylindrical Safety Magnetic Sensors

Types SMSA2P03, SMSA3P03



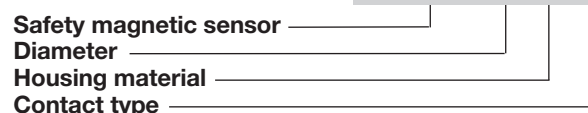
- Suitable for applications in safety category 4 in accordance with EN ISO13849-1:2015 when connected to appropriate safety devices
- 2 NO outputs
- Cable output connection
- Cylindrical housing
- Multiple flux coding
- In compliance with CEI EN 60947-5-3:2000

Product Description

The SMSAXP03 series is designed in conformity with EN ISO 12100:2010, EN 60204-1 and EN 1088. It is characterised by multiple flux coding and is suited for applications up to safety Category 4, in accordance with EN ISO13849-1:2015 when connected to appropriate safety devices.

Ordering Key

SMS A2 P 03



Type Selection

Output	Operating distance	Safety category	Item code
2 NO	16 mm	4	SMSA2P03
2 NO	16 mm	4	SMSA3P03

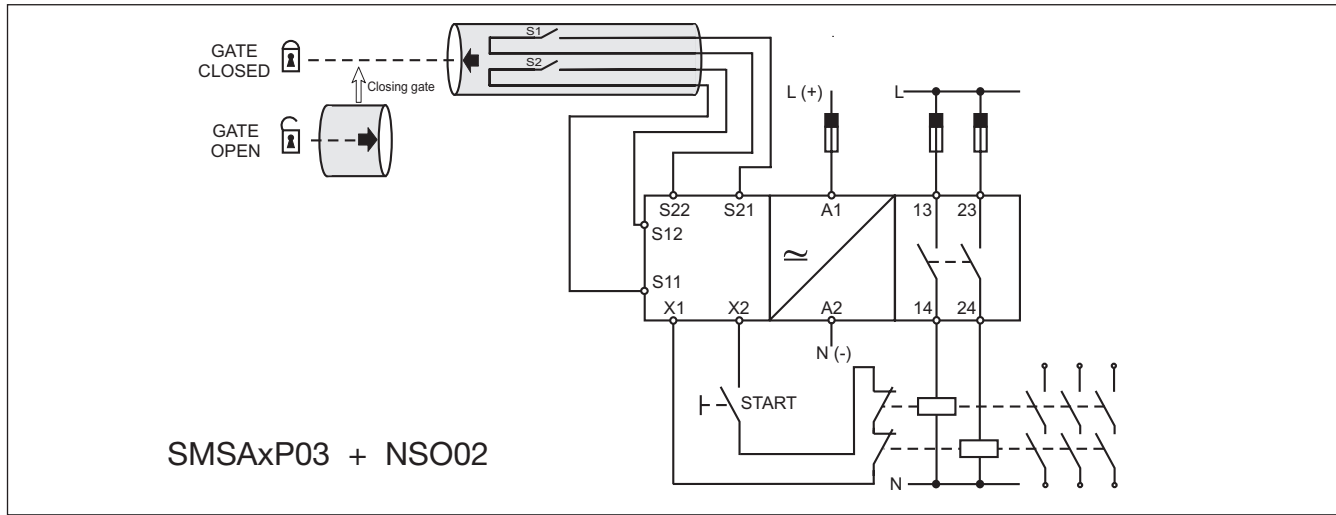
Output Specifications

Output	Category 4 (EN ISO13849-1:2015) 2 NO
Output connection	Cable (PVC, AWG 26, L = 2 m, 4 x 0.15 mm ²)
Contact ratings	
Max Switching Voltage	100 VAC
Max Switching Current	0.25 A
Max Switching Power	5 VA

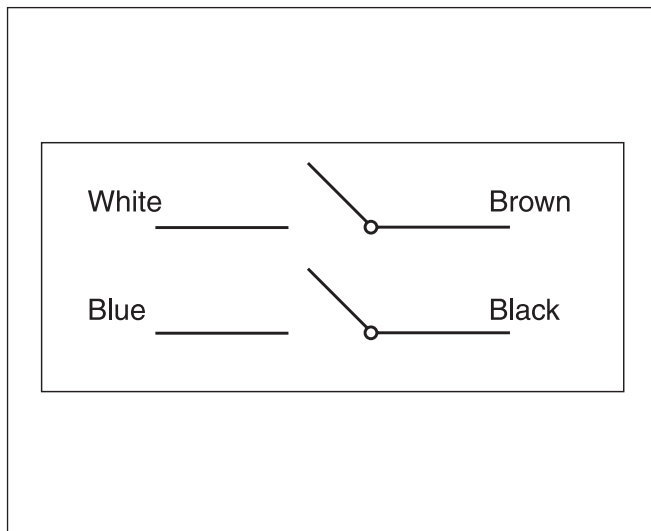
General Specifications

Operating distance ON	16 ± 5 mm
Release distance OFF	20 ± 6 mm
Reset distance	20 ± 6 mm
Suitable magnetic unit	
SMSA2P03	CLSA2
SMSA3P03	CLSA3
Misalignment	max ± 2 mm
Housing	
Dimensions	
SMSA2P03	M18x1
SMSA3P03	M30x1.5
Material	Plastic
Weight	Approx. 70 g
Environment	
Degree of protection	IP 67
Operating temperature	-25 ÷ +70 °C
Storage temperature	-25 ÷ +70 °C
CE-marking	Yes

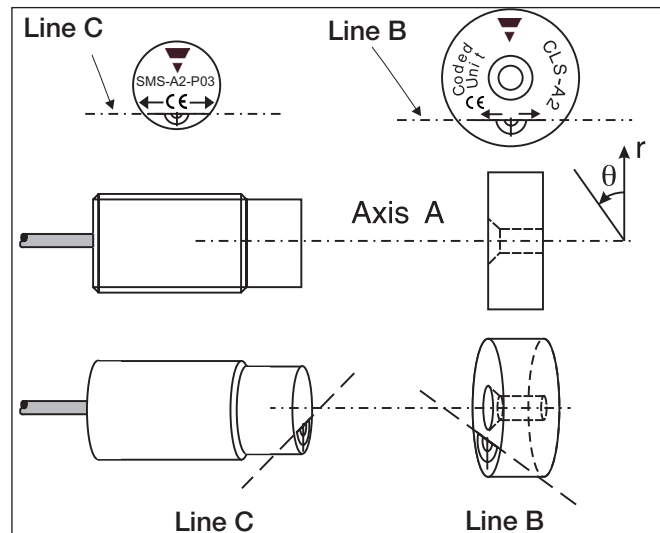
Application



Wiring Diagrams



Operating Directions



Dimensions

