

Type LPA-02

In-Line Fuse Holder - Heavy Duty

1/4" x 1 1/4" (6.3 x 32mm) Fuses



www.optifuse.com (619) 593-5050

Ratings:

Fuse Type: 1/4" x 1 1/4" (6.3 x 32mm)

Electrical Rating: 250VAC

Body: Nylon with glass fiber

Contacts: Brass

Standard Wire Sizes: #12 ~ #18 AWG

Standard Wire Colors: Red **Standard**

Body colors: White

Standard Wire Length: 4 inches

Available in various wire gauges and lengths, and body and wire colors.

Contact factory for those not listed above.

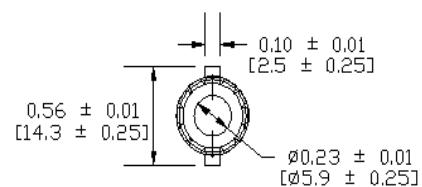
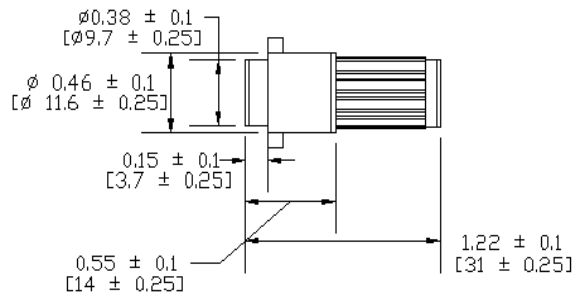
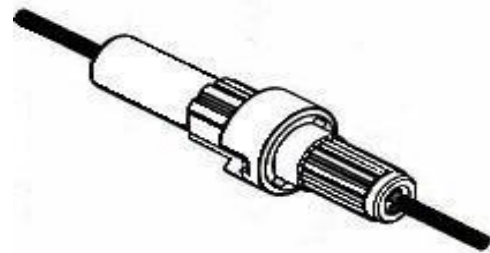
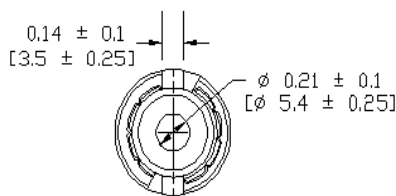
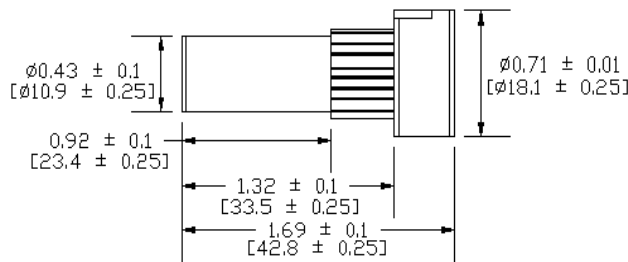
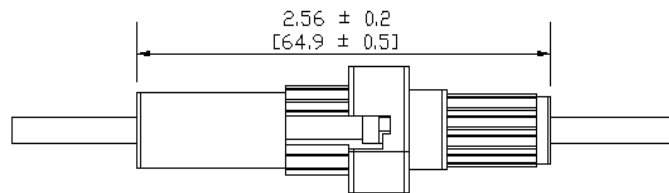
Mechanical Dimensions: Inches [mm]

Part number format

LPA-02W-##R

where ## = Wire gauge

Wire Gauge	Max. Amperage
12 AWG	30 A
14 AWG	20 A
16 AWG	15 A
18 AWG	10 A



Warning:



- Operation beyond the specified maximum ratings or improper use may result in damage and possible electrical arcing and/or flame.
- Avoid contact of device with chemical solvent. Prolonged contact may damage the device performance.
- Not designed for prolonged liquid exposure or submersible applications.