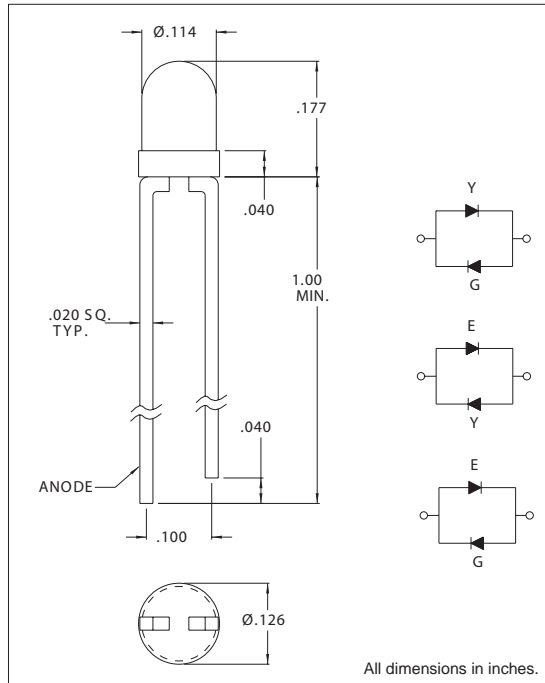




T-1 Super Brite Bi-Color LED Lamps

DESCRIPTION AND FEATURES



These T-1 Bi-Color LED lamps provide exceptional light output in a variety of color combinations. These lamps can provide three-state status indication when their off-state White is included. They are available in a variety of color combinations, in wide view angle diffused packages.

ELECTRO-OPTICAL CHARACTERISTICS AND RATINGS

PART NUMBER	CMD264-3EGW		CMD264-3EYW		CMD264-3YGW	
	H.E.Red	Green	H.E.Red	Yellow	Yellow	Green
Output Color	H.E.Red	Green	H.E.Red	Yellow	Yellow	Green
Diffusion	Diffused	Diffused	Diffused	Diffused	Diffused	Diffused
Package Color	White	White	White	White	White	White
Test Current (mA)	20	20	20	20	20	20
Forward Voltage Typ. (V)	2.0	2.1	2.0	2.0	2.0	2.1
Forward Voltage Max. (V)	2.8	2.8	2.8	2.8	2.8	2.8
Luminous Intensity Min. (mcd)	7.0	6.5	7.0	6.0	6.0	6.5
Luminous Intensity Typ. (mcd)	16	15	16	14	14	15
Luminous Intensity Max. (mcd)	-	-	-	-	-	-
Peak Wavelength (nm)	635	565	635	585	585	565
Viewing Angle 2θ 1/2 (degrees)	60	60	60	60	60	60
Power Dissipation (mW)	105	105	105	105	105	105
Operating Temperature (°C)	-40 to +85	-40 to +85	-40 to +85	-40 to +85	-40 to +85	-40 to +85
Storage Temperature (°C)	-40 to +85	-40 to +85	-40 to +85	-40 to +85	-40 to +85	-40 to +85
Peak Forward Current (T<10 mS)	150	150	150	150	150	150
Reverse Voltage (IR=100µA) (V)	5	5	5	5	5	5
Lead Solder Time @ 260°C	5	5	5	5	5	5