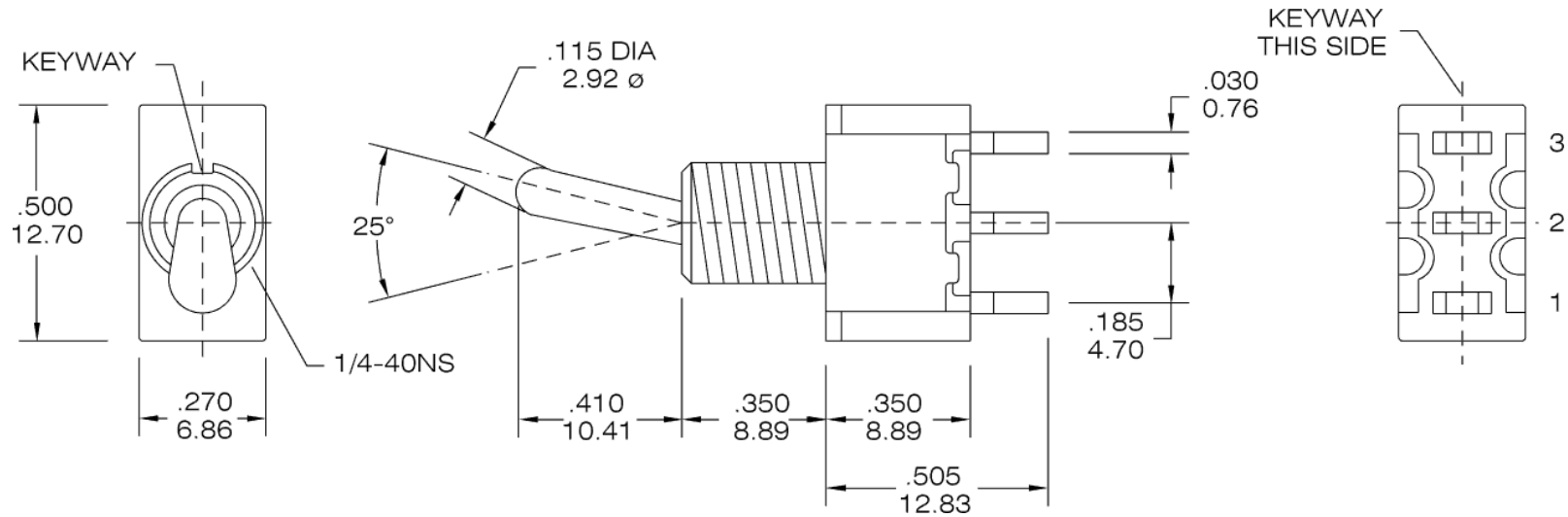
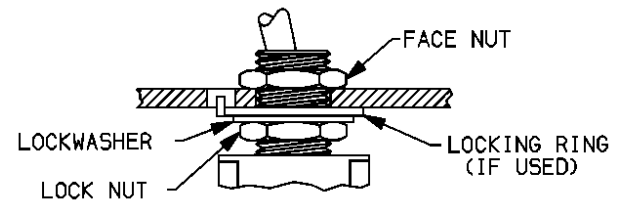
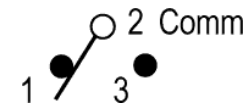


Product Drawing



Use diagram shown above

PCB Footprint



Typical Assembly with Locking Ring
 Locknut should always be used with non-flanged bushing
 To prevent damaging panel front, always tighten locknut at the back of the panel.

				Description:	Standard outline drawing.
Page:	1	Date:	2003-12-02	P/N	T8013
of:	1	Revision:	1.0		



800-227-0075

http://www.vimex.com

Product Specification



GENERAL SPECIFICATION

1.0 SCOPE

This specification defines the basic requirements for all T80T series Miniature Toggle Switches. Specifications on individual data sheets supersede any general specifications provided herein.

2.0 MECHANICAL

2.1 Dimensions: This device shall have the dimensions as shown in the outline drawing. All measurements stated in millimeters.

2.2 Material: Standard materials listed. Others available on request.

2.2.1 Case: diallyl phthalate (DAP).

2.2.2 Toggle Handle: Brass, chrome plated.

2.2.3 Bushing: Brass, nickel plated.

2.2.4 Housing: Stainless Steel.

2.2.5 Contact & Terminal: copper alloy, silver plated.

2.2.6 Terminal Seal: Epoxy (optional)

2.3 Durability/Electrical Life: 50,000 make and break cycles at full load.

2.4 Weight & packing: Polybag or plastic tray inside corrugated cardboard carton. Quantities vary with item.

3.0 ELECTRICAL

3.1 Rated Voltage: per following table.

CONTACT MATERIAL	TERMINAL MATERIAL	RATING
Silver plated	Silver plated	5A@120VACor 28VDC; 2A@250VAC
Gold plated over Nickel plated	Gold plated over Nickel plated	0.4VA@20VACor VDC maximum
Gold plated over Silver plated	Gold plated over Silver plated	0.4VA@20VACor VDC maximum or 5A@120VACor 28VDC; 2A@250VAC
Gold plated over Nickel plated	Tin-lead over Nickel plated	0.4VA@20VACor VDC maximum

3.2 Dielectric Strength: 1,500 V RMS @ sea level.

3.3 Contact Resistance: 10mΩ maximum initial @2-4 VDC, 100mA

3.4 Insulation Resistance: 1,000MΩ minimum.

3.5 Operating Temperature: -30°C to +85°C.

				Description:	General specifications for T80T Miniature Toggle Switches.
Page:	1	Date:	2003-12-02	P/N	T80T
of:	1	Revision:	1.0		



800-227-0075

http://www.vimex.com

Part Number System

T 8 0 1 3 - S E C Q - E - S 2 0 - T 1 - 2

Switch Function (SPDT)				Actuator		Bushing			Termination		Contact	Epoxy Seal	Vertical Support Bracket		Cap/ Sealing Hood		Cap Color	
Model No.	Switching Position			S		E	(STD)	8.89	B	solder lug	Q	(none)	(none)		Rubber Hood			
T8013	ON	none	ON	T	5.08	M	non-thrd	8.89	C	pc 1.27	R	E	S20	11.68	E1	E bush		
T8013A	ON	none	(ON)	X	13.97	K	metric	8.89	D	quick con	G		S25	16.00	E2	15/32		
T8014	ON	OFF	ON	W	21.34	F		7.10	D1	wire wrap (19.05)	K		S35	11.68	K1	K bush		
T8014A	(ON)	OFF	(ON)	V	16.26	N	non-thrd	7.10	D3	wire wrap (10.8)			S40	16.00	Actuator Cap			
T8014B	ON	OFF	(ON)	Y	21.34	G		7.52					Sanp-In Brackets		T1	10.29 actuator S	0	Clear
Term Comm	2-3	open	2-1	Flatted Toggle		G1	non-thrd	7.52					V20	11.68	T2	7.28 actuator T	1	White
				U	11.43	H		8.00					V25	16.00			2	Black
				U1	7.20	H1	non-thrd	8.00					V35	11.68			3	Red
				U2	21.30	J	(long)	9.60					V40	16.00			4	Yellow
				15/32 bush		J1	non-thrd	9.60									5	Blue
				Z	11.68	L	splash-prf	7.47									6	Green
				Z1	17.45	none											7	Orange
				Locking Lever		No code if Z/Z1/LK/LK1 actuator unless splash proof or non-thread chosen												
				LK	Round													
				LK1	Flat top													

See following pages for details

Page:	1	Date:	2003-12-17	Description:	Build a part number.
of:	7	Revision:	1.0	P/N	T8013



800-227-0075

<http://www.vimex.com>

Part Number System

Actuator Options

S (standard)	T (standard)	X (long)	W (long)	V (long)	Y (plastic)	Y handle color code	Color
						1	White
						2	Black(std)
						3	Red
						4	Orange
						5	Yellow
						6	Green
						7	Blue
						8	Brown
						9	Gray
<p>Actuator height shown assumes 'E' bushing. Height dimension will be different with other bushings</p>						<p>Black (2) is standard inquire for availability.</p>	

Flatted Actuators (only available with 'H' or 'H1' or 'H2' bushing)

U (standard)	U1 (short)	U2 (long)

Page:	2	Date:	2003-12-17	Description:	Build a part number.
of:	7	Revision:	1.0	P/N	T8013



800-227-0075

http://www.vimex.com

Part Number System

Large Toggle Lever		Locking Lever	
Z	Z1	LK (round top)	LK1 (flat top)
<p>Bushing option code not required unless 'L' splashproof bushing is ordered</p>		<p>Bushing option code not required unless: (1) 'L' splashproof bushing ordered (i.e. LKL or LK1L) (2) non-thread bushing required choose bushing code 'N' (i.e. LKN or LK1N) Locking Levers ONLY available with ON-ON or ON-OFF-ON action.</p>	

Toggle Cap Option		Toggle Cap Color Option	
T1 (for 'S' actuator only)	T2 (for 'T' actuator only)	Code	Color
		0	Transparent
		1	White
		2	Black
		3	Red
		4	Yellow
		5	Blue
		6	Green
		7	Orange

Page:	3	Date:	2003-12-17	Description:	Build a part number.
of:	7	Revision:	1.0	P/N	T8013



800-227-0075

http://www.vimex.com

Part Number System

Bushing Option

E threaded (standard) M non-thread	F threaded N non-thread	G threaded (standard) G1 non-thread	H threaded (standard) H1 non-thread H2 Metric	J threaded (standard) J1 non-thread	K Metric

Splash proof Solution

L

--	--	--	--

Large Toggle (Z or Z1 actuator)

Internal actuator seal standard. Bushing seal washer available

--

Description:

Build a part number.

Page:	4	Date:	2003-12-17
of:	7	Revision:	1.0

P/N

T8013



800-227-0075

http://www.vimex.com

Part Number System

Panel Mounting

1/4" Bushing			Metric Bushing		15/32" Bushing	
<p>keyway</p>	<p>flatted D</p>	<p>with locking ring</p>	<p>keyway</p>	<p>with locking ring</p>	<p>keyway</p>	<p>with locking ring</p>

Terminal Option

'B' solder lug	'C' printed circuit	'D' quick connect	'D1' or 'D2' wirewrap	Wirewrap terminal code	A dimension
				D1	.750" 19.05mm
				D2	.425 10.8mm

Description:		Build a part number.	
P/N		T8013	

Page:	5	Date:	2003-12-17
of:	7	Revision:	1.0



800-227-0075

http://www.vimex.com

Part Number System

Contact Material Options

Code	Contact Material	Terminal Material	Rating
Q	Silver plated	Silver plated	5A @ 120VAC or 28VDC; 2A @ 250VAC
R	Gold plated over nickel plated	Gold plated over nickel plated	0.4VA max. @ 20VAC or VDC max.
G	Gold plated over silver plated	Gold plated over silver plated	0.4VA max. @ 20VAC or VDC max. <i>or</i> 5A @ 120VAC or 28VDC; 2A @ 250VAC
K	Gold plated over nickel plated	Tin-lead over nickel plated	0.4VA max. @ 20VAC or VDC max.

Vertical Support Bracket Option

S20 / S25 / V20 / V25 / S35 / S40 / V35 / V40

					Option code	'A' dimension
					S20/V20	.460" 11.68mm
					S25/V25	.630" 16.00mm
V20/V25 are snap in type						
					Option code	'A' dimension
					S35/V35	.460" 11.68mm
					S40/V40	.630" 16.00mm
V35/V40 are snap in type						

Description:

Build a part number.

Page:	6	Date:	2003-12-17
of:	7	Revision:	1.0

P/N

T8013



800-227-0075

http://www.vimex.com

Part Number System

Hardware					
1/4-40NS hex (standard)	1/4-40NS DRESS NUT	Metric hex	15/32-32NS hex (std.)	15/32-32NS DRESS NUT	15/32-32NS hex
1/4" & M6 Lock Ring	Flatted bush Lock Ring	15/32" Lock Ring	1/4" & M6 Lock Washer	15/32" Lock Washer	

				Description:	Build a part number.
Page:	7	Date:	2003-12-17	P/N	T8013
of:	7	Revision:	1.0		