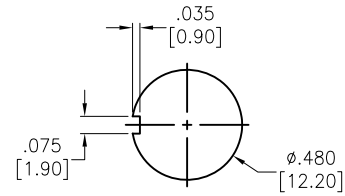
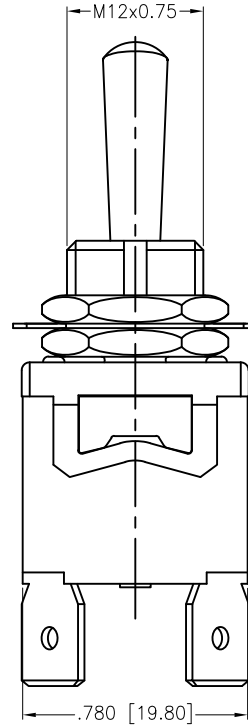
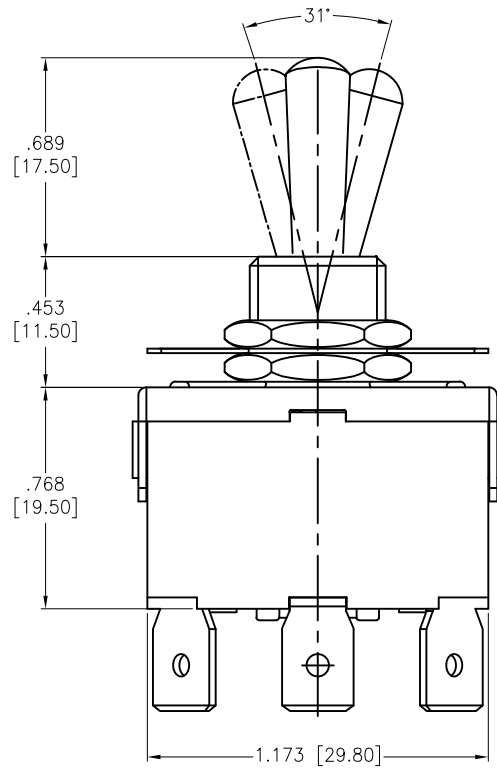


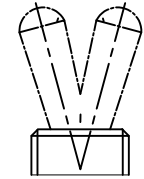
APPROVED: _____

DATE: _____ TITLE: _____

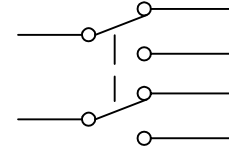
Rev	AWO #	Description	Date	Appr
-		RELEASED	8/10/21	
A		UPDATE SPEC.	10/20/21	WX/RC
B		UPDATED DRAWING	6/15/22	JJ/MC
C		UPDATED COLOR	6/15/22	JJ/MC



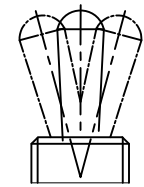
RECOMMENDED
PANEL CUT-OUT



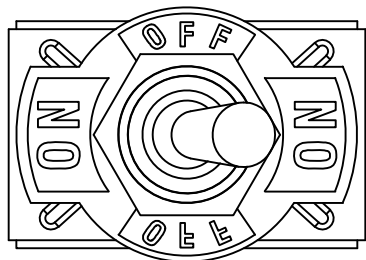
2 WAY



CIRCUIT DIAGRAM
(DPDT)



3 WAY



- SW-T1-4X-B-K2A
- B=ON-ON
 - D=ON-(ON)
 - E=ON-OFF-ON
 - F=ON-OFF-(ON)
 - G=(ON)-OFF-(ON)

SPECIFICATIONS:

Material:
Body: Bakelite, Color: Red Brown
Lever: Brass, Nickel plated
Terminal: Brass, Silver plated

Electrical:
Rating: 6A @ 250V AC
10A @ 125V AC

Contact resistance: 50 mΩ max
Insulation resistance: 1000 MΩ min @ 500 VDC
Dielectric withstanding voltage: 1500V AC for 1 minute
Electrical Life: 10,000 cycles

Temperature Rating:
Operating temperature: -25°C to +85°C

Environmental:
Lead free, RoHS compliant



UNLESS OTHERWISE SPECIFIED ALL DIMENSIONS ARE INCHES [MM]. TOLERANCES: EXCEPT AS NOTED		
INCHES		HOLES
.X ± .10		∅X ± .10
.XX ± .020		∅XX ± .015
.XXX ± .015		∅XXX ± .010

ADAM TECH 909 Rahway Avenue,
Union, NJ 07083
Phone: 908-687-5000
Fax: 908-687-5710

DRAWN	WX	8/10/21
CHECKED	RC	8/10/21
APPROVED		

TITLE	SWITCH, TOGGLE MEDIUM, DPDT, PC TERMINALS .250 [6.35mm]	
SIZE	PART NO.	REV.
X	SW-T1-4X-B-K2A	C

THIS DRAWING CONTAINS INFORMATION THAT IS PROPRIETARY AND SHOULD NOT BE USED WITHOUT PRIOR WRITTEN PERMISSION FROM ADAM TECH

REF:	S00206C	SCALE:	NTS	SHEET	1 OF 1
------	---------	--------	-----	-------	--------