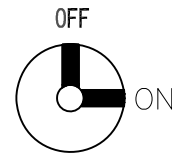
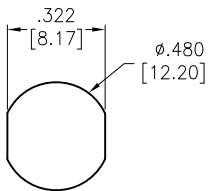
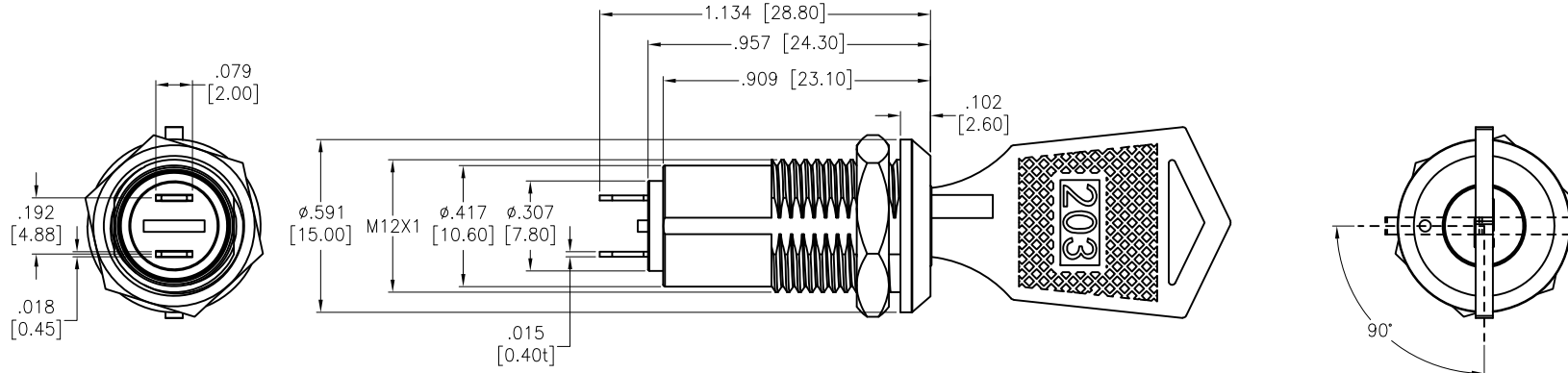


APPROVED: _____
 DATE: _____ TITLE: _____

Rev	AWO #	Description	Date	Appr
-		RELEASED	10/15/20	
A		UPDATE DRAWING	5/12/21	JJ/RC
B		UPDATE DIM.	6/9/21	JJ/RC
C		ADDED SPEC.	8/31/21	WX/RC
D		UPDATE SPEC.	5/27/22	WX/MC



FUNCTION
SPST, ON-OFF

ADAM-P/N	SPEC.
SW-R-K4-A	Key pulled on both positions. Note: this would be our standard
SW-R-K4-B	Key pulled on 1 position

SPECIFICATIONS:

Material:
 Body: Steel, Polished Chrome, Silver plated
 Electrical:
 The rated load: 250 VAC, 0.5A
 24 VDC, 0.5A
 Contact resistance: 35 mΩ max
 Insulation resistance: 1000 mΩ min (500VDC)
 Dielectric withstanding voltage: 1500 VAC for 1 minute
 Endurance: \geq 10000 Cycles
 Temperature Rating:
 Operating temperature: -25°C to +85°C
 Environmental:
 Lead free, RoHS compliant



UNLESS OTHERWISE SPECIFIED ALL DIMENSIONS ARE INCHES [MM]. TOLERANCES: EXCEPT AS NOTED

INCHES	HOLES
.x \pm .10	ϕ .x \pm .10
.xx \pm .020	ϕ .xx \pm .015
.xxx \pm .015	ϕ .xxx \pm .010

ADAM TECH 909 Rahway Avenue,
 Union, NJ 07083
 Phone: 908-687-5000
 Fax: 908-687-5710

DRAWN	OW	10/15/20
CHECKED	AC	10/15/20
APPROVED		

TITLE: SWITCH, KEY LOCK, 12MM, SPST, ON-OFF
 PANEL MOUNT, SOLDER TERMINAL

THIS DRAWING CONTAINS INFORMATION THAT IS PROPRIETARY AND SHOULD NOT BE USED WITHOUT PRIOR WRITTEN PERMISSION FROM ADAM TECH

SIZE X	PART NO. SW-R-K4-X	REV. D
-----------	-----------------------	-----------