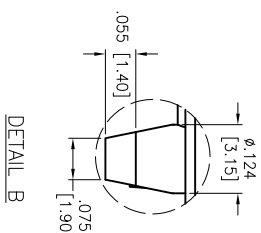
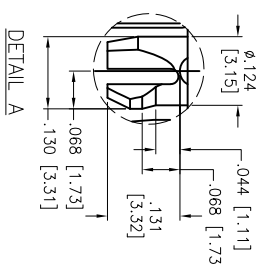
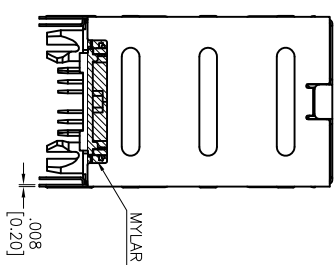
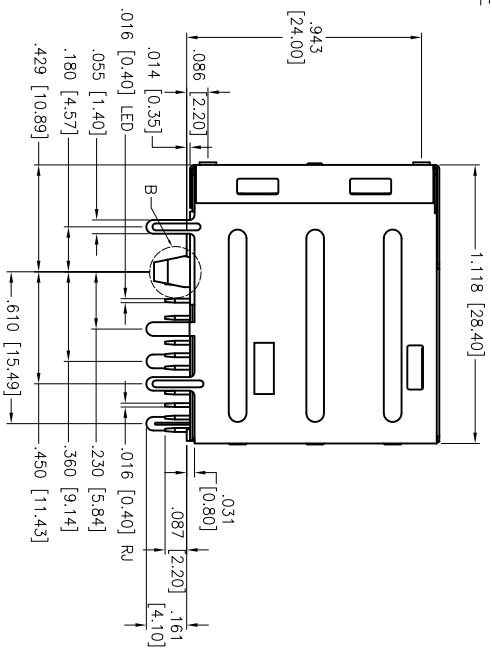
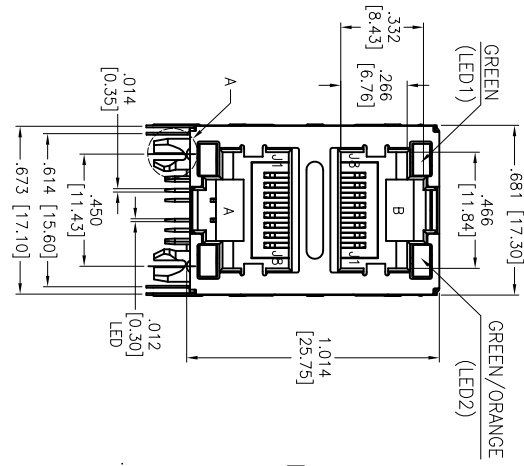
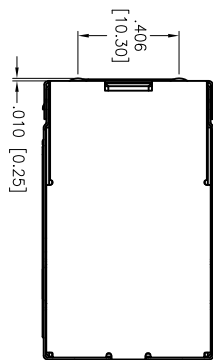


Rev	AWO #	Description	Date	Appr
-		RELEASED	7/2/15	

APPROVED: \_\_\_\_\_ TITLE: \_\_\_\_\_  
 DATE: \_\_\_\_\_



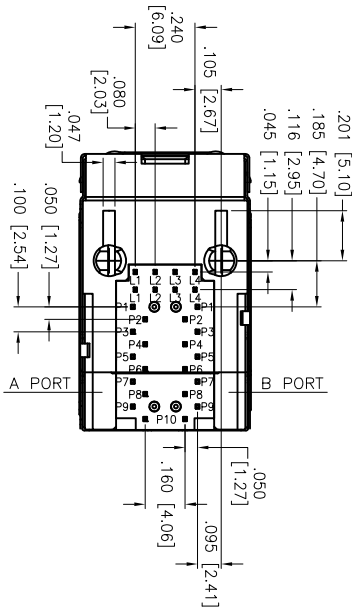
X	PLATING
0	15 μin Gold
1	30 μin Gold
2	50 μin Gold
6	6 μin Gold

**SPECIFICATIONS:**

Material: Insulator: Hi-temp thermoplastic, rated UL 94V-0  
 Insulator color: Black  
 Contacts: Copper Alloy  
 Shield: Stainless, Pre-soldering  
 Contact Plating:  
 Flat contact  
 Gold over Nickel underplate on contact area,  
 Tin over Copper underplate on solder tails  
 Round contact  
 Gold over Nickel underplate overall  
 (See chart for thickness)

**Electrical:**

Insulation resistance: 500 Mohms min  
 Dielectric withstanding voltage: 1,500 VAC or 2,250 VDC for 1 minute  
 Temperature Rating:  
 Operating temperature: 0°C to +70°C  
 Environmental:  
 Lead free, RoHS compliant.



UNLESS OTHERWISE SPECIFIED  
 ALL DIMENSIONS ARE INCHES [MM]  
 TOLERANCES: EXCEPT AS NOTED  
 INCHES HOLES  
 .X ± .10 Ø.X ± .10  
 .XX ± .020 Ø.XXX ± .015  
 .XXX ± .015 Ø.XXXX ± .010

**ADAM TECH**

909 Rahway Avenue, Union, NJ 07083  
 Phone: 908-687-5000 Fax: 908-687-5710

TITLE: MODULAR JACK GANGED, 2X1 PORT, 8P8C  
 W/LED1 GREEN, LED2 GREEN / ORANGE

APPROVALS	DATE	SIZE	PART NO.	REV.
DRAWN	HR	7/2/15		
CHECKED	NP	7/2/15		
APPROVED				

REF: 500701C SCALE: NTS SHEET 1 OF 2

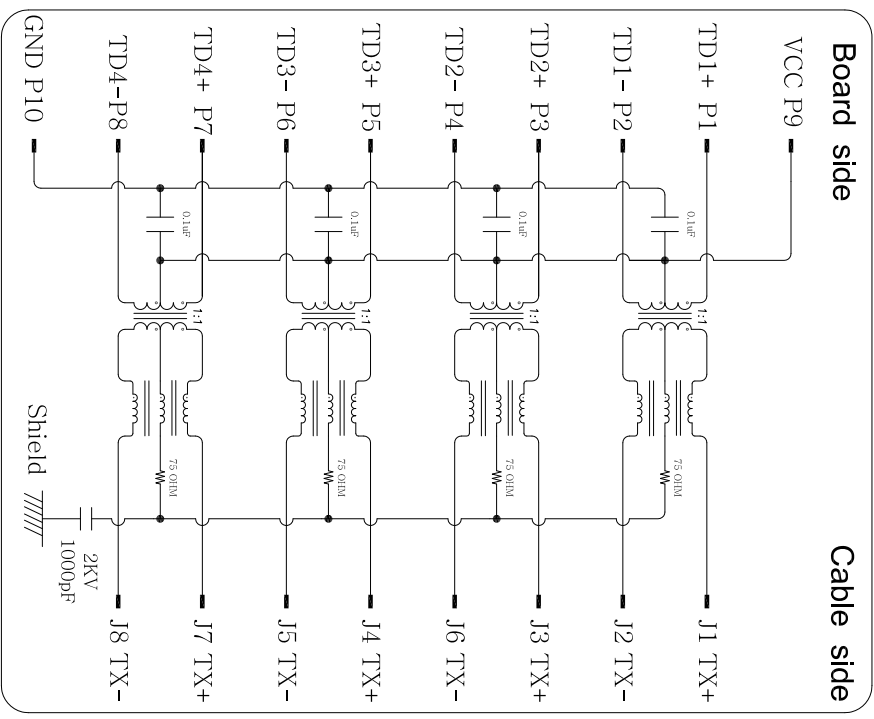


Rev	AWO #	Description	Date	Appr
		SEE SH1 1 OF 2 FOR REVISION		

APPROVED: \_\_\_\_\_

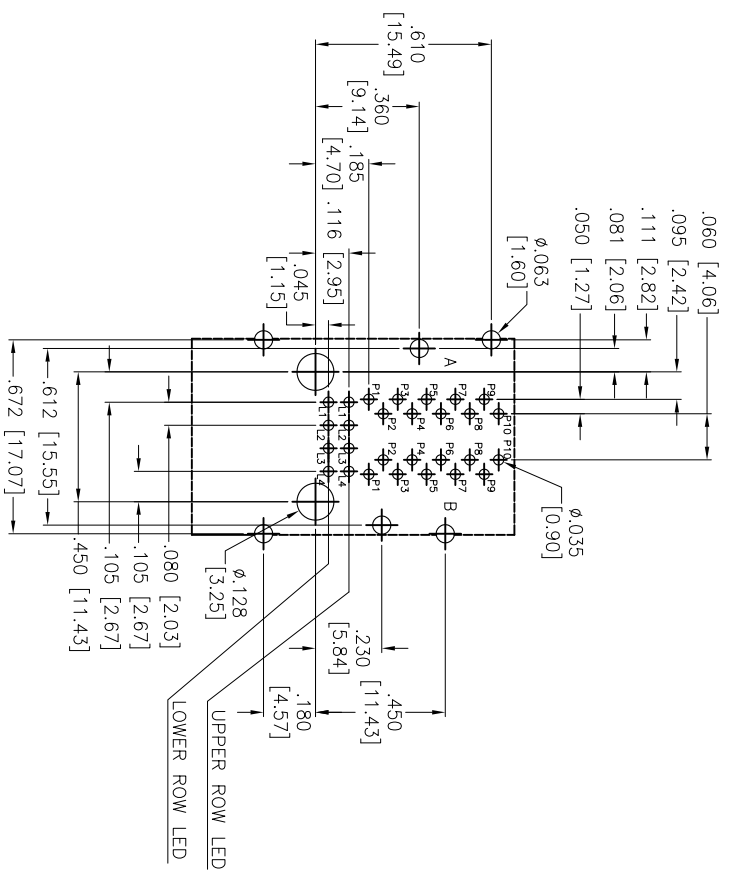
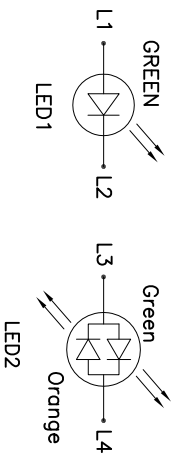
DATE: \_\_\_\_\_ TITLE: \_\_\_\_\_

D



**ELECTRICAL CHARACTERISTICS :**

1. INSERTION LOSS :  
- 1~100 MHz -1.0dB MAX.
2. RETURN LOSS(LOAD 100Ω) :  
- 1~30 MHz -18dB MIN  
- 30~60 MHz -16dB MIN  
- 60~80 MHz -12dB MIN  
- 80~100 MHz -10dB MIN
3. COMMON MODE REFLECTION  
- 1~100 MHz -30dB MIN
4. CROSS TALK  
- 1~100 MHz -30dB MIN
5. OCL @ 100KHz, 0.1V, 8mA DC BIAS  
- (P1-P2),(P3-P4),(P5-P6),(P7-P8) : 350 uH MIN
6. DCR  
- (J1-J2),(J3-J6),(J4-J5),(J7-J8) : 1.2Ω MAX
7. HI-POT TEST  
- PCB SIDE TO CABLE SIDE : 1500VAC 60S OR 2250VDC 60S
8. TURNS RATION 100KHz  
- (P1-P2) : (J1-J2) = 1:1 ±%5  
- (P3-P4) : (J3-J6) = 1:1 ±%5  
- (P5-P6) : (J4-J5) = 1:1 ±%5  
- (P7-P8) : (J7-J8) = 1:1 ±%5



RECOMMENDED PCB LAYOUT

A

UNLESS OTHERWISE SPECIFIED  
ALL DIMENSIONS ARE INCHES [MM]  
TOLERANCES: EXCEPT AS NOTED  
INCHES HOLES

.X	± .10	Ø.X	± .10
.XX	± .020	Ø.XX	± .015
.XXX	± .015	Ø.XXX	± .010

APPROVALS

DRAWN	HR	DATE
CHECKED	NP	7/2/15
APPROVED		

**ADAM TECH**  
909 Rahway Avenue, Union, NJ 07083  
Phone: 908-687-5000 Fax: 908-687-5710

TITLE: MODULAR JACK GANGED, 2X1 PORT, 8P8C  
W/LED1 GREEN, LED2 GREEN / ORANGE

SIZE	PART NO.	REV.
X	MTJG-2-88JX1-V-FSG-136-M268Y	-
REF:	S00701C	SCALE: NTS
		SHEET 2 OF 2