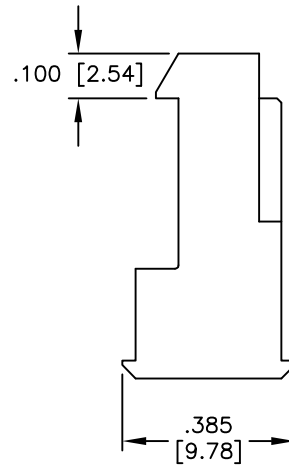
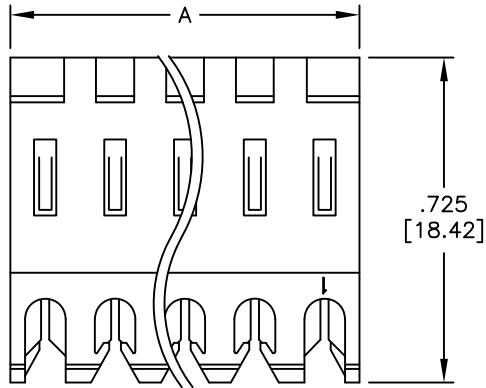
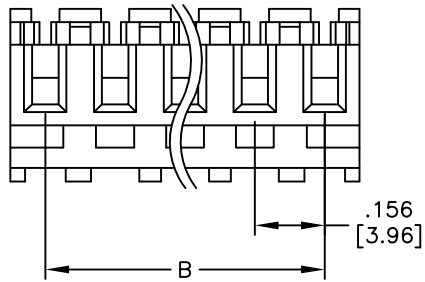


APPROVED: _____
 DATE: _____ TITLE: _____

Rev	AWO #	Description	Date	Appr
-		RELEASED	2/21/06	
A		REDRAWN	1/19/10	
B		ADDED MAX WIRE INSULATION O.D.	10/1/19	



.090" [2.28mm] MAX OUTER INSULATION DIA.

PART NUMBER	WIRE SIZE	COLOR
MTD-B-XX-A-1	18 AWG	ORANGE
MTD-B-XX-B-1	20 AWG	YELLOW
MTD-B-XX-C-1	22 AWG	RED
MTD-B-XX-D-1	24 AWG	WHITE
MTD-B-XX-E-1	26 AWG	BLUE

SPECIFICATIONS:

Material:
 Insulator: Nylon 66, rated UL 94V-2

Insulator color: (See chart)

Contacts: Phosphor Bronze

Plating:

Tin over Copper underplate overall

Electrical:

Operating voltage: 250 VAC max.

Current rating: 7 Amps max.

Contact resistance: 10 mohms max. initial

Insulation resistance: 1,000 Mohms min.

Dielectric withstanding voltage: 1,500 VAC for 1 minute

Temperature Rating:

Operating temperature: -40°C to +105°C

Environmental:

Lead free, RoHS compliant



Positions: 2 thru 18

A = .156 [3.96] x No. of Positions

B = .156 [3.96] x No. of Spaces

UNLESS OTHERWISE SPECIFIED
 ALL DIMENSIONS ARE INCHES [MM]
 TOLERANCES: EXCEPT AS NOTED

INCHES		HOLES	
.X	± .10	Ø.X	± .10
.XX	± .020	Ø.XX	± .015
.XXX	± .015	Ø.XXX	± .010

APPROVALS		DATE
DRAWN	SS	2/21/06
CHECKED		
APPROVED		

ADAM TECH

909 Rahway Avenue, Union, NJ 07083
 Phone: 908-687-5000 Fax: 908-687-5710

TITLE
 IDC MASS TERMINATION HOUSING, .156" [3.96]
 SPACING, OPEN END FEED THROUGH

SIZE	PART NO.	REV.
X	MTD-B-XX-X-1	B

REF: S00004T SCALE: NTS SHEET 1 OF 1