

6

5

4

3

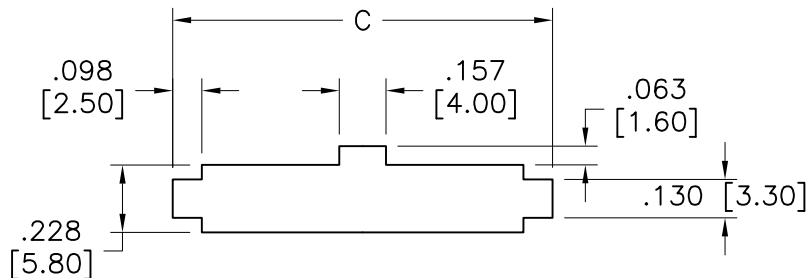
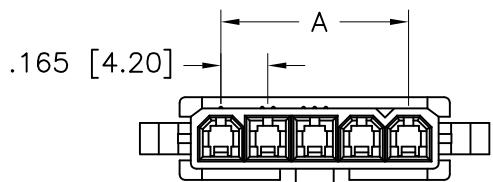
2

1

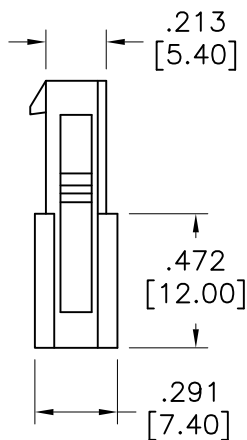
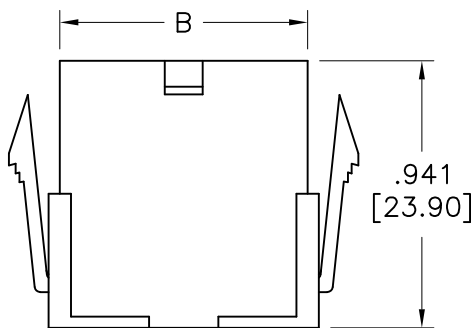
APPROVED: _____

DATE: _____ TITLE: _____

Rev	AWO #	Description	Date	Appr
-		RELEASED	9/25/08	



RECOMMENDED PANEL CUT



Wire Size AWG	Positions			
	2,3	4~6	7~10	11,12
#16	9A	8A	7A	6A
#18	9A	8A	7A	6A
#20	7A	6A	5A	5A
#22	5A	4A	4A	4A
#24	4A	3A	3A	3A
#26	3A	2A	2A	2A
#28	2A	1A	1A	1A

SPECIFICATIONS:

Material:

Insulator: Nylon 66, rated UL 94V-2

Insulator color: Natural

Electrical:

Voltage rating: 600 V (R.M.S)

Current rating: See chart

Insulation resistance: 1000 Mohms min @ 500 VDC

Dielectric withstanding voltage: 1500 VAC for 1 minute

Mechanical:

Wire size: 16 Awg thru 28 Awg

Temperature Rating:

Operating temperature: -40°C to 105°C

Environmental:

Lead free, RoHS compliant.



Positions: 02 thru 12

A = .165 [4.20] x No. of Space

B = .165 [4.20] x No. of Positions + .047 [1.20]

C = .165 [4.20] x No. of Positions + .260 [6.60]

UNLESS OTHERWISE SPECIFIED
ALL DIMENSIONS ARE MM [INCHES]
TOLERANCES: EXCEPT AS NOTED

INCHES		HOLES	
.X ± .10	∅.X ± .10		
.XX ± .020	∅.XX ± .015		
.XXX ± .015	∅.XXX ± .010		

ADAM TECH

909 Rahway Avenue, Union, NJ 07083
Phone: 908-687-5000 Fax: 908-687-5710

APPROVALS		DATE
DRAWN	DY	9/25/08
CHECKED		
APPROVED		

TITLE		
PLUG HOUSING, SINGLE ROW, .165 [4.20] PITCH		
SIZE	PART NO.	REV.
X	DMF-XX-W-S	-
REF:	SCALE: NTS	SHEET 1 OF 1

6

5

4

3

2

1