

17371.5

RK 35/35 N/IS BU

RK 35/35 N/IS BU



Feed-through terminal, Screw connection, Mounting type: Mounting rail TS 35/7.5, Rated cross-section: 35 mm², Width: 16 mm, Colour: Blue

Business data

Product description	Feed-through terminal
Packaging unit	20
Quantity unit	PC
Weight per piece (not including packaging)	59.8
Weight per piece (including packaging)	62.9
Unit of weight	G
Customs number	85369010
Country of origin	DE

17371.5

RK 35/35 N/IS BU

RK 35/35 N/IS BU

Technical Data

Dimensions

Length	58 mm
Width	16 mm
Height TS 35/7.5	52 mm

Ratings

Rated voltage	800 V
Rated current	125 A
Rated cross-section	35 mm ²
Rated impulse voltage	8 kV
Overvoltage category	III
Contamination degree	3

17371.5

RK 35/35 N/IS BU

RK 35/35 N/IS BU

Technical Data

Connection data

Connection principle	Screw connection
Connection position	Lateral
Connections	2
Number of terminals per level	2
Number of levels	1
Wire cross-section single-core (rigid) / stranded, min.	2.5 mm ²
Wire cross-section single core (rigid)/stranded, max.	50 mm ²
Wire cross-section stranded, min.	2.5 mm ²
Wire cross-section stranded, max.	35 mm ²
Wire cross-section stranded with wire-end ferrules, min.	2.5 mm ²
Wire cross-section stranded with wire-end ferrules, max.	35 mm ²
Wire cross-section AWG, min.	12
Wire cross-section AWG, max.	2
Stripping length	20 mm
Screw head	Inner hex (Allen)
Screw threading	M 6
Tightening torque, min.	2.5 Nm
Tightening torque, max.	5 Nm

17371.5

RK 35/35 N/IS BU

RK 35/35 N/IS BU

Technical Data

Materials

Insulation housing	Polyamide 6.6
--------------------	---------------

Flammability class UL 94	V-2
--------------------------	-----

Working temperature, min.	-40 °C
---------------------------	--------

Working temperature, max.	105 °C
---------------------------	--------

Further technical data

Mounting type	Mounting rail TS 35/7,5
---------------	-------------------------

Gauge plug acc. to EN 60 947-1	B9
--------------------------------	----

Number of cross-connection channels	1
-------------------------------------	---

17371.5

RK 35/35 N/IS BU

RK 35/35 N/IS BU

Approvals

Standards and regulations

EAC approval	TR ZU 004/2011
--------------	----------------

EAC approval granted	✓
----------------------	---

CSA approval

CSA approval	C22.2 No 158
--------------	--------------

CSA approval granted	✓
----------------------	---

CSA Usegroup C: rated voltage	600 V
-------------------------------	-------

CSA Usegroup C: rated current	115 A
-------------------------------	-------

CSA wire cross-section AWG, min.	12
----------------------------------	----

CSA wire cross-section AWG, max.	2
----------------------------------	---

CSA stripping length	20 mm
----------------------	-------

CSAus approval

CSAus approval	UL 1059
----------------	---------

CSAus approval granted	✓
------------------------	---

CSAus Usegroup C: rated voltage	600 V
---------------------------------	-------

CSAus Usegroup C: rated current	115 A
---------------------------------	-------

CSAus wire cross-section AWG, min.	12
------------------------------------	----

17371.5

RK 35/35 N/IS BU

RK 35/35 N/IS BU

Approvals

CSAus approval

CSAus wire cross-section AWG, max.	2
CSAus stripping length	20 mm

cUL Recognized

cUL Recognized	C22.2 No 158
cUL Recognized	✓
cUL Usegroup C: rated voltage	600 V
cUL Usegroup C: rated current	115 A
cUL wire cross-section single-core (rigid) AWG, min.	12
cUL wire cross-section single-core (rigid) AWG, max.	2
cUL wire cross-section stranded AWG, min.	12
cUL wire cross-section stranded AWG, max.	2
cUL torque	40 Nm
cUL wire material	Cu

17371.5

RK 35/35 N/IS BU

RK 35/35 N/IS BU

Approvals

German Lloyd approval

GL approval	IEC 60947-7-1
GL approval granted	✓
GL rated voltage	800 V
GL rated current	125 A
GL rated cross-section	35 mm ²
GL environmental category	C

KEMA KEUR approval

KEMA KEUR approval	EN 60947-7-1
KEMA KEUR approval granted	✓
KEMA rated voltage	1000 V
KEMA rated current	125 A
KEMA rated impulse voltage	8 kV
KEMA wire cross-section single core (rigid), min.	2.5 mm ²
KEMA wire cross-section single-core (rigid), max.	50 mm ²
KEMA wire cross-section stranded, min.	2.5 mm ²
KEMA wire cross-section stranded, max.	35 mm ²

17371.5

RK 35/35 N/IS BU

RK 35/35 N/IS BU

Approvals

UL Recognized

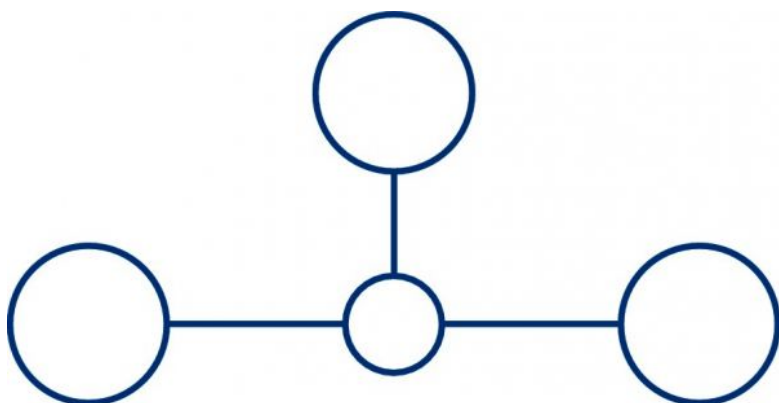
UL Recognized	UL 1059
UL Recognized granted	✓
UL Usegroup C: rated voltage	600 V
UL Usegroup C: rated current	115 A
UL wire cross-section single-core (rigid) AWG, min.	12
UL wire cross-section single-core (rigid) AWG, max.	2
UL wire cross-section stranded AWG, min.	12
UL wire cross-section stranded AWG, max.	2
UL torque	40 Lb In
UL wire material	Cu
UL factory wiring	✓
UL field wiring	✓

17371.5

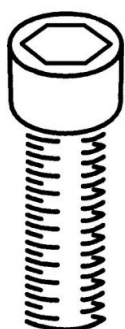
RK 35/35 N/IS BU

RK 35/35 N/IS BU

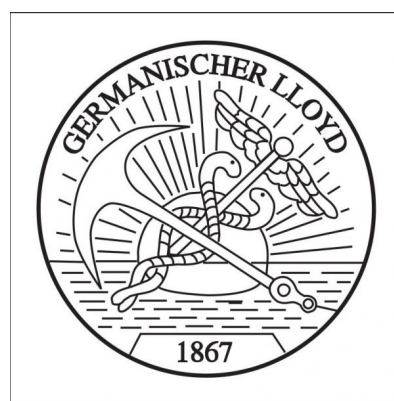
Media



M6



EAC



17371.5

RK 35/35 N/IS BU

RK 35/35 N/IS BU

Media



17371.5

RK 35/35 N/IS BU

RK 35/35 N/IS BU

Accessories

Cover



Cover, Length: 37.3 mm, Width: 16 mm, Colour: Yellow

In general

Order number	Article designation	GTIN (EAN)	Packaging unit
2956.0	AD 1/16/N/B	4044211056841	20 PC



Cover, Length: 37.3 mm, Width: 16 mm, Colour: White

In general

Order number	Article designation	GTIN (EAN)	Packaging unit
2968.0	AD 1/16/N	4044211056971	20 PC

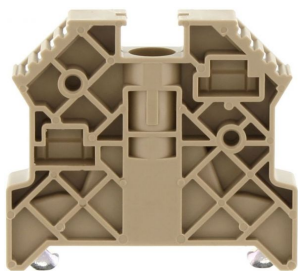
17371.5

RK 35/35 N/IS BU

RK 35/35 N/IS BU

Accessories

End bracket



End stop, Mounting type: Mounting rail TS 35/7.5,
Width: 9.5 mm, Colour: Beige

In general

Order number	Article designation	GTIN (EAN)	Packaging unit
2828.0	ES 35/K/ST	4044211055547	50 PC

Cross connector



Cross-connector, No. of poles: 10, Mounting type: Can
be screwed on, Width: 153 mm, Rated cross-section:
35 mm², Colour: natural

In general

Order number	Article designation	GTIN (EAN)	Packaging unit
17289.0	Q 10	4044211180355	10 PC

17371.5

RK 35/35 N/IS BU

RK 35/35 N/IS BU

Accessories

Cross connector



Cross-connector, No. of poles: 2, Mounting type: Can be screwed on, Width: 25 mm, Rated cross-section: 35 mm², Colour: natural

In general

Order number	Article designation	GTIN (EAN)	Packaging unit
17253.0	Q 2	4044211186531	20 PC



Cross-connector, No. of poles: 3, Mounting type: Can be screwed on, Width: 41 mm, Rated cross-section: 35 mm², Colour: natural

In general

Order number	Article designation	GTIN (EAN)	Packaging unit
17287.0	Q 3	4044211180331	20 PC

17371.5

RK 35/35 N/IS BU

RK 35/35 N/IS BU

Accessories

Cross connector

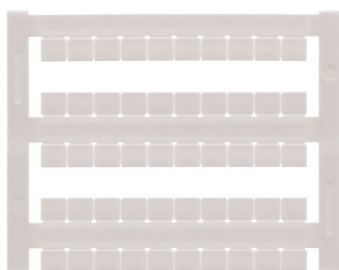


Cross-connector, No. of poles: 4, Mounting type: Can be screwed on, Width: 57 mm, Rated cross-section: 35 mm², Colour: natural

In general

Order number	Article designation	GTIN (EAN)	Packaging unit
17288.0	Q 4	4044211180348	10 PC

Quick-marking



Terminal marker / Pocket Maxicard, Length: 5 mm, Width: 6 mm, Colour: White

In general

Order number	Article designation	GTIN (EAN)	Packaging unit
4702.7	PMC SB 6/50 WH	4044211089986	500 PC
