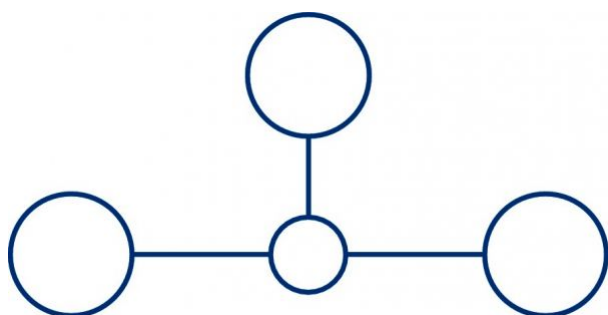


17371.3

RK 35/35 N/IS OG

RK 35/35 N/IS OG



Feed-through terminal, Screw connection, Mounting type: Mounting rail TS 35/7.5, Rated cross-section: 35 mm², Width: 16 mm, Colour: Orange

Business data

| | |
|--|-----------------------|
| Product description | Feed-through terminal |
| Packaging unit | 20 |
| Quantity unit | PC |
| Weight per piece (not including packaging) | 59.8 |
| Weight per piece (including packaging) | 62.9 |
| Unit of weight | G |
| Customs number | 85369010 |
| Country of origin | DE |

17371.3

RK 35/35 N/IS OG

RK 35/35 N/IS OG

Technical Data

Dimensions

| | |
|------------------|-------|
| Length | 58 mm |
| Width | 16 mm |
| Height TS 35/7.5 | 52 mm |

Ratings

| | |
|-----------------------|--------------------|
| Rated voltage | 800 V |
| Rated current | 125 A |
| Rated cross-section | 35 mm ² |
| Rated impulse voltage | 8 kV |
| Overvoltage category | III |
| Contamination degree | 3 |

17371.3

RK 35/35 N/IS OG

RK 35/35 N/IS OG

Technical Data

Connection data

| | |
|--|---------------------|
| Connection principle | Screw connection |
| Connection position | Lateral |
| Connections | 2 |
| Number of terminals per level | 2 |
| Number of levels | 1 |
| Wire cross-section single-core (rigid) / stranded, min. | 2.5 mm ² |
| Wire cross-section single core (rigid)/stranded, max. | 50 mm ² |
| Wire cross-section stranded, min. | 2.5 mm ² |
| Wire cross-section stranded, max. | 35 mm ² |
| Wire cross-section stranded with wire-end ferrules, min. | 2.5 mm ² |
| Wire cross-section stranded with wire-end ferrules, max. | 35 mm ² |
| Wire cross-section AWG, min. | 12 |
| Wire cross-section AWG, max. | 2 |
| Stripping length | 20 mm |
| Screw head | Inner hex (Allen) |
| Screw threading | M 6 |
| Tightening torque, min. | 2.5 Nm |
| Tightening torque, max. | 5 Nm |

17371.3

RK 35/35 N/IS OG

RK 35/35 N/IS OG

Technical Data

Materials

| | |
|--------------------|---------------|
| Insulation housing | Polyamide 6.6 |
|--------------------|---------------|

| | |
|--------------------------|-----|
| Flammability class UL 94 | V-2 |
|--------------------------|-----|

| | |
|---------------------------|--------|
| Working temperature, min. | -40 °C |
|---------------------------|--------|

| | |
|---------------------------|--------|
| Working temperature, max. | 105 °C |
|---------------------------|--------|

Further technical data

| | |
|---------------|-------------------------|
| Mounting type | Mounting rail TS 35/7,5 |
|---------------|-------------------------|

| | |
|--------------------------------|----|
| Gauge plug acc. to EN 60 947-1 | B9 |
|--------------------------------|----|

| | |
|-------------------------------------|---|
| Number of cross-connection channels | 1 |
|-------------------------------------|---|

17371.3

RK 35/35 N/IS OG

RK 35/35 N/IS OG

Approvals

Standards and regulations

| | |
|--------------|----------------|
| EAC approval | TR ZU 004/2011 |
|--------------|----------------|

| | |
|----------------------|---|
| EAC approval granted | ✓ |
|----------------------|---|

CSA approval

| | |
|--------------|--------------|
| CSA approval | C22.2 No 158 |
|--------------|--------------|

| | |
|----------------------|---|
| CSA approval granted | ✓ |
|----------------------|---|

| | |
|-------------------------------|-------|
| CSA Usegroup C: rated voltage | 600 V |
|-------------------------------|-------|

| | |
|-------------------------------|-------|
| CSA Usegroup C: rated current | 115 A |
|-------------------------------|-------|

| | |
|----------------------------------|----|
| CSA wire cross-section AWG, min. | 12 |
|----------------------------------|----|

| | |
|----------------------------------|---|
| CSA wire cross-section AWG, max. | 2 |
|----------------------------------|---|

| | |
|----------------------|-------|
| CSA stripping length | 20 mm |
|----------------------|-------|

CSAus approval

| | |
|----------------|---------|
| CSAus approval | UL 1059 |
|----------------|---------|

| | |
|------------------------|---|
| CSAus approval granted | ✓ |
|------------------------|---|

| | |
|---------------------------------|-------|
| CSAus Usegroup C: rated voltage | 600 V |
|---------------------------------|-------|

| | |
|---------------------------------|-------|
| CSAus Usegroup C: rated current | 115 A |
|---------------------------------|-------|

| | |
|------------------------------------|----|
| CSAus wire cross-section AWG, min. | 12 |
|------------------------------------|----|

17371.3

RK 35/35 N/IS OG

RK 35/35 N/IS OG

Approvals

CSAus approval

| | |
|------------------------------------|-------|
| CSAus wire cross-section AWG, max. | 2 |
| CSAus stripping length | 20 mm |

cUL Recognized

| | |
|--|--------------|
| cUL Recognized | C22.2 No 158 |
| cUL Recognized | ✓ |
| cUL Usegroup C: rated voltage | 600 V |
| cUL Usegroup C: rated current | 115 A |
| cUL wire cross-section single-core (rigid) AWG, min. | 12 |
| cUL wire cross-section single-core (rigid) AWG, max. | 2 |
| cUL wire cross-section stranded AWG, min. | 12 |
| cUL wire cross-section stranded AWG, max. | 2 |
| cUL torque | 40 Nm |
| cUL wire material | Cu |

17371.3

RK 35/35 N/IS OG

RK 35/35 N/IS OG

Approvals

German Lloyd approval

| | |
|---------------------------|--------------------|
| GL approval | IEC 60947-7-1 |
| GL approval granted | ✓ |
| GL rated voltage | 800 V |
| GL rated current | 125 A |
| GL rated cross-section | 35 mm ² |
| GL environmental category | C |

KEMA KEUR approval

| | |
|---|---------------------|
| KEMA KEUR approval | EN 60947-7-1 |
| KEMA KEUR approval granted | ✓ |
| KEMA rated voltage | 1000 V |
| KEMA rated current | 125 A |
| KEMA rated impulse voltage | 8 kV |
| KEMA wire cross-section single core (rigid), min. | 2.5 mm ² |
| KEMA wire cross-section single-core (rigid), max. | 50 mm ² |
| KEMA wire cross-section stranded, min. | 2.5 mm ² |
| KEMA wire cross-section stranded, max. | 35 mm ² |

17371.3

RK 35/35 N/IS OG

RK 35/35 N/IS OG

Approvals

UL Recognized

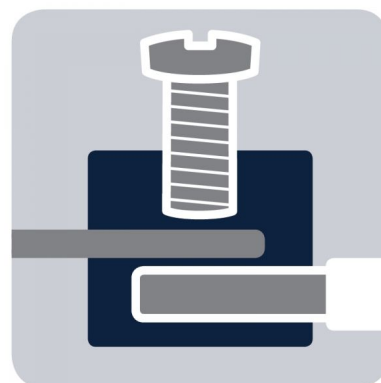
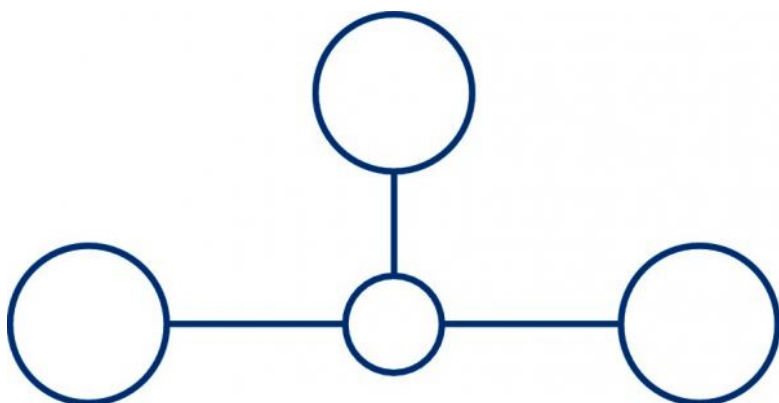
| | |
|---|----------|
| UL Recognized | UL 1059 |
| UL Recognized granted | ✓ |
| UL Usegroup C: rated voltage | 600 V |
| UL Usegroup C: rated current | 115 A |
| UL wire cross-section single-core (rigid) AWG, min. | 12 |
| UL wire cross-section single-core (rigid) AWG, max. | 2 |
| UL wire cross-section stranded AWG, min. | 12 |
| UL wire cross-section stranded AWG, max. | 2 |
| UL torque | 40 Lb In |
| UL wire material | Cu |
| UL factory wiring | ✓ |
| UL field wiring | ✓ |

17371.3

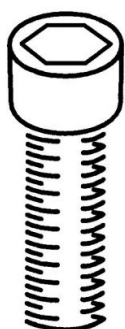
RK 35/35 N/IS OG

RK 35/35 N/IS OG

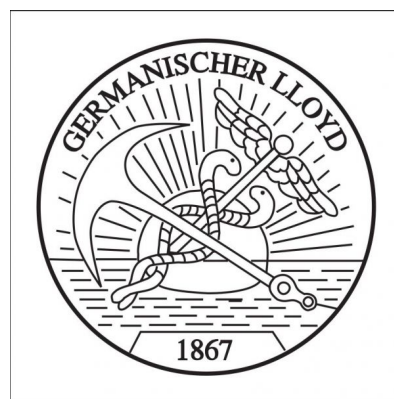
Media



M6



EAC



17371.3

RK 35/35 N/IS OG

RK 35/35 N/IS OG

Media



17371.3

RK 35/35 N/IS OG

RK 35/35 N/IS OG

Accessories

Cover



Cover, Length: 37.3 mm, Width: 16 mm, Colour: Yellow

In general

| Order number | Article designation | GTIN (EAN) | Packaging unit |
|--------------|---------------------|---------------|----------------|
| 2956.0 | AD 1/16/N/B | 4044211056841 | 20 PC |



Cover, Length: 37.3 mm, Width: 16 mm, Colour: White

In general

| Order number | Article designation | GTIN (EAN) | Packaging unit |
|--------------|---------------------|---------------|----------------|
| 2968.0 | AD 1/16/N | 4044211056971 | 20 PC |

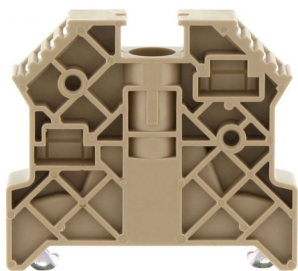
17371.3

RK 35/35 N/IS OG

RK 35/35 N/IS OG

Accessories

End bracket



End stop, Mounting type: Mounting rail TS 35/7.5,
Width: 9.5 mm, Colour: Beige

In general

| Order number | Article designation | GTIN (EAN) | Packaging unit |
|--------------|---------------------|---------------|----------------|
| 2828.0 | ES 35/K/ST | 4044211055547 | 50 PC |

Cross connector



Cross-connector, No. of poles: 10, Mounting type: Can
be screwed on, Width: 153 mm, Rated cross-section:
35 mm², Colour: natural

In general

| Order number | Article designation | GTIN (EAN) | Packaging unit |
|--------------|---------------------|---------------|----------------|
| 17289.0 | Q 10 | 4044211180355 | 10 PC |

17371.3

RK 35/35 N/IS OG

RK 35/35 N/IS OG

Accessories

Cross connector



Cross-connector, No. of poles: 2, Mounting type: Can be screwed on, Width: 25 mm, Rated cross-section: 35 mm², Colour: natural

In general

| Order number | Article designation | GTIN (EAN) | Packaging unit |
|--------------|---------------------|---------------|----------------|
| 17253.0 | Q 2 | 4044211186531 | 20 PC |



Cross-connector, No. of poles: 3, Mounting type: Can be screwed on, Width: 41 mm, Rated cross-section: 35 mm², Colour: natural

In general

| Order number | Article designation | GTIN (EAN) | Packaging unit |
|--------------|---------------------|---------------|----------------|
| 17287.0 | Q 3 | 4044211180331 | 20 PC |

17371.3

RK 35/35 N/IS OG

RK 35/35 N/IS OG

Accessories

Cross connector

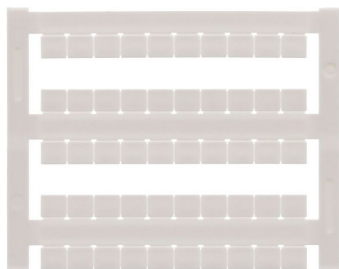


Cross-connector, No. of poles: 4, Mounting type: Can be screwed on, Width: 57 mm, Rated cross-section: 35 mm², Colour: natural

In general

| Order number | Article designation | GTIN (EAN) | Packaging unit |
|--------------|---------------------|---------------|----------------|
| 17288.0 | Q 4 | 4044211180348 | 10 PC |

Quick-marking



Terminal marker / Pocket Maxicard, Length: 5 mm, Width: 6 mm, Colour: White

In general

| Order number | Article designation | GTIN (EAN) | Packaging unit |
|--------------|---------------------|---------------|----------------|
| 4702.7 | PMC SB 6/50 WH | 4044211089986 | 500 PC |
