

Feed-through terminal, Screw connection, Mounting type: Mounting rail TS 35/7.5, Rated cross-section: 50 mm<sup>2</sup>, Width: 18.5 mm, Colour: Blue

**RAL:** Ähnlich 5005

### Business data

Article number	17156.5
Article name	SRK 50/2A BU
GTIN (EAN)	4044211189365
Packaging unit	10
Quantity unit	PC
Weight per piece (not including packaging)	101 g
Weight per piece (including packaging)	111 g
Unit of weight	G
Customs number	85369010
Country of origin	CZ
Prio-Article	17156.2
Product description	Feed-through terminal

---

### Technical data

---

#### Dimensions

Length	72.5 mm
Width	18.5 mm
Height TS 35/7.5	74 mm

#### Ratings

Rated voltage	1000 V
Rated current	150 A
Current load, max.	192 A
Rated cross-section	50 mm <sup>2</sup>
Rated impulse voltage	8 kV
Overvoltage category	III
Contamination degree	3
Maximum power dissipation for nominal condition	4.8 W

### Technical data

#### Connection data

Connection principle	Screw connection
Connection position	Lateral
Connections	2
Number of terminals per level	2
Number of levels	1
Wire cross-section single-core (rigid) / stranded, min.	10 mm <sup>2</sup>
Wire cross-section single core (rigid)/stranded, max.	70 mm <sup>2</sup>
Wire cross-section stranded, min.	10 mm <sup>2</sup>
Wire cross-section stranded, max.	50 mm <sup>2</sup>
Wire cross-section stranded with wire-end ferrules,min.	10 mm <sup>2</sup>
Wire cross-section stranded with wire-end ferrules,max.	50 mm <sup>2</sup>
Wire cross-section AWG, min.	8
Stripping length	24 mm
Screw head	Inner hex (Allen)
Screw threading	M 6
Tightening torque, min.	3.5 Nm
Tightening torque, max.	6 Nm
Wire cross-section single-core (rigid) / stranded, AWGmin.	8
Wire cross-section stranded, AWG min.	8
Wire cross-section stranded with wire-end ferrules,AWG max.	1
Wire cross-section stranded with wire-end ferrules, AWG min.	8

#### Materials

Insulation housing	Polyamide 6.6
Flammability class UL 94	V-0
Working temperature, min.	-40 °C
Working temperature, max.	120 °C

#### Further technical data

Mounting type	Mounting rail TS 35/7,5
Gauge plug acc. to EN 60 947-1	B10
Number of cross-connection channels	1
Number of test pick-off options	1

---

### Technical data

---

#### Environmental Product Compliance

---

REACH Conform	yes
REACH Reference date	2022-06-10
REACH Candidate Substance Note	No
RoHS Conform	yes

---

### Approvals

#### Standards and regulations

EAC approval	TR ZU 004/2011
--------------	----------------

EAC approval granted	yes
----------------------	-----

#### cUL Recognized

cUL approval	C22.2 No 158
--------------	--------------

cUL Usegroup B: rated voltage	600 V
-------------------------------	-------

cUL Usegroup B: rated current	150 A
-------------------------------	-------

cUL Usegroup C: rated voltage	600 V
-------------------------------	-------

cUL Usegroup D: rated voltage	600 V
-------------------------------	-------

cUL Usegroup D: rated current	150 A
-------------------------------	-------

cUL Usegroup E: rated voltage	1000 V
-------------------------------	--------

cUL Usegroup E: rated current	150 A
-------------------------------	-------

cUL wire cross-section single-core (rigid) AWG, min.	10
--	----

cUL wire cross-section single-core (rigid) AWG, max.	1/0
--	-----

cUL wire cross-section stranded AWG, min.	8
---	---

cUL wire cross-section stranded AWG, max.	1/0
---	-----

cUL torque, min.	3.5 Nm
------------------	--------

cUL torque, max.	6 Nm
------------------	------

cUL wire material	Cu
-------------------	----

cUL Recognized	1
----------------	---

#### KEMA KEUR approval

KEMA KEUR approval	EN 60947-7-1:2009
--------------------	-------------------

KEMA KEUR approval granted	yes
----------------------------	-----

KEMA rated voltage	1000 V
--------------------	--------

KEMA rated current	150 A
--------------------	-------

KEMA rated impulse voltage	8 kV
----------------------------	------

KEMA wire cross-section single core (rigid), min.	10 mm <sup>2</sup>
---	--------------------

KEMA wire cross-section single-core (rigid), max.	70 mm <sup>2</sup>
---	--------------------

KEMA wire cross-section stranded, min.	10 mm <sup>2</sup>
--	--------------------

KEMA wire cross-section stranded, max.	70 mm <sup>2</sup>
--	--------------------

KEMA torque, min.	3.5 Nm
-------------------	--------

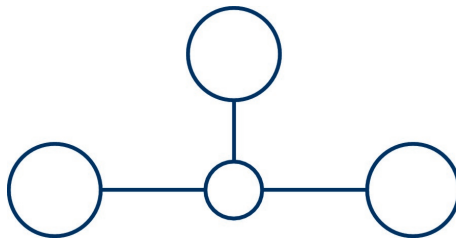
KEMA torque, max.	6 Nm
-------------------	------

### Approvals

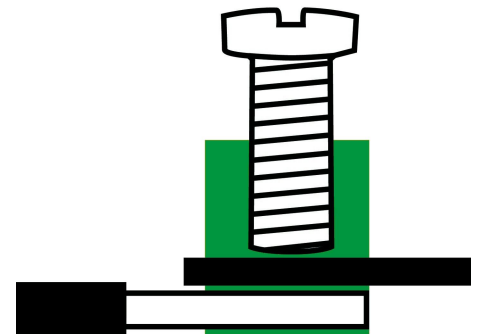
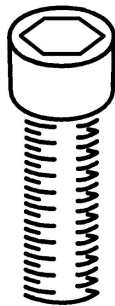
#### UL Recognized

UL approval	UL 1059
UL Usegroup B: rated voltage	600 V
UL Usegroup B: rated current	150 A
UL Usegroup C: rated voltage	600 V
UL Usegroup C: rated current	150 A
UL Usegroup D: rated voltage	600 V
UL Usegroup D: rated current	150 A
UL Usegroup E: rated voltage	1000 V
UL Usegroup E: rated current	150 A
UL wire cross-section single-core (rigid) AWG, min.	10
UL wire cross-section single-core (rigid) AWG, max.	1/0
UL wire cross-section stranded AWG, min.	10
UL wire cross-section stranded AWG, max.	1/0
UL torque, min.	30.9 Lb In.
UL torque, max.	53.1 Lb In.
UL wire material	Cu
UL factory wiring	1
UL field wiring	1
UL Recognized	1

### Media



**M6**



### Accessories

#### Cover

Cover, Length: 51.5 mm, Width: 18 mm, Colour: White



Article number	Article name	GTIN (EAN)	Packaging unit
<u>17284.7</u>	SAD 1/18/B WH	4044211205539	10 ST

Cover, Length: 51.5 mm, Width: 18 mm, Colour: Yellow



Article number	Article name	GTIN (EAN)	Packaging unit
<u>17283.8</u>	SAD 1/18/B YE	4044211205522	10 ST

#### Measurement pick-off terminal

Measurement pick-off terminal, Screw connection, Mounting type: On base, Rated cross-section: 10 mm<sup>2</sup>, Width: 10 mm, Colour: Beige



Article number	Article name	GTIN (EAN)	Packaging unit
<u>1121.2</u>	MAG 50 BG	4044211080914	10 ST

#### Inlay profile

Inlay plate, Colour: natural



Article number	Article name	GTIN (EAN)	Packaging unit
<u>2274.0</u>	EP 50	4044211050818	10 ST

#### Allen key socket wrench

Inner hex key with bare blade



Article number	Article name	GTIN (EAN)	Packaging unit
<u>2818.0</u>	ISKS 5	4044211055448	1 ST

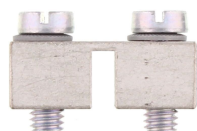
#### Cross-connector





Cross-connector, No. of poles: 4, Mounting type: Can be screwed on, Width: 67.8 mm, Rated cross-section: 50 mm<sup>2</sup>, Colour: natural

Article number	Article name	GTIN (EAN)	Packaging unit
<u>17257.0</u>	SQ 50/4	4044211186838	10 ST



Cross-connector, No. of poles: 2, Mounting type: Can be screwed on, Width: 30.6 mm, Rated cross-section: 50 mm<sup>2</sup>, Colour: natural

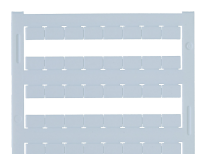
Article number	Article name	GTIN (EAN)	Packaging unit
<u>17255.0</u>	SQ 50/2	4044211186814	10 ST



Cross-connector, No. of poles: 3, Mounting type: Can be screwed on, Width: 49.2 mm, Rated cross-section: 50 mm<sup>2</sup>, Colour: natural

Article number	Article name	GTIN (EAN)	Packaging unit
<u>17256.0</u>	SQ 50/3	4044211186821	10 ST

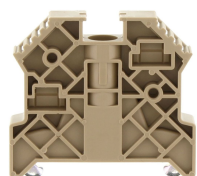
### Quick marking



Terminal marker / Pocket Maxicard, Length: 5 mm, Width: 8 mm, Colour: White

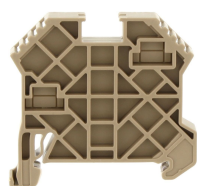
Article number	Article name	GTIN (EAN)	Packaging unit
<u>9323.7</u>	PMC SB 8/40 WH	4044211129231	400 ST

### End stop



End stop, Mounting type: Mounting rail TS 35/7.5, Width: 9.5 mm, Colour: Beige

Article number	Article name	GTIN (EAN)	Packaging unit
<u>2828.0</u>	ES 35/K/ST BG	4044211055547	50



End stop, Mounting type: Mounting rail TS 35/7.5 and TS 35/15, Width: 8 mm, Colour: Beige

Article number	Article name	GTIN (EAN)	Packaging unit
<u>17250.2</u>	SES 35 BG	4044211178253	50