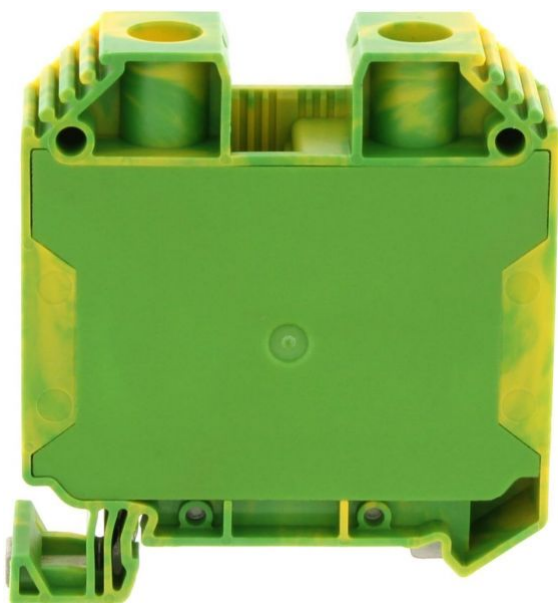


17145.2

SSL 35/2A GNYE

SSL 35/2A GNYE



Protective earth terminal, Screw connection, Mounting type: Mounting rail TS 35/7.5, Rated cross-section: 35 mm<sup>2</sup>, Width: 12.1 mm, Colour: Green-yellow

## Business data

Product description	Protective earth terminal
Packaging unit	20
Quantity unit	PC
Weight per piece (not including packaging)	84
Weight per piece (including packaging)	85.08
Unit of weight	G
Customs number	85369010
Country of origin	DE

17145.2

SSL 35/2A GNYE

SSL 35/2A GNYE

## Technical Data

---

### Dimensions

---

Length	53 mm
Width	12.1 mm
Height TS 35/7.5	55 mm

### Ratings

---

Rated cross-section	35 mm <sup>2</sup>
Overvoltage category	III
Contamination degree	3

17145.2

SSL 35/2A GNYE

SSL 35/2A GNYE

## Technical Data

---

### Connection data

Connection principle	Screw connection
Connection position	Lateral
Connections	2
Number of terminals per level	2
Number of levels	1
Wire cross-section single-core (rigid) / stranded, min.	1.5 mm <sup>2</sup>
Wire cross-section single core (rigid)/stranded, max.	50 mm <sup>2</sup>
Wire cross-section stranded, min.	1.5 mm <sup>2</sup>
Wire cross-section stranded, max.	50 mm <sup>2</sup>
Wire cross-section stranded with wire-end ferrules, min.	1.5 mm <sup>2</sup>
Wire cross-section stranded with wire-end ferrules, max.	35 mm <sup>2</sup>
Wire cross-section AWG, min.	16
Wire cross-section AWG, max.	1/0
Stripping length	14 mm
Screw head	Slotted
Screw threading	M 5
Tightening torque, min.	2.5 Nm
Tightening torque, max.	3 Nm

17145.2

SSL 35/2A GNYE

SSL 35/2A GNYE

## Technical Data

---

### Materials

---

Insulation housing	Polyamide 6.6
--------------------	---------------

Flammability class UL 94	V-0
--------------------------	-----

Working temperature, min.	-40 °C
---------------------------	--------

Working temperature, max.	120 °C
---------------------------	--------

### Further technical data

---

Mounting type	Mounting rail TS 35/7,5
---------------	-------------------------

Gauge plug acc. to EN 60 947-1	B9
--------------------------------	----

Number of cross-connection channels	1
-------------------------------------	---

Number of test pick-off options	1
---------------------------------	---

17145.2

SSL 35/2A GNYE

SSL 35/2A GNYE

## Approvals

---

### Standards and regulations

---

EAC approval	TR ZU 004/2011
--------------	----------------

EAC approval granted	✓
----------------------	---

### CSA approval

---

CSA approval	C22.2 No 158
--------------	--------------

CSA approval granted	✓
----------------------	---

CSA wire cross-section AWG, min.	16
----------------------------------	----

CSA wire cross-section AWG, max.	1/0
----------------------------------	-----

CSA torque, max.	3.7 Nm
------------------	--------

CSA torque, min.	3.2 Nm
------------------	--------

### CSAus approval

---

CSAus approval	UL 1059
----------------	---------

CSAus approval granted	✓
------------------------	---

CSAus wire cross-section AWG, min.	16
------------------------------------	----

CSAus wire cross-section AWG, max.	1/0
------------------------------------	-----

CSAus torque, min.	3.2 Nm
--------------------	--------

CSAus torque, max.	3.7 Nm
--------------------	--------

### KEMA KEUR approval

---

KEMA KEUR approval	EN 60947-7-2
--------------------	--------------

KEMA KEUR approval granted	✓
----------------------------	---

KEMA wire cross-section single core (rigid), min.	2.5 mm <sup>2</sup>
---	---------------------

KEMA wire cross-section single-core (rigid), max.	35 mm <sup>2</sup>
---	--------------------

KEMA wire cross-section stranded, min.	2.5 mm <sup>2</sup>
--	---------------------

KEMA wire cross-section stranded, max.	35 mm <sup>2</sup>
--	--------------------

KEMA torque, min.	3.2 Nm
-------------------	--------

KEMA torque, max.	3.7 Nm
-------------------	--------

### UL Recognized

---

UL Recognized	© CONTA CLIP Verbindungstechnik GmbH   Otto-Hahn-Str. 7   D-33161 Havelhof Fon +49 (0) 52 57.98 33-0   Fax +49 (0) 52 57.98 33-33   E-Mail info@conta-clip.de   conta-clip.de
---------------	--

UL Recognized granted	Creation date 24.09.2021 01:14:32 Subject to technical modifications
-----------------------	---

UL wire cross-section single-core (rigid) AWG, min.	16
---	----

UL wire cross-section single-core (rigid) AWG, max.	1/0
---	-----

17145.2

SSL 35/2A GNYE

SSL 35/2A GNYE

## Approvals

---

### UL Recognized

---

UL factory wiring

✓

UL field wiring

✓

---

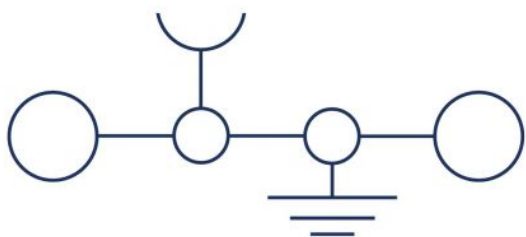
17145.2

SSL 35/2A GNYE

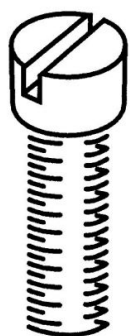
SSL 35/2A GNYE

## Media

---



**M5**



**EAC**



17145.2

SSL 35/2A GNYE

SSL 35/2A GNYE

Media

---





17145.2

SSL 35/2A GNYE

SSL 35/2A GNYE

## Accessories

---

### Cover

---



Cover, Length: 40.25 mm, Width: 16 mm, Colour: Yellow

---

### In general

Order number	Article designation	GTIN (EAN)	Packaging unit
17281.8	SAD 1/16/B	4044211199661	20 PC

---



Cover, Length: 40.25 mm, Width: 16 mm, Colour: White

---

### In general

Order number	Article designation	GTIN (EAN)	Packaging unit
17282.7	SAD 1/16/B	4044211199654	20 PC

---

17145.2

SSL 35/2A GNYE

SSL 35/2A GNYE

## Accessories

---

### Measurement pick-off terminal

---



Measurement pick-off terminal, Screw connection, Mounting type: On base, Rated cross-section: 6 mm<sup>2</sup>, Width: 8.3 mm, Colour: Beige

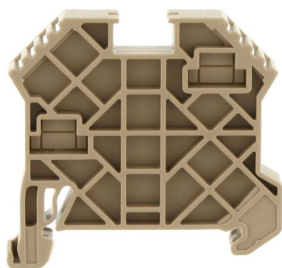
### In general

Order number	Article designation	GTIN (EAN)	Packaging unit
17148.2	SMAG 35/6	4044211186685	50 PC

---

### End bracket

---



End stop, Mounting type: Mounting rail TS 35/7.5 and TS 35/15, Width: 8 mm, Colour: Beige

### In general

Order number	Article designation	GTIN (EAN)	Packaging unit
17250.2	SES 35	4044211178253	50 PC

---

17145.2

SSL 35/2A GNYE

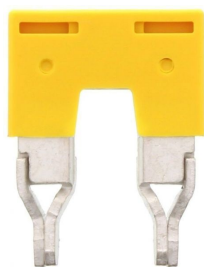
SSL 35/2A GNYE

## Accessories

---

### Insulated cross connector

---



Insulated cross-connector, No. of poles: 2, Mounting type: Plug in, Width: 26.5 mm, Rated cross-section: 35 mm<sup>2</sup>, Colour: Yellow

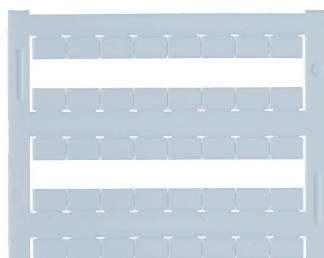
### In general

Order number	Article designation	GTIN (EAN)	Packaging unit
17252.8	SQI 35/2	4044211186807	20 PC

---

### Quick-marking

---



Terminal marker / Pocket Maxicard, Length: 5 mm, Width: 8 mm, Colour: White

### In general

Order number	Article designation	GTIN (EAN)	Packaging unit
9323.7	PMC SB 8/40 WH	4044211129231	400 PC

---

17145.2

SSL 35/2A GNYE

SSL 35/2A GNYE

## Accessories

---

### Screw driver

---



Screwdriver with bare blade, Colour: Black-grey

### In general

Order number	Article designation	GTIN (EAN)	Packaging unit
1088.0	SDB 1,2x6,5	4044211014810	1 PC

---