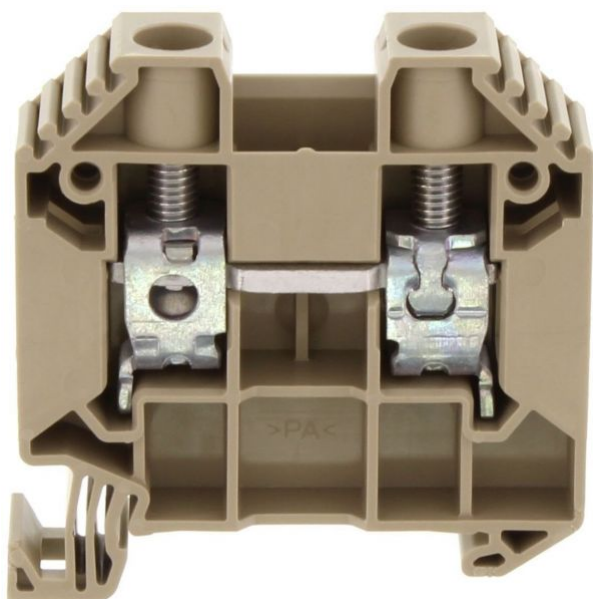


17127.2

SRK 16/2A/Z/IS BG

SRK 16/2A/Z/IS BG



Feed-through terminal, Screw connection, Mounting type: Mounting rail TS 35/7.5, Rated cross-section: 16 mm<sup>2</sup>, Width: 12.1 mm, Colour: Beige

## Business data

Product description	Feed-through terminal
Packaging unit	50
Quantity unit	PC
Weight per piece (not including packaging)	28.47
Weight per piece (including packaging)	28.67
Unit of weight	G
Customs number	85369010
Country of origin	DE

17127.2

SRK 16/2A/Z/IS BG

SRK 16/2A/Z/IS BG

## Technical Data

---

### Dimensions

---

Length	53 mm
Width	12.1 mm
Height TS 35/7.5	55 mm

### Ratings

---

Rated voltage	1000 V
Rated current	76 A
Current load, max.	101 A
Rated cross-section	16 mm <sup>2</sup>
Rated impulse voltage	8 kV
Overvoltage category	III
Contamination degree	3

17127.2

SRK 16/2A/Z/IS BG

SRK 16/2A/Z/IS BG

## Technical Data

---

### Connection data

Connection principle	Screw connection
Connection position	Lateral
Connections	2
Number of terminals per level	2
Number of levels	1
Wire cross-section single-core (rigid) / stranded, min.	1.5 mm <sup>2</sup>
Wire cross-section single core (rigid)/stranded, max.	25 mm <sup>2</sup>
Wire cross-section stranded, min.	1.5 mm <sup>2</sup>
Wire cross-section stranded, max.	25 mm <sup>2</sup>
Wire cross-section stranded with wire-end ferrules, min.	1 mm <sup>2</sup>
Wire cross-section stranded with wire-end ferrules, max.	16 mm <sup>2</sup>
Wire cross-section AWG, min.	16
Wire cross-section AWG, max.	4
Stripping length	14 mm
Screw head	Inner hex (Allen)
Screw threading	M 5
Tightening torque, min.	2.5 Nm
Tightening torque, max.	3 Nm

17127.2

SRK 16/2A/Z/IS BG

SRK 16/2A/Z/IS BG

## Technical Data

---

### Materials

---

Insulation housing	Polyamide 6.6
--------------------	---------------

Flammability class UL 94	V-0
--------------------------	-----

Working temperature, min.	-40 °C
---------------------------	--------

Working temperature, max.	120 °C
---------------------------	--------

### Further technical data

---

Mounting type	Mounting rail TS 35/7,5
---------------	-------------------------

Gauge plug acc. to EN 60 947-1	A7
--------------------------------	----

Number of cross-connection channels	2
-------------------------------------	---

End plate required	✓
--------------------	---

Number of test pick-off options	1
---------------------------------	---

17127.2

SRK 16/2A/Z/IS BG

SRK 16/2A/Z/IS BG

## Approvals

---

### Standards and regulations

---

EAC approval	TR ZU 004/2011
--------------	----------------

EAC approval granted	✓
----------------------	---

### CSA approval

---

CSA approval	C22.2 No 158
--------------	--------------

CSA approval granted	✓
----------------------	---

CSA Usegroup C: rated voltage	600 V
-------------------------------	-------

CSA Usegroup C: rated current	80 A
-------------------------------	------

CSA wire cross-section AWG, min.	16
----------------------------------	----

CSA wire cross-section AWG, max.	4
----------------------------------	---

CSA torque, max.	3 Nm
------------------	------

CSA torque, min.	2.5 Nm
------------------	--------

17127.2

SRK 16/2A/Z/IS BG

SRK 16/2A/Z/IS BG

## Approvals

---

### CSAus approval

---

CSAus approval	UL 1059
CSAus approval granted	✓
CSAus Usegroup C: rated voltage	600 V
CSAus Usegroup C: rated current	80 A
CSAus wire cross-section AWG, min.	16
CSAus wire cross-section AWG, max.	4
CSAus torque, min.	2.5 Nm
CSAus torque, max.	3 Nm

### KEMA KEUR approval

---

KEMA KEUR approval	EN 60947-7-1
KEMA KEUR approval granted	✓
KEMA rated voltage	1000 V
KEMA rated current	76 A
KEMA rated impulse voltage	8 kV
KEMA wire cross-section single core (rigid), min.	1.5 mm <sup>2</sup>
KEMA wire cross-section single-core (rigid), max.	16 mm <sup>2</sup>
KEMA wire cross-section stranded, min.	1.5 mm <sup>2</sup>
KEMA wire cross-section stranded, max.	16 mm <sup>2</sup>

17127.2

SRK 16/2A/Z/IS BG

SRK 16/2A/Z/IS BG

## Approvals

---

### KEMA KEUR approval

---

KEMA torque, min.	2.5 Nm
-------------------	--------

KEMA torque, max.	3 Nm
-------------------	------

---

### UL Recognized

---

UL Recognized	UL 1059
---------------	---------

UL Recognized granted	✓
-----------------------	---

UL Usegroup B: rated voltage	600 V
------------------------------	-------

UL Usegroup B: rated current	80 A
------------------------------	------

UL Usegroup C: rated voltage	600 V
------------------------------	-------

UL Usegroup C: rated current	80 A
------------------------------	------

---

UL wire cross-section single-core (rigid) AWG, min.	16
---	----

UL wire cross-section single-core (rigid) AWG, max.	4
---	---

UL wire cross-section stranded AWG, min.	16
--	----

UL wire cross-section stranded AWG, max.	4
--	---

---

UL torque, min.	22.1 Lb In.
-----------------	-------------

UL torque, max.	26.5 Lb In.
-----------------	-------------

---

UL wire material	Cu
------------------	----

---

UL factory wiring	✓
-------------------	---

---

UL field wiring	✓
-----------------	---

---

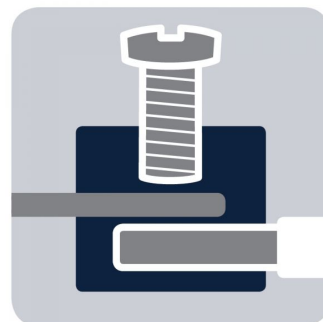
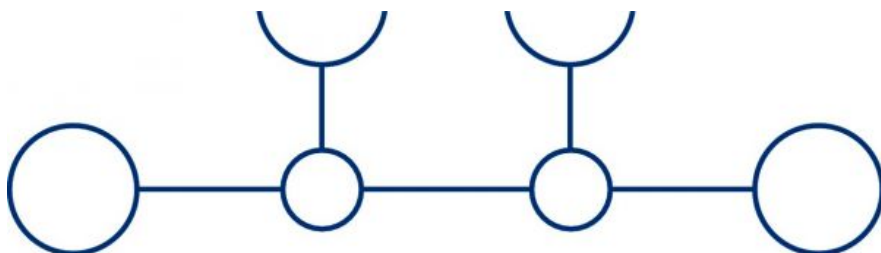
17127.2

SRK 16/2A/Z/IS BG

SRK 16/2A/Z/IS BG

## Media

---



**M5**



**EAC**





17127.2

SRK 16/2A/Z/IS BG

SRK 16/2A/Z/IS BG

Media

---



17127.2

SRK 16/2A/Z/IS BG

SRK 16/2A/Z/IS BG

## Accessories

---

### Cover

---



Cover, Length: 33.25 mm, Width: 12 mm, Colour: Yellow

### In general

Order number	Article designation	GTIN (EAN)	Packaging unit
17249.8	SAD 1/12/B	4044211199210	20 PC

---



Cover, Colour: White

### In general

Order number	Article designation	GTIN (EAN)	Packaging unit
17248.7	SAD 1/12/B	4044211181123	20 PC

---

17127.2

SRK 16/2A/Z/IS BG

SRK 16/2A/Z/IS BG

## Accessories

---

### Measurement pick-off terminal

---



Measurement pick-off terminal, Screw connection, Mounting type: On base, Rated cross-section: 6 mm<sup>2</sup>, Width: 8.3 mm, Colour: Beige

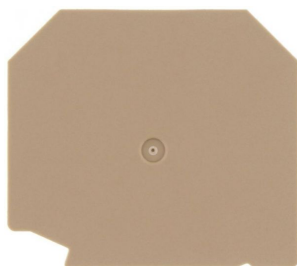
### In general

Order number	Article designation	GTIN (EAN)	Packaging unit
17135.2	SMAG 16/6	4044211181093	10 PC

---

### End plate

---



End plate, Width: 1.5 mm, Colour: Beige

### In general

Order number	Article designation	GTIN (EAN)	Packaging unit
17254.2	SAP 16/2A	4044211181109	20 PC

---

17127.2

SRK 16/2A/Z/IS BG

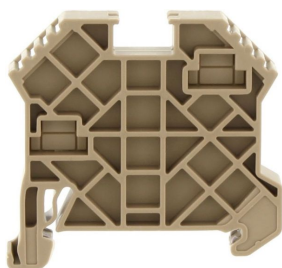
SRK 16/2A/Z/IS BG

## Accessories

---

### End bracket

---



End stop, Mounting type: Mounting rail TS 35/7.5 and TS 35/15, Width: 8 mm, Colour: Beige

### In general

Order number	Article designation	GTIN (EAN)	Packaging unit
17250.2	SES 35	4044211178253	50 PC

### Insulated cross connector

---



Insulated cross-connector, No. of poles: 2, Mounting type: Plug in, Width: 20 mm, Rated cross-section: 16 mm<sup>2</sup>, Colour: Yellow

### In general

Order number	Article designation	GTIN (EAN)	Packaging unit
17247.8	SQI 16/2	4044211181116	20 PC

17127.2

SRK 16/2A/Z/IS BG

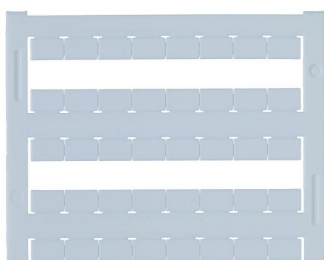
SRK 16/2A/Z/IS BG

## Accessories

---

## Quick-marking

---



Terminal marker / Pocket Maxicard, Length: 5 mm,  
Width: 8 mm, Colour: White

## In general

Order number	Article designation	GTIN (EAN)	Packaging unit
9323.7	PMC SB 8/40 WH	4044211129231	400 PC

---