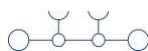
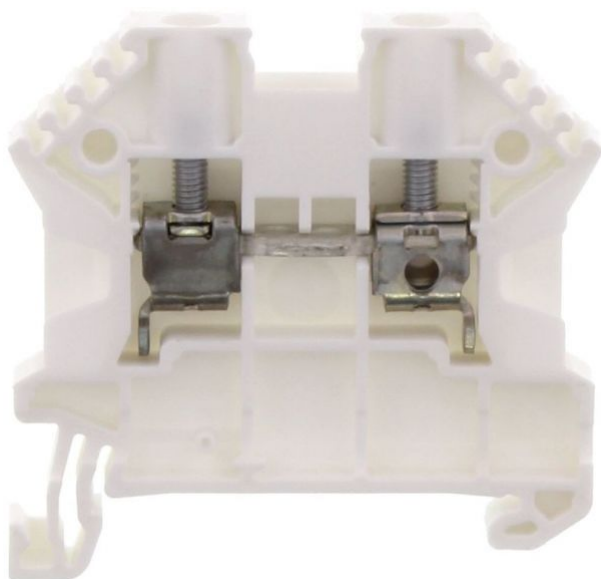


17104.7

SRK 4/2A WH

SRK 4/2A WH



Feed-through terminal, Screw connection, Mounting type: Mounting rail TS 35/7.5, Rated cross-section: 4 mm², Width: 6 mm, Colour: White

Business data

| | |
|--|-----------------------|
| Product description | Feed-through terminal |
| Explosion-proof version (EEx e) | ✓ |
| Packaging unit | 100 |
| Quantity unit | PC |
| Weight per piece (not including packaging) | 8.5 |
| Weight per piece (including packaging) | 9.08 |
| Unit of weight | G |
| Customs number | 85369010 |
| Country of origin | DE |

© CONTA-CLIP Verbindungstechnik GmbH | Otto-Hahn-Str. 7 | D-33161 Hövelhof
 Fon +49 (0) 52 57.98 33-0 | Fax +49 (0) 52 57.98 33-33 | E-Mail info@conta-clip.de | conta-clip.de

Creation date 24.02.2021 01:11:34
 Subject to technical modifications

17104.7

SRK 4/2A WH

SRK 4/2A WH

Technical Data

Dimensions

| | |
|------------------|-------|
| Length | 48 mm |
| Width | 6 mm |
| Height TS 35/7.5 | 47 mm |

Ratings

| | |
|-----------------------|-------------------|
| Rated voltage | 1000 V |
| Rated current | 32 A |
| Current load, max. | 41 A |
| Rated cross-section | 4 mm ² |
| Rated impulse voltage | 8 kV |
| Overvoltage category | III |
| Contamination degree | 3 |

17104.7

SRK 4/2A WH

SRK 4/2A WH

Technical Data

Connection data

| | |
|--|---------------------|
| Connection principle | Screw connection |
| Connection position | Lateral |
| Connections | 2 |
| Number of terminals per level | 2 |
| Number of levels | 1 |
| Wire cross-section single-core (rigid) / stranded, min. | 0.2 mm ² |
| Wire cross-section single core (rigid)/stranded, max. | 6 mm ² |
| Wire cross-section stranded, min. | 0.2 mm ² |
| Wire cross-section stranded, max. | 6 mm ² |
| Wire cross-section stranded with wire-end ferrules, min. | 0.2 mm ² |
| Wire cross-section stranded with wire-end ferrules, max. | 4 mm ² |
| Wire cross-section AWG, min. | 26 |
| Wire cross-section AWG, max. | 10 |
| Stripping length | 10 mm |
| Screw head | Slotted |
| Screw threading | M 3 |
| Tightening torque, min. | 0.5 Nm |
| Tightening torque, max. | 1 Nm |

17104.7

SRK 4/2A WH

SRK 4/2A WH

Technical Data

Materials

| | |
|--------------------|---------------|
| Insulation housing | Polyamide 6.6 |
|--------------------|---------------|

| | |
|--------------------------|-----|
| Flammability class UL 94 | V-0 |
|--------------------------|-----|

| | |
|---------------------------|--------|
| Working temperature, min. | -40 °C |
|---------------------------|--------|

| | |
|---------------------------|--------|
| Working temperature, max. | 120 °C |
|---------------------------|--------|

Further technical data

| | |
|---------------|-------------------------|
| Mounting type | Mounting rail TS 35/7,5 |
|---------------|-------------------------|

| | |
|--------------------------------|----|
| Gauge plug acc. to EN 60 947-1 | A4 |
|--------------------------------|----|

| | |
|-------------------------------------|---|
| Number of cross-connection channels | 2 |
|-------------------------------------|---|

| | |
|--------------------|---|
| End plate required | ✓ |
|--------------------|---|

| | |
|---------------------------------|---|
| Number of test pick-off options | 1 |
|---------------------------------|---|

17104.7

SRK 4/2A WH

SRK 4/2A WH

Approvals

Standards and regulations

| | |
|------------------------------|--------------------|
| Partial certification number | DEKRA 12ATEX0039 U |
| IECEX certification number | IECEX DEK 12.0006U |
| EAC approval | TR ZU 004/2011 |
| EAC approval granted | ✓ |

CSA approval

| | |
|----------------------------------|--------------|
| CSA approval | C22.2 No 158 |
| CSA approval granted | ✓ |
| CSA Usegroup C: rated voltage | 600 V |
| CSA Usegroup C: rated current | 35 A |
| CSA wire cross-section AWG, min. | 26 |
| CSA wire cross-section AWG, max. | 10 |
| CSA torque, max. | 1 Nm |
| CSA torque, min. | 0.5 Nm |

17104.7

SRK 4/2A WH

SRK 4/2A WH

Approvals

CSAus approval

| | |
|------------------------------------|---------|
| CSAus approval | UL 1059 |
| CSAus approval granted | ✓ |
| CSAus Usegroup C: rated voltage | 600 V |
| CSAus Usegroup C: rated current | 35 A |
| CSAus wire cross-section AWG, min. | 26 |
| CSAus wire cross-section AWG, max. | 10 |
| CSAus torque, min. | 0.5 Nm |
| CSAus torque, max. | 1 Nm |

17104.7

SRK 4/2A WH

SRK 4/2A WH

Approvals

cUL Recognized

| | |
|--|--------------|
| cUL Recognized | C22.2 No 158 |
| cUL Recognized | ✓ |
| cUL Usegroup B: rated voltage | 600 V |
| cUL Usegroup B: rated current | 35 A |
| cUL Usegroup C: rated voltage | 600 V |
| cUL Usegroup C: rated current | 35 A |
| cUL wire cross-section single-core (rigid) AWG, min. | 26 |
| cUL wire cross-section single-core (rigid) AWG, max. | 10 |
| cUL wire cross-section stranded AWG, min. | 26 |
| cUL wire cross-section stranded AWG, max. | 10 |
| cUL torque, min. | 0.5 Nm |
| cUL torque, max. | 1 Nm |
| cUL wire material | Cu |

17104.7

SRK 4/2A WH

SRK 4/2A WH

Approvals

German Lloyd approval

| | |
|---------------------------|-------------------|
| GL approval | IEC 60947-7-1 |
| GL approval granted | ✓ |
| GL rated voltage | 1000 V |
| GL rated current | 41 A |
| GL rated cross-section | 4 mm ² |
| GL rated impulse voltage | 8 kV |
| GL environmental category | C |

KEMA KEUR approval

| | |
|---|---------------------|
| KEMA KEUR approval | EN 60947-7-1 |
| KEMA KEUR approval granted | ✓ |
| KEMA rated voltage | 1000 V |
| KEMA rated current | 41 A |
| KEMA rated impulse voltage | 8 kV |
| KEMA wire cross-section single core (rigid), min. | 0.5 mm ² |
| KEMA wire cross-section single-core (rigid), max. | 6 mm ² |
| KEMA wire cross-section stranded, min. | 0.5 mm ² |
| KEMA wire cross-section stranded, max. | 6 mm ² |
| KEMA torque, min. | 0.5 Nm |

17104.7

SRK 4/2A WH

SRK 4/2A WH

Approvals

KEMA KEUR approval

| | |
|-------------------|------|
| KEMA torque, max. | 1 Nm |
|-------------------|------|

UL Recognized

| | |
|---------------|---------|
| UL Recognized | UL 1059 |
|---------------|---------|

| | |
|-----------------------|---|
| UL Recognized granted | ✓ |
|-----------------------|---|

| | |
|------------------------------|-------|
| UL Usegroup B: rated voltage | 600 V |
|------------------------------|-------|

| | |
|------------------------------|------|
| UL Usegroup B: rated current | 35 A |
|------------------------------|------|

| | |
|------------------------------|-------|
| UL Usegroup C: rated voltage | 600 V |
|------------------------------|-------|

| | |
|------------------------------|------|
| UL Usegroup C: rated current | 35 A |
|------------------------------|------|

| | |
|---|----|
| UL wire cross-section single-core (rigid) AWG, min. | 26 |
|---|----|

| | |
|---|----|
| UL wire cross-section single-core (rigid) AWG, max. | 10 |
|---|----|

| | |
|--|----|
| UL wire cross-section stranded AWG, min. | 26 |
|--|----|

| | |
|--|----|
| UL wire cross-section stranded AWG, max. | 10 |
|--|----|

| | |
|-----------------|------------|
| UL torque, min. | 4.4 Lb In. |
|-----------------|------------|

| | |
|-----------------|------------|
| UL torque, max. | 8.8 Lb In. |
|-----------------|------------|

| | |
|------------------|----|
| UL wire material | Cu |
|------------------|----|

| | |
|-------------------|---|
| UL factory wiring | ✓ |
|-------------------|---|

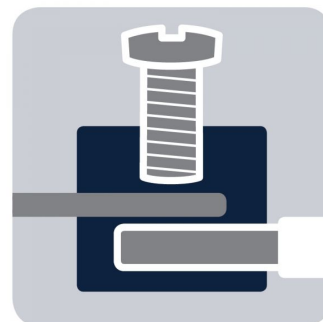
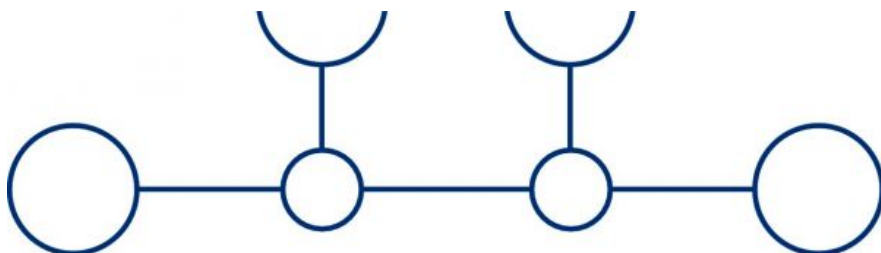
| | |
|-----------------|---|
| UL field wiring | ✓ |
|-----------------|---|

17104.7

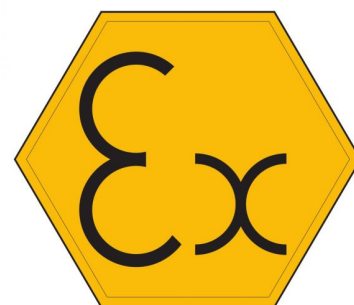
SRK 4/2A WH

SRK 4/2A WH

Media



M3



EAC

17104.7

SRK 4/2A WH

SRK 4/2A WH

Media



CRA[®] US

17104.7

SRK 4/2A WH

SRK 4/2A WH

Accessories

Cover



Cover, Width: 6 mm, Colour: Yellow

In general

| Order number | Article designation | GTIN (EAN) | Packaging unit |
|--------------|---------------------|---------------|----------------|
| 17296.8 | SAD 1/6/B | 4044211205447 | 50 PC |

Measurement pick-off terminal



Measurement pick-off terminal, Screw connection, Mounting type: On base, Rated cross-section: 2.5 mm², Width: 5.9 mm, Colour: Beige

In general

| Order number | Article designation | GTIN (EAN) | Packaging unit |
|--------------|---------------------|---------------|----------------|
| 17120.2 | SMAG 4/2,5 | 4044211172107 | 10 PC |

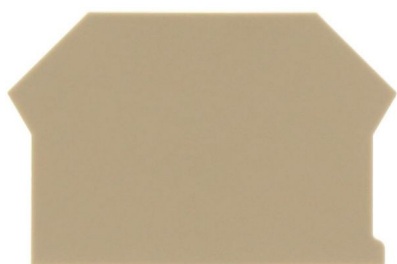
17104.7

SRK 4/2A WH

SRK 4/2A WH

Accessories

End plate

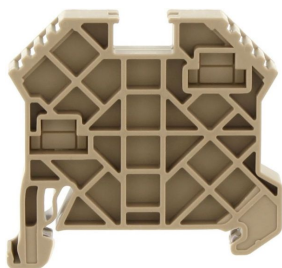


End plate, Width: 1.5 mm, Colour: Beige

In general

| Order number | Article designation | GTIN (EAN) | Packaging unit |
|--------------|---------------------|---------------|----------------|
| 2001.2 | AP 2,5-10 | 4044211047979 | 50 PC |

End bracket



End stop, Mounting type: Mounting rail TS 35/7.5 and TS 35/15, Width: 8 mm, Colour: Beige

In general

| Order number | Article designation | GTIN (EAN) | Packaging unit |
|--------------|---------------------|---------------|----------------|
| 17250.2 | SES 35 | 4044211178253 | 50 PC |

17104.7

SRK 4/2A WH

SRK 4/2A WH

Accessories

Insulating cover for cross-connector



Insulating cap, Colour: Yellow

In general

| Order number | Article designation | GTIN (EAN) | Packaging unit |
|--------------|---------------------|---------------|----------------|
| 17200.8 | SQIK 2,5-10 | 4044211148539 | 20 PC |

Insulated cross connector



Insulated cross-connector, No. of poles: 10, Mounting type: Plug in, Width: 60.1 mm, Rated cross-section: 4 mm², Colour: Yellow

In general

| Order number | Article designation | GTIN (EAN) | Packaging unit |
|--------------|---------------------|---------------|----------------|
| 17219.8 | SQI 4/10 | 4044211148720 | 10 PC |

17104.7

SRK 4/2A WH

SRK 4/2A WH

Accessories

Insulated cross connector



Insulated cross-connector, No. of poles: 2, Mounting type: Plug in, Width: 11.3 mm, Rated cross-section: 4 mm², Colour: Yellow

In general

| Order number | Article designation | GTIN (EAN) | Packaging unit |
|--------------|---------------------|---------------|----------------|
| 17211.8 | SQI 4/2 | 4044211148645 | 50 PC |



Insulated cross-connector, No. of poles: 3, Mounting type: Plug in, Width: 17.4 mm, Rated cross-section: 4 mm², Colour: Yellow

In general

| Order number | Article designation | GTIN (EAN) | Packaging unit |
|--------------|---------------------|---------------|----------------|
| 17212.8 | SQI 4/3 | 4044211148652 | 50 PC |

17104.7

SRK 4/2A WH

SRK 4/2A WH

Accessories

Insulated cross connector



Insulated cross-connector, No. of poles: 30, Mounting type: Plug in, Width: 181.1 mm, Rated cross-section: 4 mm², Colour: Yellow

In general

| Order number | Article designation | GTIN (EAN) | Packaging unit |
|--------------|---------------------|---------------|----------------|
| 17220.8 | SQI 4/30 | 4044211148737 | 5 PC |



Insulated cross-connector, No. of poles: 4, Mounting type: Plug in, Width: 23.5 mm, Rated cross-section: 4 mm², Colour: Yellow

In general

| Order number | Article designation | GTIN (EAN) | Packaging unit |
|--------------|---------------------|---------------|----------------|
| 17213.8 | SQI 4/4 | 4044211148669 | 20 PC |

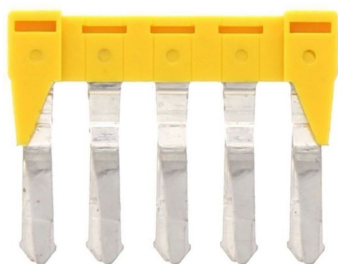
17104.7

SRK 4/2A WH

SRK 4/2A WH

Accessories

Insulated cross connector



Insulated cross-connector, No. of poles: 5, Mounting type: Plug in, Width: 29.6 mm, Rated cross-section: 4 mm², Colour: Yellow

In general

| Order number | Article designation | GTIN (EAN) | Packaging unit |
|--------------|---------------------|---------------|----------------|
| 17214.8 | SQI 4/5 | 4044211148676 | 20 PC |



Insulated cross-connector, No. of poles: 8, Mounting type: Plug in, Width: 47.9 mm, Rated cross-section: 4 mm², Colour: Yellow

In general

| Order number | Article designation | GTIN (EAN) | Packaging unit |
|--------------|---------------------|---------------|----------------|
| 17217.8 | SQI 4/8 | 4044211148706 | 10 PC |

17104.7

SRK 4/2A WH

SRK 4/2A WH

Accessories

Insulated cross connector

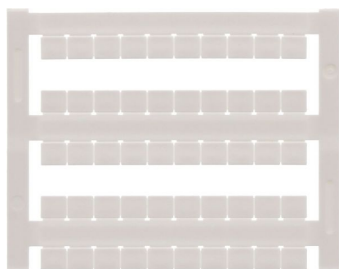


Insulated cross-connector, No. of poles: 9, Mounting type: Plug in, Width: 54 mm, Rated cross-section: 4 mm², Colour: Yellow

In general

| Order number | Article designation | GTIN (EAN) | Packaging unit |
|--------------|---------------------|---------------|----------------|
| 17218.8 | SQI 4/9 | 4044211148713 | 10 PC |

Quick-marking



Terminal marker / Pocket Maxicard, Length: 5 mm, Width: 6 mm, Colour: White

In general

| Order number | Article designation | GTIN (EAN) | Packaging unit |
|--------------|---------------------|---------------|----------------|
| 4702.7 | PMC SB 6/50 WH | 4044211089986 | 500 PC |

17104.7

SRK 4/2A WH

SRK 4/2A WH

Accessories

Screw driver

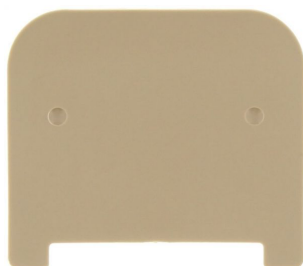


Screwdriver with bare blade, Colour: Black-grey

In general

| Order number | Article designation | GTIN (EAN) | Packaging unit |
|--------------|---------------------|---------------|----------------|
| 1086.0 | SDB 0,6x3,5 | 4044211014797 | 1 PC |

Partition plate



Partition plate, Width: 1.5 mm, Colour: Beige

In general

| Order number | Article designation | GTIN (EAN) | Packaging unit |
|--------------|---------------------|---------------|----------------|
| 2002.2 | TW 2,5-10 | 4044211048044 | 50 PC |