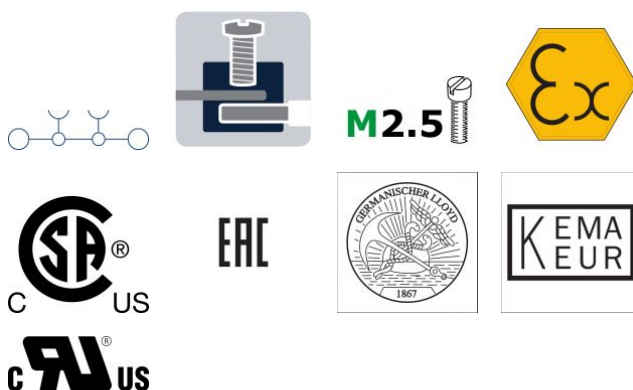
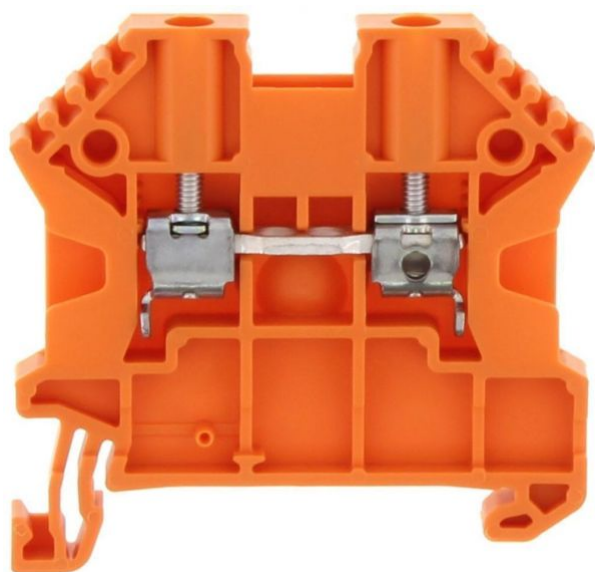


17100.3

SRK 2,5/2A OG

SRK 2,5/2A OG



Feed-through terminal, Screw connection, Mounting type: Mounting rail TS 35/7.5, Rated cross-section: 2.5 mm², Width: 5 mm, Colour: Orange

Business data

Product description	Feed-through terminal
Explosion-proof version (EEx e)	✓
Packaging unit	100
Quantity unit	PC
Weight per piece (not including packaging)	6.6
Weight per piece (including packaging)	7.11
Unit of weight	G
Customs number	85369010
Country of origin	DE

© CONTA-CLIP Verbindungstechnik GmbH | Otto-Hahn-Str. 7 | D-33161 Hövelhof
 Fon +49 (0) 52 57.98 33-0 | Fax +49 (0) 52 57.98 33-33 | E-Mail info@conta-clip.de | conta-clip.de

Creation date 24.02.2021 01:11:31
 Subject to technical modifications

17100.3

SRK 2,5/2A OG

SRK 2,5/2A OG

Technical Data

Dimensions

Length	48 mm
Width	5 mm
Height TS 35/7.5	47 mm

Ratings

Rated voltage	1000 V
Rated current	24 A
Current load, max.	32 A
Rated cross-section	2.5 mm ²
Rated impulse voltage	8 kV
Overvoltage category	III
Contamination degree	3

17100.3

SRK 2,5/2A OG

SRK 2,5/2A OG

Technical Data

Connection data

Connection principle	Screw connection
Connection position	Lateral
Connections	2
Number of terminals per level	2
Number of levels	1
Wire cross-section single-core (rigid) / stranded, min.	0.2 mm ²
Wire cross-section single core (rigid)/stranded, max.	4 mm ²
Wire cross-section stranded, min.	0.2 mm ²
Wire cross-section stranded, max.	4 mm ²
Wire cross-section stranded with wire-end ferrules, min.	0.2 mm ²
Wire cross-section stranded with wire-end ferrules, max.	2.5 mm ²
Wire cross-section AWG, min.	30
Wire cross-section AWG, max.	12
Stripping length	10 mm
Screw head	Slotted
Screw threading	M 2,5
Tightening torque, min.	0.4 Nm
Tightening torque, max.	0.8 Nm

17100.3

SRK 2,5/2A OG

SRK 2,5/2A OG

Technical Data

Materials

Insulation housing	Polyamide 6.6
--------------------	---------------

Flammability class UL 94	V-0
--------------------------	-----

Working temperature, min.	-40 °C
---------------------------	--------

Working temperature, max.	120 °C
---------------------------	--------

Further technical data

Mounting type	Mounting rail TS 35/7,5
---------------	-------------------------

Gauge plug acc. to EN 60 947-1	A3
--------------------------------	----

Number of cross-connection channels	2
-------------------------------------	---

End plate required	✓
--------------------	---

Number of test pick-off options	1
---------------------------------	---

17100.3

SRK 2,5/2A OG

SRK 2,5/2A OG

Approvals

Standards and regulations

Partial certification number	DEKRA 12ATEX0039 U
IECEX certification number	IECEX DEK 12.0006U
EAC approval	TR ZU 004/2011
EAC approval granted	✓

CSA approval

CSA approval	C22.2 No 158
CSA approval granted	✓
CSA Usegroup C: rated voltage	600 V
CSA Usegroup C: rated current	25 A
CSA wire cross-section AWG, min.	30
CSA wire cross-section AWG, max.	12
CSA torque, max.	0.8 Nm
CSA torque, min.	0.6 Nm

17100.3

SRK 2,5/2A OG

SRK 2,5/2A OG

Approvals

CSAus approval

CSAus approval	UL 1059
CSAus approval granted	✓
CSAus Usegroup C: rated voltage	600 V
CSAus Usegroup C: rated current	25 A
CSAus wire cross-section AWG, min.	30
CSAus wire cross-section AWG, max.	12
CSAus torque, min.	0.6 Nm
CSAus torque, max.	0.8 Nm

17100.3

SRK 2,5/2A OG

SRK 2,5/2A OG

Approvals

cUL Recognized

cUL Recognized	C22.2 No 158
cUL Recognized	✓
cUL Usegroup B: rated voltage	600 V
cUL Usegroup B: rated current	25 A
cUL Usegroup C: rated voltage	600 V
cUL Usegroup C: rated current	25 A
cUL wire cross-section single-core (rigid) AWG, min.	30
cUL wire cross-section single-core (rigid) AWG, max.	12
cUL wire cross-section stranded AWG, min.	30
cUL wire cross-section stranded AWG, max.	12
cUL torque, min.	0.6 Nm
cUL torque, max.	0.8 Nm
cUL wire material	Cu

17100.3

SRK 2,5/2A OG

SRK 2,5/2A OG

Approvals

German Lloyd approval

GL approval	IEC 60947-7-1
GL approval granted	✓
GL rated voltage	1000 V
GL rated current	32 A
GL rated cross-section	2.5 mm ²
GL rated impulse voltage	8 kV
GL environmental category	C

KEMA KEUR approval

KEMA KEUR approval	EN 60947-7-1
KEMA KEUR approval granted	✓
KEMA rated voltage	1000 V
KEMA rated current	32 A
KEMA rated impulse voltage	8 kV
KEMA wire cross-section single core (rigid), min.	0.5 mm ²
KEMA wire cross-section single-core (rigid), max.	4 mm ²
KEMA wire cross-section stranded, min.	0.5 mm ²
KEMA wire cross-section stranded, max.	4 mm ²
KEMA torque, min.	0.6 Nm

17100.3

SRK 2,5/2A OG

SRK 2,5/2A OG

Approvals

KEMA KEUR approval

KEMA torque, max.	0.8 Nm
-------------------	--------

UL Recognized

UL Recognized	UL 1059
---------------	---------

UL Recognized granted	✓
-----------------------	---

UL Usegroup B: rated voltage	600 V
------------------------------	-------

UL Usegroup B: rated current	25 A
------------------------------	------

UL Usegroup C: rated voltage	600 V
------------------------------	-------

UL Usegroup C: rated current	25 A
------------------------------	------

UL wire cross-section single-core (rigid) AWG, min.	30
---	----

UL wire cross-section single-core (rigid) AWG, max.	12
---	----

UL wire cross-section stranded AWG, min.	30
--	----

UL wire cross-section stranded AWG, max.	12
--	----

UL torque, min.	5.3 Lb In.
-----------------	------------

UL torque, max.	7.1 Lb In.
-----------------	------------

UL wire material	Cu
------------------	----

UL factory wiring	✓
-------------------	---

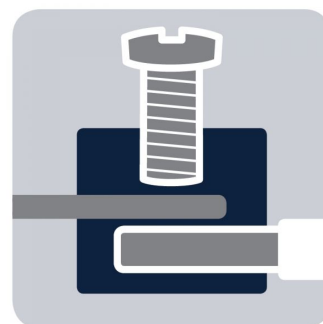
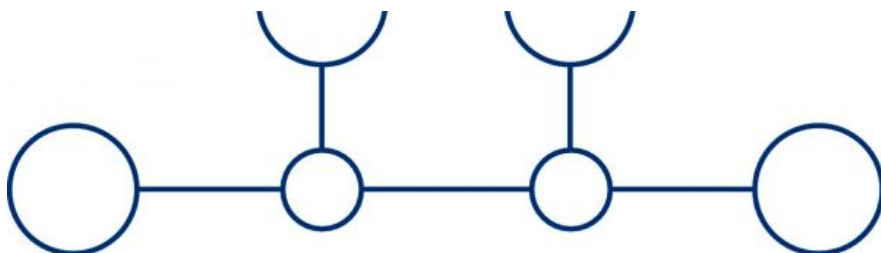
UL field wiring	✓
-----------------	---

17100.3

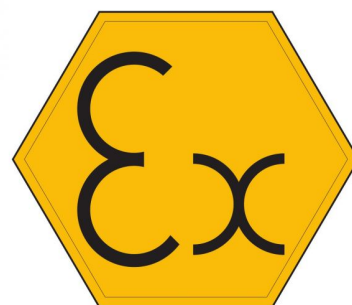
SRK 2,5/2A OG

SRK 2,5/2A OG

Media



M2.5



EAC

17100.3

SRK 2,5/2A OG

SRK 2,5/2A OG

Media



CRA[®] US

17100.3

SRK 2,5/2A OG

SRK 2,5/2A OG

Accessories

Cover

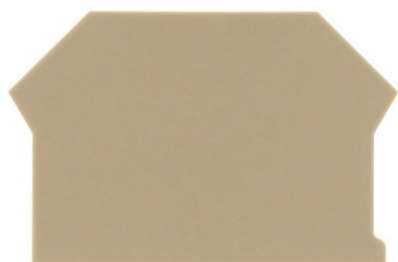


Cover, Width: 5 mm, Colour: Yellow

In general

Order number	Article designation	GTIN (EAN)	Packaging unit
17295.8	SAD 1/5/B	4044211205430	50 PC

End plate



End plate, Width: 1.5 mm, Colour: Beige

In general

Order number	Article designation	GTIN (EAN)	Packaging unit
2001.2	AP 2,5-10	4044211047979	50 PC

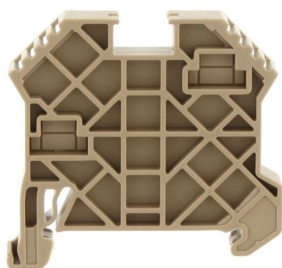
17100.3

SRK 2,5/2A OG

SRK 2,5/2A OG

Accessories

End bracket



End stop, Mounting type: Mounting rail TS 35/7.5 and TS 35/15, Width: 8 mm, Colour: Beige

In general

Order number	Article designation	GTIN (EAN)	Packaging unit
17250.2	SES 35	4044211178253	50 PC

Insulating cover for cross-connector



Insulating cap, Colour: Yellow

In general

Order number	Article designation	GTIN (EAN)	Packaging unit
17200.8	SQIK 2,5-10	4044211148539	20 PC

17100.3

SRK 2,5/2A OG

SRK 2,5/2A OG

Accessories

Insulated cross connector



Insulated cross-connector, No. of poles: 10, Mounting type: Plug in, Width: 50.7 mm, Rated cross-section: 2.5 mm², Colour: Yellow

In general

Order number	Article designation	GTIN (EAN)	Packaging unit
17209.8	SQI 2,5/10	4044211148621	10 PC



Insulated cross-connector, No. of poles: 2, Mounting type: Plug in, Width: 9.9 mm, Rated cross-section: 2.5 mm², Colour: Yellow

In general

Order number	Article designation	GTIN (EAN)	Packaging unit
17201.8	SQI 2,5/2	4044211148546	50 PC

17100.3

SRK 2,5/2A OG

SRK 2,5/2A OG

Accessories

Insulated cross connector



Insulated cross-connector, No. of poles: 3, Mounting type: Plug in, Width: 15 mm, Rated cross-section: 2.5 mm², Colour: Yellow

In general

Order number	Article designation	GTIN (EAN)	Packaging unit
17202.8	SQI 2,5/3	4044211148553	50 PC



Insulated cross-connector, No. of poles: 30, Mounting type: Plug in, Width: 152.7 mm, Rated cross-section: 2.5 mm², Colour: Yellow

In general

Order number	Article designation	GTIN (EAN)	Packaging unit
17210.8	SQI 2,5/30	4044211148638	5 PC

17100.3

SRK 2,5/2A OG

SRK 2,5/2A OG

Accessories

Insulated cross connector



Insulated cross-connector, No. of poles: 4, Mounting type: Plug in, Width: 20.1 mm, Rated cross-section: 2.5 mm², Colour: Yellow

In general

Order number	Article designation	GTIN (EAN)	Packaging unit
17203.8	SQI 2,5/4	4044211148560	20 PC



Insulated cross-connector, No. of poles: 5, Mounting type: Plug in, Width: 25.2 mm, Rated cross-section: 2.5 mm², Colour: Yellow

In general

Order number	Article designation	GTIN (EAN)	Packaging unit
17204.8	SQI 2,5/5	4044211148577	20 PC

17100.3

SRK 2,5/2A OG

SRK 2,5/2A OG

Accessories

Insulated cross connector



Insulated cross-connector, No. of poles: 6, Mounting type: Plug in, Width: 30.3 mm, Rated cross-section: 2.5 mm², Colour: Yellow

In general

Order number	Article designation	GTIN (EAN)	Packaging unit
17205.8	SQI 2,5/6	4044211148584	20 PC



Insulated cross-connector, No. of poles: 7, Mounting type: Plug in, Width: 35.4 mm, Rated cross-section: 2.5 mm², Colour: Yellow

In general

Order number	Article designation	GTIN (EAN)	Packaging unit
17206.8	SQI 2,5/7	4044211148591	20 PC

17100.3

SRK 2,5/2A OG

SRK 2,5/2A OG

Accessories

Insulated cross connector



Insulated cross-connector, No. of poles: 8, Mounting type: Plug in, Width: 40.5 mm, Rated cross-section: 2.5 mm², Colour: Yellow

In general

Order number	Article designation	GTIN (EAN)	Packaging unit
17207.8	SQI 2,5/8	4044211148607	10 PC



Insulated cross-connector, No. of poles: 9, Mounting type: Plug in, Width: 45.6 mm, Rated cross-section: 2.5 mm², Colour: Yellow

In general

Order number	Article designation	GTIN (EAN)	Packaging unit
17208.8	SQI 2,5/9	4044211148614	10 PC

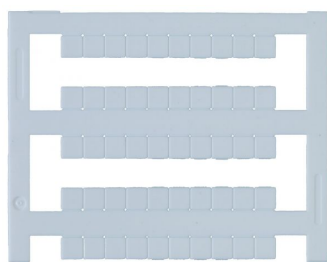
17100.3

SRK 2,5/2A OG

SRK 2,5/2A OG

Accessories

Quick-marking



Terminal marker / Pocket Maxicard, Length: 5 mm,
Width: 5 mm, Colour: White

In general

Order number	Article designation	GTIN (EAN)	Packaging unit
4600.7	PMC SB 5/50 WH	4044211088903	500 PC

Screw driver



Screwdriver with bare blade, Colour: Black-grey

In general

Order number	Article designation	GTIN (EAN)	Packaging unit
1085.0	SDB 0,5x3,0	4044211014643	1 PC

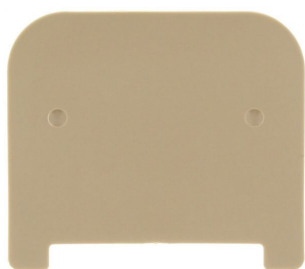
17100.3

SRK 2,5/2A OG

SRK 2,5/2A OG

Accessories

Partition plate



Partition plate, Width: 1.5 mm, Colour: Beige

In general

Order number	Article designation	GTIN (EAN)	Packaging unit
2002.2	TW 2,5-10	4044211048044	50 PC
