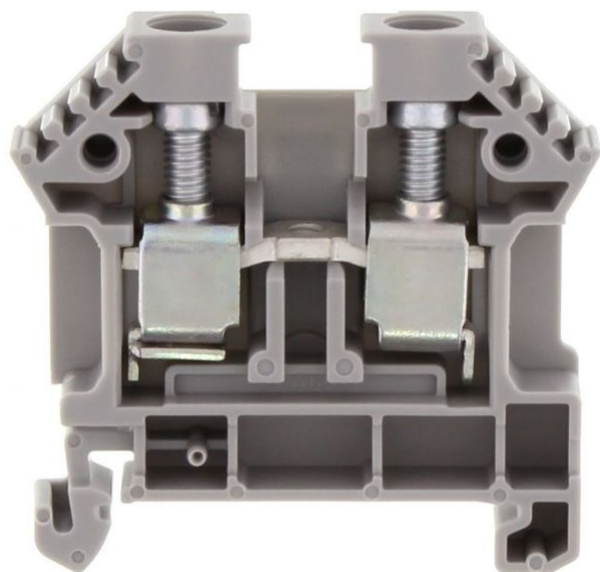


1578.6

RK 6-10/35 GR

RK 6-10/35 GR



Feed-through terminal, Screw connection, Mounting type: Mounting rail TS 35/7.5, Rated cross-section: 10 mm², Width: 8 mm, Colour: Grey

Business data

Product description	Feed-through terminal
Packaging unit	100
Quantity unit	PC
Weight per piece (not including packaging)	14.4
Weight per piece (including packaging)	15.21
Unit of weight	G
Customs number	85369010
Country of origin	DE

1578.6

RK 6-10/35 GR

RK 6-10/35 GR

Technical Data

Dimensions

Length	48 mm
Width	8 mm
Height TS 35/7.5	47 mm

Ratings

Rated voltage	800 V
Rated current	57 A
Rated cross-section	10 mm ²
Rated impulse voltage	6 kV
Overvoltage category	III
Contamination degree	3

1578.6

RK 6-10/35 GR

RK 6-10/35 GR

Technical Data

Connection data

Connection principle	Screw connection
Connection position	Lateral
Connections	2
Number of terminals per level	2
Number of levels	1
Wire cross-section single-core (rigid) / stranded, min.	0.2 mm ²
Wire cross-section single core (rigid)/stranded, max.	10 mm ²
Wire cross-section stranded, min.	0.2 mm ²
Wire cross-section stranded, max.	10 mm ²
Wire cross-section stranded with wire-end ferrules, min.	0.2 mm ²
Wire cross-section stranded with wire-end ferrules, max.	10 mm ²
Wire cross-section AWG, min.	22
Wire cross-section AWG, max.	8
Stripping length	12 mm
Screw head	Slotted
Screw threading	M 4
Tightening torque, min.	1.2 Nm
Tightening torque, max.	2 Nm

1578.6

RK 6-10/35 GR

RK 6-10/35 GR

Technical Data

Materials

Insulation housing	Polyamide 6.6
--------------------	---------------

Flammability class UL 94	V-2
--------------------------	-----

Working temperature, min.	-40 °C
---------------------------	--------

Working temperature, max.	105 °C
---------------------------	--------

Further technical data

Mounting type	Mounting rail TS 35/7,5
---------------	-------------------------

Gauge plug acc. to EN 60 947-1	A5
--------------------------------	----

Number of cross-connection channels	1
-------------------------------------	---

End plate required	✓
--------------------	---

Number of test pick-off options	1
---------------------------------	---

1578.6

RK 6-10/35 GR

RK 6-10/35 GR

Approvals

Standards and regulations

EAC approval	TR ZU 004/2011
--------------	----------------

EAC approval granted	✓
----------------------	---

CSA approval

CSA approval	C22.2 No 158
--------------	--------------

CSA approval granted	✓
----------------------	---

CSA Usegroup C: rated voltage	600 V
-------------------------------	-------

CSA Usegroup C: rated current	65 A
-------------------------------	------

CSA wire cross-section AWG, min.	22
----------------------------------	----

CSA wire cross-section AWG, max.	8
----------------------------------	---

CSA stripping length	12 mm
----------------------	-------

CSAus approval

CSAus approval	UL 1059
----------------	---------

CSAus approval granted	✓
------------------------	---

CSAus Usegroup C: rated voltage	600 V
---------------------------------	-------

CSAus Usegroup C: rated current	65 A
---------------------------------	------

CSAus wire cross-section AWG, min.	22
------------------------------------	----

1578.6

RK 6-10/35 GR

RK 6-10/35 GR

Approvals

CSAus approval

CSAus wire cross-section AWG, max.	8
CSAus stripping length	12 mm

KEMA KEUR approval

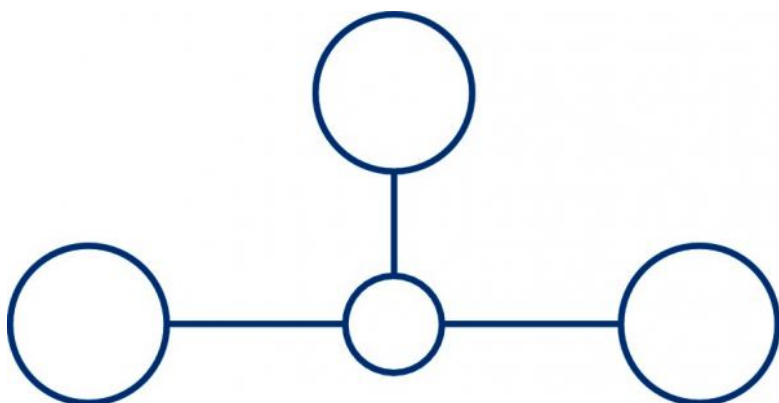
KEMA KEUR approval	EN 60947-7-1
KEMA KEUR approval granted	✓
KEMA rated voltage	800 V
KEMA rated current	57 A
KEMA rated impulse voltage	6 kV
KEMA wire cross-section single core (rigid), min.	0.2 mm ²
KEMA wire cross-section single-core (rigid), max.	10 mm ²
KEMA wire cross-section stranded, min.	0.2 mm ²
KEMA wire cross-section stranded, max.	10 mm ²
KEMA torque, min.	1.2 Nm
KEMA torque, max.	2 Nm

1578.6

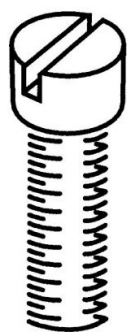
RK 6-10/35 GR

RK 6-10/35 GR

Media



M4



EAC



1578.6

RK 6-10/35 GR

RK 6-10/35 GR

Accessories

Cover



Cover, Length: 32 mm, Width: 1.3 mm, Colour: Yellow

In general

Order number	Article designation	GTIN (EAN)	Packaging unit
2054.0	AD 4/32/B	4044211048600	50 PC



Cover, Length: 32 mm, Width: 1.3 mm, Colour: Yellow

In general

Order number	Article designation	GTIN (EAN)	Packaging unit
2495.0	AD 4/32/B/E	4044211052966	50 PC

1578.6

RK 6-10/35 GR

RK 6-10/35 GR

Accessories

Cover



Cover, Length: 26.5 mm, Width: 8 mm, Colour: Yellow

In general

Order number	Article designation	GTIN (EAN)	Packaging unit
2954.0	AD 1/8/B	4044211056827	50 PC



Cover, Length: 26.5 mm, Width: 8 mm, Colour: White

In general

Order number	Article designation	GTIN (EAN)	Packaging unit
2966.0	AD 1/8	4044211056957	50 PC

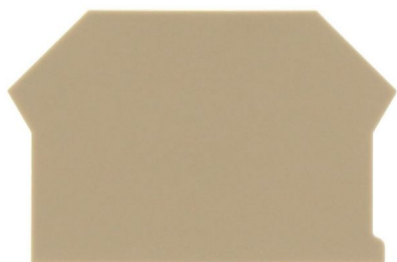
1578.6

RK 6-10/35 GR

RK 6-10/35 GR

Accessories

End plate



End plate, Width: 1.5 mm, Colour: Beige

In general

Order number	Article designation	GTIN (EAN)	Packaging unit
2001.2	AP 2,5-10	4044211047979	50 PC

End bracket



End stop, Mounting type: Mounting rail TS 35/7.5,
Width: 9.5 mm, Colour: Beige

In general

Order number	Article designation	GTIN (EAN)	Packaging unit
2828.0	ES 35/K/ST	4044211055547	50 PC

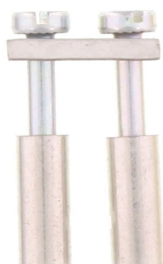
1578.6

RK 6-10/35 GR

RK 6-10/35 GR

Accessories

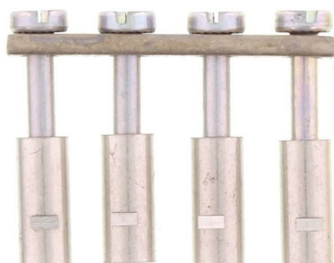
Cross connector



Cross-connector, No. of poles: 2, Mounting type: Can be screwed on, Width: 14.1 mm, Rated cross-section: 10 mm², Colour: natural

In general

Order number	Article designation	GTIN (EAN)	Packaging unit
2060.0	Q 2	4044211048662	50 PC



Cross-connector, No. of poles: 3, Mounting type: Can be screwed on, Width: 22.2 mm, Rated cross-section: 10 mm², Colour: natural

In general

Order number	Article designation	GTIN (EAN)	Packaging unit
2061.0	Q 3	4044211048679	50 PC

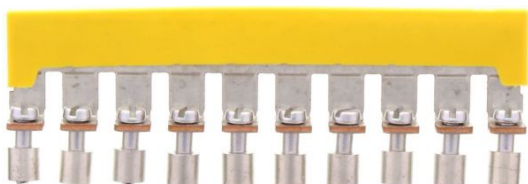
1578.6

RK 6-10/35 GR

RK 6-10/35 GR

Accessories

Insulated cross connector



Insulated cross-connector, No. of poles: 10, Mounting type: Can be screwed on, Width: 78.4 mm, Colour: Yellow

In general

Order number	Article designation	GTIN (EAN)	Packaging unit
2753.2	QI 10	4044211054892	10 PC



Insulated cross-connector, No. of poles: 2, Mounting type: Can be screwed on, Width: 13.6 mm, Colour: Yellow

In general

Order number	Article designation	GTIN (EAN)	Packaging unit
2750.2	QI 2	4044211054861	50 PC

1578.6

RK 6-10/35 GR

RK 6-10/35 GR

Accessories

Insulated cross connector



Insulated cross-connector, No. of poles: 3, Mounting type: Can be screwed on, Width: 21.7 mm, Colour: Yellow

In general

Order number	Article designation	GTIN (EAN)	Packaging unit
2751.2	QI 3	4044211054878	50 PC



Insulated cross-connector, No. of poles: 4, Mounting type: Can be screwed on, Width: 28.8 mm, Colour: Yellow

In general

Order number	Article designation	GTIN (EAN)	Packaging unit
2752.2	QI 4	4044211054885	20 PC

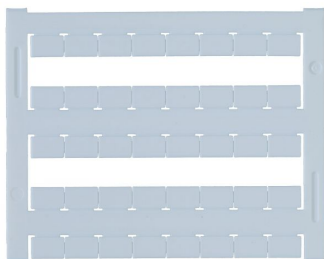
1578.6

RK 6-10/35 GR

RK 6-10/35 GR

Accessories

Quick-marking



Terminal marker / Pocket Maxicard, Length: 5 mm,
Width: 8 mm, Colour: White

In general

Order number	Article designation	GTIN (EAN)	Packaging unit
9323.7	PMC SB 8/40 WH	4044211129231	400 PC

Screw driver



Screwdriver with bare blade, Colour: Black-grey

In general

Order number	Article designation	GTIN (EAN)	Packaging unit
1087.0	SDB 0,8x4,0	4044211014803	1 PC

1578.6

RK 6-10/35 GR

RK 6-10/35 GR

Accessories

Test adapter



Test adapter, Length: 37.3 mm, Pitch size: 8 mm,
Colour: Beige

In general

Order number	Article designation	GTIN (EAN)	Packaging unit
2817.0	TA 8/1/ST	4044211055431	10 PC

Insulation plate



Insulation plate, Colour: Beige

In general

Order number	Article designation	GTIN (EAN)	Packaging unit
2003.2	TRS 1	4044211048068	100 PC

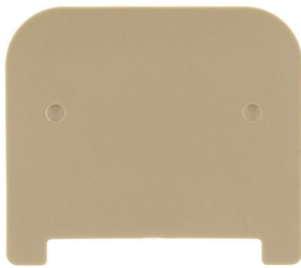
1578.6

RK 6-10/35 GR

RK 6-10/35 GR

Accessories

Partition plate



Partition plate, Width: 1.5 mm, Colour: Beige

In general

Order number	Article designation	GTIN (EAN)	Packaging unit
2002.2	TW 2,5-10	4044211048044	50 PC
