

1485.2

RK 240 Ex BG

RK 240 Ex BG



Ex feed-through terminal ATEX-certified, Screw connection, Mounting type: Mounting rail TS 35/7.5 and TS 32, Rated cross-section: 240 mm², Width: 36 mm, Colour: Beige

Business data

Product description	Ex feed-through terminal ATEX-certified
Explosion-proof version (EEx e)	✓
Packaging unit	5
Quantity unit	PC
Weight per piece (not including packaging)	352.4
Weight per piece (including packaging)	373.6
Unit of weight	G
Customs number	85369010
Country of origin	DE

© CONTA-CLIP Verbindungstechnik GmbH | Otto-Hahn-Str. 7 | D-33161 Hövelhof
 Fon +49 (0) 52 57.98 33-0 | Fax +49 (0) 52 57.98 33-33 | E-Mail info@conta-clip.de | conta-clip.de

Creation date 24.02.2021 01:07:10
 Subject to technical modifications

1485.2

RK 240 Ex BG

RK 240 Ex BG

Technical Data

Dimensions

Length	93 mm
--------	-------

Width	36 mm
-------	-------

Height TS 35/7.5	126.3 mm
------------------	----------

Height TS 32	132 mm
--------------	--------

Ratings

Rated voltage	1000 V
---------------	--------

Rated current	380 A
---------------	-------

Rated cross-section	240 mm ²
---------------------	---------------------

Rated impulse voltage	8 kV
-----------------------	------

Overvoltage category	III
----------------------	-----

Contamination degree	3
----------------------	---

1485.2

RK 240 Ex BG

RK 240 Ex BG

Technical Data

Connection data

Connection principle	Screw connection
Connection position	Lateral
Connections	2
Number of terminals per level	2
Number of levels	1
Wire cross-section single-core (rigid) / stranded, min.	50 mm ²
Wire cross-section single core (rigid)/stranded, max.	240 mm ²
Wire cross-section stranded, min.	35 mm ²
Wire cross-section stranded, max.	150 mm ²
Wire cross-section stranded with wire-end ferrules, min.	70 mm ²
Wire cross-section stranded with wire-end ferrules, max.	240 mm ²
Wire cross-section AWG, min.	2/0
Wire cross-section AWG, max.	500 Kcmil
Stripping length	38 mm
Screw head	Inner hex (Allen)
Screw threading	M 10
Tightening torque, min.	10 Nm
Tightening torque, max.	20 Nm

1485.2

RK 240 Ex BG

RK 240 Ex BG

Technical Data

Materials

Insulation housing	Polyamide 6.6
--------------------	---------------

Flammability class UL 94	V-2
--------------------------	-----

Working temperature, min.	-40 °C
---------------------------	--------

Working temperature, max.	105 °C
---------------------------	--------

Further technical data

Mounting type	Mounting rail TS 35/7.5 and TS 32
---------------	-----------------------------------

Gauge plug acc. to EN 60 947-1	B16
--------------------------------	-----

1485.2

RK 240 Ex BG

RK 240 Ex BG

Approvals

Standards and regulations

Partial certification number	TÜV ATEX 7092 U
------------------------------	-----------------

EAC approval	TR ZU 004/2011
--------------	----------------

EAC approval granted	✓
----------------------	---

CSA approval

CSA approval	C22.2 No 158
--------------	--------------

CSA approval granted	✓
----------------------	---

CSA Usegroup C: rated voltage	600 V
-------------------------------	-------

CSA Usegroup C: rated current	370 A
-------------------------------	-------

CSA wire cross-section AWG, min.	2/0
----------------------------------	-----

CSA wire cross-section AWG, max.	500 Kcmil
----------------------------------	-----------

CSA stripping length	38 mm
----------------------	-------

1485.2

RK 240 Ex BG

RK 240 Ex BG

Approvals

CSAus approval

CSAus approval	UL 1059
CSAus approval granted	✓
CSAus Usegroup C: rated voltage	600 V
CSAus Usegroup C: rated current	370 A
CSAus wire cross-section AWG, min.	2/0
CSAus wire cross-section AWG, max.	500 Kcmil
CSAus stripping length	38 mm

German Lloyd approval

GL approval	IEC 60947-7-1
GL approval granted	✓
GL rated voltage	600 V
GL rated current	370 A
GL rated cross-section	240 mm ²
GL environmental category	C

1485.2

RK 240 Ex BG

RK 240 Ex BG

Approvals

KEMA KEUR approval

KEMA KEUR approval	EN 60947-7-1
KEMA KEUR approval granted	✓
KEMA rated voltage	1000 V
KEMA rated current	415 A
KEMA rated impulse voltage	12 kV
KEMA wire cross-section single core (rigid), min.	50 mm ²
KEMA wire cross-section single-core (rigid), max.	240 mm ²
KEMA wire cross-section stranded, min.	70 mm ²
KEMA wire cross-section stranded, max.	240 mm ²
KEMA stripping length	38 mm
KEMA torque, min.	14 Nm
KEMA torque, max.	20 Nm

1485.2

RK 240 Ex BG

RK 240 Ex BG

Approvals

UL Recognized

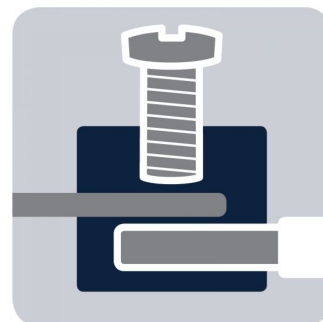
UL Recognized	UL 1059
UL Recognized granted	✓
UL Usegroup B: rated voltage	600 V
UL Usegroup B: rated current	370 A
UL Usegroup C: rated voltage	600 V
UL Usegroup C: rated current	370 A
UL wire cross-section single-core (rigid) AWG, min.	2/0
UL wire cross-section single-core (rigid) AWG, max.	500 Kcmil
UL wire cross-section stranded AWG, min.	2/0
UL wire cross-section stranded AWG, max.	500 Kcmil
UL torque	142 Lb In
UL wire material	Cu
UL factory wiring	✓

1485.2

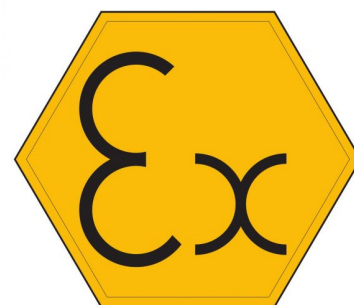
RK 240 Ex BG

RK 240 Ex BG

Media



M10



EAC

1485.2

RK 240 Ex BG

RK 240 Ex BG

Media



1485.2

RK 240 Ex BG

RK 240 Ex BG

Accessories

Cover

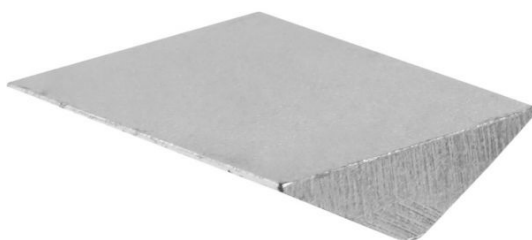


Cover, Length: 60 mm, Width: 25.5 mm, Colour: Yellow

In general

Order number	Article designation	GTIN (EAN)	Packaging unit
2808.0	AD 1/240/B	4044211055370	20 PC

Insertion profile



Inlay plate, Colour: natural

In general

Order number	Article designation	GTIN (EAN)	Packaging unit
2360.0	EP 240	4044211051495	10 PC

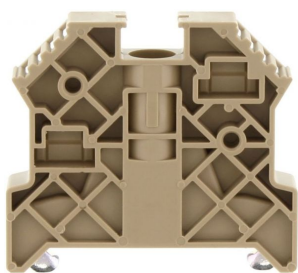
1485.2

RK 240 Ex BG

RK 240 Ex BG

Accessories

End bracket



End stop, Mounting type: Mounting rail TS 35/7.5,
Width: 9.5 mm, Colour: Beige

In general

Order number	Article designation	GTIN (EAN)	Packaging unit
2828.0	ES 35/K/ST	4044211055547	50 PC

Allan key



Inner hex key with bare blade

In general

Order number	Article designation	GTIN (EAN)	Packaging unit
2773.0	ISKS 8	4044211055035	1 PC

1485.2

RK 240 Ex BG

RK 240 Ex BG

Accessories

Measurement pick-off terminal

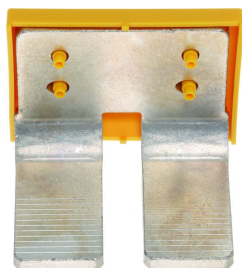


Measurement pick-off terminal, Screw connection, Mounting type: On base, Rated cross-section: 10 mm², Width: 10 mm, Colour: Beige

In general

Order number	Article designation	GTIN (EAN)	Packaging unit
1125.2	MAG 150/240	4044211080921	10 PC

Insulated cross connector



External insulated cross-connector, No. of poles: 2, Mounting type: Plug in, Width: 66.28 mm, Rated current: 380 A; Colour: Yellow

In general

Order number	Article designation	GTIN (EAN)	Packaging unit
2769.2	AQI 2/240	4044211054991	5 PC

1485.2

RK 240 Ex BG

RK 240 Ex BG

Accessories

Insulated cross connector

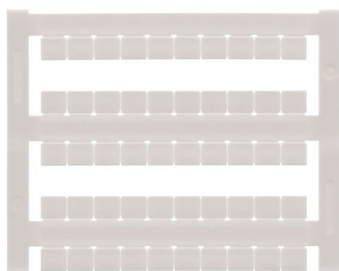


External insulated cross-connector, No. of poles: 3, Mounting type: Plug in, Width: 103.12 mm, Rated current: 380 A; Colour: Yellow

In general

Order number	Article designation	GTIN (EAN)	Packaging unit
2770.2	AQI 3/240	4044211055004	5 PC

Quick-marking



Terminal marker / Pocket Maxicard, Length: 5 mm, Width: 6 mm, Colour: White

In general

Order number	Article designation	GTIN (EAN)	Packaging unit
4702.7	PMC SB 6/50 WH	4044211089986	500 PC
