

1473.2

RK 50 Ex BG

RK 50 Ex BG



Ex feed-through terminal ATEX-certified, Screw connection, Mounting type: Mounting rail TS 35/7.5 and TS 32, Rated cross-section: 50 mm², Width: 20 mm, Colour: Beige

Business data

Product description	Ex feed-through terminal ATEX-certified
Explosion-proof version (EEx e)	✓
Packaging unit	10
Quantity unit	PC
Weight per piece (not including packaging)	113
Weight per piece (including packaging)	123.6
Unit of weight	G
Customs number	85369010
Country of origin	DE

© CONTA-CLIP Verbindungstechnik GmbH | Otto-Hahn-Str. 7 | D-33161 Hövelhof
 Fon +49 (0) 52 57.98 33-0 | Fax +49 (0) 52 57.98 33-33 | E-Mail info@conta-clip.de | conta-clip.de

Creation date 24.02.2021 01:07:06
 Subject to technical modifications

1473.2

RK 50 Ex BG

RK 50 Ex BG

Technical Data

Dimensions

Length	79 mm
Width	20 mm
Height TS 35/7.5	76.5 mm
Height TS 32	82 mm

Ratings

Rated voltage	800 V
Rated current	150 A
Rated cross-section	50 mm ²
Rated impulse voltage	8 kV
Overvoltage category	III
Contamination degree	3

1473.2

RK 50 Ex BG

RK 50 Ex BG

Technical Data

Connection data

Connection principle	Screw connection
Connection position	Lateral
Connections	2
Number of terminals per level	2
Number of levels	1
Wire cross-section single-core (rigid) / stranded, min.	10 mm ²
Wire cross-section single core (rigid)/stranded, max.	50 mm ²
Wire cross-section stranded, min.	16 mm ²
Wire cross-section stranded, max.	50 mm ²
Wire cross-section stranded with wire-end ferrules, min.	16 mm ²
Wire cross-section stranded with wire-end ferrules, max.	50 mm ²
Wire cross-section AWG, min.	6
Wire cross-section AWG, max.	1/0
Stripping length	27 mm
Screw head	Inner hex (Allen)
Screw threading	M 6
Tightening torque, min.	3 Nm
Tightening torque, max.	6 Nm

1473.2

RK 50 Ex BG

RK 50 Ex BG

Technical Data

Materials

Insulation housing	Polyamide 6.6
--------------------	---------------

Flammability class UL 94	V-2
--------------------------	-----

Working temperature, min.	-40 °C
---------------------------	--------

Working temperature, max.	105 °C
---------------------------	--------

Further technical data

Mounting type	Mounting rail TS 35/7.5 and TS 32
---------------	-----------------------------------

Gauge plug acc. to EN 60 947-1	B10
--------------------------------	-----

1473.2

RK 50 Ex BG

RK 50 Ex BG

Approvals

Standards and regulations

Partial certification number	TÜV ATEX 7092 U
EAC approval	TR ZU 004/2011
EAC approval granted	✓

CSA approval

CSA approval	C22.2 No 158
CSA approval granted	✓
CSA Usegroup C: rated voltage	600 V
CSA Usegroup C: rated current	150 A
CSA wire cross-section AWG, min.	6
CSA wire cross-section AWG, max.	1/0
CSA stripping length	27 mm

1473.2

RK 50 Ex BG

RK 50 Ex BG

Approvals

CSAus approval

CSAus approval	UL 1059
CSAus approval granted	✓
CSAus Usegroup C: rated voltage	600 V
CSAus Usegroup C: rated current	150 A
CSAus wire cross-section AWG, min.	6
CSAus wire cross-section AWG, max.	1/0
CSAus stripping length	27 mm

German Lloyd approval

GL approval	IEC 60947-7-1
GL approval granted	✓
GL rated voltage	600 V
GL rated current	150 A
GL rated cross-section	50 mm ²
GL environmental category	C

1473.2

RK 50 Ex BG

RK 50 Ex BG

Approvals

KEMA KEUR approval

KEMA KEUR approval	EN 60947-7-1
KEMA KEUR approval granted	✓
KEMA rated voltage	1000 V
KEMA rated current	150 A
KEMA rated impulse voltage	8 kV
KEMA wire cross-section single core (rigid), min.	16 mm ²
KEMA wire cross-section single-core (rigid), max.	50 mm ²
KEMA wire cross-section stranded, min.	25 mm ²
KEMA wire cross-section stranded, max.	50 mm ²

1473.2

RK 50 Ex BG

RK 50 Ex BG

Approvals

UL Recognized

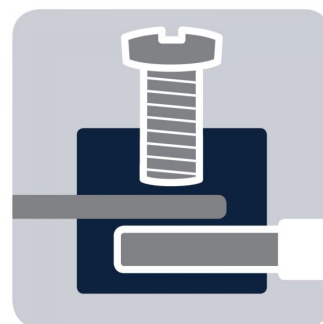
UL Recognized	UL 1059
UL Recognized granted	✓
UL Usegroup B: rated voltage	600 V
UL Usegroup B: rated current	150 A
UL Usegroup C: rated voltage	600 V
UL Usegroup C: rated current	150 A
UL wire cross-section single-core (rigid) AWG, min.	6
UL wire cross-section single-core (rigid) AWG, max.	1/0
UL wire cross-section stranded AWG, min.	6
UL wire cross-section stranded AWG, max.	1/0
UL torque	35 Lb In
UL wire material	Cu
UL factory wiring	✓

1473.2

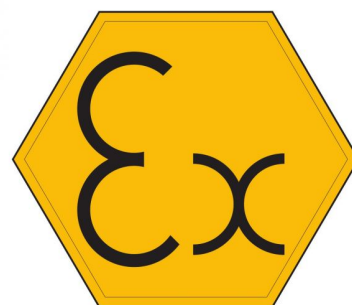
RK 50 Ex BG

RK 50 Ex BG

Media



M6



EAC

1473.2

RK 50 Ex BG

RK 50 Ex BG

Media



1473.2

RK 50 Ex BG

RK 50 Ex BG

Accessories

Cover



Cover, Length: 50 mm, Width: 10 mm, Colour: Yellow

In general

Order number	Article designation	GTIN (EAN)	Packaging unit
2810.0	AD 1/50/B	4044211055387	20 PC

Insertion profile



Inlay plate, Colour: natural

In general

Order number	Article designation	GTIN (EAN)	Packaging unit
2274.0	EP 50	4044211050818	10 PC

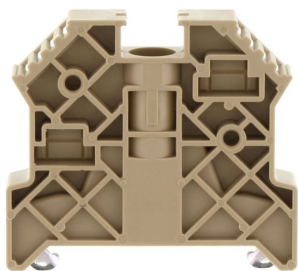
1473.2

RK 50 Ex BG

RK 50 Ex BG

Accessories

End bracket



End stop, Mounting type: Mounting rail TS 35/7.5,
Width: 9.5 mm, Colour: Beige

In general

Order number	Article designation	GTIN (EAN)	Packaging unit
2828.0	ES 35/K/ST	4044211055547	50 PC

Allan key



Inner hex key with bare blade

In general

Order number	Article designation	GTIN (EAN)	Packaging unit
2818.0	ISKS 5	4044211055448	1 PC

1473.2

RK 50 Ex BG

RK 50 Ex BG

Accessories

Measurement pick-off terminal



Measurement pick-off terminal, Screw connection,
Mounting type: On base, Rated cross-section: 10 mm²,
Width: 10 mm, Colour: Beige

In general

Order number	Article designation	GTIN (EAN)	Packaging unit
1121.2	MAG 50	4044211080914	10 PC

Insulated cross connector



External insulated cross-connector, No. of poles: 2,
Mounting type: Plug in, Width: 36.44 mm, Rated
current: 150 A; Colour: Yellow

In general

Order number	Article designation	GTIN (EAN)	Packaging unit
2763.2	AQI 2/50	4044211054939	5 PC

1473.2

RK 50 Ex BG

RK 50 Ex BG

Accessories

Insulated cross connector

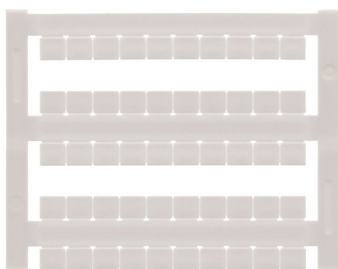


External insulated cross-connector, No. of poles: 3, Mounting type: Plug in, Width: 57.04 mm, Rated current: 150 A; Colour: Yellow

In general

Order number	Article designation	GTIN (EAN)	Packaging unit
2764.2	AQI 3/50	4044211054946	5 PC

Quick-marking



Terminal marker / Pocket Maxicard, Length: 5 mm, Width: 6 mm, Colour: White

In general

Order number	Article designation	GTIN (EAN)	Packaging unit
4702.7	PMC SB 6/50 WH	4044211089986	500 PC
