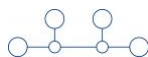
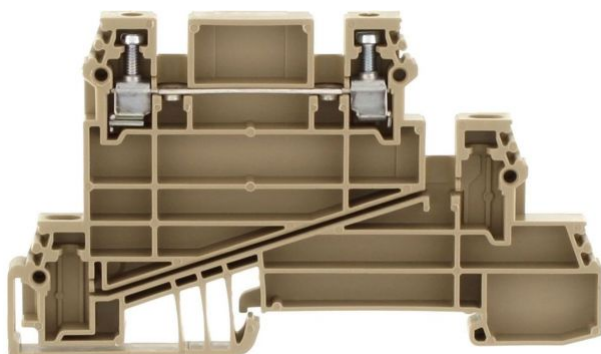


1423.2

DLI 2,5 L BG

DLI 2,5 L BG



EAC



M2.5



Three-wire installation terminal, Screw connection, Mounting type: Mounting rail TS 35/7.5, Rated cross-section: 2.5 mm², Width: 6 mm, Colour: Beige

Business data

| | |
|--|-----------------------------------|
| Product description | Three-wire installation terminals |
| Packaging unit | 50 |
| Quantity unit | PC |
| Weight per piece (not including packaging) | 10.8 |
| Weight per piece (including packaging) | 12.12 |
| Unit of weight | G |
| Customs number | 85369010 |
| Country of origin | DE |

1423.2

DLI 2,5 L BG

DLI 2,5 L BG

Technical Data

Dimensions

| | |
|------------------|---------|
| Length | 90.5 mm |
| Width | 6 mm |
| Height TS 35/7.5 | 53 mm |

Ratings

| | |
|-----------------------|---------------------|
| Rated voltage | 400 V |
| Rated current | 24 A |
| Rated cross-section | 2.5 mm ² |
| Rated impulse voltage | 4 kV |
| Overvoltage category | III |
| Contamination degree | 3 |

1423.2

DLI 2,5 L BG

DLI 2,5 L BG

Technical Data

Connection data

| | |
|--|---------------------|
| Connection principle | Screw connection |
| Connection position | Lateral |
| Connections | 2 |
| Number of potentials | 1 |
| Wire cross-section single-core (rigid) / stranded, min. | 0.2 mm ² |
| Wire cross-section single core (rigid)/stranded, max. | 4 mm ² |
| Wire cross-section stranded, min. | 0.2 mm ² |
| Wire cross-section stranded, max. | 4 mm ² |
| Wire cross-section stranded with wire-end ferrules, min. | 0.2 mm ² |
| Wire cross-section stranded with wire-end ferrules, max. | 2.5 mm ² |
| Wire cross-section AWG, min. | 22 |
| Wire cross-section AWG, max. | 14 |
| Stripping length | 8 mm |
| Screw head | Slotted |
| Screw threading | M 2,5 |
| Tightening torque, min. | 0.4 Nm |
| Tightening torque, max. | 0.8 Nm |

1423.2

DLI 2,5 L BG

DLI 2,5 L BG

Technical Data

Materials

| | |
|--------------------|---------------|
| Insulation housing | Polyamide 6.6 |
|--------------------|---------------|

| | |
|--------------------------|-----|
| Flammability class UL 94 | V-2 |
|--------------------------|-----|

| | |
|---------------------------|--------|
| Working temperature, min. | -40 °C |
|---------------------------|--------|

| | |
|---------------------------|--------|
| Working temperature, max. | 105 °C |
|---------------------------|--------|

Further technical data

| | |
|---------------|-------------------------|
| Mounting type | Mounting rail TS 35/7,5 |
|---------------|-------------------------|

| | |
|--------------------------------|----|
| Gauge plug acc. to EN 60 947-1 | A3 |
|--------------------------------|----|

| | |
|-------------------------------------|---|
| Number of cross-connection channels | 2 |
|-------------------------------------|---|

| | |
|--------------------|---|
| End plate required | ✓ |
|--------------------|---|

1423.2

DLI 2,5 L BG

DLI 2,5 L BG

Approvals

Standards and regulations

| | |
|--------------|----------------|
| EAC approval | TR ZU 004/2011 |
|--------------|----------------|

| | |
|----------------------|---|
| EAC approval granted | ✓ |
|----------------------|---|

CSA approval

| | |
|--------------|--------------|
| CSA approval | C22.2 No 158 |
|--------------|--------------|

| | |
|----------------------|---|
| CSA approval granted | ✓ |
|----------------------|---|

| | |
|-------------------------------|-------|
| CSA Usegroup B: rated voltage | 300 V |
|-------------------------------|-------|

| | |
|-------------------------------|------|
| CSA Usegroup B: rated current | 15 A |
|-------------------------------|------|

| | |
|----------------------------------|----|
| CSA wire cross-section AWG, min. | 22 |
|----------------------------------|----|

| | |
|----------------------------------|----|
| CSA wire cross-section AWG, max. | 14 |
|----------------------------------|----|

| | |
|----------------------|------|
| CSA stripping length | 8 mm |
|----------------------|------|

CSAus approval

| | |
|----------------|---------|
| CSAus approval | UL 1059 |
|----------------|---------|

| | |
|------------------------|---|
| CSAus approval granted | ✓ |
|------------------------|---|

| | |
|---------------------------------|-------|
| CSAus Usegroup B: rated voltage | 300 V |
|---------------------------------|-------|

| | |
|---------------------------------|------|
| CSAus Usegroup B: rated current | 15 A |
|---------------------------------|------|

| | |
|------------------------------------|----|
| CSAus wire cross-section AWG, min. | 22 |
|------------------------------------|----|

1423.2

DLI 2,5 L BG

DLI 2,5 L BG

Approvals

CSAus approval

CSAus wire cross-section AWG, max.

14

CSAus stripping length

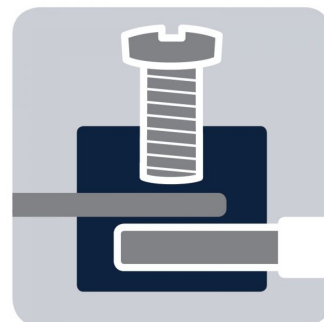
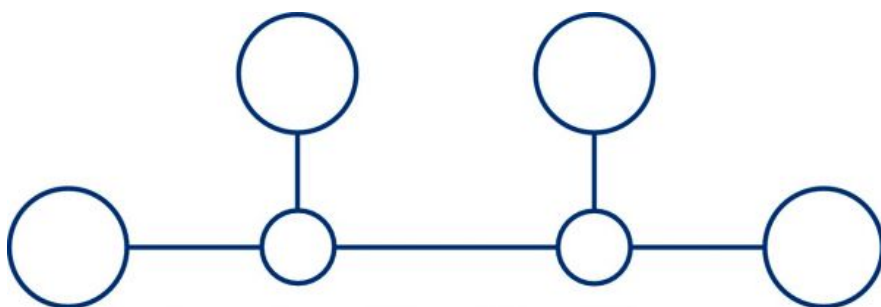
8 mm

1423.2

DLI 2,5 L BG

DLI 2,5 L BG

Media



M2.5



ERC

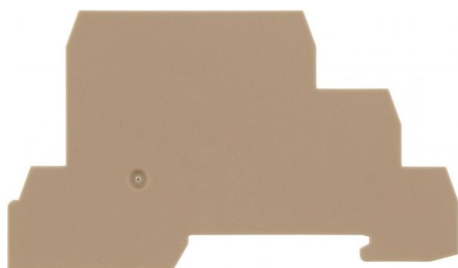
1423.2

DLI 2,5 L BG

DLI 2,5 L BG

Accessories

End plate

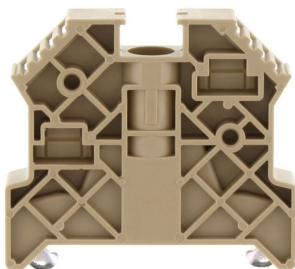


End plate, Width: 1.5 mm, Colour: Beige

In general

| Order number | Article designation | GTIN (EAN) | Packaging unit |
|--------------|---------------------|---------------|----------------|
| 2831.2 | AP 2,5/D | 4044211055561 | 20 PC |

End bracket



End stop, Mounting type: Mounting rail TS 35/7.5,
Width: 9.5 mm, Colour: Beige

In general

| Order number | Article designation | GTIN (EAN) | Packaging unit |
|--------------|---------------------|---------------|----------------|
| 2828.0 | ES 35/K/ST | 4044211055547 | 50 PC |

1423.2

DLI 2,5 L BG

DLI 2,5 L BG

Accessories

Cross connector



Cross-connector, No. of poles: 82, Mounting type: Screwable, Width: 500 mm, Rated cross-section: 2.5 mm², Colour: natural

In general

| Order number | Article designation | GTIN (EAN) | Packaging unit |
|--------------|---------------------|---------------|----------------|
| 2154.0 | Q 0,5 m/82 Pole | 4044211049751 | 1 PC |



Cross-connector, No. of poles: 10, Mounting type: Can be screwed on, Width: 59.3 mm, Rated cross-section: 2.5 mm², Colour: natural

In general

| Order number | Article designation | GTIN (EAN) | Packaging unit |
|--------------|---------------------|---------------|----------------|
| 2835.0 | Q 10 | 4044211055608 | 10 PC |

1423.2

DLI 2,5 L BG

DLI 2,5 L BG

Accessories

Cross connector



Cross-connector, No. of poles: 2, Mounting type: Can be screwed on, Width: 10.5 mm, Rated cross-section: 2.5 mm², Colour: natural

In general

| Order number | Article designation | GTIN (EAN) | Packaging unit |
|--------------|---------------------|---------------|----------------|
| 2832.0 | Q 2 | 4044211055578 | 50 PC |



Cross-connector, No. of poles: 20, Mounting type: Can be screwed on, Width: 120.3 mm, Rated cross-section: 2.5 mm², Colour: natural

In general

| Order number | Article designation | GTIN (EAN) | Packaging unit |
|--------------|---------------------|---------------|----------------|
| 2836.0 | Q 20 | 4044211055615 | 10 PC |

1423.2

DLI 2,5 L BG

DLI 2,5 L BG

Accessories

Cross connector



Cross-connector, No. of poles: 3, Mounting type: Can be screwed on, Width: 16.6 mm, Rated cross-section: 2.5 mm², Colour: natural

In general

| Order number | Article designation | GTIN (EAN) | Packaging unit |
|--------------|---------------------|---------------|----------------|
| 2833.0 | Q 3 | 4044211055585 | 50 PC |



Cross-connector, No. of poles: 4, Mounting type: Can be screwed on, Width: 22.7 mm, Rated cross-section: 2.5 mm², Colour: natural

In general

| Order number | Article designation | GTIN (EAN) | Packaging unit |
|--------------|---------------------|---------------|----------------|
| 2834.0 | Q 4 | 4044211055592 | 20 PC |

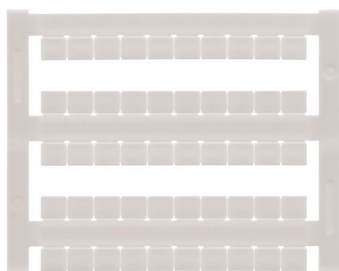
1423.2

DLI 2,5 L BG

DLI 2,5 L BG

Accessories

Quick-marking



Terminal marker / Pocket Maxicard, Length: 5 mm,
Width: 6 mm, Colour: White

In general

| Order number | Article designation | GTIN (EAN) | Packaging unit |
|--------------|---------------------|---------------|----------------|
| 4702.7 | PMC SB 6/50 WH | 4044211089986 | 500 PC |

Screw driver



Screwdriver with bare blade, Colour: Black-grey

In general

| Order number | Article designation | GTIN (EAN) | Packaging unit |
|--------------|---------------------|---------------|----------------|
| 1085.0 | SDB 0,5x3,0 | 4044211014643 | 1 PC |

1423.2

DLI 2,5 L BG

DLI 2,5 L BG

Accessories

Insulation plate



Insulation plate, Colour: Beige

In general

| Order number | Article designation | GTIN (EAN) | Packaging unit |
|--------------|---------------------|---------------|----------------|
| 2566.2 | TRS 3 | 4044211053567 | 100 PC |
