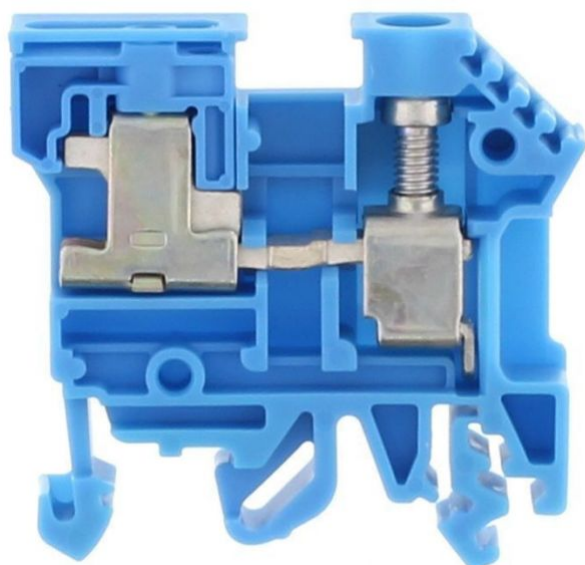


1217.5

NT 6-10 | 6x6 BU

NT 6-10 | 6x6 BU



M4



ERC

Neutral-disconnect terminal, Screw connection, Mounting type: Mounting rail TS 35/7.5 and TS 32, Rated cross-section: 10 mm², Width: 6 mm, Colour: Blue

Business data

Product description	Neutral disconnect terminal
Packaging unit	50
Quantity unit	PC
Weight per piece (not including packaging)	16
Weight per piece (including packaging)	18.02
Unit of weight	G
Customs number	85369010
Country of origin	DE

1217.5

NT 6-10 | 6x6 BU

NT 6-10 | 6x6 BU

Technical Data

Dimensions

Length	48 mm
Width	6 mm
Height TS 35/7.5	47 mm
Height TS 32	51.5 mm

Ratings

Rated voltage	400 V
Rated current	57 A
Rated cross-section	10 mm ²
Rated impulse voltage	4 kV
Overvoltage category	III
Contamination degree	3

1217.5

NT 6-10 | 6x6 BU

NT 6-10 | 6x6 BU

Technical Data

Connection data

Connection principle	Screw connection
Connection position	Lateral
Connections	1
Special connection	Sammelschiene 6 x 6 mm
Number of terminals per level	1
Number of levels	1
Wire cross-section single-core (rigid) / stranded, min.	0.2 mm ²
Wire cross-section single core (rigid)/stranded, max.	10 mm ²
Wire cross-section stranded, min.	0.2 mm ²
Wire cross-section stranded, max.	10 mm ²
Wire cross-section stranded with wire-end ferrules, min.	0.2 mm ²
Wire cross-section stranded with wire-end ferrules, max.	10 mm ²
Wire cross-section AWG, min.	22
Wire cross-section AWG, max.	10
Stripping length	12 mm
Screw head	Slotted
Screw threading	M 4
Tightening torque, min.	1.2 Nm
Tightening torque, max.	2 Nm

1217.5

NT 6-10 | 6x6 BU

NT 6-10 | 6x6 BU

Technical Data

Materials

Insulation housing	Polyamide 6.6
--------------------	---------------

Flammability class UL 94	V-2
--------------------------	-----

Working temperature, min.	-40 °C
---------------------------	--------

Working temperature, max.	105 °C
---------------------------	--------

Further technical data

Mounting type	Mounting rail TS 35/7.5 and TS 32
---------------	-----------------------------------

Gauge plug acc. to EN 60 947-1	A5
--------------------------------	----

End plate required	✓
--------------------	---

Version of lengthwise partition	Sliding
---------------------------------	---------

1217.5

NT 6-10 | 6x6 BU

NT 6-10 | 6x6 BU

Approvals

Standards and regulations

EAC approval	TR ZU 004/2011
--------------	----------------

EAC approval granted	✓
----------------------	---

KEMA KEUR approval

KEMA KEUR approval	EN 60947-7-1
--------------------	--------------

KEMA KEUR approval granted	✓
----------------------------	---

KEMA rated voltage	400 V
--------------------	-------

KEMA rated current	57 A
--------------------	------

KEMA rated impulse voltage	4 kV
----------------------------	------

KEMA wire cross-section single core (rigid), min.	0.2 mm ²
---	---------------------

KEMA wire cross-section single-core (rigid), max.	10 mm ²
---	--------------------

KEMA wire cross-section stranded, min.	0.2 mm ²
--	---------------------

KEMA wire cross-section stranded, max.	10 mm ²
--	--------------------

KEMA torque, min.	1.2 Nm
-------------------	--------

KEMA torque, max.	2 Nm
-------------------	------

KEMA torque busbar, min.	0.5 Nm
--------------------------	--------

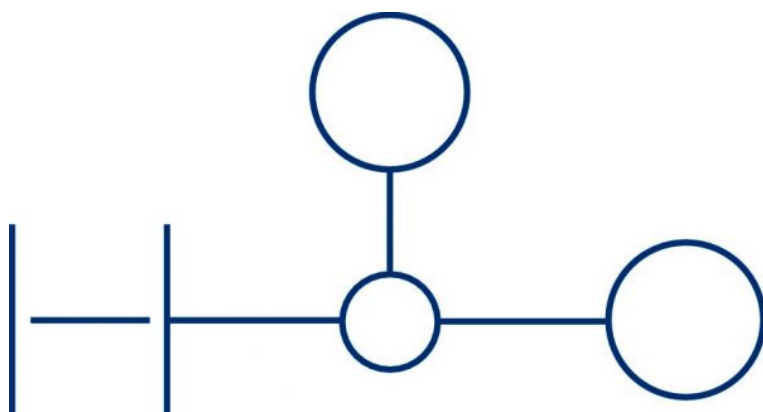
KEMA torque busbar, max.	1 Nm
--------------------------	------

1217.5

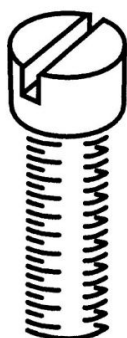
NT 6-10 | 6x6 BU

NT 6-10 | 6x6 BU

Media



M4



EAC



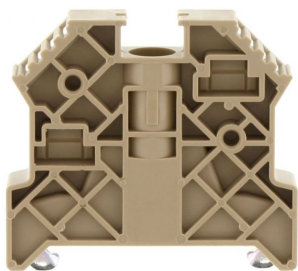
1217.5

NT 6-10 | 6x6 BU

NT 6-10 | 6x6 BU

Accessories

End bracket



End stop, Mounting type: Mounting rail TS 35/7.5,
Width: 9.5 mm, Colour: Beige

In general

Order number	Article designation	GTIN (EAN)	Packaging unit
2828.0	ES 35/K/ST	4044211055547	50 PC

Support bracket

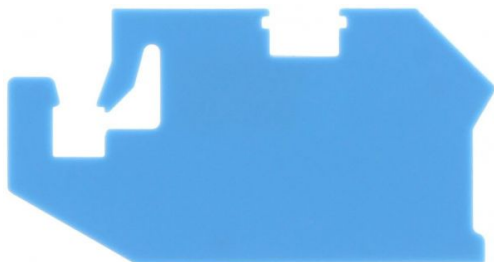


Plate for busbar, Colour: Blue

In general

Order number	Article designation	GTIN (EAN)	Packaging unit
2577.5	HP 6x6	4044211053710	20 PC

1217.5

NT 6-10 | 6x6 BU

NT 6-10 | 6x6 BU

Accessories

Test plug



Test plug, Colour: Red

In general

Order number	Article designation	GTIN (EAN)	Packaging unit
2007.0	PS 2,3	4044211048105	20 PC

Busbar



Busbar, Material: Copper, Colour: natural

In general

Order number	Article designation	GTIN (EAN)	Packaging unit
2131.0	Ssch 6x6 CU	4044211049508	1 M

1217.5

NT 6-10 | 6x6 BU

NT 6-10 | 6x6 BU

Accessories

Busbar

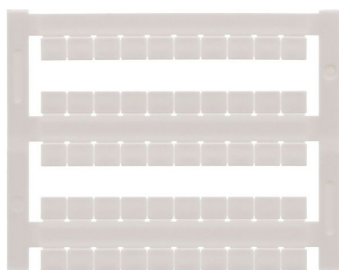


Busbar, Material: Brass, Colour: natural

In general

Order number	Article designation	GTIN (EAN)	Packaging unit
2132.0	Ssch 6x6 MS	4044211049515	1 M

Quick-marking



Terminal marker / Pocket Maxicard, Length: 5 mm,
Width: 6 mm, Colour: White

In general

Order number	Article designation	GTIN (EAN)	Packaging unit
4702.7	PMC SB 6/50 WH	4044211089986	500 PC

1217.5

NT 6-10 | 6x6 BU

NT 6-10 | 6x6 BU

Accessories

Screw driver



Screwdriver with bare blade, Colour: Black-grey

In general

Order number	Article designation	GTIN (EAN)	Packaging unit
1087.0	SDB 0,8x4,0	4044211014803	1 PC
