

## 1124.2 RK 150 BG RK 150 BG



Feed-through terminal, Screw connection, Mounting type: Mounting rail TS 35/7.5 and TS 32, Rated cross-section: 150 mm<sup>2</sup>, Width: 31 mm, Colour: Beige

### Business data

Product description	Feed-through terminal
Packaging unit	5
Quantity unit	PC
Weight per piece (not including packaging)	291.2
Weight per piece (including packaging)	312.4
Unit of weight	G
Customs number	85369010
Country of origin	DE

**1124.2**

**RK 150 BG**

**RK 150 BG**

## Technical Data

---

### Dimensions

---

Length	93 mm
--------	-------

Width	31 mm
-------	-------

Height TS 35/7.5	112.8 mm
------------------	----------

Height TS 32	118.5 mm
--------------	----------

### Ratings

---

Rated voltage	1000 V
---------------	--------

Rated current	309 A
---------------	-------

Rated cross-section	150 mm <sup>2</sup>
---------------------	---------------------

Rated impulse voltage	8 kV
-----------------------	------

Overvoltage category	III
----------------------	-----

Contamination degree	3
----------------------	---

1124.2

RK 150 BG

RK 150 BG

## Technical Data

---

### Connection data

Connection principle	Screw connection
Connection position	Lateral
Connections	2
Number of terminals per level	2
Number of levels	1
Wire cross-section single-core (rigid) / stranded, min.	35 mm <sup>2</sup>
Wire cross-section single core (rigid)/stranded, max.	150 mm <sup>2</sup>
Wire cross-section stranded, min.	50 mm <sup>2</sup>
Wire cross-section stranded, max.	150 mm <sup>2</sup>
Wire cross-section stranded with wire-end ferrules, min.	50 mm <sup>2</sup>
Wire cross-section stranded with wire-end ferrules, max.	150 mm <sup>2</sup>
Wire cross-section AWG, min.	2
Wire cross-section AWG, max.	300 Kcmil
Stripping length	38 mm
Screw head	Inner hex (Allen)
Screw threading	M 8
Tightening torque, min.	10 Nm
Tightening torque, max.	20 Nm

**1124.2**

**RK 150 BG**

**RK 150 BG**

## Technical Data

---

### Materials

---

Insulation housing	Polyamide 6.6
--------------------	---------------

Flammability class UL 94	V-2
--------------------------	-----

Working temperature, min.	-40 °C
---------------------------	--------

Working temperature, max.	105 °C
---------------------------	--------

### Further technical data

---

Mounting type	Mounting rail TS 35/7.5 and TS 32
---------------	-----------------------------------

Gauge plug acc. to EN 60 947-1	B14
--------------------------------	-----

Banded wire up to	20 x 8 mm
-------------------	-----------

1124.2

RK 150 BG

RK 150 BG

## Approvals

---

### Standards and regulations

---

EAC approval	TR ZU 004/2011
--------------	----------------

EAC approval granted	✓
----------------------	---

### CSA approval

---

CSA approval	C22.2 No 158
--------------	--------------

CSA approval granted	✓
----------------------	---

CSA Usegroup C: rated voltage	600 V
-------------------------------	-------

CSA Usegroup C: rated current	275 A
-------------------------------	-------

CSA wire cross-section AWG, min.	2
----------------------------------	---

CSA wire cross-section AWG, max.	300 Kcmil
----------------------------------	-----------

CSA stripping length	38 mm
----------------------	-------

### CSAus approval

---

CSAus approval	UL 1059
----------------	---------

CSAus approval granted	✓
------------------------	---

CSAus Usegroup C: rated voltage	600 V
---------------------------------	-------

CSAus Usegroup C: rated current	275 A
---------------------------------	-------

CSAus wire cross-section AWG, min.	2
------------------------------------	---

**1124.2**

**RK 150 BG**

**RK 150 BG**

## Approvals

---

### CSAus approval

---

CSAus wire cross-section AWG, max.	300 Kcmil
------------------------------------	-----------

CSAus stripping length	38 mm
------------------------	-------

---

### German Lloyd approval

---

GL approval	IEC 60947-7-1
-------------	---------------

GL approval granted	✓
---------------------	---

GL rated voltage	600 V
------------------	-------

GL rated current	275 A
------------------	-------

GL rated cross-section	150 mm <sup>2</sup>
------------------------	---------------------

GL environmental category	C
---------------------------	---

---

1124.2

RK 150 BG

RK 150 BG

## Approvals

---

### KEMA KEUR approval

KEMA KEUR approval	EN 60947-7-1
KEMA KEUR approval granted	✓
KEMA rated voltage	1000 V
KEMA rated current	309 A
KEMA rated impulse voltage	12 kV
KEMA wire cross-section single core (rigid), min.	35 mm <sup>2</sup>
KEMA wire cross-section single-core (rigid), max.	150 mm <sup>2</sup>
KEMA wire cross-section stranded, min.	35 mm <sup>2</sup>
KEMA wire cross-section stranded, max.	150 mm <sup>2</sup>
KEMA stripping length	38 mm
KEMA torque, min.	14 Nm
KEMA torque, max.	20 Nm

1124.2

RK 150 BG

RK 150 BG

## Approvals

---

### UL Recognized

UL Recognized	UL 1059
UL Recognized granted	✓
UL Usegroup B: rated voltage	600 V
UL Usegroup B: rated current	275 A
UL Usegroup C: rated voltage	600 V
UL Usegroup C: rated current	275 A
UL wire cross-section single-core (rigid) AWG, min.	2
UL wire cross-section single-core (rigid) AWG, max.	350 Kcmil
UL wire cross-section stranded AWG, min.	2
UL wire cross-section stranded AWG, max.	350 Kcmil
UL torque	142 Lb In
UL wire material	Cu
UL factory wiring	✓



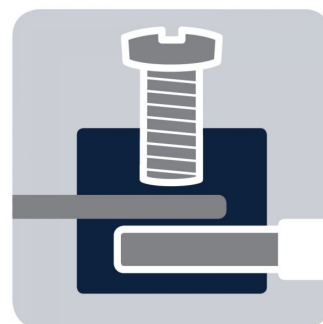
1124.2

RK 150 BG

RK 150 BG

Media

---



**M8**



**EAC**



1124.2

RK 150 BG

RK 150 BG

## Media

---



**1124.2**  
**RK 150 BG**  
**RK 150 BG**

## Accessories

---

### Cover

---



Cover, Length: 60 mm, Width: 21 mm, Colour: Yellow

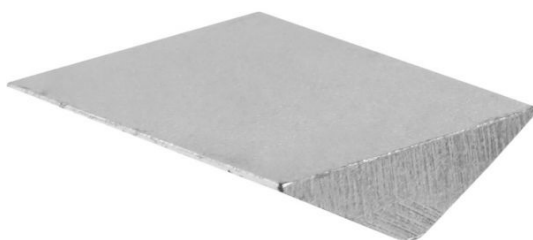
### In general

Order number	Article designation	GTIN (EAN)	Packaging unit
2806.0	AD 1/150/B	4044211055363	20 PC

---

### Insertion profile

---



Inlay plate, Colour: natural

### In general

Order number	Article designation	GTIN (EAN)	Packaging unit
2277.0	EP 150	4044211050849	10 PC

---

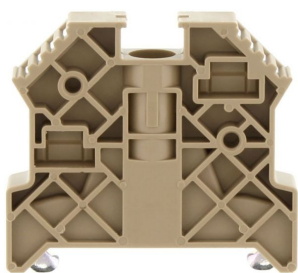
**1124.2**  
**RK 150 BG**  
**RK 150 BG**

## Accessories

---

### End bracket

---



End stop, Mounting type: Mounting rail TS 35/7.5,  
Width: 9.5 mm, Colour: Beige

### In general

Order number	Article designation	GTIN (EAN)	Packaging unit
2828.0	ES 35/K/ST	4044211055547	50 PC

---

### Allan key

---



Inner hex key with bare blade

### In general

Order number	Article designation	GTIN (EAN)	Packaging unit
2773.0	ISKS 8	4044211055035	1 PC

---

**1124.2**  
**RK 150 BG**  
**RK 150 BG**

## Accessories

---

### Measurement pick-off terminal

---



Measurement pick-off terminal, Screw connection,  
Mounting type: On base, Rated cross-section: 10 mm<sup>2</sup>,  
Width: 10 mm, Colour: Beige

### In general

Order number	Article designation	GTIN (EAN)	Packaging unit
1125.2	MAG 150/240	4044211080921	10 PC

---

### Insulated cross connector

---



External insulated cross-connector, No. of poles: 2,  
Mounting type: Plug in, Width: 56.13 mm, Rated  
current: 309 A; Colour: Yellow

### In general

Order number	Article designation	GTIN (EAN)	Packaging unit
2767.2	AQI 2/150	4044211054977	5 PC

---

1124.2

RK 150 BG

RK 150 BG

## Accessories

---

### Insulated cross connector

---



External insulated cross-connector, No. of poles: 3, Mounting type: Plug in, Width: 87.9 mm, Rated current: 309 A; Colour: Yellow

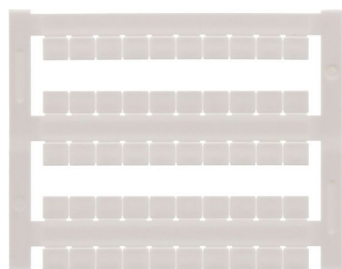
### In general

Order number	Article designation	GTIN (EAN)	Packaging unit
2768.2	AQI 3/150	4044211054984	5 PC

---

### Quick-marking

---



Terminal marker / Pocket Maxicard, Length: 5 mm, Width: 6 mm, Colour: White

### In general

Order number	Article designation	GTIN (EAN)	Packaging unit
4702.7	PMC SB 6/50 WH	4044211089986	500 PC

---