

1122.6
RK 95 GR
RK 95 GR



Feed-through terminal, Screw connection, Mounting type: Mounting rail TS 35/7.5 and TS 32, Rated cross-section: 95 mm², Width: 25 mm, Colour: Grey

Business data

Product description	Feed-through terminal
Packaging unit	10
Quantity unit	PC
Weight per piece (not including packaging)	179
Weight per piece (including packaging)	189.6
Unit of weight	G
Customs number	85369010
Country of origin	DE

1122.6 RK 95 GR RK 95 GR

Technical Data

Dimensions

Length	84 mm
Width	25 mm
Height TS 35/7.5	88.5 mm
Height TS 32	94 mm

Ratings

Rated voltage	1000 V
Rated current	232 A
Rated cross-section	95 mm ²
Rated impulse voltage	8 kV
Overvoltage category	III
Contamination degree	3

1122.6 RK 95 GR RK 95 GR

Technical Data

Connection data

Connection principle	Screw connection
Connection position	Lateral
Connections	2
Number of terminals per level	2
Number of levels	1
Wire cross-section single-core (rigid) / stranded, min.	25 mm ²
Wire cross-section single core (rigid)/stranded, max.	95 mm ²
Wire cross-section stranded, min.	25 mm ²
Wire cross-section stranded, max.	95 mm ²
Wire cross-section stranded with wire-end ferrules, min.	25 mm ²
Wire cross-section stranded with wire-end ferrules, max.	95 mm ²
Wire cross-section AWG, min.	2
Wire cross-section AWG, max.	4/0
Stripping length	30 mm
Screw head	Inner hex (Allen)
Screw threading	M 8
Tightening torque, min.	6 Nm
Tightening torque, max.	12 Nm

1122.6
RK 95 GR
RK 95 GR

Technical Data

Materials

Insulation housing	Polyamide 6.6
Flammability class UL 94	V-2
Working temperature, min.	-40 °C
Working temperature, max.	105 °C

Further technical data

Mounting type	Mounting rail TS 35/7.5 and TS 32
Gauge plug acc. to EN 60 947-1	B12
Banded wire up to	16,6 x 6,0 mm

1122.6
RK 95 GR
RK 95 GR

Approvals

Standards and regulations

EAC approval	TR ZU 004/2011
--------------	----------------

EAC approval granted	✓
----------------------	---

CSA approval

CSA approval	C22.2 No 158
--------------	--------------

CSA approval granted	✓
----------------------	---

CSA Usegroup C: rated voltage	600 V
-------------------------------	-------

CSA Usegroup C: rated current	230 A
-------------------------------	-------

CSA wire cross-section AWG, min.	2
----------------------------------	---

CSA wire cross-section AWG, max.	4/0
----------------------------------	-----

CSA stripping length	30 mm
----------------------	-------

CSAus approval

CSAus approval	UL 1059
----------------	---------

CSAus approval granted	✓
------------------------	---

CSAus Usegroup C: rated voltage	600 V
---------------------------------	-------

CSAus Usegroup C: rated current	230 A
---------------------------------	-------

CSAus wire cross-section AWG, min.	2
------------------------------------	---

1122.6
RK 95 GR
RK 95 GR

Approvals

CSAus approval

CSAus wire cross-section AWG, max.	4/0
CSAus stripping length	30 mm

German Lloyd approval

GL approval	IEC 60947-7-1
GL approval granted	✓
GL rated voltage	600 V
GL rated current	230 A
GL rated cross-section	95 mm ²
GL environmental category	C

1122.6
RK 95 GR
RK 95 GR

Approvals

KEMA KEUR approval

KEMA KEUR approval	EN 60947-7-1
KEMA KEUR approval granted	✓
KEMA rated voltage	1000 V
KEMA rated current	232 A
KEMA rated impulse voltage	12 kV
KEMA wire cross-section single core (rigid), min.	25 mm ²
KEMA wire cross-section single-core (rigid), max.	95 mm ²
KEMA wire cross-section stranded, min.	25 mm ²
KEMA wire cross-section stranded, max.	95 mm ²
KEMA stripping length	30 mm
KEMA torque, min.	8 Nm
KEMA torque, max.	12 Nm

1122.6
RK 95 GR
RK 95 GR

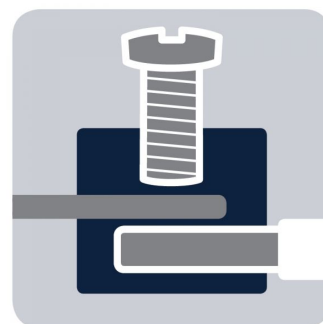
Approvals

UL Recognized

UL Recognized	UL 1059
UL Recognized granted	✓
UL Usegroup B: rated voltage	600 V
UL Usegroup B: rated current	230 A
UL Usegroup C: rated voltage	600 V
UL Usegroup C: rated current	230 A
UL wire cross-section single-core (rigid) AWG, min.	2
UL wire cross-section single-core (rigid) AWG, max.	4/0
UL wire cross-section stranded AWG, min.	2
UL wire cross-section stranded AWG, max.	4/0
UL torque	89 Lb In
UL wire material	Cu
UL factory wiring	✓

1122.6
RK 95 GR
RK 95 GR

Media



M8



EAC



1122.6
RK 95 GR
RK 95 GR

Media



1122.6
RK 95 GR
RK 95 GR

Accessories

Cover



Cover, Length: 59 mm, Width: 15 mm, Colour: Yellow

In general

Order number	Article designation	GTIN (EAN)	Packaging unit
2804.0	AD 1/95/B	4044211055356	20 PC

Insertion profile



Inlay plate, Colour: natural

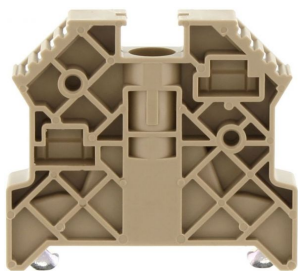
In general

Order number	Article designation	GTIN (EAN)	Packaging unit
2275.0	EP 95	4044211050825	10 PC

1122.6
RK 95 GR
RK 95 GR

Accessories

End bracket



End stop, Mounting type: Mounting rail TS 35/7.5,
Width: 9.5 mm, Colour: Beige

In general

Order number	Article designation	GTIN (EAN)	Packaging unit
2828.0	ES 35/K/ST	4044211055547	50 PC

Allan key



Inner hex key with bare blade

In general

Order number	Article designation	GTIN (EAN)	Packaging unit
2772.0	ISKS 6	4044211055028	1 PC

1122.6
RK 95 GR
RK 95 GR

Accessories

Measurement pick-off terminal

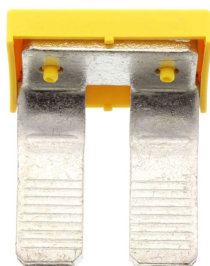


Measurement pick-off terminal, Screw connection,
Mounting type: On base, Rated cross-section: 10 mm²,
Width: 10 mm, Colour: Beige

In general

Order number	Article designation	GTIN (EAN)	Packaging unit
1123.2	MAG 95	4044211080938	10 PC

Insulated cross connector



External insulated cross-connector, No. of poles: 2,
Mounting type: Plug in, Width: 44.86 mm, Rated
current: 232 A; Colour: Yellow

In general

Order number	Article designation	GTIN (EAN)	Packaging unit
2765.2	AQI 2/95	4044211054953	5 PC

1122.6
RK 95 GR
RK 95 GR

Accessories

Insulated cross connector

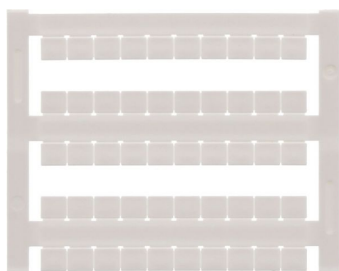


External insulated cross-connector, No. of poles: 3,
Mounting type: Plug in, Width: 70.44 mm, Rated
current: 232 A; Colour: Yellow

In general

Order number	Article designation	GTIN (EAN)	Packaging unit
2766.2	AQI 3/95	4044211054960	5 PC

Quick-marking



Terminal marker / Pocket Maxicard, Length: 5 mm,
Width: 6 mm, Colour: White

In general

Order number	Article designation	GTIN (EAN)	Packaging unit
4702.7	PMC SB 6/50 WH	4044211089986	500 PC
