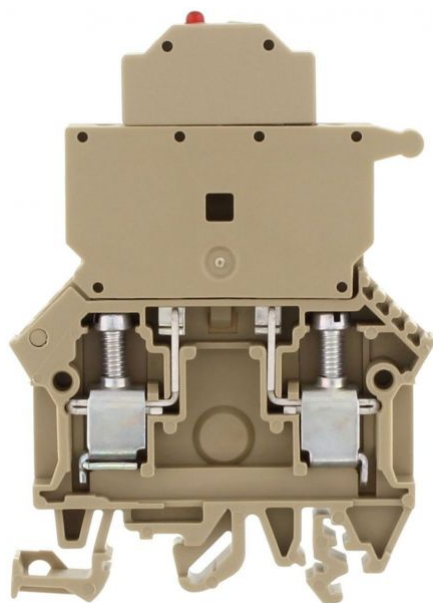


1106.2

SIK 10/LED(RD)/115V DC/230V AC BG

SIK 10/LED(RD)/115V DC/230V AC BG



Fuse-disconnect terminal, Screw connection, Mounting type: Mounting rail TS 35/7.5 and TS 32, Rated cross-section: 10 mm<sup>2</sup>, Width: 8 mm, Colour: Beige

## Business data

Product description	Fuse-disconnect terminal
Packaging unit	25
Quantity unit	PC
Weight per piece (not including packaging)	25.2
Weight per piece (including packaging)	27.8
Unit of weight	G
Customs number	85369010
Country of origin	DE

**1106.2**

**SIK 10/LED(RD)/115V DC/230V AC BG**

**SIK 10/LED(RD)/115V DC/230V AC BG**

## Technical Data

---

### Dimensions

---

Length	60 mm
--------	-------

Width	8 mm
-------	------

Height TS 35/7.5	87 mm
------------------	-------

Height TS 32	83 mm
--------------	-------

### Ratings

---

Rated voltage (determined by the illuminated display and fuse being used)	115 DC / 230 AC V
---	-------------------

Rated current (as fuse-disconnect terminal)	10 A
---	------

Rated cross-section	10 mm <sup>2</sup>
---------------------	--------------------

Rated impulse voltage	8 kV
-----------------------	------

Overvoltage category	III
----------------------	-----

Contamination degree	3
----------------------	---

**1106.2**

**SIK 10/LED(RD)/115V DC/230V AC BG**

**SIK 10/LED(RD)/115V DC/230V AC BG**

## Technical Data

---

### Connection data

Connection principle	Screw connection
Connection position	Lateral
Connections	2 / extraction lever
Number of terminals per level	2
Number of levels	1
Wire cross-section single-core (rigid) / stranded, min.	0.2 mm <sup>2</sup>
Wire cross-section single core (rigid)/stranded, max.	10 mm <sup>2</sup>
Wire cross-section stranded, min.	0.2 mm <sup>2</sup>
Wire cross-section stranded, max.	10 mm <sup>2</sup>
Wire cross-section stranded with wire-end ferrules, min.	0.2 mm <sup>2</sup>
Wire cross-section stranded with wire-end ferrules, max.	10 mm <sup>2</sup>
Wire cross-section AWG, min.	22
Wire cross-section AWG, max.	8
Stripping length	12 mm
Screw head	Slotted
Screw threading	M 4
Tightening torque, min.	1.2 Nm
Tightening torque, max.	2 Nm

**1106.2**

**SIK 10/LED(RD)/115V DC/230V AC BG**

**SIK 10/LED(RD)/115V DC/230V AC BG**

## Technical Data

---

### Materials

---

Insulation housing	Polyamide 6.6
Flammability class UL 94	V-2
Working temperature, min.	-40 °C
Working temperature, max.	105 °C

### Further technical data

---

Mounting type	Mounting rail TS 35/7.5 and TS 32
Fuse size	5 x 20 / 5 x 25 / 5 x 30 mm
Gauge plug acc. to EN 60 947-1	A5
End plate required	✓
Voltage fuse	250 V
Voltage illuminated display	115 DC / 230 AC V
Cross-current via illuminated display	< 5 mA
Version of fuse holder	Swivelling
Type of display element (defect display)	LED
Version of fuse cartridge	G fuse 5x20 / 5x25 / 5x30
Supply voltage (defect display), min.	115
Supply voltage (defect display), max.	230
Type of voltage (defect display)	AC/DC

**1106.2**

**SIK 10/LED(RD)/115V DC/230V AC BG**

**SIK 10/LED(RD)/115V DC/230V AC BG**

## Technical Data

---

### Further technical data

---

Colour of lamp

Red

---

1106.2

SIK 10/LED(RD)/115V DC/230V AC BG

SIK 10/LED(RD)/115V DC/230V AC BG

## Approvals

---

### Standards and regulations

---

EAC approval	TR ZU 004/2011
--------------	----------------

EAC approval granted	✓
----------------------	---

Nemko approval	EN 60947-7-3
----------------	--------------

Nemko approval granted	✓
------------------------	---

### cUL Recognized

---

cUL Recognized	C22.2 No 158
----------------	--------------

cUL Recognized	✓
----------------	---

cUL Usegroup B: rated voltage	115DC / 230AC V
-------------------------------	-----------------

cUL Usegroup B: rated current	10 A
-------------------------------	------

cUL Usegroup C: rated voltage	115DC / 230AC V
-------------------------------	-----------------

cUL Usegroup C: rated current	10 A
-------------------------------	------

cUL wire cross-section single-core (rigid) AWG, min.	22
--	----

cUL wire cross-section single-core (rigid) AWG, max.	12
--	----

cUL wire cross-section stranded AWG, min.	22
---	----

cUL wire cross-section stranded AWG, max.	12
---	----

cUL torque	16 Nm
------------	-------

cUL wire material	Cu
-------------------	----

**1106.2**

**SIK 10/LED(RD)/115V DC/230V AC BG**

**SIK 10/LED(RD)/115V DC/230V AC BG**

## Approvals

---

### German Lloyd approval

---

GL approval	IEC 60947-7-3
GL approval granted	✓
GL rated voltage	500 V
GL rated current	10 A
GL wire cross-section single core (rigid), min.	10 mm <sup>2</sup>

## 1106.2

SIK 10/LED(RD)/115V DC/230V AC BG

SIK 10/LED(RD)/115V DC/230V AC BG

### Approvals

---

#### KEMA KEUR approval

KEMA KEUR approval	EN 60947-7-3
KEMA KEUR approval granted	✓
KEMA rated voltage	500 V
KEMA voltage fuse, max.	250 V
KEMA rated current	10 A
KEMA rated impulse voltage	8 kV
KEMA wire cross-section single core (rigid), min.	2 mm <sup>2</sup>
KEMA wire cross-section single-core (rigid), max.	10 mm <sup>2</sup>
KEMA wire cross-section stranded, min.	2 mm <sup>2</sup>
KEMA wire cross-section stranded, max.	10 mm <sup>2</sup>
KEMA torque, min.	12 Nm
KEMA torque, max.	2 Nm
KEMA fuse size	5 x 20 / 5 x 25 / 5 x 30 mm
KEMA power loss in singular arrangement - overload and short-circuit protection, max.	2,5 / 6,3 W / A
KEMA power loss in compound arrangement - overload and short-circuit protection, max.	2,5 / 6,3 W / A
KEMA power loss in singular arrangement - only short-circuit protection, max.	4 / 10 W / A
KEMA power loss in compound arrangement - only short-circuit protection, max.	4 / 6,3 W / A



## 1106.2

SIK 10/LED(RD)/115V DC/230V AC BG

SIK 10/LED(RD)/115V DC/230V AC BG

### Approvals

---

#### UL Recognized

UL Recognized	UL 1059
UL Recognized granted	✓
UL Usegroup B: rated voltage	115 DC / 230 AC V
UL Usegroup B: rated current	10 A
UL Usegroup C: rated voltage	115 DC / 230 AC V
UL Usegroup C: rated current	10 A
UL wire cross-section single-core (rigid) AWG, min.	22
UL wire cross-section single-core (rigid) AWG, max.	12
UL wire cross-section stranded AWG, min.	22
UL wire cross-section stranded AWG, max.	12
UL torque	16 Lb In
UL wire material	Cu
UL factory wiring	✓
UL field wiring	✓

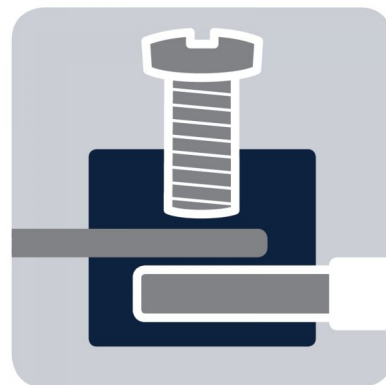
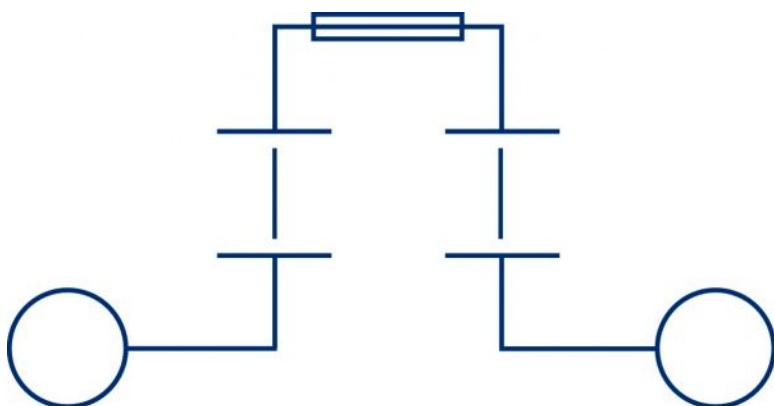
1106.2

SIK 10/LED(RD)/115V DC/230V AC BG

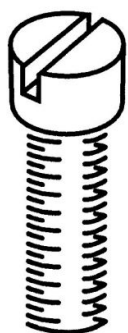
SIK 10/LED(RD)/115V DC/230V AC BG

## Media

---



**M4**



**EAC**



1106.2

SIK 10/LED(RD)/115V DC/230V AC BG

SIK 10/LED(RD)/115V DC/230V AC BG

Media

---



1106.2

SIK 10/LED(RD)/115V DC/230V AC BG

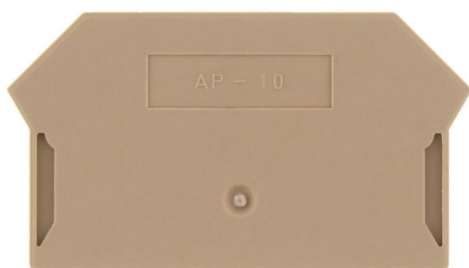
SIK 10/LED(RD)/115V DC/230V AC BG

## Accessories

---

### End plate

---



End plate, Width: 2 mm, Colour: Beige

### In general

Order number	Article designation	GTIN (EAN)	Packaging unit
2762.2	AP 10	4044211054922	20 PC

### External insulated cross-connector

---



External insulated cross-connector, No. of poles: 10, Mounting type: Plug in, Width: 80.9 mm, Rated current: 57 A; Colour: Yellow

### In general

Order number	Article designation	GTIN (EAN)	Packaging unit
3443.8	AQI 10/8/18	4044211137588	10 PC

1106.2

SIK 10/LED(RD)/115V DC/230V AC BG

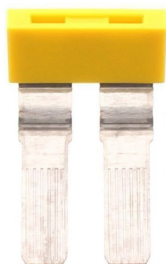
SIK 10/LED(RD)/115V DC/230V AC BG

## Accessories

---

### External insulated cross-connector

---

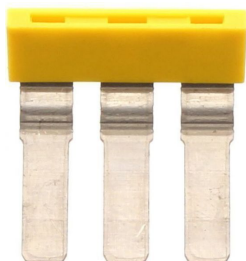


External insulated cross-connector, No. of poles: 2,  
Mounting type: Plug in, Width: 16.1 mm, Rated  
current: 57 A; Colour: Yellow

### In general

Order number	Article designation	GTIN (EAN)	Packaging unit
3440.8	AQI 2/8/18	4044211137540	50 PC

---



External insulated cross-connector, No. of poles: 3,  
Mounting type: Plug in, Width: 24.2 mm, Rated  
current: 57 A; Colour: Yellow

### In general

Order number	Article designation	GTIN (EAN)	Packaging unit
3441.8	AQI 3/8/18	4044211137557	50 PC

---

1106.2

SIK 10/LED(RD)/115V DC/230V AC BG

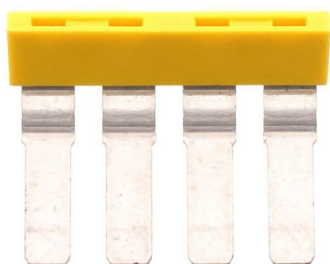
SIK 10/LED(RD)/115V DC/230V AC BG

## Accessories

---

### External insulated cross-connector

---



External insulated cross-connector, No. of poles: 4,  
Mounting type: Plug in, Width: 32.3 mm, Rated  
current: 57 A; Colour: Yellow

### In general

Order number	Article designation	GTIN (EAN)	Packaging unit
3442.8	AQI 4/8/18	4044211137564	50 PC

---



External insulated cross-connector, No. of poles: 60,  
Mounting type: Plug in, Rated current: 57 A; Colour:  
Yellow

### In general

Order number	Article designation	GTIN (EAN)	Packaging unit
3444.8	AQI 60/8/18	4044211137571	1 PC

---

1106.2

SIK 10/LED(RD)/115V DC/230V AC BG

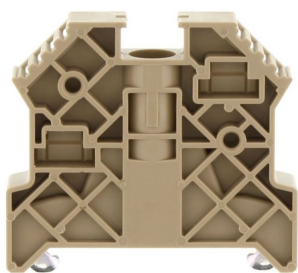
SIK 10/LED(RD)/115V DC/230V AC BG

## Accessories

---

### End bracket

---



End stop, Mounting type: Mounting rail TS 35/7.5,  
Width: 9.5 mm, Colour: Beige

### In general

Order number	Article designation	GTIN (EAN)	Packaging unit
2828.0	ES 35/K/ST	4044211055547	50 PC

---

### Contact sleeve

---



Solid link, Colour: natural

### In general

Order number	Article designation	GTIN (EAN)	Packaging unit
2470.0	KH 5	4044211052607	100 PC

---

1106.2

SIK 10/LED(RD)/115V DC/230V AC BG

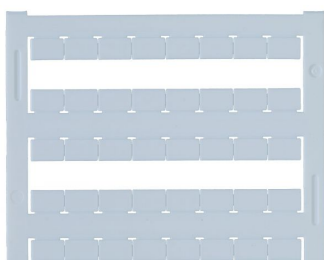
SIK 10/LED(RD)/115V DC/230V AC BG

## Accessories

---

## Quick-marking

---



Terminal marker / Pocket Maxicard, Length: 5 mm,  
Width: 8 mm, Colour: White

## In general

Order number	Article designation	GTIN (EAN)	Packaging unit
9323.7	PMC SB 8/40 WH	4044211129231	400 PC

---

## Screw driver

---



Screwdriver with bare blade, Colour: Black-grey

## In general

Order number	Article designation	GTIN (EAN)	Packaging unit
1087.0	SDB 0,8x4,0	4044211014803	1 PC

---