

MODEL 553

Undervoltage Control Relay

Re-Acceleration Relay

- On-Delay
- True-Off Delay
- LED Status Indicators



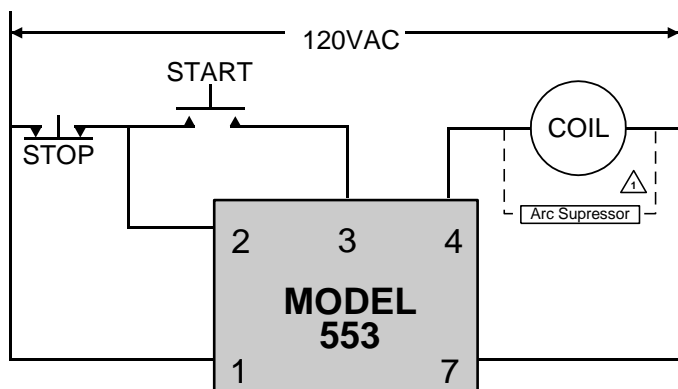
DESCRIPTION

The **Model 553 Re-Acceleration Relay** is designed to take the place of a voltage sensing relay and two time delay relays. When voltage is applied to the Model 553 and the external start switch is closed, the adjustable on-delay time begins. After the delay period, the contacts will close.

If the line voltage drops below 90 volts, the contacts open and the true-off delay begins. If the voltage rises above the pickup voltage before the true-off delay has elapsed, the contact will re-close.

If the voltage does not rise above the pickup voltage before the true-off delay time period ends, the contacts will remain open until the external start switch is closed.

TYPICAL APPLICATION



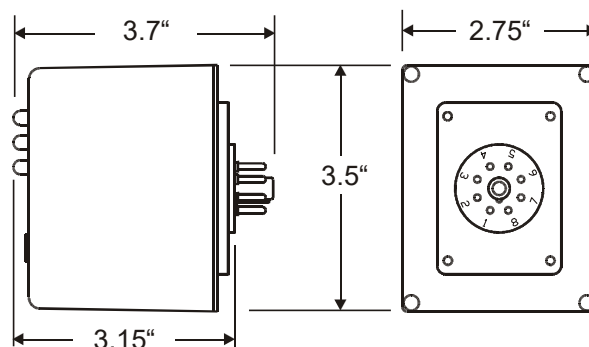
* diagram shows no power applied

SPECIFICATIONS

Model	553-01	553-02	553-03	553-04	553-05
Nominal Voltage	120VAC 50/60Hz				
Trip Point Drop Out	90VAC				
Trip Point Pick Up	105VAC	102VAC			
On Delay (Sec)	1-30	1-120	0.1- 40	0.5 -1.0	5 -300
True Off Delay (Sec)	1-10	1-10	1-10	0.1- 2.0	1-10
Power Consumption	5 watts typical				
Transient Protection	2500 VRMS for 10ms				
Repeat Accuracy	± 0.5% **				
Response Time	100ms **				
Dead Band	± 2%				
Contact Rating	10A at 120VAC resistive				
Expected Relay Life	Mech: 10 million operations Elec: 100,000 operations at rated load				
Operating Temp.	+14° to +122° F				
** @ Ambient Temp	70°F				
Humidity Tolerance	0 to 97% without condensation				
Enclosure Material	Polycarbonate				
Weight	10.5 oz.				
Mounting	8-pin socket *not included				
Agency Approval	CSA	No	No	No	No

* Order 8-pin socket number 51X120

DIMENSIONS



Telephone: Main - (918) 438-1220
Sales - (800) 862-2875
Fax: (918) 437-7584
E-mail: sales@time-mark.com
Internet: http://www.time-mark.com

SIGNALINE
DIV OF TIME MARK CORPORATION

11440 East Pine Street
Tulsa, Oklahoma 74116

12/2019
© 2019 TIME MARK CORPORATION

TIME MARK is a division of  AEMT, Inc.

MODEL 553 Re-Acceleration Relay

READ ALL INSTRUCTIONS BEFORE INSTALLING, OPERATING OR SERVICING THIS DEVICE.
KEEP THIS DATA SHEET FOR FUTURE REFERENCE.

GENERAL SAFETY

POTENTIALLY HAZARDOUS VOLTAGES ARE PRESENT AT THE TERMINALS OF THE MODEL 553.
ALL ELECTRICAL POWER SHOULD BE REMOVED WHEN CONNECTING OR DISCONNECTING WIRING.
THIS DEVICE SHOULD BE INSTALLED AND SERVICED BY QUALIFIED PERSONNEL.

Installation Instructions

INSTALLATION

The Model 553 Re-Acceleration Relay requires a standard 8-pin socket for mounting.

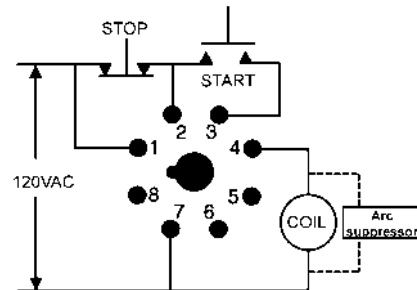
Mount the unit in a suitable enclosure. Refer to the Pin Diagram on this sheet, or on the unit, for terminal connections.

ADJUSTMENT

Adjust the ON DELAY to stagger restarts in a multiple unit system.

Adjust the TRUE OFF DELAY to the maximum time that the power can be off, and the system restarted.

PIN DIAGRAM

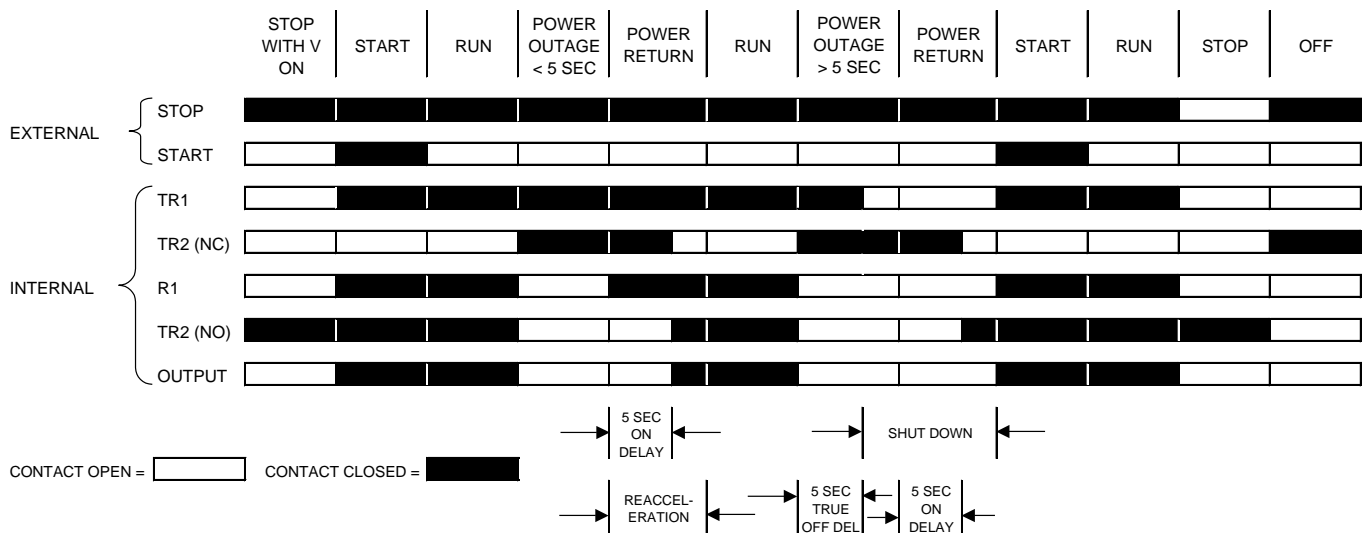


WARRANTY

This product is warranted to be free from defects in materials and workmanship, and is covered by our exclusive **5-year Unconditional Warranty**. Should this device fail to operate for any reason, we will repair it for five years from the date of manufacture. For complete warranty details, see the *Terms and Conditions of Sales* page in the front section of the Time Mark catalog or contact Time Mark at 1-800-862-2875.

OPERATION DIAGRAM

EXAMPLE SHOWN: Unit set for 5 seconds ON DELAY; 5 seconds TRUE OFF DELAY



Telephone: Main - (918) 438-1220
Sales - (800) 862-2875
Fax: (918) 437-7584
E-mail: sales@time-mark.com
Internet: http://www.time-mark.com

SIGNALINE
DIV OF TIME MARK CORPORATION

11440 East Pine Street
Tulsa, Oklahoma 74116
12/2019
© 2019 TIME MARK CORPORATION
TIME MARK is a division of AEMT, Inc.