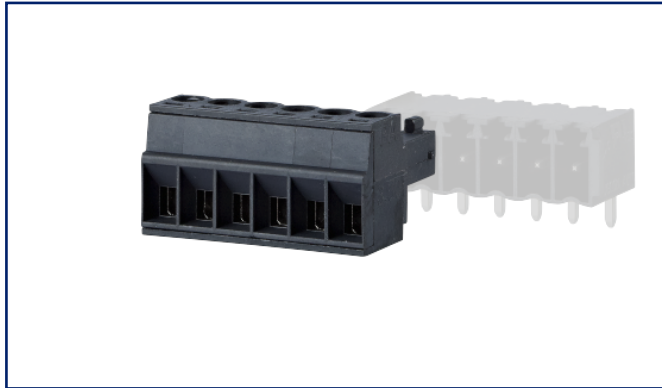
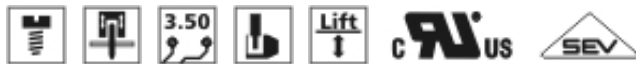
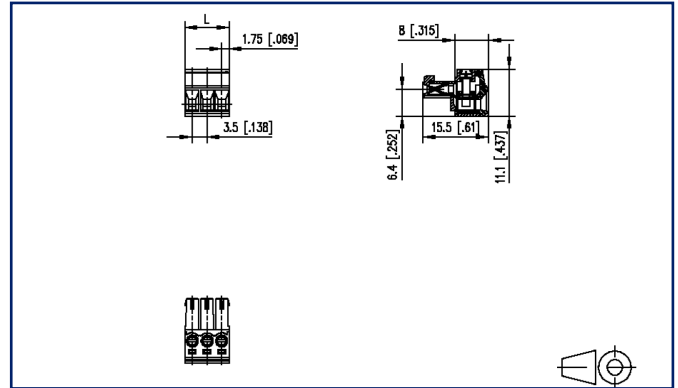


Data sheet
RP033xxVBLC Typ 339

Illustrations



Dimensional drawing



See enlarged drawings at the end of document



Product specification

- screw type terminal block, pluggable
- centerline 3.50 mm, direction of connection vertical 0°
- lift system, fittable without loss of poles
- color black
- wire entry codeable side perpendicular to plug direction

Technical Data

General Data			
Tightening torque SEV	0.25 Nm		
Tightening torque UL	2.2 lb-in		
min. number of poles	2		
max. number of poles	12		
Insulating material class	CTI 600		
clearance/creepage dist.	2.2 mm		
Protection category	IP20		
Min. insul. strip length	6 mm		
Rated current	12 A		
Overvoltage category	III	III	II
Pollution degree	3	2	2
Rated voltage	63 V	320 V	320 V
Rated test voltage	2.5 kV	2.5 kV	2.5 kV

Terminal data	
rat.wiring solid AWGmax	0.08 mm ² - 1.5 mm ² / AWG 28 - AWG 16
rat.wiring strand.AWGmax	0.08 mm ² - 1.5 mm ² / AWG 28 - AWG 16

Approvals	
 V / A / AWG	300 / 8 / 28 - 16
approval UL - File No.	E121004
 1.5 mm ²	125 V / 2.5 kV / 9 A

Material	
insulating material	PA66
flammability class	V0
contact material	CuSn
Contact surface	Sn
terminal body thread	M2
terminal body material	CuZnPb
terminal body surface	Ni
screw thread	M2
screw material	8,8
screw surface	Cu + Ni
Glow-Wire Flammability GWFI	960 °C acc. to IEC 60695-2-12

U | Contact

Data sheet RP033xxVBLC Typ 339

Page 3/5

P/N
313391xx

xx=number of poles

2022/04/05

Version: P

Technical Data

Glow-Wire Flammability GWIT	775 °C acc. to IEC 60695-2-13
REACH	compliant
REACH - substance (SVHC)	Lead / 7439-92-1

Climatic Data

upper limit temperature	105 °C
lower limit temperature	-40 °C

general

Tolerance	ISO 2768 -mH
-----------	--------------



U | Contact

Data sheet
RP033xxVBLC Typ 339

Page 4/5

P/N
313391xx

xx=number of poles

2022/04/05

Version: P

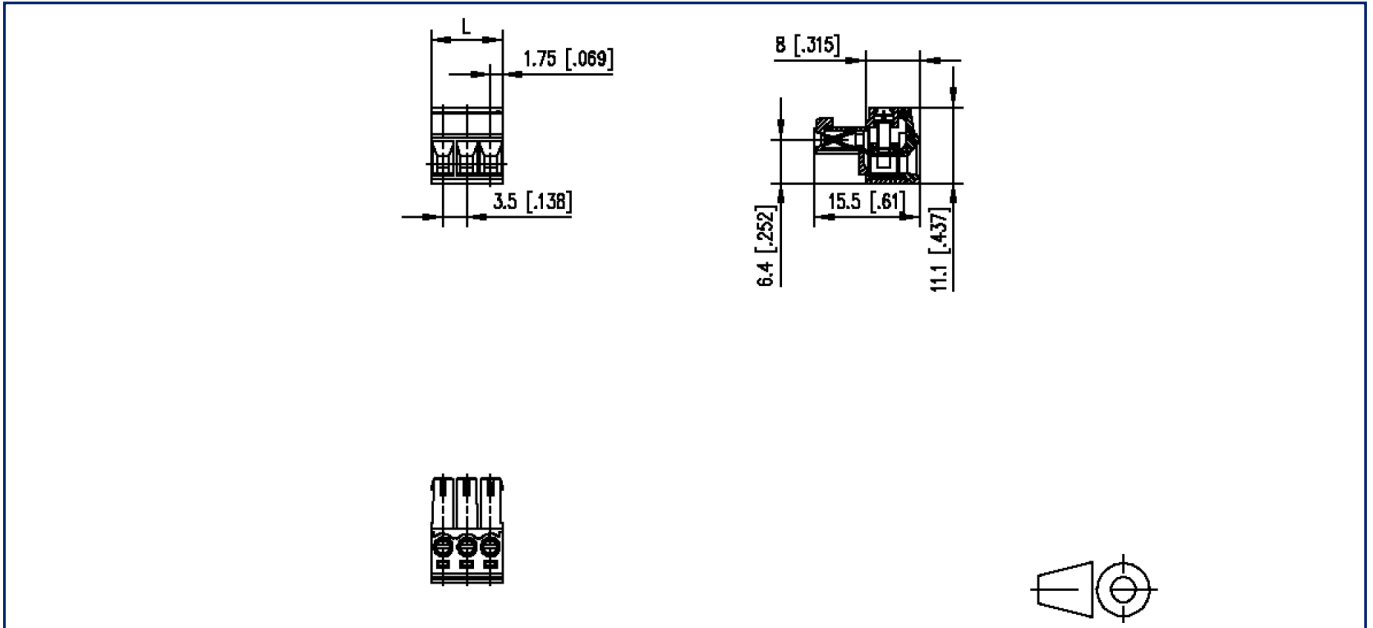
Counterpart

P/N	Designation
311881	PR043xxHBBN Typ 188
311891	PR043xxVBBN Typ 189
313421	PT093xxHBBN Typ 342
313431	PT093xxVBBN Typ 343



Illustrations

Dimensional drawing



$L = (\text{pole size} - 1) \times \text{centerline} + 3.5 \text{ mm} [0.138]$