

Data sheet RP025xxHBLC Typ 207

Page 1/6

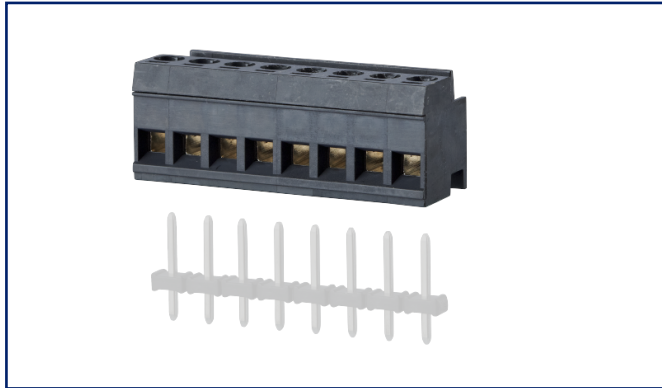
P/N
312071xx

xx=number of poles

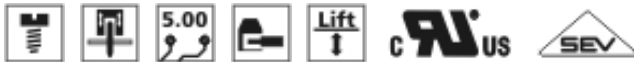
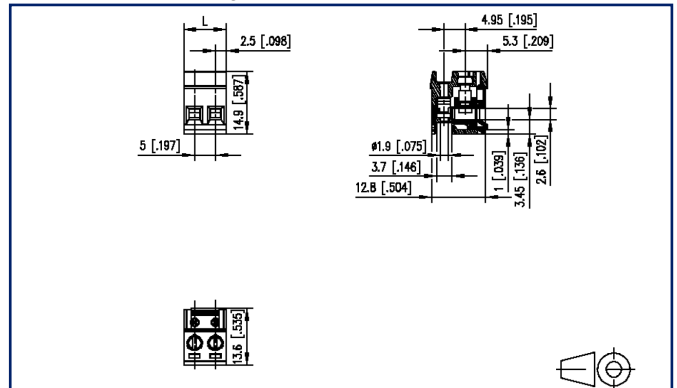
2022/04/05

Version: T

Illustrations



Dimensional drawing



See enlarged drawings at the end of document

Product specification



- screw type terminal block, pluggable
- centerline 5.00 mm, direction of connection 90°
- lift system, fittable without loss of poles
- color black
- Wire entry perpendicular to plug direction



Technical Data

General Data			
Tightening torque SEV	0.5 Nm		
Tightening torque UL	4.4 lb-in		
min. number of poles	2		
max. number of poles	24		
Insulating material class	CTI 600		
clearance/creepage dist.	3.2 mm		
Protection category	IP20		
Min. insul. strip length	6 mm		
Rated current	13.5 A		
Overvoltage category	III	III	II
Pollution degree	3	2	2
Rated voltage	200 V	500 V	500 V
Rated test voltage	2.5 kV	2.5 kV	2.5 kV

Terminal data	
rat.wiring solid AWGmax	0.08 mm ² - 2.5 mm ² / AWG 28 - AWG 12
rat.wiring strand.AWGmax	0.08 mm ² - 2.5 mm ² / AWG 28 - AWG 12

Approvals	
 V / A / AWG	300 / 15 / 28 - 12
approval UL - File No.	E121004
 2.5 mm ²	250 V / 2.5 kV / 10 A

Material	
insulating material	PA66
flammability class	V0
contact material	CuSn
Contact surface	Sn
terminal body thread	M3
terminal body material	CuZnPb
terminal body surface	Ni
screw thread	M3
screw material	8,8
screw surface	Zn Cr(VI)-frei/free
Glow-Wire Flammability GWFI	960 °C acc. to IEC 60695-2-12

U | Contact

Data sheet RP025xxHBLC Typ 207

Page 3/6

P/N
312071xx

xx=number of poles

2022/04/05

Version: T

Technical Data

Glow-Wire Flammability GWIT	775 °C acc. to IEC 60695-2-13
REACH	compliant
REACH - substance (SVHC)	Lead / 7439-92-1

Climatic Data

upper limit temperature	105 °C
lower limit temperature	-40 °C

general

Tolerance	ISO 2768 -mH
-----------	--------------



U | Contact

Data sheet
RP025xxHBLC Typ 207

Page 4/6

P/N
312071xx

xx=number of poles

2022/04/05

Version: T

Accessories

P/N	Designation
720159-01-2	Coding pin short for type 166
720159-02-2	Coding pin long for type 166
750313	Mounting flange right for type 137
750314	Mounting flange left for type 137

© 2022 METZ CONNECT - Technische Änderungen vorbehalten! Subject to modifications! Sous réserve de modifications techniques!



U | Contact

Data sheet
RP025xxHBLC Typ 207

Page 5/6

P/N
312071xx

xx=number of poles

2022/04/05

Version: T

Counterpart

P/N	Designation
310481	PR055xxVBHC Typ 048



U | Contact

Data sheet
RP025xxHBLC Typ 207

Page 6/6

P/N
312071xx

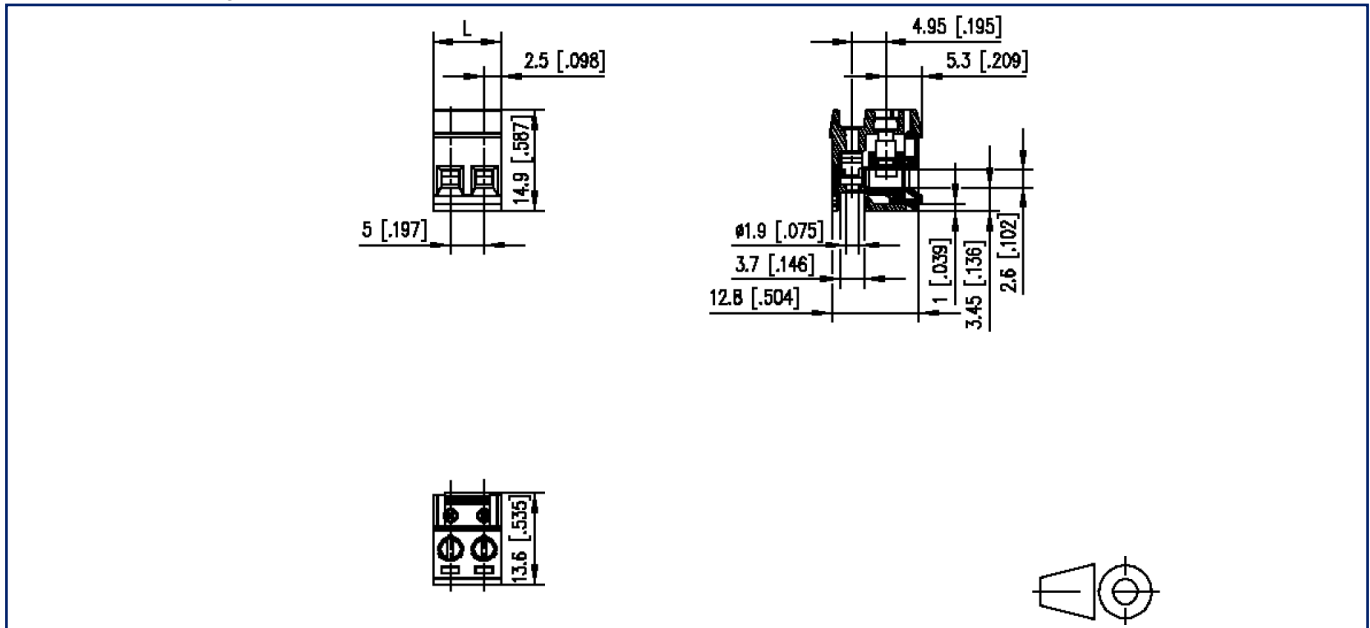
xx=number of poles

2022/04/05

Version: T

Illustrations

Dimensional drawing



$L = (\text{pole size} - 1) \times \text{centerline} + 5 \text{ mm [0.197]}$

