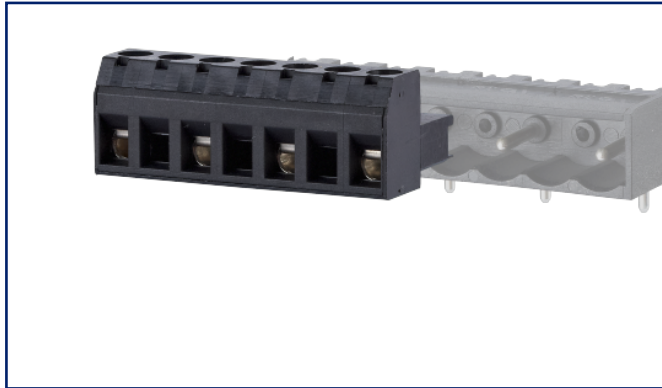


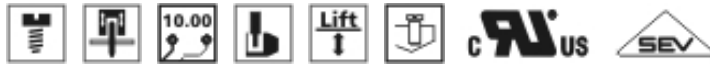
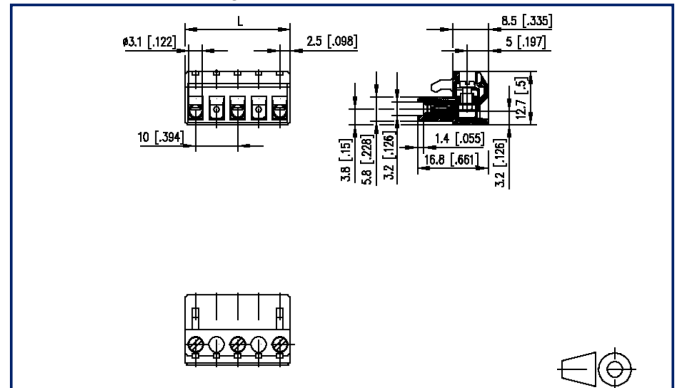
# Data sheet

## RP019xxWBLC Typ 049

### Illustrations



Dimensional drawing



See enlarged drawings at the end of document

### Product specification



- screw type terminal block, pluggable
- centerline 10.00 mm, direction of connection vertical 0°
- lift system, fittable without loss of poles
- color black



## Technical Data

General Data			
Tightening torque SEV	0.5 Nm		
Tightening torque UL	4.4 lb-in		
min. number of poles	2		
max. number of poles	12		
Insulating material class	CTI 600		
clearance/creepage dist.	9.07 mm		
Protection category	IP20		
Min. insul. strip length	6 mm		
Rated current	10 A		
Overvoltage category	III	III	II
Pollution degree	3	2	2
Rated voltage	500 V	1000 V	1000 V
Rated test voltage	6 kV	6 kV	6 kV

Terminal data	
rat.wiring solid AWGmax	0.33 mm <sup>2</sup> - 2.5 mm <sup>2</sup> / AWG 22 - AWG 12
rat.wiring strand.AWGmax	0.33 mm <sup>2</sup> - 2.5 mm <sup>2</sup> / AWG 22 - AWG 12

Approvals	
 V / A / AWG	600 / 15 / 22 - 12
approval UL - File No.	E121004
 2.5 mm <sup>2</sup>	630 V / 6 kV / 13.5 A

Material	
insulating material	PA66
flammability class	V0
contact material	CuBe
Contact surface	Ni + Ag
terminal body thread	M3
terminal body material	CuZnPb
terminal body surface	Ni
screw thread	M3
screw material	8,8
screw surface	Zn Cr(VI)-frei/free
wire protector material	CuNiZn

# U | Contact

## Data sheet RP019xxWBLC Typ 049

Page 3/6

P/N  
310492xx

xx=number of poles

2022/04/05

Version: Q

### Technical Data

Glow-Wire Flammability GWFI	960 °C acc. to IEC 60695-2-12
Glow-Wire Flammability GWIT	775 °C acc. to IEC 60695-2-13
REACH	compliant
REACH - substance (SVHC)	Lead / 7439-92-1

### Climatic Data

upper limit temperature	105 °C
lower limit temperature	-40 °C

### general

Tolerance	ISO 2768 -mH
-----------	--------------



# U | Contact

Data sheet  
RP019xxWBLC Typ 049

Page 4/6

P/N  
310492xx

xx=number of poles

2022/04/05

Version: Q

## Accessories

P/N	Designation
716906	Coding comb orange



# U | Contact

Data sheet  
RP019xxWBLC Typ 049

Page 5/6

P/N  
310492xx

xx=number of poles

2022/04/05

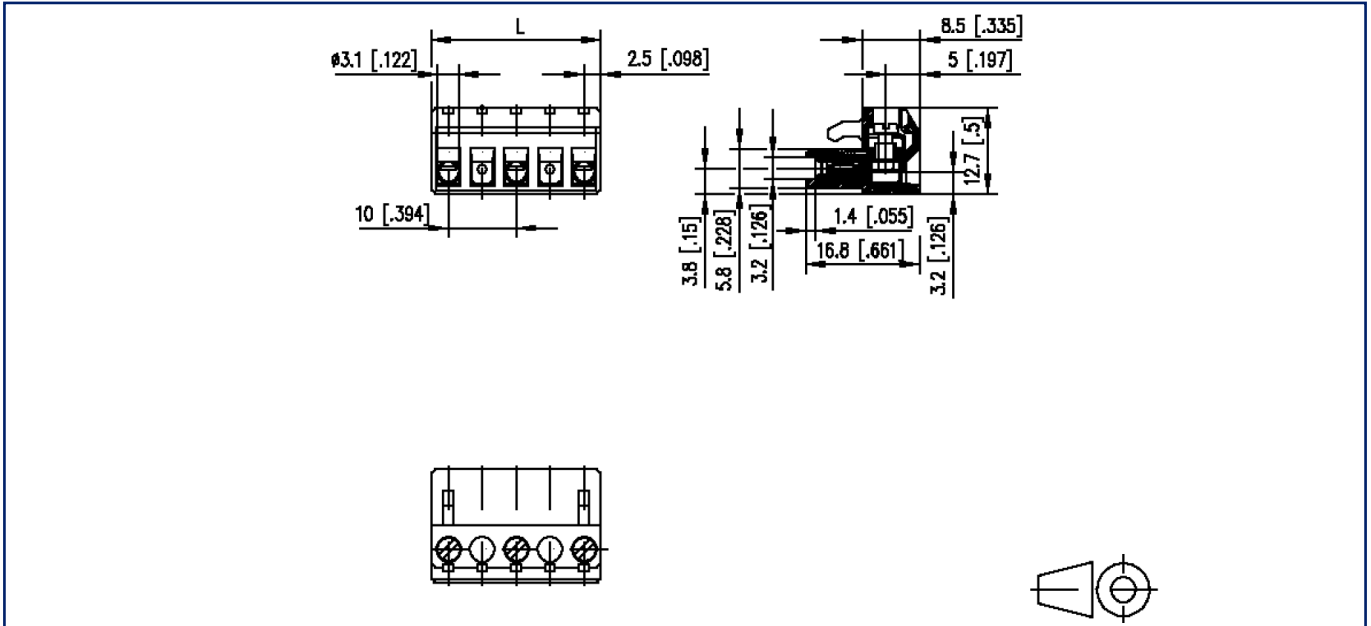
Version: Q

## Counterpart

P/N	Designation
310192	PT049xxVBEC Typ 019
310202	PT049xxVBBN Typ 020
310292	PT049xxHBEC Typ 029
310302	PT049xxHBBN Typ 030

## Illustrations

Dimensional drawing



$L = (\text{pole size} - 1) \times \text{centerline} + 5 \text{ mm} [0.197]$