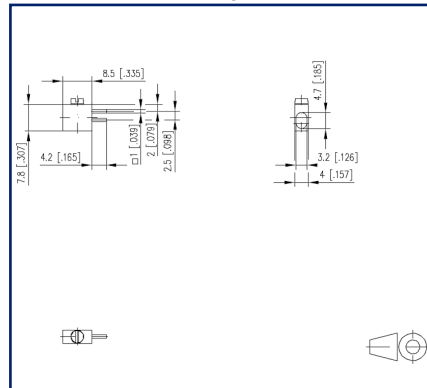
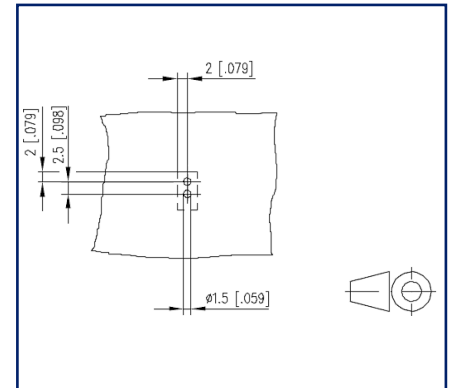


Illustrations**Dimensional drawing****Drill pattern**

See enlarged drawings at the end of document

Product specification

- screw type terminal block, THR solderable, double solder pins
- direction of connection vertical 0°
- color metallike
- Tape & Reel packaging
- screw completely hand-screwed

Technical Data

General Data

Tightening torque SEV	0.5 Nm
Tightening torque UL	4.4 lb-in
Solder pin length	4.2 mm
min. number of poles	1
max. number of poles	1
Protection category	IP00
Rated current	20 A

Terminal data

rat.wiring solid AWGmax	0.52 mm ² - 4 mm ² / AWG 20 - AWG 10
rat.wiring strand.AWGmax	0.52 mm ² - 4 mm ² / AWG 20 - AWG 10

Material

terminal body thread	M3,5
terminal body material	CuZnPb
terminal body surface	Ni + Sn
screw thread	M3,5
screw material	8,8
screw surface	Zn Cr(VI)-frei/free
REACH	compliant
REACH - substance (SVHC)	Lead / 7439-92-1

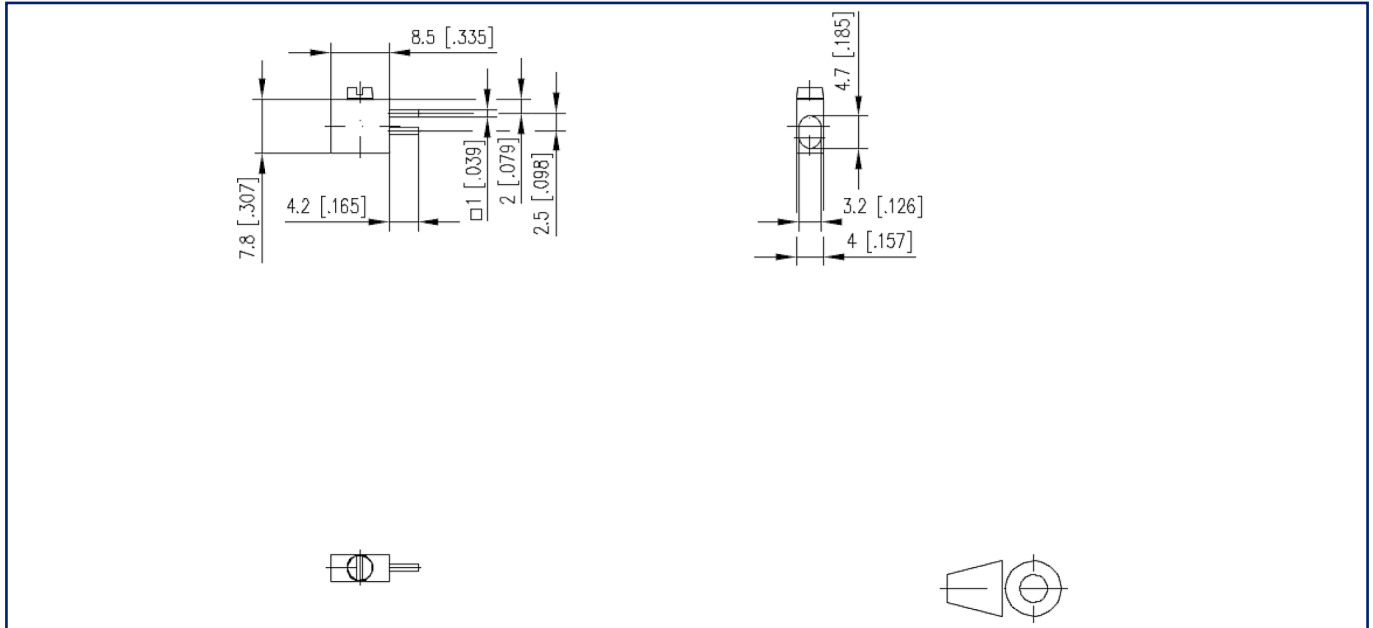
general

Tolerance	ISO 2768 -mH
Solderability	Acc. to IPC/JEDEC J-STD-020D-MSL 1



Illustrations

Dimensional drawing



$L = (\text{pole size} - 1) \times \text{centerline} + 8.5 \text{ mm [0.335]}$

© 2022 METZ CONNECT - Technische Änderungen vorbehalten! Subject to modifications! Sous réserve de modifications techniques!

Illustrations

Drill pattern

