






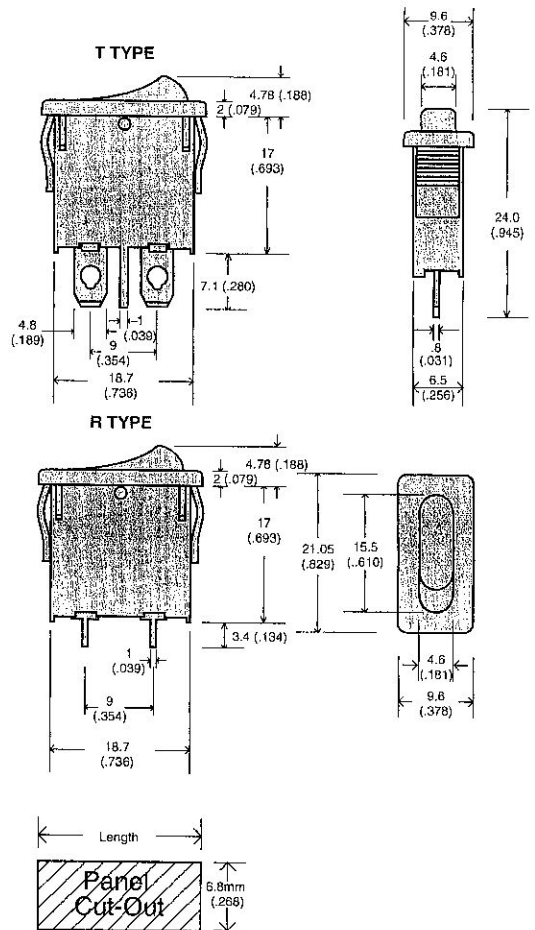
R6 Tiny Rocker Switches

Features

- Snap-in mounting
- Quick connect terminals

Specifications

- Rating 3A 125VAC, 2A 250VAC **UL**  
10A 125VAC, 6A 250VAC **UL**  
4(1)A 250VAC T85 
- Mechanical Life >10,000 Cycles
- Electrical Life >10,000 Cycles
- Contact Resistance <20mΩ (Initial)
- Insulation Resistance 1,000MΩ (DC 500V)
- Dielectric Strength 1,500V AC
..... for 1 Minute
- Temperature Strength ... <80°C



Panel Thickness (mm)	Length (mm)
0.7 ~ 1.25	19.2 + 0.2
1.25 ~ 2.0	19.4 + 0.2
2.0 ~ 3	19.6 + 0.2

Ordering Information:

