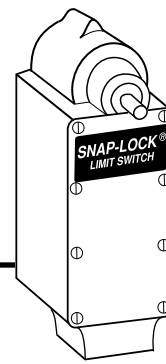


Double Pole
Standard Environment

Limit Switches

Sliding
Contacts



Limit Switches

The versatility of the Snap-Lock mechanism is gained through the use of a series of uniquely designed cams. The cam and cam mechanism allow features such as bi-directional operation and generous overtravel. These features make the EA710 Series one of the most popular. Can be furnished with Standard, Wide or Long mounting.

EA710 Double Pole 2 N.O. - 2 N.C. / Sliding Contacts / Cam Action

| Standard Mounting Model No. | Wide Mounting Model No. | Long Mounting Model No. | Dir. Of Operation | Angle A Trip Travel | Angle B Reset Travel | Angle C Recom. Travel | Angle D Total Travel | Angle E Min. Travel to Maintain | Angle F Overall Travel | Torque (inch lbs) | Contact Config. | Data Drawing |
|----------------------------------------------|-------------------------|-------------------------|-------------------|---------------------|----------------------|-----------------------|----------------------|---------------------------------|------------------------|-------------------|-----------------|--------------|
| STANDARD TRAVEL | | | | | | | | | | | | |
| EA710-20000 | EA710-50000 | EA710-80000 | CW | 18° | 14° | 30° | 90° | - | - | 20 | A | 1 |
| EA710-20001 | EA710-50001 | EA710-80001 | CCW | 18° | 14° | 30° | 90° | - | - | 20 | B | 1 |
| EA710-20100 | EA710-50100 | EA710-80100 | CW/CCW | 18° | 14° | 30° | 90° | - | - | 20 | C | 1 |
| MAINTAINED CONTACT AND LEVER POSITION | | | | | | | | | | | | |
| EA710-26000 | EA710-56000 | EA710-86000 | CW | 55° | 22° | 60° | 116° | 55° | 64° | 6 | D | 2 |
| | | | CCW | 25° | 25° | 60° | 124° | 54° | 56° | 9 | | |

Common Switch Characteristics

| DOUBLE POLE, STANDARD ENVIRONMENT, SLIDING CONTACTS | |
|------------------------------------------------------------|-------------------------------|
| NEMA Enclosure Type | 1, 4, 13 |
| Housing Material | Zinc |
| Ambient Temperature Range* | -20°C to +90°C |
| Shipping Weight | 4 lbs. approx. |
| Lever Adjustment | 7°30' Increments Thru 360° |
| Contacts | Sliding, Silver Alloy, Form Z |

*Some high temperature (0 to 150°C) versions available. Contact factory.

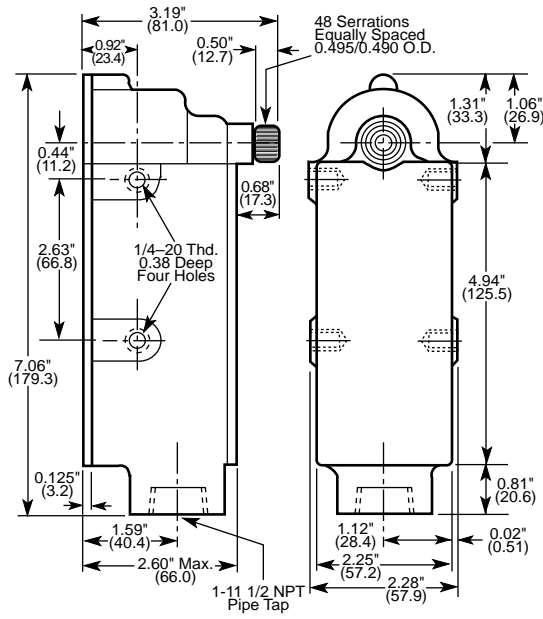
Continuous Current Rating - Amperes

| VOLTAGE | AC | DC |
|---------|------|-----|
| 125 | 10.0 | 2.5 |
| 250 | 7.5 | .75 |
| 480 | 5.0 | - |
| 600 | 2.5 | - |

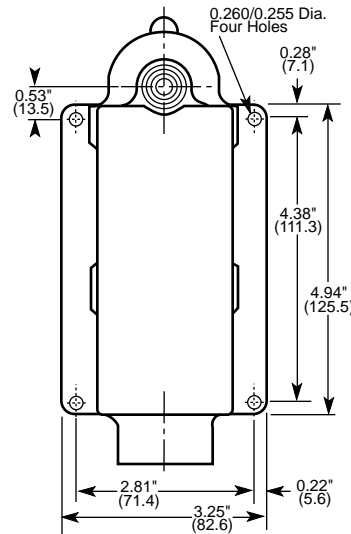
75-100% Power Factor

See Operating Levers Section

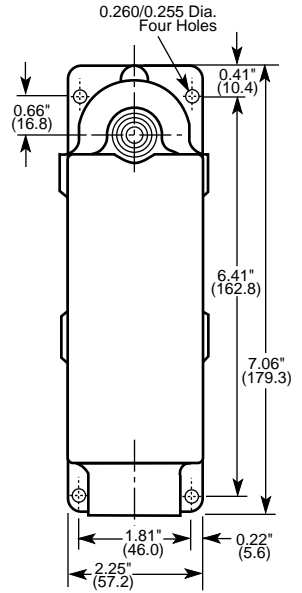
STANDARD MOUNTING PLATE



WIDE MOUNTING PLATE



LONG MOUNTING PLATE

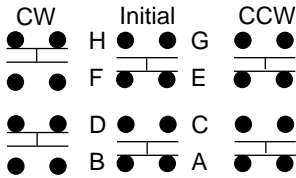


Dimensions: inches/(mm)

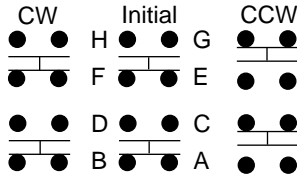
Limit Switches

Contact Configurations

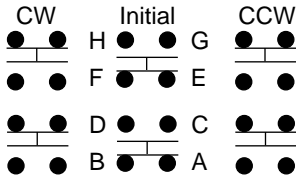
CIRCUIT A



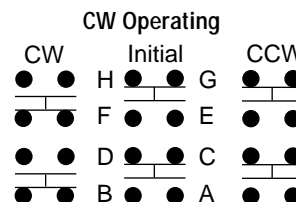
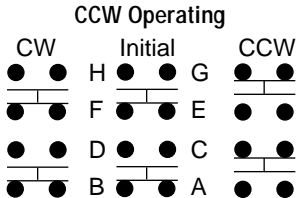
CIRCUIT B



CIRCUIT C

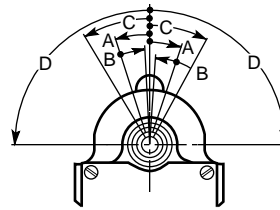


CIRCUIT D

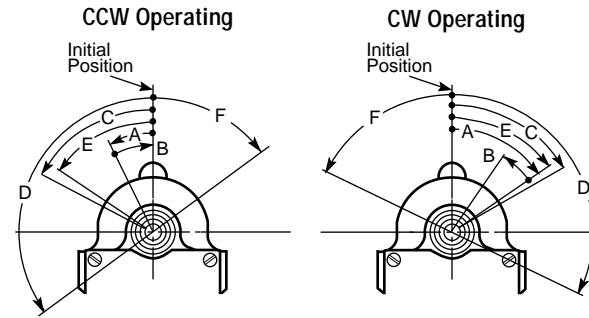


Operational Data Drawings

DRAWING #1



DRAWING #2



To change switch operation from CW operating to CCW operating, operate switch through angle E. Remove lever and reset at initial position.



Namco Controls Corporation
Mayfield Village, OH 44143
(440) 460-1360 • FAX (440) 460-3800 • namcocontrols.com

For technical assistance, call 1-800-NAMTECH