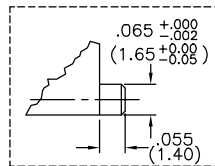
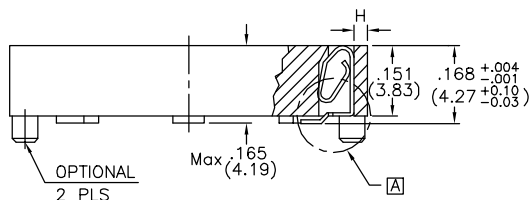
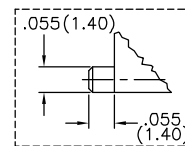


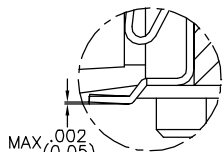
RECOMMENDED PAD LAYOUT



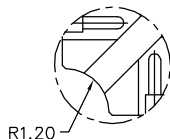
SECTION:A---A



SECTION:B---B



SCALE:8/1



SCALE:8/1

Materials and Finish

Contact Material: Phosphor Bronze
 Contact Finish: 150u" Tin/Lead over 50u" Nickel
 Insulator Material: PPS Thermoplastic, 40% glass filled
 UL94V-0 Rated

Environmental Specifications

Thermal Shock: Cycled from +55°C to +80°C, no discontinuity or physical damage (per MIL-STD-1344, method 1003)
 Temperature/Humidity: 85°C/85%RH (per MIL-STD-1344, method 1002)

Electrical Specifications

Contact Current Rating: 1 Amp
 Contact Resistance: Initial: 6.5 milliohms
 Final: 15 milliohms max after test
 Insulation Resistance: 10000 Megohms Min.
 Dielectric Strength: 1000 VAC rms for 1 minute

Mechanical Specifications

Durability: 50 cycles (per MIL-STD-1344, method 2016)
 Vibration: per MIL-STD-1344A Method 2005.1, Test Condition II
 Shock: 35Gs (per MIL-STD-810c, method 516.2)
 Contact Normal Force: 70g per pin
 Operating Temperature: -55°C to +105°C
 Max. Processing Temperature: 230°C for 30 Sec
 260°C for 5 Sec

| No. of Pos. | Dimensions | | | | | | | | | | |
|-------------|--------------|--------------|--------------|-------------|--------------|-------------|--------------|-------------|--------------|--------------|--------------|
| | A | B | C | D | E | F | G | H | I | J | K |
| 32 | .766 (19.45) | .665 (16.90) | .400 (10.16) | .300 (7.62) | .486 (12.34) | .386 (9.80) | .700 (17.78) | .028 (0.70) | .595 (15.11) | .495 (12.57) | 0.300 (7.62) |

CSA NRTL/C Certified File No. LR78160

| REVISION | DATE | DESCRIPTION | DRAWN BY | DESIGNED BY | UNITS |
|----------|----------|-----------------|------------|-------------|----------|
| B1 | 10/30/00 | ref ECD #99-168 | J. Kring | | MM |
| | | | CHECKED BY | APPROVED BY | DATE |
| | | | | | 10/30/00 |

SMP-32LCC2-y
 xx = # of Contacts

Surface Mount PLCC Socket

y=N for no Pegs, P for parts with Pegs

