

KLD Series PCB Mount DC Power Jack

Features

- 2.0mm and 2.5mm
- Built in DC On/Off Switch
- Screw Machine Contact Center Pin for High Current Capability
- Laptop and Palm Computers, Portable Modems, Radar Detectors, and Other Portable Device Applications
- CSA/NRTL Certified File No. LR78160



Materials and Finish



Plastic Housing: PBT Thermoplastic, UL 94V-0 Rated, Black Color

Center Pin: Copper Alloy, Nickel Plated

Contact #1 and #3: Brass, Tin Plated

Contact #2: Phosphor Bronze, Tin Plated

Electrical Characteristics

Contact Resistance

Before Durability Test

Between Terminals: 30 Milliohms Max.

Plug to Contacts: 50 Milliohms Max.

After Durability Test

Between Terminals: 60 Milliohms Max.

Plug to Contacts: 100 Milliohms Max.

Rated Voltage: DC 24V

Rated Current: 3.5 Amps

Insulation Resistance: 100 Megohms Min.

Dielectric Withstanding Voltage: 500V AC for 1 Minute

Mechanical Characteristics

Durability Test: 5000 Cycles

Insertion Force: 0.3kg - 2.0kg

Extraction Force: 0.3kg - 2.0kg

Operating Temperature: -25°C to +85°C

Ordering Information

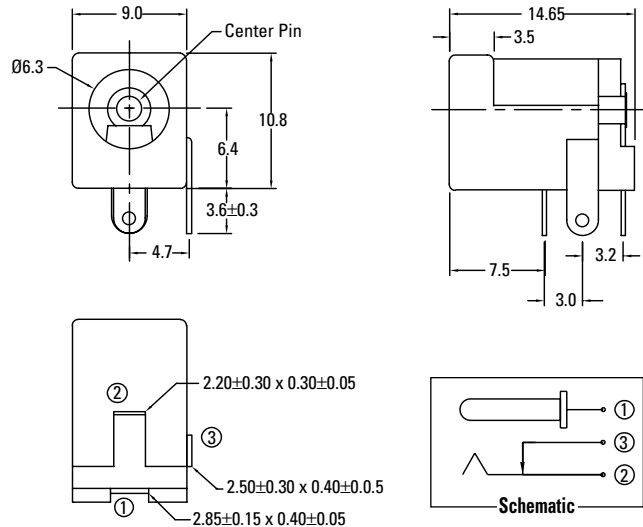
Part Number*	Inner Pin Diameter	Lead Style
KLD-0202-A	2.0mm±0.05	Straight
KLD-0202-AC	2.0mm±0.05	Crimped
KLD-0202-B	2.5mm±0.05	Straight
KLD-0202-BC	2.5mm±0.05	Crimped

DC POWER CONNECTORS

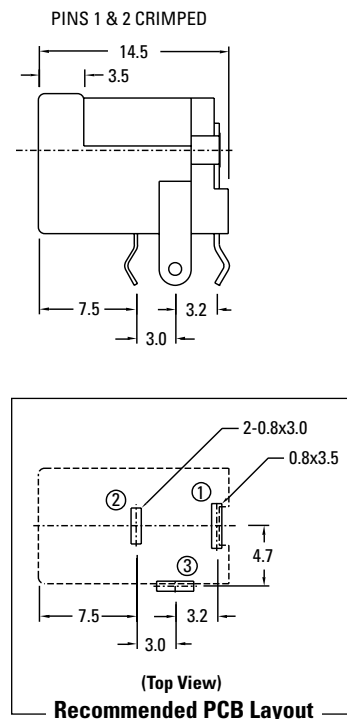
KLD Series

KLD Series Dimensions

KLD-0202-A, KLD-0202-B



KLD-0202-AC, KLD-0202-BC



Dimensions in mm

*Also available - KLD-HT Reflow Compatible
Contact factory for specifications. 888-KYCON-22