

KLDPX Series
Panel Mount DC Power Jack

Features

- 2.0mm and 2.5mm
- Panel Mount
- Solder Eyelets
- Built in DC On/Off Switch
- Portable Electronic Devices
- CSA/NRTL Certified File No. LR78160



Performance Specifications
Materials and Finish

- Center Pin and Threaded Barrel:** Brass, Nickel Plated
Contact #1, #3: Brass, Silver Plated
Contact #2: Phosphor Bronze, Silver Plated
Nut: Brass, Nickel Plated
Washer: SPCC, Nickel Plated

Electrical Characteristics

- Rated Current:** 5A
Rated Voltage: 24V DC
Insulation Resistance: 100 Megohms Min. at 500V DC
Contact Resistance: 30 milliohms Max.
Dielectric Withstanding Voltage: 500V AC for 1 Minute

Mechanical Characteristics

- Insertion Force:** 3.0 kg Max.
Extraction Force: 0.3 kg Min.

DC POWER CONNECTORS

KLDPX Series

Documentation & Ordering Information

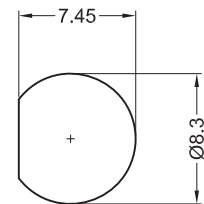
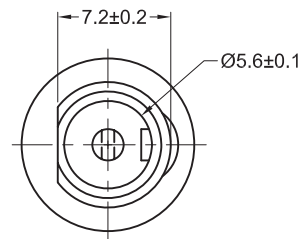
Kycon Part #

Part Number Builder

Series	Diameter
Series KLDPX-0302 - Panel Mount DC Power Jack	
Diameter A - 2.0mm Center Pin Diameter B - 2.5mm Center Pin Diameter	

KLDPX-0302 Series Dimensions

Dimensions in mm



Recommended Panel Cutout

(NOTE: NUT AND WASHER NOT SHOWN THIS VIEW)

