

Weather Proof Cover - Extra-Duty Plastic In-Use Weatherproof Cover, Double-Gang, Vrt, 4.75" Clear

Item WP5500C



PRODUCT DESCRIPTION

Plastic In-Use Weatherproof Covers are extra-duty rated and easy to install. Covers come with a gasket, mounting screws, base, cover assembly and inserts to meet the needs of a variety of applications.

FEATURES

- ▶ Complies with 2020 NEC Article 406.9 (B)(1) for wet locations and extra-duty applications
- ▶ CEC Article 26-702 Compliant
- ▶ UL Certified for Type 3R outdoor enclosures
- ▶ Meets requirements for cold impact testing: -60° F (-51° C)
- ▶ Heavy-duty UV stabilized polycarbonate cover, mounting base and inserts
- ▶ 1/8" (3 mm) thick, pre-adhered neoprene gasket with slits for mounting screws
- ▶ Lockable hasp: All models accept up to 1/4" (6 mm) dia. shank
- ▶ Impact rated: 12 lb. impact test to ensure cover remains intact
- ▶ Reinforced hinge pin designed to exceed 40 lb. hinge hang/stress test
- ▶ Warranty: 1-year limited
- ▶ Six inserts provided with all models that allow each model to meet multiple installations (up to 70 configurations)
- ▶ Max cord size: (2) #12 AWG or (1) #10 AWG
- ▶ 30/50 A (1) #6 AWG

APPLICATIONS

- ▶ Receptacle Protection

TECHNICAL DATA

General	
Model Number	WP5500C
Description	Extra-Duty Plastic In-Use Weatherproof Cover, Double-Gang, Vrt, 4.75" Clear
UPC Code	078275145399
Brand	Intermatic
Country of Origin (Intermatic)	MEXICO
Warranty Period	1-Year limited

Mechanical Specifications	
Number of Included Inserts	6
Insert Types Included	WP107; WP213
Hinge Direction	Vertical
Is Extra-Duty Rated	Yes

Dimensions	
Product Dimensions (H x W x D) in	6 x 6 5/8 x 4 3/4
Accepted Cord Size Max	1x6 AWG
Box Type	Double

Material Specifications	
Color	Clear; Gray
Weatherproof Cover Material	UV Stabilized Plastic

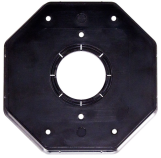
Packaging

Shipping Weight (lbs)	1.1
Unit Carton Dimensions (H x W x L) in	6.5 x 4 x 6.5 in

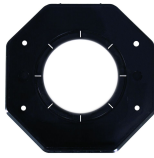
Standards and Certifications

UL Certification	cULus
CSA Certification	cCSAus
California Proposition 65	None

ACCESSORIES



WP107
Double-Gang Round Insert, 1 3/8", 1 5/8", 1 3/4"



WP213
Double-Gang Round Insert, 2 1/8", 2 5/8"