

## Photocontrol - Button Thermal Photocontrol, 120 V

Item K4021C



### PRODUCT DESCRIPTION

These photocontrols install within lighting fixtures, post lamps, or in-wall boxes to provide dusk-to-dawn ON/OFF control of outdoor lighting.

### FEATURES

- ▶ Mechanical bimetal switch with Cadmium Sulfide photocell
- ▶ Compact size fits into standard outlet box, post lamp, wall pack and other lighting fixtures
- ▶ Delay feature prevents unwanted OFF switching
- ▶ 3/8"-18 NPSM, 3/4" long stem with locking nut and washer gasket

### APPLICATIONS

- ▶ Outdoor Lighting Control

### TECHNICAL DATA

General	
Model Number	K4021C
Description	Button Thermal Photocontrol, 120 V
UPC Code	078275002005
Brand	Intermatic
Country of Origin (Intermatic)	MEXICO
Warranty Period	2-Year limited
Usage Environments	Outdoor
Photocontrol Type	Thermal
Expected Lifetime (Years)	5
Expected Lifetime (Operations)	3650
Application Compatibilities	HID; Fluorescent; Incandescent
Photocontrol Style	Button
Photocontrol Sensor Location	Front

Control Specifications	
Sensor Time Delay	30 sec to 90 sec
Photocell Type	Cadmium Sulfide
Photo Control Switch Type	Mechanical Bimetal
Fail Mode	ON
Activation On	1 to 5 fc
Activation Off	3 to 15 fc

Dimensions	
Product Height (in)	1 13/16
Product Height (mm)	46
Product Width (in)	15/16
Product Width (mm)	23.8
Product Depth (in)	13/16

Product Depth (mm)	20.6
Wire Lead Length (in)	9
Wire Lead Length (mm)	228.6
Wire Size Max	#18 AWG

#### Material Specifications

Cover Color	Gray
Housing Material	Polycarbonate

#### Load Ratings

Magnetic Ballast Range(s)	8.3 A, 1000 VA
Tungsten Range(s)	15 A, 1800 W

#### Electrical Specifications

Wiring Option	Wire leads
Input Voltage Range(s)	120 VAC, 50/60 Hz

#### Packaging

Shipping Weight (lbs)	0.25
Unit Carton Dimensions (H x W x D) in	4.88 x 1.75 x 3 in

#### Environmental Specifications

Temperature (operation)	-40°C..70°C
-------------------------	-------------

#### Standards and Certifications

UL Certification	UL
CSA Certification	cCSAus
Other Certifications and Compatibilities	Title 20
California Proposition 65	DEHP
PDF Standards And Certifications	UL; cCSAus; Title 20
Epi Certifications	UL; cCSAus; Title 20

---

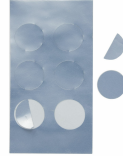
## ACCESSORIES



6LV1352  
Light Shield Accessory for EK4036S, EK4436SM,  
K4000 Series Button Photocontrols



K43-WP-KIT  
Wall Plate Kit for EK4036S, K4000 Series Button  
Photocontrols



LGLBL  
Lens Sticker Accessory for EK4000 & K4000 Series  
Photocontrols