

Photocontrol - Wall Mount Thermal Photocontrol, 120 V

Item K4321C



PRODUCT DESCRIPTION

Intermatic's wall mount thermal-type photocontrol installs into standard outdoor single-gang electrical boxes. The photocontrol provides dusk-to-dawn lighting control. Compatible with Fluorescent, HID, and Incandescent bulbs.

FEATURES

- ▶ Mechanical bimetal switch with cadmium sulfide photocell
- ▶ Delay feature prevents unwanted ON/OFF switching
- ▶ Fail ON Mode
- ▶ Includes weatherproof wall plate and neoprene gasket

APPLICATIONS

- ▶ Outdoor Lighting Control

TECHNICAL DATA

General

Model Number	K4321C
Description	Wall Mount Thermal Photocontrol, 120 V
UPC Code	078275002036
Brand	Intermatic
Country of Origin (Intermatic)	MEXICO
Warranty Period	2-Year limited
Usage Environments	Outdoor
Photocontrol Type	Thermal
Expected Lifetime (Years)	5
Expected Lifetime (Operations)	3650
Application Compatibilities	HID; Fluorescent; Incandescent
Photocontrol Style	In-Wall
Photocontrol Sensor Location	Front

Control Specifications

Sensor Time Delay	30 sec to 90 sec
Photocell Type	Cadmium Sulfide
Photo Control Switch Type	Mechanical Bimetal
Fail Mode	ON
Activation On	1 to 5 fc
Activation Off	3 to 15 fc

Dimensions

Product Height (in)	1 13/16
Product Height (mm)	46
Product Width (in)	15/16
Product Width (mm)	23.8
Product Depth (in)	13/16

Product Depth (mm)	20.6
Wire Lead Length (in)	9
Wire Lead Length (mm)	228.6
Wire Size Max	#18 AWG

Material Specifications

Cover Color	Gray
Housing Material	Polycarbonate

Load Ratings

Magnetic Ballast Range(s)	8.3 A, 1000 VA
Tungsten Range(s)	15 A, 1800 W

Electrical Specifications

Wiring Option	Wire leads
Input Voltage Range(s)	120 VAC, 50/60 Hz

Packaging

Shipping Weight (lbs)	0.375
Unit Carton Dimensions (H x W x D) in	4.88 x 1.75 x 3 in

Environmental Specifications

Temperature (operation)	-40°C..70°C
-------------------------	-------------

Standards and Certifications

UL Certification	UL
CSA Certification	cCSAus
Other Certifications and Compatibilities	Title 20
California Proposition 65	DEHP
PDF Standards And Certifications	UL; cCSAus; Title 20
Epi Certifications	UL; cCSAus; Title 20

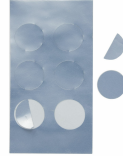
ACCESSORIES



6LV1352
Light Shield Accessory for EK4036S, EK4436SM,
K4000 Series Button Photocontrols



K43-WP-KIT
Wall Plate Kit for EK4036S, K4000 Series Button
Photocontrols



LGLBL
Lens Sticker Accessory for EK4000 & K4000 Series
Photocontrols