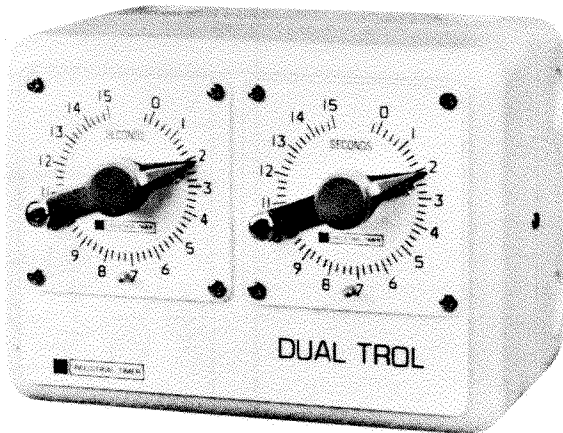


DUAL TROL®

RECYCLING TIMERS



DUAL-TROL SERIES TIMER

DESCRIPTION

The combination of DTH & TM form the Dual Trol® system, a compact recycling timer that provides two adjustable on/off sequencing switch closures. The total system consists of one DTH housing and two TM modules. The system features easy adjustability for both on-time and off-time, plug-in modules, and screw-type terminal strip for external wiring. The plug-in modules mount in the DTH heavy metal housing which is designed for base mounting. The load switch is an isolated, single-pole, double throw switch.

APPLICATION

This unique system is designed for applications requiring a continuously recycling timer with easy and accurate adjustability. Typical applications include: industrial laboratories to control cycle tests.

OPERATION

- 1) To set the duration of the on cycle, set the selector to the desired time.
- 2) Repeat step 1 for the off cycle.
- 3) To start the system, supply power to the terminals L1 and L2. The on cycle will be initiated and the on timer will begin to run. No other operator involvement is required.
- 4) When the on timer has timed out, it will automatically reset, and the off timer will start. At this time, the power will be removed from the load.
- 5) When the off timer has timed out, it will automatically reset and the on timer will start and power will be reapplied to the load.
- 6) When de-energized, timer resets to original start position.

SPECIFICATIONS

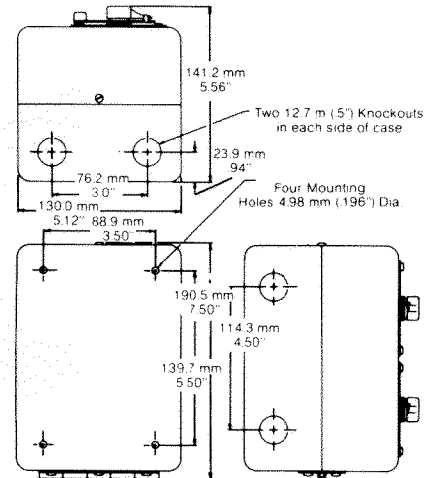
Repeat Accuracy	± 1.5% of full scale.
Reset Time	0.5 seconds at the max setting.
Load Switch Contacts	isolated SPDT rated 10 amps non-inductive
Wiring	screw type terminal strip
Voltage	120V/60Hz standard. Consult factory for other voltages and frequencies.

STANDARD MODELS

MODEL NUMBER	MAXIMUM TIME CYCLE	DIAL DIVISION
TM 6S	6 sec.	1/10 sec.
TM 15S	15 sec.	1/4 sec.
TM 30S	30 sec.	1/2 sec.
TM 60S	60 sec.	1 sec.
TM 3M	3 min.	3 sec.
TM 5M	5 min.	5 sec.
TM 15M	15 min.	15 sec.
TM 30M	30 min.	30 sec.
TM 60M	60 min.	1 min.
TM 3H	3 hr.	3 min.

Dual Trol® Housing: DTH-120/50-60 Hz

DUAL-TROL DIMENSIONS



DUAL-TROL WIRING

