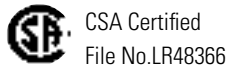
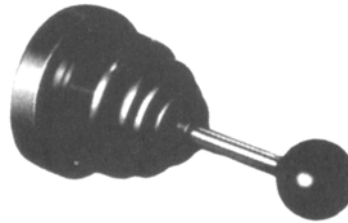


ARN Series — Mono-Lever Switches

Mono-Lever Switches Ø 1-13/64" (30mm) Contact Blocks Rated for 600V, 10A

Key features of the ARN Series include:

- Available in 2-, 3-, and 4-positions.
- Maintained and spring-return modes available.
- Models available with interlock mechanism to prevent inadvertent actuation.

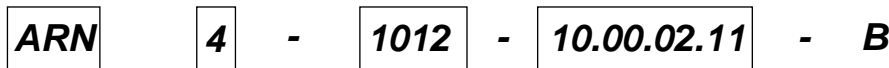


Specifications	Operating Temperature	25° to 50°C	
	Insulation Resistance	100MΩ	
	Contact Rating	Rated Voltage: Current	110VDC: 3A 24V AC/DC: 10A 120VAC: 10A 240VAC: 6A 480VAC: 2A 600VAC: 1A
		Insulation Voltage	600V AC/DC
		Rated Thermal Current	10A
		Electrical Life	Over 500,000 operations

Part Numbering Guide (Assembled)

Part Numbering Guide: Assembled Mono-Levers

Example: Part Number ARN4-1012-10.00.02.11-B



- ① Type
- ② No. of Contact Blocks
- ③ Lever Action
- ④ Contact Arrangement




	Description	Code	Remarks		
① Type	Standard Lever	ARN	Interlocking lever prevents inadvertent operation.		
	Short Lever	ARNS			
	Interlocking Lever	ARNL			
② No. of Contact Blocks	—	1 2 3 4	Each contact block contains two independent contacts.		
	③ Lever Action	Blocked		0	
		Maintained		1	Specify in this order: Up.Right.Down.Left
		Spring Return		2	
④ Contact Arrangement	No contacts	00	Specify the number of contacts to be activated in all active (non-blocked) positions: Up.Right.Down.Left		
	1 NO contact	10			
	1 NC contact	01			
	1 NO and 1 NC contact	11			
	2 NO contacts	20			

Mono-Lever Switches (Sub-Assembled)

Contact Block
+
Operator
+
Complete Part



Part Numbers: Standard Mono-Lever Operators

Operator Type	Lever Operation Mode	Part Number
Standard Lever 	2-Position manual return 3-Position manual return 4-Position manual return	ARNO-1010-B ARNO-1110-B ARNO-1111-B
	2-Position spring return 3-Position spring return 4-Position spring return	ARNO-2020-B ARNO-2220-B ARNO-2222-B
	2-Position manual return 3-Position manual return 4-Position manual return	ARNSO-1010-B ARNSO-1110-B ARNSO-1111-B
Short Lever 	2-Position spring return 3-Position spring return 4-Position spring return	ARNSO-2020-B ARNSO-2220-B ARNSO-2222-B
	2-Position manual return 3-Position manual return 4-Position manual return	ARNLO-1010-B ARNLO-1110-B ARNLO-1111-B
	2-Position spring return 3-Position spring return 4-Position spring return	ARNLO-2020-B ARNLO-2220-B ARNLO-2222-B
Interlocking Lever 	2-Position manual return 3-Position manual return 4-Position manual return	ARNLO-1010-B ARNLO-1110-B ARNLO-1111-B
	2-Position spring return 3-Position spring return 4-Position spring return	ARNLO-2020-B ARNLO-2220-B ARNLO-2222-B

Part Numbering Guide:

Combination Mono-Lever Operators

Example: Part Number ARN0-1012-B

ARN
0
-
1012
-
B

① Type

② Lever Action

	Description	Code	Remarks
① Type	Standard Lever	ARN	Interlocking lever prevents inadvertent operation.
	Short Lever	ARNS	
	Interlocking Lever	ARNL	
② Lever Action	Blocked	0	Specify in this order: Up.Right.Down.Left
	Maintained	1	
	Spring Return	2	

Part Numbers: Contact Blocks

Contact Arrangement	Part Number
2NO contacts	BR-1E
1NO & 1NC contact	BR-2E
2NC contacts	BR-3E
1NO early make contact	BR-1EM



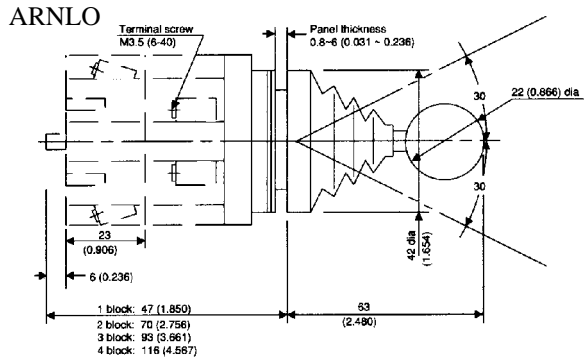
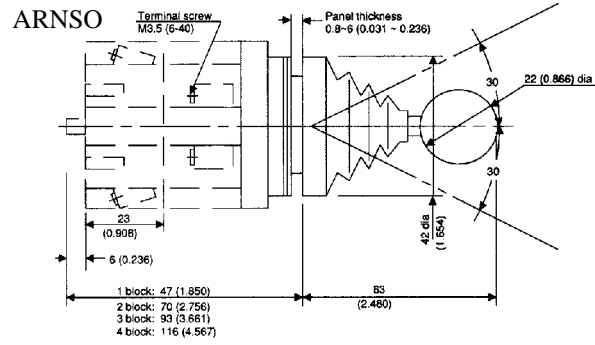
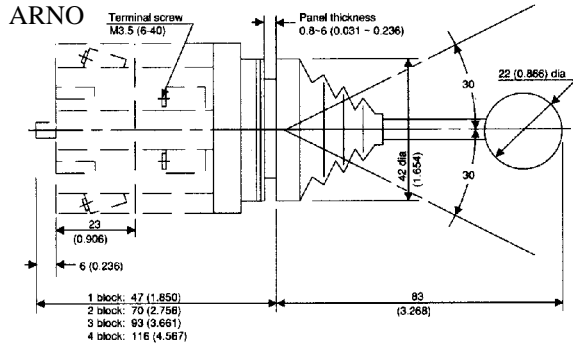
To calculate the number of contact blocks required, add the number of NO and NC contacts on each pair of adjoining positions (up + right, right + down, down + left, and left + up). The largest of the four sums is the number of contact blocks required. Up to four contact blocks can be mounted.



Accessories

Item	Part Number
 Replacement Bellows	T161-013
 Replacement Knob (ball)	ARNB-B

Dimensions — ARN Series



Mounting Hole

ARNO
 ARNSO
 ARNLO

