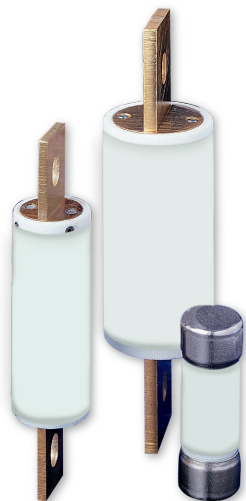


LDFJ SERIES - DRIVE FUSES

600 VAC/450 VDC • Fast-Acting • 1-600 A



Description

LDFJ series fuses provide space saving, high-speed performance and short-circuit protection for AC and DC drives.

LDFJ series offers current limiting features with lowest I²T for protection of power semiconductor devices and motor controllers.

Applications

- All AC/DC drives (Including variable frequency drives)
- Power converters and solid-state devices
- Resistive loads, such as resistance electric heat

Dimensions Inches (mm)

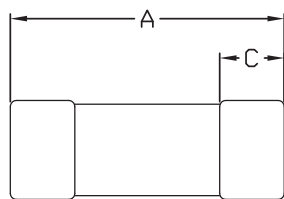


FIGURE 1

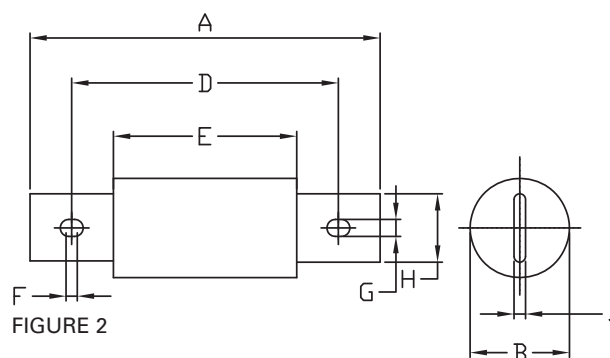
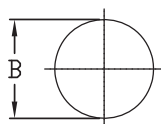


FIGURE 2

| AMPERES | REFER TO FIG. NO. | DIMENSIONS INCHES (mm) | | | | | | | | |
|-----------|-------------------|------------------------|-------------|-------------|--------------|-------------|-------------|-------------|-------------|------------|
| | | A | B | C | D | E | F | G | H | J |
| 1 – 30 | 1 | 2.25 (57.2) | 0.81 (20.6) | 0.50 (12.7) | - | - | - | - | - | - |
| 35 – 60 | 1 | 2.38 (60.5) | 1.06 (26.9) | 0.63 (16.0) | - | - | - | - | - | - |
| 70 – 100 | 2 | 4.63 (117.6) | 1.13 (28.7) | - | 3.63 (92.2) | 2.63 (66.8) | 0.43 (10.9) | 0.28 (7.1) | 0.75 (19.1) | 0.13 (3.3) |
| 110 – 200 | 2 | 5.75 (146.1) | 1.63 (41.4) | - | 4.38 (111.3) | 3.0 (76.2) | 0.43 (10.9) | 0.28 (7.1) | 1.13 (28.7) | 0.19 (4.8) |
| 225 – 400 | 2 | 7.13 (181.1) | 2.11 (53.6) | - | 5.25 (133.4) | 3.38 (85.9) | 0.58 (14.7) | 0.41 (10.4) | 1.63 (41.4) | 0.25 (6.4) |
| 450 – 600 | 2 | 8.0 (203.2) | 2.5 (63.5) | - | 6.0 (152.4) | 3.75 (95.3) | 0.74 (18.8) | 0.53 (13.5) | 2.0 (50.8) | 0.38 (9.7) |

Specifications

| | |
|-----------------------------|---|
| Voltage Ratings | 600 VAC / 450 VDC (30-600 A) |
| Interrupting Ratings | 200 kA AC / 100 kA DC |
| Ampere Range | 1–600 A |
| Approvals | Standard 248-8, Class J UL Listed CSA Certified |

Web Resources

TC curves, CAD drawings and other technical information contact Tech-Line at 800-TEC-FUSE or techline@littelfuse.com.

Recommended Fuse Holders

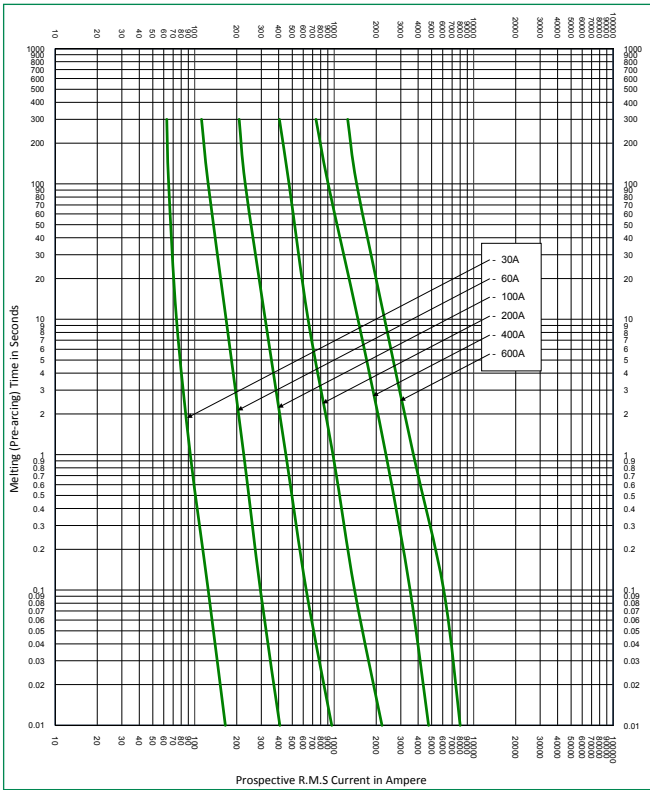
LFJ60 Series
LFPSJ Series (1-60 A)

Ordering Information

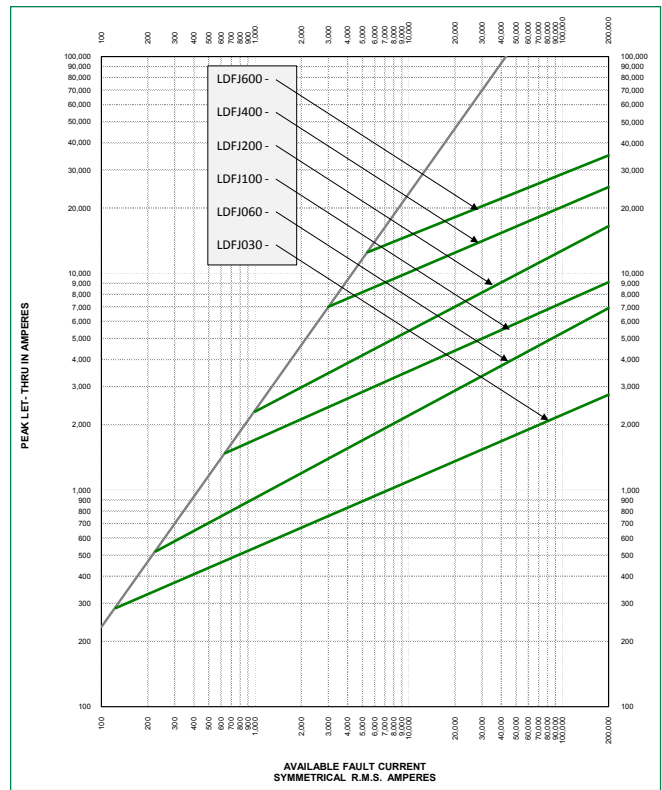
| AMPERE RATINGS | | | | | | |
|----------------|----|----|----|-----|-----|-----|
| 1 | 6 | 20 | 45 | 90 | 175 | 350 |
| 2 | 8 | 25 | 50 | 100 | 200 | 400 |
| 3 | 10 | 30 | 60 | 110 | 225 | 450 |
| 4 | 12 | 35 | 70 | 125 | 250 | 500 |
| 5 | 15 | 40 | 80 | 150 | 300 | 600 |

| AMPERE RANGE | SERIES | AMP CODE | CATALOG NUMBER | ORDERING NUMBER | PACK QTY |
|--------------|--------|----------|----------------|-----------------|------------|
| 1-60 | LDFJ | 060 | LDFJ060 | LDFJ060.T | 10 PCS/BOX |
| 70-200 | LDFJ | 110 | LDFJ110 | LDFJ110.V | 1 PC/BOX |
| 225-600 | LDFJ | 400 | LDFJ400 | LDFJ400.X | 1 PC/BOX |

LDFJTC curve



LDFJ Peak Let-Through Curve



Disclaimer Notice - Information furnished is believed to be accurate and reliable. However, users should independently evaluate the suitability of and test each product selected for their own applications. Littelfuse products are not designed for, and may not be used in, all applications. Read complete Disclaimer Notice at www.littelfuse.com/product-disclaimer.