

Relay Sockets

ES Series



Description

8 and 11 Pin Octal Sockets, DIN Rail Mountable, Finger Safe

Electrical Rating

- 300 Volts, 10 Amps

Construction

- Contacts** • Brass, Nickel Plated
- Screws** • M3 Steel, Nickel Plated, Maximum Wire Gauge #14

- Molding** • Break Resistant Thermoplastic

Agency Approvals

- UL recognized, File No. E113714
- CSA certified, File No. LR26716
- CE

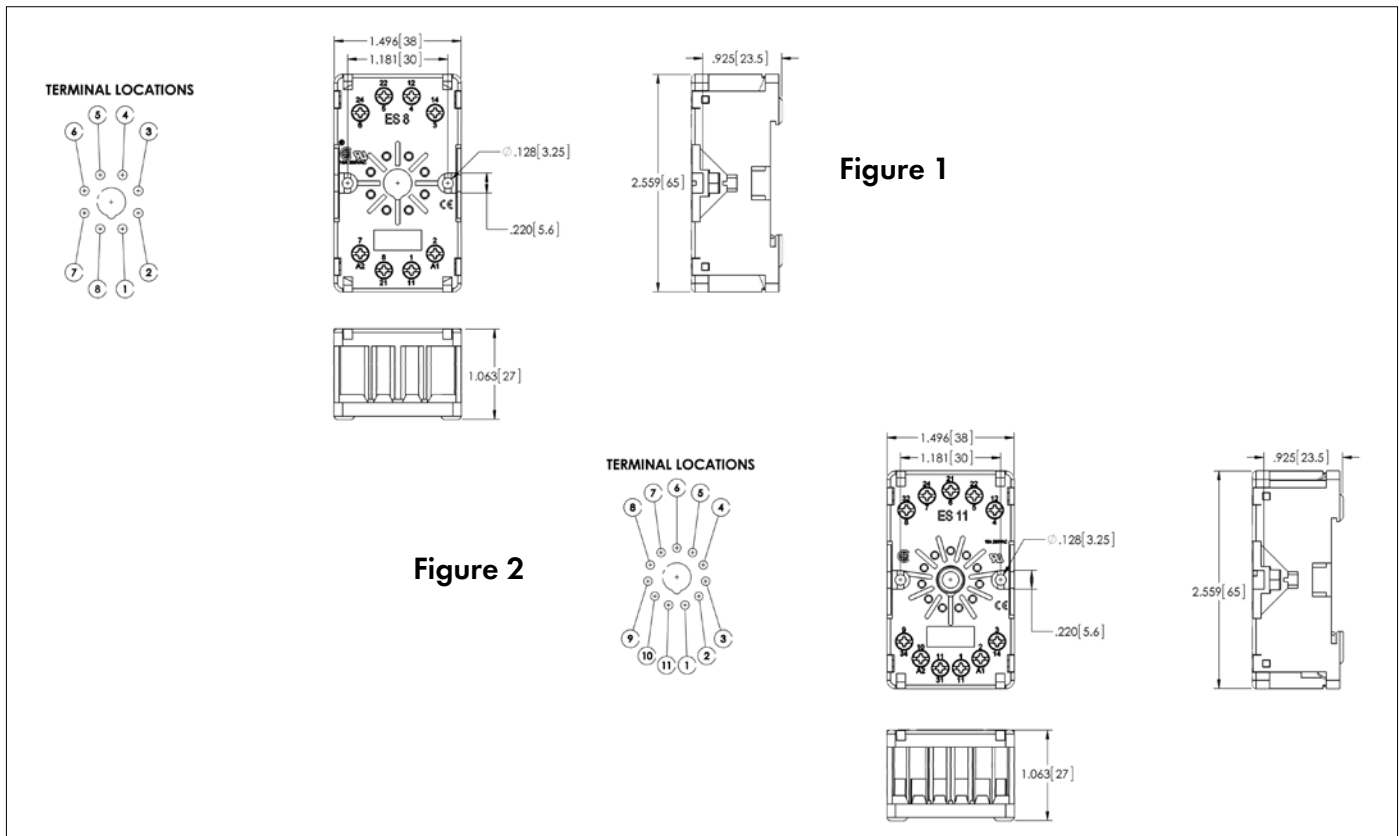


ES Series Ordering Code

| Part # | Description | Terminal Type |
|--------|----------------------------------|---------------|
| ES8 | DPDT, 8 Pin Octal Style (Fig. 1) | Box Lug |
| ES11 | 3PDT, 11 Pin Octal Style (Fig.2) | Box Lug |

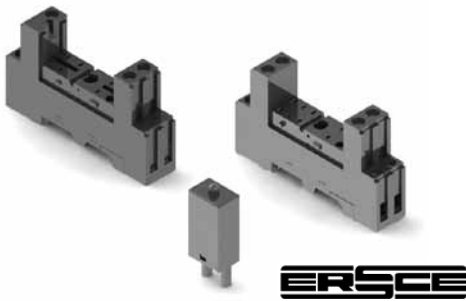
Accessories

| Part # | Description |
|----------------------------------------|-------------------------------------------------------|
| (Refer to the accessories pages 24-31) | |
| C-103-PM | Prepunched Aluminum DIN Rail (1 Meter Lengths) |
| C-108-PM | Prepunched Raised Aluminum DIN Rail (1 Meter Lengths) |
| C-108-2PM | Prepunched Raised Aluminum DIN Rail (2 Meter Lengths) |
| HDB-13 | Hold Down Spring |
| T | Marking Plate |



Relay Sockets

ES Series



ES Series Ordering Code

| Part # | Description | Terminal Type |
|--------|--------------------------------|---------------|
| ES35 | SPDT, 5 Pin Slim Line (Fig. 1) | Box Lug |
| ES50 | DPDT, 8 Pin Slim Line (Fig.2) | Box Lug |

Accessories

| Part # | Description |
|----------------------------------------|-------------------------------------------------------|
| (Refer to the accessories pages 24-31) | |
| C-103-PM | Prepunched Aluminum DIN Rail (1 Meter Lengths) |
| C-108-PM | Prepunched Raised Aluminum DIN Rail (1 Meter Lengths) |
| C-108-2PM | Prepunched Raised Aluminum DIN Rail (2 Meter Lengths) |
| MS12 | Hold Down Spring/Ejector |
| MS16 | Hold Down Spring/Ejector |
| MS25 | Hold Down Spring/Ejector |

Description

5 and 8 Pin Slim Line Sockets, DIN Rail Mountable, Finger Safe

Electrical Rating

• 300 Volts, 10 Amps 300 Volts, 12 Amps

Construction

Contacts • Brass, Nickel Plated
Screws • M3 Steel, Nickel Plated,
 Maximum Wire Gauge #14

Molding • Break Resistant Thermoplastic

Agency Approvals

• UL recognized, File No. E113714
 • CSA certified, File No. 172852
 • CE

Plug-in Indicator and Protection Modules

| Part # | Description |
|-----------|----------------------------------------------------------------|
| Type 22 | Diode for 6-230V DC (+Terminal A1) |
| Type 42V | Green LED with Diode for 6-24V DC (+Terminal A1) |
| Type 42CV | Green LED with Diode for 110-230V DC (+Terminal A1) |
| Type 52B | RC Circuit for 6-24V AC |
| Type 52C | RC Circuit for 110-240V AC |
| Type 62V | Green LED for 6-24V AC/DC (For DC + Terminal A1) |
| Type 92V | Green LED for 110-240V AC/DC (For DC + Terminal A1) |
| Type 62CV | Varistor + Green LED for 6-24V AC/DC (For DC + Terminal A1) |
| Type 92CV | Varistor + Green LED for 110-240V AC/DC (For DC + Terminal A1) |
| Type 102 | Bypass Resistor 110-240V AC |

TERMINAL LOCATIONS

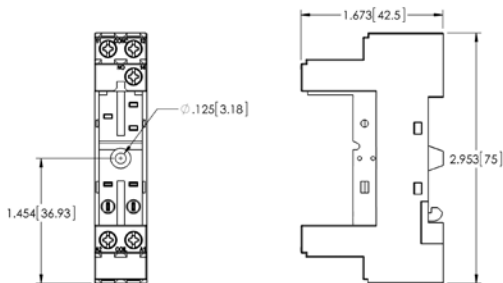


Figure 1

TERMINAL LOCATIONS

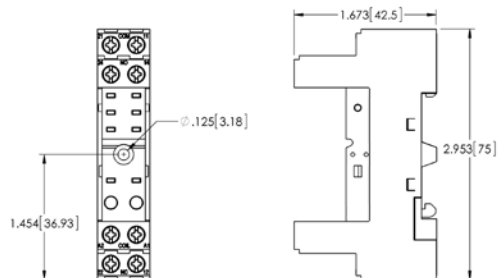




Figure 2

ES Series Relay Sockets

Description 8 Pin Slim Line Sockets, DIN Rail Mountable, Finger Safe




Electrical Rating

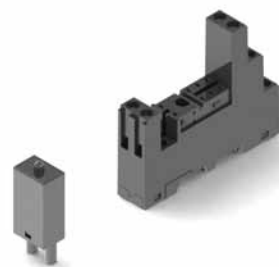
- 300 Volts, 10 Amps 
- 300 Volts, 12 Amps 

Construction

- Contacts** • Brass, Nickel Plated
- Screws** • M3 Steel, Nickel Plated, Maximum Wire Gauge #14
- Molding** • Break Resistant Thermoplastic

Agency Approvals

- UL recognized, File No. E113714 
- CSA certified, File No. LR42742 
- CE 



ES Series Ordering Code

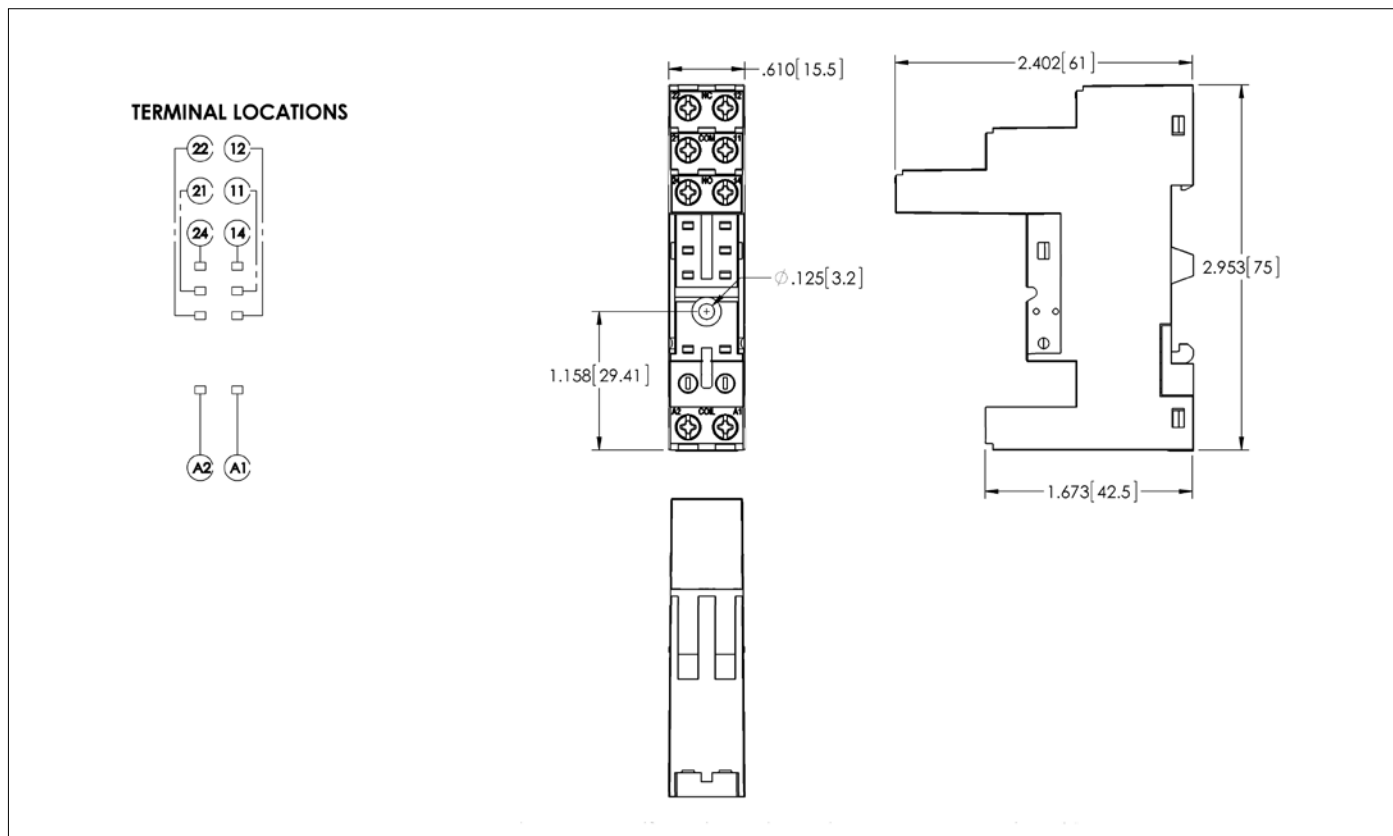
| Part # | Description | Terminal Type |
|--------|-----------------------|---------------|
| ES50/3 | DPDT, 8 Pin Slim Line | Box Lug |

Accessories

| Part # | Description |
|----------------------------------------|-------------------------------------------------------|
| (Refer to the accessories pages 24-31) | |
| C-103-PM | Prepunched Aluminum DIN Rail (1 Meter Lengths) |
| C-108-PM | Prepunched Raised Aluminum DIN Rail (1 Meter Lengths) |
| C-108-2PM | Prepunched Raised Aluminum DIN Rail (2 Meter Lengths) |
| MS12 | Hold Down Spring/Ejector |
| MS16 | Hold Down Spring/Ejector |
| MS25 | Hold Down Spring/Ejector |

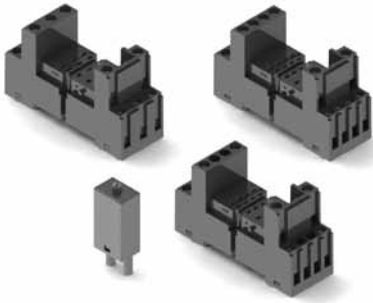
Plug-in Indicator and Protection Modules

| Part # | Description |
|-----------|----------------------------------------------------------------|
| Type 22 | Diode for 6-230V DC (+Terminal A1) |
| Type 42V | Green LED with Diode for 6-24V DC (+Terminal A1) |
| Type 42CV | Green LED with Diode for 110-230V DC (+Terminal A1) |
| Type 52B | RC Circuit for 6-24V AC |
| Type 52C | RC Circuit for 110-240V AC |
| Type 62V | Green LED for 6-24V AC/DC (For DC + Terminal A1) |
| Type 92V | Green LED for 110-240V AC/DC (For DC + Terminal A1) |
| Type 62CV | Varistor + Green LED for 6-24V AC/DC (For DC + Terminal A1) |
| Type 92CV | Varistor + Green LED for 110-240V AC/DC (For DC + Terminal A1) |
| Type 102 | Bypass Resistor 110-240V AC |



Relay Sockets

ES Series



Description

8, 11 and 14 Pin Miniature Sockets, DIN Rail Mountable, Finger Safe

Electrical Rating

• 300 Volts, 10 Amps 300 Volts, 12 Amps

Construction

Contacts • Brass, Nickel Plated
Screws • M3 Steel, Nickel Plated,
 Maximum Wire Gauge #14

Molding • Break Resistant Thermoplastic

Agency Approvals • UL recognized, File No. E113714

• CSA certified, File No. LR26716

• CE

ES Series Ordering Code

| Part # | Description | Terminal Type |
|---------|---------------------------------|---------------|
| ES15/2N | DPDT, 8 Pin Miniature (Fig. 2) | Box Lug |
| ES15/3N | 3PDT, 11 Pin Miniature (Fig.1) | Box Lug |
| ES15/4N | 4PDT, 14 Pin Miniature (Fig. 2) | Box Lug |

Accessories

| Part # | Description |
|----------------------------------------|-------------------------------------------------------|
| (Refer to the accessories pages 24-31) | |
| C-103-PM | Prepunched Aluminum DIN Rail (1 Meter Lengths) |
| C-108-PM | Prepunched Raised Aluminum DIN Rail (1 Meter Lengths) |
| C-108-2PM | Prepunched Raised Aluminum DIN Rail (2 Meter Lengths) |
| MHO | Hold Down Spring |
| MS35 | Hold Down Spring/Ejector |

Plug-in Indicator and Protection Modules

| Part # | Description |
|-----------|----------------------------------------------------------------|
| Type 22 | Diode for 6-230V DC (+Terminal A1) |
| Type 42V | Green LED with Diode for 6-24V DC (+Terminal A1) |
| Type 42CV | Green LED with Diode for 110-230V DC (+Terminal A1) |
| Type 52B | RC Circuit for 6-24V AC |
| Type 52C | RC Circuit for 110-240V AC |
| Type 62V | Green LED for 6-24V AC/DC (For DC + Terminal A1) |
| Type 92V | Green LED for 110-240V AC/DC (For DC + Terminal A1) |
| Type 62CV | Varistor + Green LED for 6-24V AC/DC (For DC + Terminal A1) |
| Type 92CV | Varistor + Green LED for 110-240V AC/DC (For DC + Terminal A1) |
| Type 102 | Bypass Resistor 110-240V AC |

TERMINAL LOCATIONS

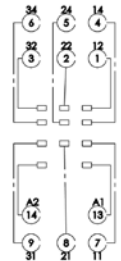
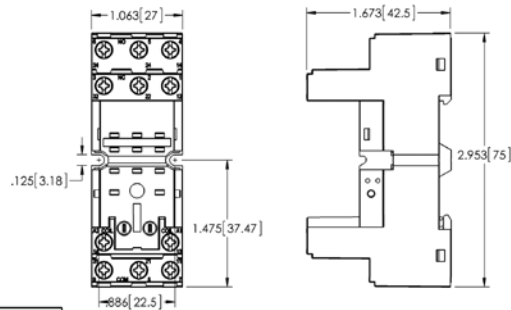
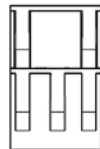


Figure 1



TERMINAL LOCATIONS

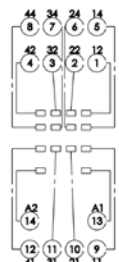
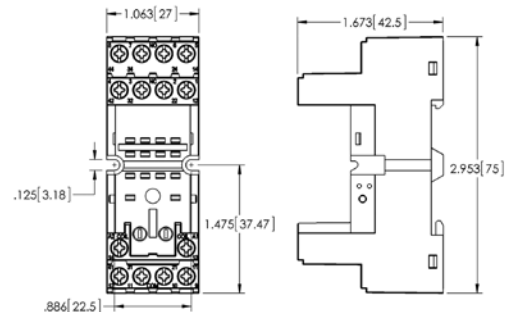


Figure 2



ES15/2N Series Note:

ES15/2N is the same as ES15/4N but with terminals 2, 3, 6, 7, 10 & 11 omitted

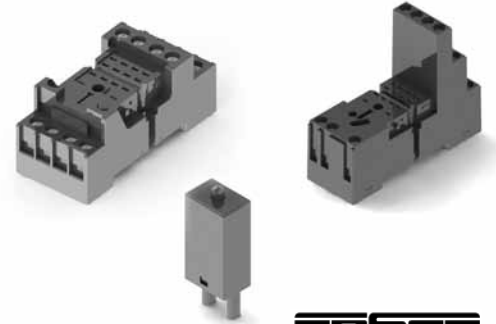
ES Series Relay Sockets

Description 14 Pin Miniature Sockets, DIN Rail Mountable, Finger Safe

Electrical Rating • 300 Volts, 10 Amps

Construction
Contacts • Brass, Nickel Plated
Screws • M3 Steel, Nickel Plated
Molding • Break Resistant Thermoplastic

Agency Approvals • UL recognized, File No. E113714
 • CSA certified, File No. LR26716
 • CE
 • ROHS



ES Series Ordering Code

| Part # | Description | Terminal Type |
|---------|---------------------------------|-----------------------|
| ES15/4B | 4PDT, 14 Miniature (Fig. 1) | Pressure Clamp Screws |
| ES15/4S | 4PDT, 14 Pin Miniature (Fig. 2) | Box Lug |

Accessories

| Part # | Description |
|-----------|-------------------------------------------------------|
| | (Refer to the accessories pages 24-31) |
| C-103-PM | Prepunched Aluminum DIN Rail (1 Meter Lengths) |
| C-108-PM | Prepunched Raised Aluminum DIN Rail (1 Meter Lengths) |
| C-108-2PM | Prepunched Raised Aluminum DIN Rail (2 Meter Lengths) |
| MHO | Hold Down Spring |
| MS35 | Hold Down Spring |

Plug-in Indicator and Protection Modules

| Part # | Description |
|-----------|----------------------------------------------------------------|
| Type 22 | Diode for 6-230V DC (+Terminal A1) |
| Type 42V | Green LED with Diode for 6-24V DC (+Terminal A1) |
| Type 42CV | Green LED with Diode for 110-230V DC (+Terminal A1) |
| Type 52B | RC Circuit for 6-24V AC |
| Type 52C | RC Circuit for 110-240V AC |
| Type 62V | Green LED for 6-24V AC/DC (For DC + Terminal A1) |
| Type 92V | Green LED for 110-240V AC/DC (For DC + Terminal A1) |
| Type 62CV | Varistor + Green LED for 6-24V AC/DC (For DC + Terminal A1) |
| Type 92CV | Varistor + Green LED for 110-240V AC/DC (For DC + Terminal A1) |
| Type 102 | Bypass Resistor 110-240V AC |

