

- Status Indicating LED on X4 Series
- UL, CSA, and CE

Solid state I/O switching modules deliver an electrically clean, photo-isolated, noise-free "output" interface from logic level control systems to external loads such as motors, valves, solenoids, etc. -- or an "input" interface from the load or sensors to microprocessor or computer-based logic level systems. Designed for long, reliable service in demanding industrial environments.

INPUT SPECIFICATIONS	IDC5 (S)MIDC5 X4IDC5	IDC15 (S)MIDC15 X4IDC15	IDC24 (S)MIDC24 X4IDC24	IDC5D (S)MIDC5D X4IDC5D	IDC15D (S)MIDC15D X4IDC15D	IDC24D (S)MIDC24D X4IDC24D
Nominal Input Voltage [Vdc]	24	24	24	24	24	24
Min. Input Voltage [Vdc]	10	10	10	3.3	3.3	3.3
Max. Input Voltage [Vdc]	36	36	36	32	32	32
Nominal Input Resistance [ohm]	-	-	-	1K	1K	1K
Max. Input Current [mAdc]	16	16	16	32	32	32
Drop Out Current [mAdc]	1.0	1.0	1.0	1.0	1.0	1.0
Allowable Off-State Current [mAdc]	1.0	1.0	1.0	1.0	1.0	1.0
Allowable Off-State Voltage [Vdc]	2.0	2.0	2.0	2.0	2.0	2.0

OUTPUT SPECIFICATIONS

Nominal Logic Voltage [Vdc]	5	15	24	5	15	24
Min. Logic Voltage [Vdc] (X4 Series)	1.5 (3)	8.5 (10)	16.5 (18)	1.5 (3)	8.5 (10)	16.5 (18)
Max. Logic Voltage [Vdc] (X4 Series)	6.0 (7)	18.5 (20)	30.5 (32)	5.5 (7)	18.5 (20)	30.5 (32)
Typical Logic Supply Current [mAdc]	10	10	10	10	10	10
Max. Logic Supply Current [mAdc]	18	16	14	18	16	14
Max. Logic Supply Leakage Current [μAdc]	10	10	10	10	10	10
Max. Output Voltage [Vdc]	30	30	30	30	30	30
Max. Output Current [mAdc]	50	50	50	50	50	50
Max. Output Leakage Current [μAdc]	10	10	10	10	10	10
Max. Output Voltage Drop [mVdc]	200	200	200	200	200	200
Max. Turn-On Time [μsec] ①	1000	1000	1000	300	300	300
Max. Turn-Off Time [μsec] ①	1000	1000	1000	600	600	600

GENERAL NOTES

① At nominal voltage and room temperature.

© 2003 CRYDOM CORP Specifications subject to change without notice.

For recommended applications and more information contact:

USA: Sales Support (877) 502-5500 Tech Support (877) 702-7700 FAX (619) 710-8540

Crydom Corp, 2320 Paseo de las Americas, Ste. 201, San Diego, CA 92154

Email: sales@crydom.com WEB SITE: <http://www.crydom.com>

UK: +44 (0)1202 365070 • FAX +44 (0)1202 365090 Crydom International Ltd., 7 Cobham

Road, Ferndown Industrial Estate, Ferndown, Dorset BH21 7PE, Email: intsales@crydom.com.

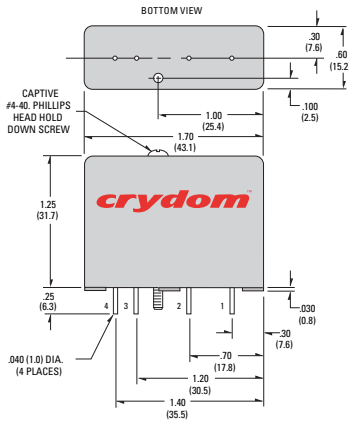
GERMANY: +49 (0)180 3000 506

GENERAL SPECIFICATIONS

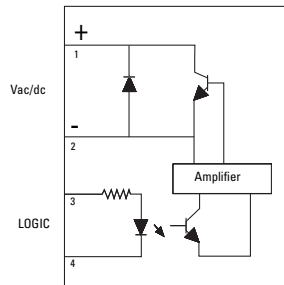
Operating temperature range	-30 to +80°C
Storage temperature range	-40 to +100°C
Isolation	4,000 Vrms
Capacitance input to output	8 pF
Package Color	Red

WIRING & MECHANICAL DIAGRAMS

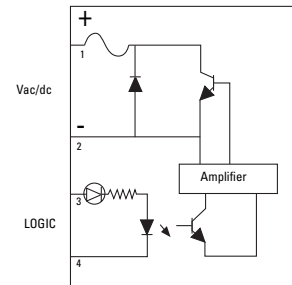
Standard Series, ODC



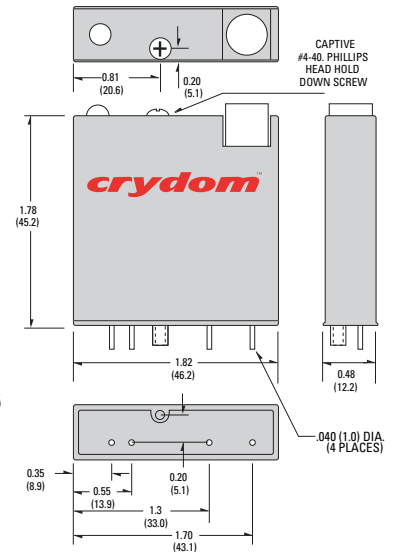
Standard and Mini Pack



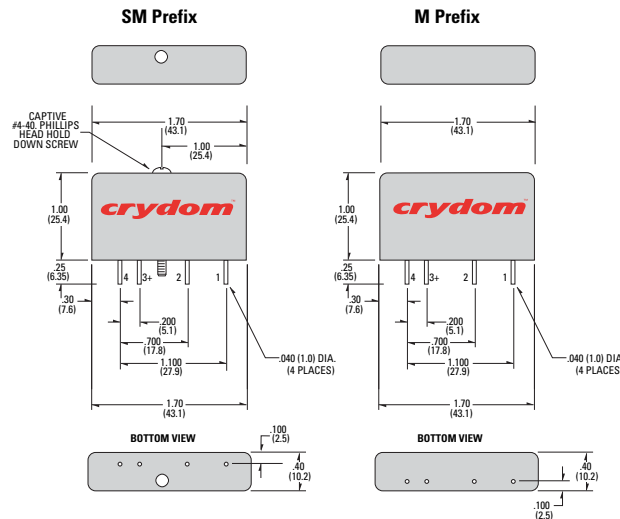
X4 Series



X4 Series, X4ODC



MINI-PACK Series, (S)MODC



APPLICATION NOTES

- Do not install or remove modules in live (electrically hot) circuits. High voltage may be present.
- An externally located commutating diode must be installed across inductive loads
- I/O module boards also available

All dimensions are in inches (millimeters)

© 2003 CRYDOM CORP Specifications subject to change without notice.