

FEATURES:

- Switching capacity up to 30A
- Small size and light weight
- Insert mounting footprint
- Suitable for automobile and lamp applications
- Metal mounting tab



32.6 x 25.2 x 21.0mm

CONTACT DATA

Contact Arrangement	1A = SPST N.O.
Contact Rating	15A, 20A, 25A, 30A @ 14VDC
Contact Resistance	< 50 milliohms initial
Contact Material	AgSnO ₂
Maximum Switching Power	420W
Maximum Switching Voltage	75VDC
Maximum Switching Current	30A

COIL DATA

Coil Voltage VDC		Coil Resistance $\Omega \pm 10\%$	Pick Up Voltage VDC (max)	Release Voltage VDC (min)	Coil Power W	Operate Time ms	Release Time ms	
Rated	Max.	1.8W	75% of rated voltage	10% of rated voltage	1.8	7	5	
6	7.8		20	3.9				1.2
12	15.6		80	7.8				2.4
24	31.2		320	15.6				4.8

CAUTION:

1. The use of any coil voltage less than the rated coil voltage may compromise the operation of the relay.
2. Pickup and release voltages are for test purposes only and are not to be used as design criteria.

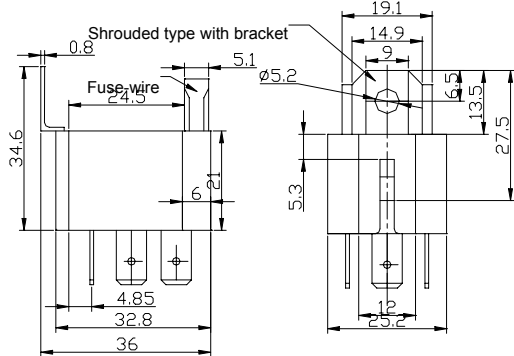
GENERAL DATA

Electrical Life @ rated load	100K cycles, typical
Mechanical Life	10M cycles, typical
Insulation Resistance	100M Ω min @ 500VDC
Dielectric Strength, Coil to Contact	750V rms min. @ sea level
Contact to Contact	500V rms min. @ sea level
Shock Resistance	100m/s ² for 11ms
Vibration Resistance	1.27mm double amplitude 10-40Hz
Terminal (Copper Alloy) Strength	8N
Operating Temperature	-40 °C to + 85 °C
Storage Temperature	-40 °C to + 155 °C
Solderability	230 °C \pm 2 °C for 10 \pm 0.5s
Weight	32g

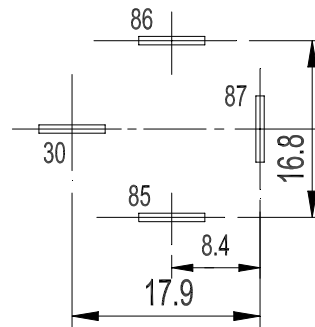
ORDERING INFORMATION

1. Series: CTA9	CTA9	1A	S	20	12
2. Contact Arrangement: 1A = SPST N.O.					
3. Sealing Options: S = Sealed					
4. Contact Ratings: 15 = 15A 20 = 20A 25 = 25A 30 = 30A					
6. Coil Voltage: 6VDC 12VDC 24VDC					

DIMENSIONS: (Units = mm)



PCB Layout



Schematic

