

## Series A3000, LP3000 & CB3000

### Single Row Terminal Blocks

#### SPECIFICATIONS

**Rating:** A3: 30A, 600V\*  
 LP3: 30A, 150V  
 CB3: 30A, 600V

**Center Spacing:** .437" or 7/16" (11.10 mm)

**Wire Size:** #12-22 AWG CU

**Screw Size:** #6-32 zinc plated philslot screws.

**Torque Rating:** 9 in.-lb. max.

**Base:** Standoffs standard for easy flux washing.

**Distance Between Barriers:** .32" (8.1 mm)

**Recommended PCB Hole Diameter:** .076" (1.93 mm);  
 .062" (1.59 mm) on .045" terminals

**Operating Temperature:** 105°F (221°F) max., -40°C (-40°F) min.

**Molded Material:** Black, UL Rated 94VO Thermoplastic

**Breakdown Voltage:** 3500V rms (A3 & LP3); 8200V rms (CB3)

**Approvals:** UL E62622; CSA LR15364; IEC Compliance, CE Certified

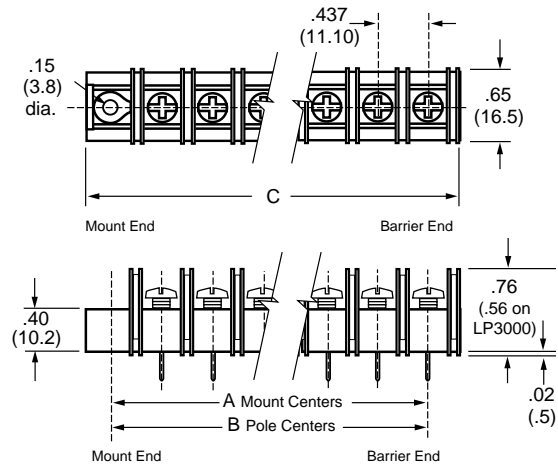
\*30A Rating achieved with a #10 copper wire crimped to a ring terminal;  
 20 Rating without ring terminal.

A31940707WR

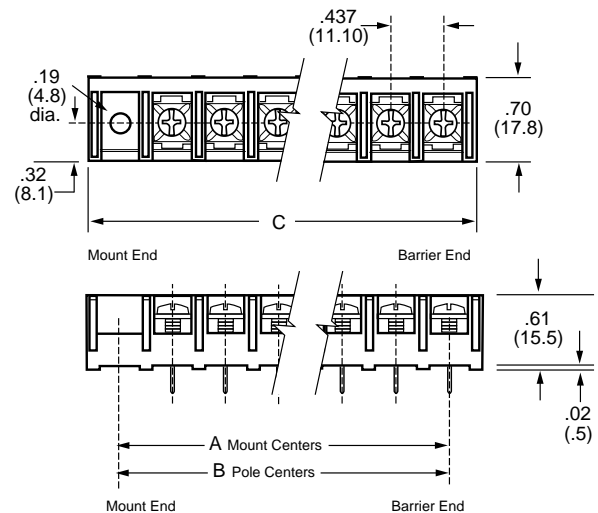
LP30110507

CB31420807

#### A3000 & LP3000 Series



#### CB3000 Series



Poles	MOUNTING ENDS ONLY		BARRIER & MOUNTING ENDS B Pole Ctrs.	BARRIER ENDS ONLY C Length
	A Mount Ctrs.	C Length		
02	1.31	1.73	.43	.98
03	1.75	2.17	.87	1.43
04	2.18	2.61	1.31	1.87
05	2.62	3.05	1.75	2.31
06	3.06	3.48	2.18	2.75
07	3.50	3.92	2.62	3.18
08	3.93	4.36	3.06	3.62
09	4.37	4.80	3.50	4.06
10	4.81	5.23	3.93	4.50
11	5.25	5.67	4.37	4.93
12	5.68	6.11	4.81	5.37
13	6.12	6.55	5.25	5.81
14	6.56	6.98	5.68	6.25
15	7.00	7.42	6.12	6.68
16	7.43	7.86	6.56	7.12
17	7.87	8.30	7.00	7.56
18	8.31	8.73	7.43	8.00
19	8.75	9.17	7.87	8.43
20	9.18	9.60	8.31	8.87
21	9.62	10.05	8.50	9.31
22	10.06	10.48	9.18	9.75
23	10.50	10.92	9.62	10.18
24	10.93	11.36	10.06	10.62
25	11.37	11.80	10.50	11.06
26	11.81	12.23	10.93	11.50
27			11.37	11.93
28			11.81	12.37

Dimensions in inches. To convert to millimeters, multiply by 25.4.

# MAGNUM<sup>®</sup>

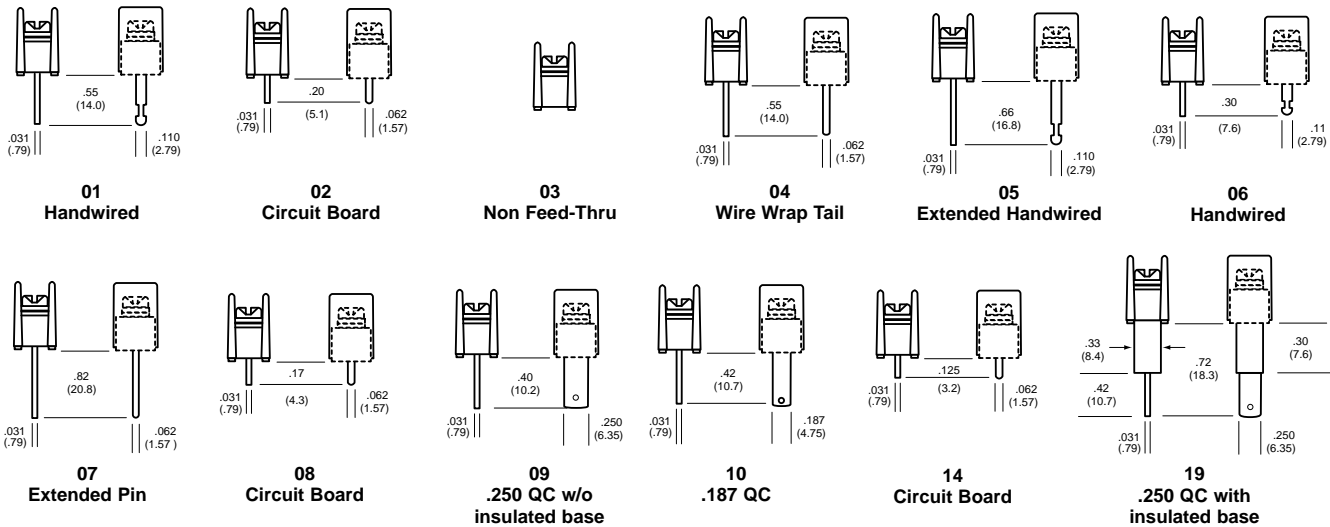
## Series A3000 & LP3000 Single Row Terminal Blocks

### Part Numbering System

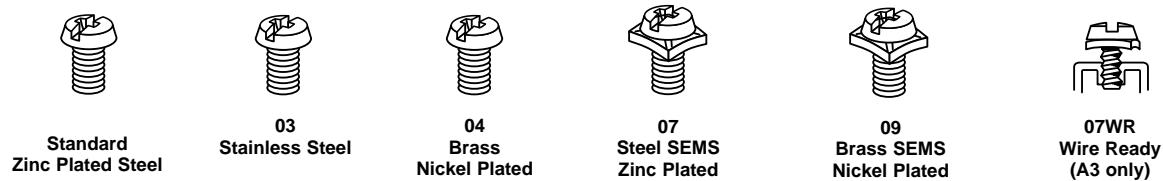
Series	Terminal Style	Base/End (Views pg. 15)	Poles	Screw Options	Options
<b>A A</b> <b>h h P P a</b>	<b>n n</b>	<b>n</b>	<b>n n</b>	<b>n n n n</b>	<b>n n n</b>
<b>A3</b> - standard barrier <b>LP3</b> - low profile barrier	<b>01</b> - handwired <b>02</b> - printed circuit <b>03</b> - non feed-thru <b>04</b> - wire wrap tail <b>06</b> - handwired <b>07</b> - extended pin <b>08</b> - printed circuit <b>09</b> - .250 QC w/o insulated base <b>10</b> - .187 QC <b>14</b> - printed circuit <b>19</b> - .250 QC with insulated base	<b>1</b> - flat base/mnt. end <b>2</b> - flat base/barrier end <b>3</b> - insulator base/mnt. end <b>4</b> - insulator base/barrier end <b>5</b> - closed base/mount end	<b>02 to 28</b> <b>02 to 26</b> on mount end base	<b>Blank</b> - std. screw <b>00</b> - screws shipped bulk <b>03</b> - stainless steel <b>04</b> - brass nickel plated <b>07</b> - steel SEMS zinc plated (not available with hardware options) <b>09</b> - brass SEMS nickel plated (not available with hardware options) <b>03CA</b> - stainless steel captive <b>04CA</b> - brass captive <b>07CA</b> - SEMS captive <b>09CA</b> - brass SEMS captive <b>07WR</b> - steel SEMS wire ready (N/A on LP3)	<b>AB</b> - angle mnt. options (pg 16) <b>A1 to A9</b> - .250" QC <b>B1 to B9</b> - .187" QC <b>DR</b> - drilled right angle (pg 16) <b>J201</b> - flat slip-on jumper <b>L1 to L6</b> marking options (pg 23) <b>MP, MP8 &amp; MT</b> mounting plates (pg 16) <b>OJ3 &amp; OJ4</b> - over barrier jumpers <b>RC</b> - retaining clips (pg 16) <b>R30 to R77</b> - right angle bends (pg 16) <b>SO</b> - stand off insulators (pg 16) <b>S1</b> - solder lug/flat
<p>Base/End Note: 3, 4 styles not available with 02, 03, 06, 08, 09 &amp; 14 terminals. 5 Style only available with 03 terminals.</p>					

### Terminal Styles

Inches (Millimeters)



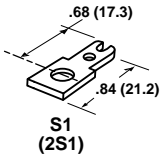
### Screw Options



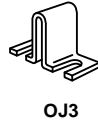
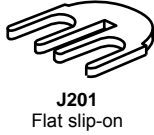
**Hardware Options** (Bulk ordering part numbers are in parentheses.)

Inches (Millimeters)

**Solder Lugs**

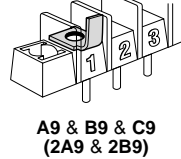
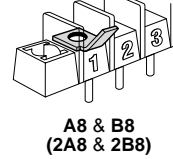
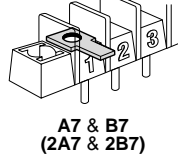
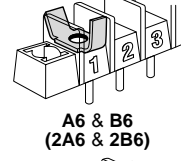
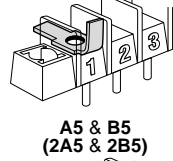
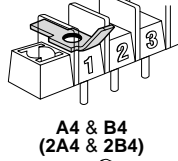
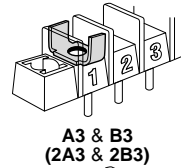
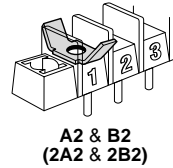
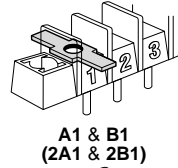


**Jumpers**

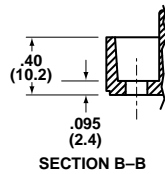
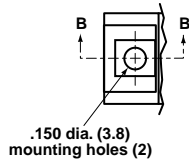


**Quick Connects**

Blade Width A = .250" Blade Width B = .187"



**Base/End Options**



1, 3 & 5 Mount Ends

# MAGNUM®

## Series A3000 & LP3000

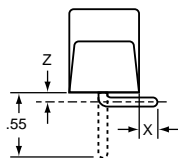
### Single Row Terminal Blocks *Continued*

### Mounting Options

#### Right Angle Bends (A3, LP3 only)

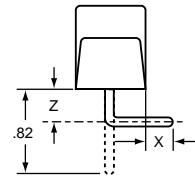
Right angle terminals are offered on the A3000 & LP3000 Series. Configurations are defined in these dimensions: X = pin extension beyond the block base; Z = length from block base to centerline of the terminal tip. Standard bends consist of the X and Z dimensions shown in the chart. Specify by adding the selected Bend Option Code to the terminal part no.

#### 04 Terminal Bend Configurations



Bend Option Code	X (minimum)	Z	Available w/insulator base
R30	-.04	.28	No
R35	.01	.23	No
R36	.02	.22	No
R39	.05	.19	No
R42	.08	.16	No
R46	.12	.12	No
R48	.14	.10	No
R50	.16	.08	No

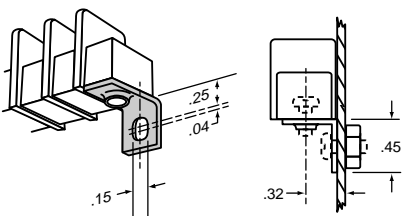
#### 07 Terminal Bend Configurations



Bend Option Code	X (minimum)	Z	Available w/insulator base
R30	-.04	.55	Yes
R35	.01	.50	Yes
R36	.02	.49	Yes
R50	.16	.35	No
R53	.19	.32	No
R66	.32	.19	No
R69	.35	.16	No
R75	.41	.10	No
R77	.43	.08	No

Dimensions in inches. To convert to millimeters, multiply by 25.4.

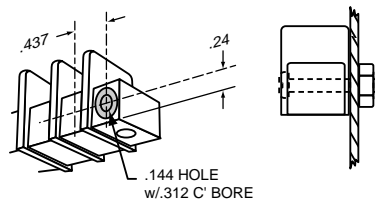
#### Angle Brackets (A3, LP3 only)



#### Option AB

Angle brackets enable block to be fastened at right angles to normal mount position. Bulk part no. **2AB**.

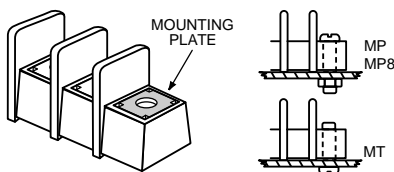
#### Drilled Right Angle (A3, LP3 only)



#### Option DR

Counterbored holes across mount ends of block enable fastening with two screws at right angles to normal mount position.

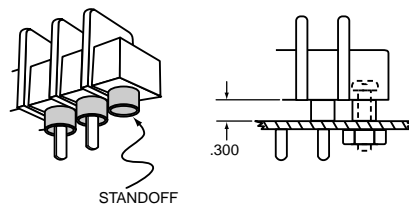
#### Mounting Plates



#### Options MP, MP8 & MT

**MP** Metal inserts with .150" dia. hole accept #6 screw. **MP8** Metal inserts with .187" dia. hole accept #8-32 screw. **MT** Metal inserts with tapped hole accept #6-32 screw.

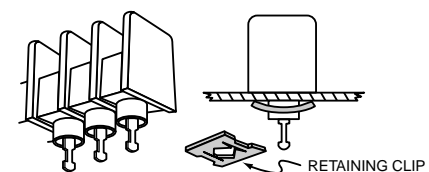
#### Standoffs



#### Option SO

Standoff mounts are tubes molded to the mounting positions. Available with insulator bases only.

#### Retaining Clip



#### Option RC

Use on standoff tubes. Fit panels up to .125" thick. Two clips for every five positions. Supplied unassembled. Bulk Part No. **H541**.